

HIGH FIVE[®]



**BASEBALL
SOFTBALL**

2016

STYLE INDEX

NEW STYLES

BANDIT PRINT INSET JERSEY - PAGES 4-5
 PRINTED EVOLUTION LS JERSEY - PAGES 22-23
 PRINTED EVOLUTION SS JERSEY - PAGES 16-17
 WOMEN'S PRINTED EVOLUTION SS JERSEY - PAGES 32-33
 THE HOLLOWAY QUALIFIER HEADBAND - PAGE 48
 THE HOLLOWAY DAGGER SLEEVE - PAGE 48

2016 HIGH 5 COLLECTION

PAGES 26-27

BASEBALL JERSEYS

PAGES 4-23

BASEBALL PANTS

PAGES 24-25

SOFTBALL JERSEYS

PAGES 28-43

SOFTBALL PANTS

PAGES 44-45

OUTERWEAR & CAPS

PAGES 46-48

SOCKS

PAGE 49

BAGS

PAGES 50-51

SIZE CHARTS

PAGE 49

12220	ACE FULL-BUTTON JERSEY	14-15
12120	ACE TWO-BUTTON JERSEY	6-7
15122	ARC SOFTBALL PANT	44
28030	ATHLETIC SOCK	49
27850	BACKPACK	50
12210	BANDIT TWO-BUTTON JERSEY	4-5
12230	BANDIT PRINT INSET TWO-BUTTON JERSEY	4-5
19820	BASEBALL BELT	48
15040	CLASSIC DOUBLE-KNIT BB PANT	24
19700	COTTON TWILL SIX-PANEL CAP	48
19420	DOUBLE-KNIT PULL-UP BB PANT	25
27760	DRAWSTRING BACKPACK	51
12162	DYNAMITE JERSEY	38-39
27880	ELITE TRAINING BAG	50
12050	ELLIPSE TWO-BUTTON JERSEY	12
32160	ESSORTX SLEEVELESS T-SHIRT	21
12060	ESSORTX TWO-BUTTON JERSEY	20
72300	EVOLUTION SHORT SLEEVE	16-17
72310	EVOLUTION LONG SLEEVE	22-23
12142	FAUX FRONT JERSEY	30-31
12152	FEVER JERSEY	43
15142	FEVER SHORT	43
12022	FLEX JERSEY	41
15022	FLEX SHORT	41
12172	GALAXY JERSEY	28-29
19810	GAME SOCK	49
27870	GEAR BAG	51
12130	GRAVITY TWO-BUTTON JERSEY	10-11
22870	HAWK JERSEY	19
29100	HOLLOWAY DAGGER SLEEVE	48
71060	HOLLOWAY DETERMINATION JACKET	47
71560	HOLLOWAY DETERMINATION PANT	47
79222	HOLLOWAY QUALIFIER HEADBAND	48
71052	HOLLOWAY TUMBLE JACKET	46
71552	HOLLOWAY TUMBLE PANT	46
12080	IMPACT FULL-BUTTON JERSEY	13
12070	IMPACT TWO-BUTTON JERSEY	13
22820	KINETIC JERSEY	18
22780	LIBERTY JERSEY	21
12182	LIGHTNING V-NECK JERSEY	36-37
15050	PIPED CLASSIC DOUBLE-KNIT BB PANT	24
15080	PIPED DOUBLE-KNIT BB PANT	25
15102	PIPED PROSTYLE LOW-RISE SB PANT	45
72330	PRINTED EVOLUTION SHORT SLEEVE	16-17
72340	PRINTED EVOLUTION LONG SLEEVE	22-23
15052	PROSTYLE LOW-RISE SB PANT	45
15152	SPIRAL FULL-LENGTH SB PANT	44
12102	SPIRIT TWO-BUTTON JERSEY	42
19760	SPORT TWILL VISOR	48
27720	STADIUM EQUIPMENT BAG	51
19800	STIRRUP SOCK	49
22710	TEMPEST JERSEY	20
27790	TRAINING BAG	51
15132	UNBELTED SOFTBALL PANT	45
12032	WAVE JERSEY	41
12200	WILDCARD TWO-BUTTON JERSEY	8-9
22872	WOMEN'S HAWK JERSEY	34-35
72332	WOMEN'S PRINTED EVOLUTION SS	32-33
72322	WOMEN'S EVOLUTION SS	32-33

ALL JERSEY/SHORT AND JACKET/PANT
 COMBINATIONS ARE **SOLD SEPARATELY**

ALL PRICES ARE MSRP AND SUBJECT
 TO CHANGE WITHOUT NOTICE

HIGH FIVE®



ACE FULL-BUTTON JERSEY
 PAGE 15

GALAXY FULL-BUTTON JERSEY
 PAGE 29

YOUR BASEBALL & SOFTBALL UNIFORM SOLUTION

CONTACT OUR CUSTOMER SERVICE CALL CENTER FOR DETAILS ON OUR FULL RANGE OF BASEBALL/SOFTBALL UNIFORMS & ACCESSORIES TO COVER ALL YOUR NEEDS

OPEN FROM 9:00AM TO 7:00PM EST • 800-222-4016

SEE THE 2016 *HIGH FIVE COLLECTION* PAGES 26-27



DYNAMITE JERSEY
PAGE 39

WOMEN'S PRINTED EVOLUTION
PAGE 33

PRINTED EVOLUTION SHORT SLEEVE
PAGE 17

BANDIT PRINT INSET TWO-BUTTON JERSEY
PAGE 5



SHOWN WITH THE 15040 CLASSIC
DOUBLE-KNIT BASEBALL PANT
SEE PAGE 24 FOR MORE INFORMATION

THE *BANDIT PRINT INSET* JERSEY FOR 2016
A CONTEMPORARY FRAGMENT PRINT INSET
MODERN UPDATE TO ONE OF OUR MOST POPULAR STYLES

DECORATION & VOLUME PRICING

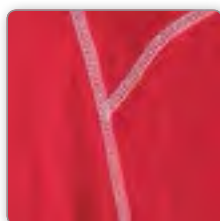
FOR MORE INFORMATION, PLEASE CONTACT OUR
CUSTOMER CALL CENTER AT 800-222-4016 (9:00AM - 7:00PM EST)
OR EMAIL CUSTOMERCARE@HIGH5SPORTSWEAR.COM



THE BANDIT TWO-BUTTON JERSEY



FRAGMENT PRINT DETAIL



CONTRAST COVER STITCH DETAIL

SHOWN WITH THE 15040 CLASSIC
DOUBLE-KNIT BASEBALL PANT
SEE PAGE 24 FOR MORE INFORMATION

**BANDIT PRINT INSET TWO-BUTTON JERSEY AVAILABLE 12/1/15****12230** Adult AS, AM, AL, AXL \$26.00 AZXL \$30.00 A3XL \$33.00**12231** Youth YS, YM, YL \$24.00**TWO-BUTTON:** Two-button placket for easy decoration

• Main fabric in 100% polyester with moisture wicking properties • Fragment Print inserts are 100% polyester micro pique

SCARLET/FRAGMENT PRINT/WHITE



BLACK/FRAGMENT PRINT/WHITE



NAVY/FRAGMENT PRINT/WHITE



WHITE/FRAGMENT PRINT/WHITE



ROYAL/FRAGMENT PRINT/WHITE



GRAPHITE/FRAGMENT PRINT/WHITE

**BANDIT TWO-BUTTON JERSEY****12210** Adult AS, AM, AL, AXL \$25.00 AZXL \$29.00 A3XL \$32.00**12211** Youth YS, YM, YL \$23.00**TWO-BUTTON:** Two-button placket for easy decoration

• Main fabric in 100% polyester with moisture wicking properties • Side panels in 92% polyester / 8% spandex for comfort and breathability

WHITE/BLACK/WHITE



BLACK/SILVER GREY/WHITE



SCARLET/BLACK/WHITE



NAVY/SILVER GREY/WHITE



ROYAL/SILVER GREY/WHITE



PURPLE/BLACK/WHITE



FOREST/SILVER GREY/WHITE



MAROON/BLACK/WHITE



SILVER GREY/BLACK/WHITE



ORANGE/SILVER GREY/WHITE



COLUMBIA BLUE/SILVER GREY/WHITE



BLACK/SCARLET/WHITE





SHOWN WITH THE 15080 PIPED DOUBLE-KNIT BASEBALL PANT
SEE PAGE 25 FOR MORE INFORMATION

SEE PAGE 14 FOR MORE INFO ON
THE ACE FULL-BUTTON JERSEY
A MODERN CLASSIC WITH ALL-STAR POWER

DECORATION & VOLUME PRICING

FOR MORE INFORMATION, PLEASE CONTACT OUR
CUSTOMER CALL CENTER AT 800-222-4016 (9:00AM - 7:00PM EST)
OR EMAIL CUSTOMERCARE@HIGH5SPORTSWEAR.COM



BOTH ADULT & YOUTH SHOWN
WITH THE 15080 PIPED
DOUBLE-KNIT BASEBALL PANT
SEE PAGE 25 FOR MORE INFORMATION

ACE TWO-BUTTON JERSEY
12120 Adult AS, AM, AL, AXL \$29.50 A2XL \$33.50 A3XL \$36.50

12121 Youth YS, YM, YL \$27.50

TWO-BUTTON: Two-button placket for easy decoration

• Main fabric in 100% polyester with Essortex wicking properties • Side panels in 92% polyester / 8% spandex for comfort and breathability

BLACK/SILVER GREY/WHITE



SCARLET/SILVER GREY/WHITE



ROYAL/SILVER GREY/WHITE



NAVY/SILVER GREY/WHITE



PURPLE/SILVER GREY/WHITE



WHITE/SILVER GREY/WHITE



COLUMBIA BLUE/WHITE/NAVY



SCARLET/NAVY/WHITE



NAVY/WHITE/ATHLETIC GOLD



ROYAL/WHITE/SCARLET





SHOWN WITH THE 15040 CLASSIC DOUBLE-KNIT BASEBALL PANT
SEE PAGE 24 FOR MORE INFORMATION

**DECORATION & VOLUME PRICING**

FOR MORE INFORMATION, PLEASE CONTACT OUR
CUSTOMER CALL CENTER AT 800-222-4016 (9:00AM - 7:00PM EST)
OR EMAIL CUSTOMERCARE@HIGH5SPORTSWEAR.COM



ADULT & YOUTH SHOWN WITH THE 15080
PIPED DOUBLE-KNIT BASEBALL PANT
SEE PAGE 25 FOR MORE INFORMATION

WILDCARD TWO-BUTTON JERSEY**12200**

Adult AS, AM, AL, AXL \$21.90 A2XL \$25.90 A3XL \$29.90

12201

Youth YS, YM, YL \$19.90

TWO-BUTTON: Two-button placket for easy decoration

• Main fabric in 92% polyester / 8% spandex with moisture management wicking properties • Sleeves in 100% polyester with Essortex wicking properties





SHOWN WITH THE 15040 CLASSIC DOUBLE-KNIT BASEBALL PANT
SEE PAGE 24 FOR MORE INFORMATION



DECORATION & VOLUME PRICING

FOR MORE INFORMATION, PLEASE CONTACT OUR
CUSTOMER CALL CENTER AT 800-222-4016 (9:00AM - 7:00PM EST)
OR EMAIL CUSTOMERCARE@HIGH5SPORTSWEAR.COM



ADULT SHOWN WITH THE 15080 PIPED
DOUBLE-KNIT BASEBALL PANT
SEE PAGE 25 FOR MORE INFORMATION



YOUTH SHOWN WITH THE
15040 CLASSIC DOUBLE-KNIT BASEBALL PANT
SEE PAGE 24 FOR MORE INFORMATION

GRAVITY TWO-BUTTON JERSEY 12130

Adult AS, AM, AL, AXL \$26.00 A2XL \$30.00

12131

Youth YS, YM, YL \$24.00

TWO-BUTTON: Two-button placket for easy decoration

• Main fabric in 100% polyester with moisture management wicking properties • Side panel inserts of 92% polyester and 8% spandex pinhole mesh



SIDE PANELS MATCH SLEEVES



SIDE PANELS MATCH BODY

SIDE PANELS MATCH CHEST INSERTS



DECORATION & VOLUME PRICING

FOR MORE INFORMATION, PLEASE CONTACT OUR
 CUSTOMER CALL CENTER AT 800-222-4016 (9:00AM - 7:00PM EST)
 OR EMAIL CUSTOMERCARE@HIGH5SPORTSWEAR.COM

ELLIPSE TWO-BUTTON JERSEY	12050 Adult AS, AM, AL, AXL \$30.30 A2XL \$34.30 A3XL \$37.30	12051 Youth YS, YM, YL \$28.30
TWO-BUTTON: Two-button placket for easy decoration		
• 100% polyester with moisture management wicking properties • Droptail body • Silver Grey inset panel with piping detail		



DECORATION & VOLUME PRICING

FOR MORE INFORMATION, PLEASE CONTACT OUR
CUSTOMER CALL CENTER AT 800-222-4016 (9:00AM - 7:00PM EST)
OR EMAIL CUSTOMERCARE@HIGH5SPORTSWEAR.COM

THE IMPACT FULL-BUTTON JERSEY: SIX-BUTTON FRONT SPACED
FOR EASY DECORATION (YOUTH HAS FIVE BUTTONS)



THE IMPACT TWO-BUTTON JERSEY: TWO-BUTTON
PLACKET FOR EASY DECORATION



SILVER GREY COLOR MATCHES BOTH THE CLASSIC
AND 14-OZ. DOUBLE-KNIT BASEBALL PANTS



ADULT & YOUTH SHOWN WITH THE 15080 PIPED
DOUBLE-KNIT BASEBALL PANT
SEE PAGE 25 FOR MORE INFORMATION

IMPACT TWO-BUTTON JERSEY

12070 Adult AS, AM, AL, AXL **\$27.40** A2XL **\$31.40** A3XL **\$34.40**

12071 Youth YS, YM, YL **\$25.40**

TWO-BUTTON: Two-button placket for easy decoration

• 100% polyester flatback mesh with moisture management wicking properties • Droptail body

**IMPACT FULL-BUTTON JERSEY**

12080 Adult AS, AM, AL, AXL **\$30.10** A2XL **\$34.10** A3XL **\$37.10**

12081 Youth YS, YM, YL **\$28.10**

FULL-BUTTON: Six-button front spaced for easy decoration (youth has five buttons)

• 100% polyester flatback mesh with moisture management wicking properties • Droptail body





SHOWN WITH THE 15080 PIPED DOUBLE-KNIT BASEBALL PANT
SEE PAGE 25 FOR MORE INFORMATION

SEE PAGE 6 FOR MORE INFO ON
THE ACE TWO-BUTTON JERSEY
A MODERN CLASSIC WITH ALL-STAR POWER

DECORATION & VOLUME PRICING

FOR MORE INFORMATION, PLEASE CONTACT OUR
CUSTOMER CALL CENTER AT 800-222-4016 (9:00AM - 7:00PM EST)
OR EMAIL CUSTOMERCARE@HIGH5SPORTSWEAR.COM



THE ACE FULL-BUTTON JERSEY: SIX-BUTTON FRONT SPACED FOR
EASY DECORATION (YOUTH HAS FIVE BUTTONS)

**ACE FULL-BUTTON JERSEY****12220**Adult AS, AM, AL, AXL **\$31.00** A2XL **\$35.00** A3XL **\$38.00****12221**Youth YS, YM, YL **\$29.00****FULL-BUTTON:** Six-button front spaced for easy decoration (youth has five buttons)

• Main fabric in 100% polyester with Essortex wicking properties • Side panels in 92% polyester / 8% spandex for comfort and breathability

BLACK/SILVER GREY/WHITE



SCARLET/SILVER GREY/WHITE



ROYAL/SILVER GREY/WHITE



NAVY/SILVER GREY/WHITE



PURPLE/SILVER GREY/WHITE



WHITE/SILVER GREY/WHITE



COLUMBIA BLUE/WHITE/NAVY



SCARLET/NAVY/WHITE



NAVY/WHITE/ATHLETIC GOLD



ROYAL/WHITE/SCARLET





SHOWN WITH THE 15040 CLASSIC
DOUBLE-KNIT BASEBALL PANT
SEE PAGE 24 FOR MORE INFORMATION

DESIGNED FOR *GAME DAY, TRAINING, AND SIDELINE*
WHETHER YOU ARE PLAYING, TRAINING, COACHING OR SUPPORTING,
THE EVOLUTION SERIES WAS DESIGNED FOR EVERY OCCASION.

THE NEW PRINTED EVOLUTION SHORT SLEEVE JERSEY



FRAGMENT PRINT DETAIL



CONTRAST COVER STITCH DETAIL

PRINTED EVOLUTION SS JERSEY SHOWN WITH THE
15040 CLASSIC DOUBLE-KNIT BASEBALL PANT
SEE PAGE 24 FOR MORE INFORMATION

EVOLUTION SS JERSEY SHOWN WITH THE 15080
PIPED DOUBLE-KNIT BASEBALL PANT
SEE PAGE 25 FOR MORE INFORMATION



EVOLUTION SHORT SLEEVE JERSEY

DECORATION & VOLUME PRICING

FOR MORE INFORMATION, PLEASE CONTACT OUR
CUSTOMER CALL CENTER AT 800-222-4016 (9:00AM - 7:00PM EST)
OR EMAIL CUSTOMERCARE@HIGH5SPORTSWEAR.COM

NEW PRINTED EVOLUTION SHORT SLEEVE AVAILABLE 12/1/2015

72330 Adult AS, AM, AL, AXL \$19.50 A2XL \$23.50 A3XL \$26.50

72331 Youth YS, YM, YL \$17.50

• Main fabric is 100% polyester moisture wicking micro interlock with mechanical stretch • Fragment Print inserts and sleeves are 100% polyester micro pique

SCARLET/FRAGMENT PRINT/WHITE



BLACK/FRAGMENT PRINT/WHITE



NAVY/FRAGMENT PRINT/WHITE



WHITE/FRAGMENT PRINT/WHITE



ROYAL/FRAGMENT PRINT/WHITE



GRAPHITE/FRAGMENT PRINT/WHITE



EVOLUTION SHORT SLEEVE

72300 Adult AS, AM, AL, AXL \$18.50 A2XL \$22.50 A3XL \$26.50

72301 Youth YS, YM, YL \$16.50

• Main fabric is 100% polyester moisture wicking micro interlock with mechanical stretch • Inserts are 92% polyester/8% spandex lightweight pinhole mesh

ROYAL/GRAPHITE/WHITE



BLACK/GRAPHITE/WHITE



SCARLET/GRAPHITE/WHITE



NAVY/GRAPHITE/WHITE



GRAPHITE/GRAPHITE/WHITE



MAROON/GRAPHITE/WHITE



ORANGE/GRAPHITE/WHITE



FOREST/GRAPHITE/WHITE



WHITE/WHITE/WHITE



PURPLE/GRAPHITE/WHITE



LIME/GRAPHITE/WHITE



ATH GOLD/GRAPHITE/WHITE





DECORATION & VOLUME PRICING

FOR MORE INFORMATION, PLEASE CONTACT OUR
CUSTOMER CALL CENTER AT 800-222-4016 (9:00AM - 7:00PM EST)
OR EMAIL CUSTOMERCARE@HIGH5SPORTSWEAR.COM



ADULT & YOUTH SHOWN WITH THE
15040 CLASSIC DOUBLE-KNIT BASEBALL PANT
SEE PAGE 24 FOR MORE INFORMATION

KINETIC JERSEY 22820 Adult AS, AM, AL, AXL **\$21.50** A2XL **\$25.50** **22821** Youth YXS, YS, YM, YL **\$19.50**

• 100% polyester with moisture management wicking properties • Contrast collar and cover stitch details



DECORATION & VOLUME PRICING

FOR MORE INFORMATION, PLEASE CONTACT OUR
CUSTOMER CALL CENTER AT 800-222-4016 (9:00AM - 7:00PM EST)
OR EMAIL CUSTOMERCARE@HIGH5SPORTSWEAR.COM

NEW COLORS FOR 2016
POWER ORANGE/BLACK & RASPBERRY/WHITE

SHOWN WITH THE 15040 CLASSIC DOUBLE-KNIT BASEBALL PANT
SEE PAGE 24 FOR MORE INFORMATION

**HAWK JERSEY****22870**

Adult AS, AM, AL, AXL \$17.90 AZXL \$21.90

22871

Youth YXS, YS, YM, YL \$15.90

• 100% polyester with moisture management wicking properties • Comfortable two-piece collar





DECORATION & VOLUME PRICING

FOR MORE INFORMATION, PLEASE CONTACT OUR
CUSTOMER CALL CENTER AT 800-222-4016 (9:00AM - 7:00PM EST)
OR EMAIL CUSTOMERCARE@HIGH5SPORTSWEAR.COM

TEMPEST JERSEY 22710 Adult AS, AM, AL, AXL \$24.10 A2XL \$28.10 22711 Youth YXS, YS, YM, YL \$22.10

• 100% polyester with moisture management wicking properties • Piping detail on front and back



ESSORTEX TWO-BUTTON JERSEY 12060 Adult AS, AM, AL, AXL \$16.30 A2XL \$20.30 A3XL \$23.30 12061 Youth YS, YM, YL \$14.90

TWO-BUTTON: Two-button placket for easy decoration • 100% polyester with moisture management wicking properties



**DECORATION & VOLUME PRICING**

FOR MORE INFORMATION, PLEASE CONTACT OUR
CUSTOMER CALL CENTER AT 800-222-4016 (9:00AM - 7:00PM EST)
OR EMAIL CUSTOMERCARE@HIGH5SPORTSWEAR.COM

LIBERTY JERSEY**22780** Adult AS, AM, AL, AXL \$17.50 A2XL \$21.50**22781** Youth YXS, YS, YM, YL \$15.50

• 100% polyester with moisture management wicking properties

**ESSORTEX SLEEVELESS T-SHIRT****32160** Adult AS, AM, AL, AXL \$11.00 A2XL \$15.00 A3XL \$18.00**32170** Youth YM, YL \$10.20**UNDERSIZE**

• 100% polyester with moisture management wicking properties • Undersize styles are designed to fit under a jersey, choose one size up for a looser fit





SHOWN WITH THE 15040 CLASSIC
DOUBLE-KNIT BASEBALL PANT
SEE PAGE 24 FOR MORE INFORMATION

THE *EVOLUTION SERIES* LONG SLEEVE
DESIGNED TO KEEP YOU WARMED UP FOR THE GAME



THE NEW PRINTED EVOLUTION LONG SLEEVE JERSEY



FRAGMENT PRINT DETAIL



CONTRAST COVER STITCH DETAIL



EVOLUTION LONG SLEEVE JERSEY

DECORATION & VOLUME PRICING

FOR MORE INFORMATION, PLEASE CONTACT OUR
CUSTOMER CALL CENTER AT 800-222-4016 (9:00AM - 7:00PM EST)
OR EMAIL CUSTOMERCARE@HIGH5SPORTSWEAR.COM

NEW PRINTED EVOLUTION LONG SLEEVE AVAILABLE 12/1/2015**72340** Adult AS, AM, AL, AXL \$24.00 AZXL \$28.00 A3XL \$31.00**72341** Youth YS, YM, YL \$22.00

• Main fabric is 100% polyester moisture wicking micro interlock with mechanical stretch • Fragment Print inserts and sleeves are 100% polyester micro pique

SCARLET/FRAGMENT PRINT/WHITE



BLACK/FRAGMENT PRINT/WHITE



NAVY/FRAGMENT PRINT/WHITE



WHITE/FRAGMENT PRINT/WHITE



ROYAL/FRAGMENT PRINT/WHITE



GRAPHITE/FRAGMENT PRINT/WHITE

**EVOLUTION LONG SLEEVE****72310** Adult AS, AM, AL, AXL \$23.00 AZXL \$27.00 A3XL \$30.00**72311** Youth YS, YM, YL \$21.00

• Main fabric is 100% polyester moisture wicking micro interlock with mechanical stretch • Inserts are lightweight pinhole mesh, 92% polyester/8% spandex

ROYAL/GRAPHITE/WHITE



BLACK/GRAPHITE/WHITE



SCARLET/GRAPHITE/WHITE



NAVY/GRAPHITE/WHITE



GRAPHITE/GRAPHITE/WHITE



MAROON/GRAPHITE/WHITE



ORANGE/GRAPHITE/WHITE



FOREST/GRAPHITE/WHITE



WHITE/WHITE/WHITE



CLASSIC DOUBLE-KNIT BASEBALL PANT			15040	Adult AS, AM, AL, AXL \$28.30	A2XL \$32.30	15041	Youth YS, YM, YL, YXL \$24.30
33" INSEAM ON ADULT LARGE	25 1/2" INSEAM ON YOUTH MEDIUM	• 11-oz. 100% polyester double-knit • Two-snap closure with nylon zipper • Five pro-style belt loops • Double-layer fabric at knee area • Two double-welt set-in back pockets					
• Two double-welt set-in back pockets • Elastic waistband • Double-needle hems (easily shortened for custom length)							



PIPED CLASSIC DOUBLE-KNIT BASEBALL PANT			15050	Adult AS, AM, AL, AXL \$29.70	A2XL \$33.70	15051	Youth YS, YM, YL, YXL \$27.30
33" INSEAM ON ADULT LARGE	25 1/2" INSEAM ON YOUTH MEDIUM	• 11-oz. 100% polyester double-knit • Contrasting piping sewn in side seam • Two-snap closure with nylon zipper • Five pro-style belt loops • Double-layer fabric at knee area					
• Two double-welt set-in back pockets • Elastic waistband • Double-needle hems (easily shortened for custom length)							



PIPED DOUBLE-KNIT BASEBALL PANT**15080**

Adult AS, AM, AL, AXL \$35.40 AZXL \$39.40

15081

Youth YS, YM, YL, YXL \$29.00

33" INSEAM ON ADULT LARGE

25 1/2" INSEAM ON YOUTH MEDIUM

• 14-oz. 100% polyester double-knit with moisture management wicking properties • Two-snap closure with brass zipper • Seven pro-style belt loops • Double-layer fabric at knee area

• Two double-welt set-in back pockets • Anti-roll elastic waistband • Double-needle hems (easily shortened for custom length)



WHITE/BLACK

WHITE/NAVY



SILVER GREY/BLACK

SILVER GREY/NAVY



WHITE/ROYAL

WHITE/SCARLET



SILVER GREY/ROYAL

SILVER GREY/SCARLET



SEVEN PRO-STYLE BELT LOOPS



IMPROVED AND CONSISTENT SIZING

**DOUBLE-KNIT PULL-UP BASEBALL PANT****19420**

Adult AS, AM, AL, AXL \$14.80 AZXL \$18.80

19421

Youth YXS, YS, YM, YL, YXL \$9.80

24" INSEAM ON ADULT LARGE

17" INSEAM ON YOUTH MEDIUM

• 10.5-oz. 100% polyester double-knit • Double-layer fabric at knee area • Back patch pocket on right • Four-needle, 2" elastic waistband with inside drawcord • Elastic waistband



WHITE



SILVER GREY



BLACK



THE 2016 HIGH FIVE COLLECTION

**BANDIT PRINT INSET**

STYLES: 12230 AS-A3XL / 12231 YS-YL



PAGE 5

\$26.00**BANDIT**

STYLES: 12210 AS-A3XL / 12211 YS-YL



PAGE 5

\$25.00**ACE TWO-BUTTON**

STYLES: 12120 AS-A3XL / 12121 YS-YL



PAGE 7

\$29.50**WILDCARD TWO-BUTTON**

STYLES: 12200 AS-A3XL / 12201 YS-YL



PAGE 9

\$21.90**GRAVITY TWO-BUTTON**

STYLES: 12130 AS-A2XL / 12131 YS-YL



PAGE 11

\$26.00**ELLIPSE TWO-BUTTON**

STYLES: 12050 AS-A3XL / 12051 YS-YL



PAGE 12

\$30.30**IMPACT FULL-BUTTON**

STYLES: 12080 AS-A3XL / 12081 YS-YL



PAGE 13

\$30.10**IMPACT TWO-BUTTON**

STYLES: 12070 AS-A3XL / 12071 YS-YL



PAGE 13

\$27.40**ACE FULL-BUTTON**

STYLES: 12220 AS-A3XL / 12221 YS-YL



PAGE 15

\$31.00**PRINTED EVOLUTION SS**

STYLES: 72330 AS-A3XL / 72331 YS-YL



PAGE 17

\$19.50**EVOLUTION SS**

STYLES: 72300 AS-A3XL / 72301 YS-YL



PAGE 17

\$18.50**KINETIC**

STYLES: 22820 AS-A2XL / 22821 YXS-YL



PAGE 18

\$21.50**HAWK**

STYLES: 22870 AS-A2XL / 22871 YXS-YL



PAGE 19

\$17.90**TEMPEST**

STYLES: 22710 AS-A2XL / 22711 YXS-YL



PAGE 20

\$24.10**ESSORTEX TWO-BUTTON**

STYLES: 12060 AS-A3XL / 12061 YS-YL



PAGE 20

\$16.30**LIBERTY**

STYLES: 22780 AS-A2XL / 22781 YXS-YL



PAGE 21

\$17.50**ESSORTEX SLEEVELESS**

STYLES: 32160 AS-A3XL / 32161 YM-YL



PAGE 21

\$11.00**PRINTED EVOLUTION LS**

STYLES: 72340 AS-A3XL / 72341 YS-YL



PAGE 23

\$24.00**EVOLUTION LS**

STYLES: 72310 AS-A3XL / 72311 YS-YL



PAGE 23

\$23.00**CLASSIC DOUBLE-KNIT**

STYLES: 15040 AS-A2XL / 15041 YS-YXL



PAGE 24

\$28.30**PIPED CLASSIC DOUBLE-KNIT**

STYLES: 15050 AS-A3XL / 15051 YS-YXL



PAGE 24

\$29.70**PIPED DOUBLE-KNIT**

STYLES: 15080 AS-A2XL / 15081 YS-YXL



PAGE 25

\$35.40**DOUBLE-KNIT PULL-UP**

STYLES: 19420 AS-A2XL / 19421 YXS-YXL



PAGE 5

\$14.80**WOMEN'S GALAXY**

STYLES: 12172 WS-W2XL / 12173 GM-GL



PAGE 29

\$26.00

CALL 800-222-4016 FOR LEAGUE AND VOLUME PRICING

WOMEN'S FAUX FRONT STYLES: 12142 WS-W2XL / 12143 GM-GL  PAGE 31 \$26.00	WOMEN'S PRINTED EVOLUTION STYLES: 72332 WS-W2XL / 72332 GS-GL  PAGE 33 \$19.00	WOMEN'S EVOLUTION STYLES: 72322 WS-W2XL / 72323 GS-GL  PAGE 33 \$18.00	WOMEN'S HAWK STYLES: 22872 WS-W2XL  PAGE 35 \$17.90	WOMEN'S LIGHTNING STYLES: 12182 WS-W2XL / 12183 GM-GL  PAGE 37 \$17.00	WOMEN'S DYNAMITE STYLES: 12162 WS-W2XL / 12163 GS-GL  PAGE 39 \$18.00
WOMEN'S WAVE STYLES: 12032 WS-W2XL / 12033 GM-GL  PAGE 41 \$17.70	WOMEN'S FLEX STYLES: 12022 WS-W2XL / 12023 GS-GL  PAGE 41 \$15.60	WOMEN'S FLEX SHORT STYLES: 15022 WS-W2XL / 15023 GS-GL  PAGE 41 \$14.50	WOMEN'S SPIRIT STYLES: 12102 WS-W2XL / 12103 GM-GL  PAGE 42 \$24.60	WOMEN'S FEVER JERSEY/SHORT JERSEY STYLES: 12152 WS-W2XL / 12153 GS-GL SHORT STYLES: 15142 WS-W2XL / 15143 GS-GL  PAGE 43 \$20.00/\$17.00	SPIRAL FULL-LENGTH STYLES: 15152 WS-W2XL / 15153 GM-GL  PAGE 44 \$33.00
ARC STYLES: 15122 WS-W2XL / 15123 GM-GL  PAGE 44 \$31.00	UNBELTED STYLES: 15132 WS-W2XL / 15133 GS-GL  PAGE 45 \$22.00	PIPED PROSTYLE LOW-RISE STYLES: 15102 WS-W2XL / 15103 GS-GL  PAGE 45 \$33.30	PROSTYLE LOW-RISE STYLES: 15052 WS-W2XL / 15053 GS-GL  PAGE 45 \$28.90	SIX-PANEL CAP STYLES: 19700 ADULT ONE SIZE 19701 YOUTH ONE SIZE  PAGE 48 \$4.60	SPORT TWILL VISOR STYLES: 19760 ADULT ONE SIZE 19761 YOUTH ONE SIZE  PAGE 48 \$3.70
HOLLOWAY QUALIFIER HEADBAND STYLES: 29222 ONE SIZE FITS MOST  PAGE 48 \$11.00	DAGGER SLEEVE STYLES: 29100 ADULT S/M & L/XL 12231 YOUTH ONE SIZE  PAGE 48 \$10.00	BASEBALL BELT STYLES: 19820 ADULT ONE SIZE 19821 YOUTH ONE SIZE  PAGE 48 \$7.40	ATHLETIC SOCK STYLE: 28030 SMALL, MEDIUM, LARGE  PAGE 49 \$6.40	GAME SOCK STYLE: 19810 SMALL, MEDIUM, LARGE  PAGE 49 \$5.60	STIRRUP SOCK STYLE: 19800 SMALL, MEDIUM, LARGE  PAGE 49 \$5.90
ELITE TRAINING BAG STYLE: 27880 ONE SIZE  PAGE 50 \$27.00	BACKPACK STYLE: 27850 ONE SIZE  PAGE 50 \$21.60	TRAINING BAG STYLE: 27790 ONE SIZE  PAGE 51 \$21.50	GEARBAG STYLE: 27870 ONE SIZE  PAGE 51 \$25.00	STADIUM EQUIPMENT BAG STYLE: 27720 ONE SIZE  PAGE 51 \$28.50	DRAWSTRING BACKPACK STYLE: 27760 ONE SIZE  PAGE 51 \$8.20



SHOWN WITH THE 15152 SPIRAL FULL-LENGTH SOFTBALL PANT
SEE PAGE 44 FOR MORE INFORMATION

THE *GALAXY* FULL-BUTTON JERSEY
INCREASE YOUR ALL-STAR POTENTIAL

DECORATION & VOLUME PRICING

FOR MORE INFORMATION, PLEASE CONTACT OUR
CUSTOMER CALL CENTER AT 800-222-4016 (9:00AM - 7:00PM EST)
OR EMAIL CUSTOMERCARE@HIGH5SPORTSWEAR.COM



SHOWN WITH THE 15152 SPIRAL FULL-LENGTH SOFTBALL PANT
SEE PAGE 44 FOR MORE INFORMATION

GALAXY FULL-BUTTON JERSEY 12172 Women's WS, WM, WL, WXL **\$26.00** W2XL **\$30.00** **12173** Girls' GM, GL **\$24.00**

• Main fabric in 100% polyester grid mock mesh with moisture management wicking properties • Inserts in 92% polyester / 8% spandex pinhole mesh





SHOWN WITH THE 15122 ARC
SOFTBALL PANT SOFTBALL PANT
SEE PAGE 44 FOR MORE INFORMATION

THE *FAUX FRONT* JERSEY
ALLOWS FOR EASY DECORATION

DECORATION & VOLUME PRICING

FOR MORE INFORMATION, PLEASE CONTACT OUR
CUSTOMER CALL CENTER AT 800-222-4016 (9:00AM - 7:00PM EST)
OR EMAIL CUSTOMERCARE@HIGH5SPORTSWEAR.COM



SHOWN WITH THE
15122 ARC SOFTBALL PANT
SEE PAGE 44 FOR MORE INFORMATION

FAUX FRONT JERSEY 12142 Women's WS, WM, WL, WXL **\$26.00** WZXL **\$30.00** **12143** Girls' GM, GL **\$24.00**

• Main fabric in 100% polyester flatback mesh with moisture management wicking properties • Inserts in 92% polyester / 8% spandex pinhole mesh





SHOWN WITH THE 15052 PROSTYLE LOW-RISE SOFTBALL PANT
SEE PAGE 45 FOR MORE INFORMATION

DESIGNED FOR *GAME DAY, TRAINING, AND SIDELINE*
**WHETHER YOU ARE PLAYING, TRAINING, COACHING OR SUPPORTING,
THE EVOLUTION SERIES WAS DESIGNED FOR EVERY OCCASION.**

DECORATION & VOLUME PRICING

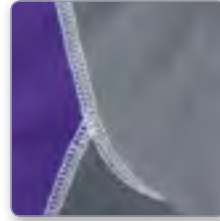
FOR MORE INFORMATION, PLEASE CONTACT OUR
CUSTOMER CALL CENTER AT 800-222-4016 (9:00AM - 7:00PM EST)
OR EMAIL CUSTOMERCARE@HIGH5SPORTSWEAR.COM



THE NEW WOMEN'S PRINTED EVOLUTION SHORT SLEEVE JERSEY



FRAGMENT PRINT DETAIL



CONTRAST COVER STITCH DETAIL

SHOWN WITH THE
15102 PIPED PROSTYLE
LOW-RISE SOFTBALL PANT
SEE PAGE 45 FOR MORE INFO

SHOWN WITH THE
15052 PROSTYLE
LOW-RISE SOFTBALL PANT
SEE PAGE 45 FOR MORE INFO



WOMEN'S EVOLUTION SHORT SLEEVE JERSEY

NEW WOMEN'S PRINTED EVOLUTION S/S AVAILABLE 12/1/15**72332** Women's WS, WM, WL, WXL **\$19.00** W2XL **\$21.00****72333** Girls' GS, GM, GL **\$17.00****WOMEN'S-SPECIFIC CONTOURED FIT**

• Main fabric is 100% polyester moisture wicking micro interlock with mechanical stretch • Fragment Print inserts and sleeves are 100% polyester micro pique

SCARLET/FRAGMENT PRINT/WHITE



BLACK/FRAGMENT PRINT/WHITE



NAVY/FRAGMENT PRINT/WHITE



WHITE/FRAGMENT PRINT/WHITE



RASPBERRY/FRAGMENT PRINT/WHITE



ROYAL/FRAGMENT PRINT/WHITE



GRAPHITE/FRAGMENT PRINT/WHITE

**WOMEN'S EVOLUTION SHORT SLEEVE****72322** Women's WS, WM, WL, WXL **\$18.00** W2XL **\$20.00****72323** Girls' GS, GM, GL **\$16.00****WOMEN'S-SPECIFIC CONTOURED FIT**

• Main fabric is 100% polyester moisture wicking micro interlock with mechanical stretch • Inserts are 92% polyester/8% spandex lightweight pinhole mesh

ROYAL/GRAPHITE/WHITE



BLACK/GRAPHITE/WHITE



SCARLET/GRAPHITE/WHITE



NAVY/GRAPHITE/WHITE



RASPBERRY/GRAPHITE/WHITE



LIME/GRAPHITE/WHITE



PURPLE/GRAPHITE/WHITE



COLUMBIA BLUE/WHITE



ORANGE/GRAPHITE/WHITE



FOREST/GRAPHITE/WHITE



MARBON/GRAPHITE/WHITE

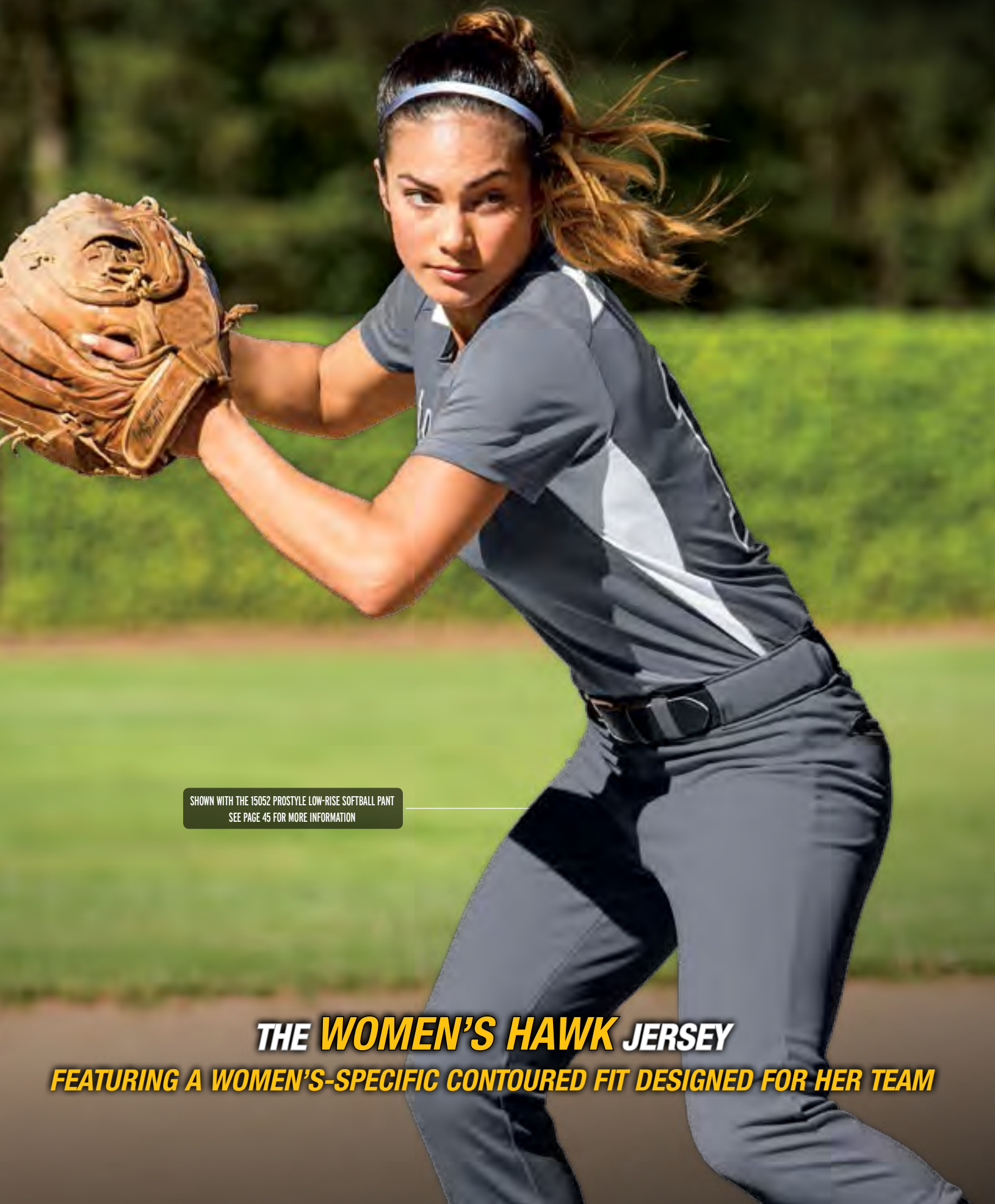


WHITE/WHITE/WHITE



GRAPHITE/GRAPHITE/WHITE





SHOWN WITH THE 15052 PROSTYLE LOW-RISE SOFTBALL PANT
SEE PAGE 45 FOR MORE INFORMATION

THE *WOMEN'S HAWK* JERSEY
FEATURING A WOMEN'S-SPECIFIC CONTOURED FIT DESIGNED FOR HER TEAM

DECORATION & VOLUME PRICING

FOR MORE INFORMATION, PLEASE CONTACT OUR
CUSTOMER CALL CENTER AT 800-222-4016 (9:00AM - 7:00PM EST)
OR EMAIL CUSTOMERCARE@HIGH5SPORTSWEAR.COM

**NEW COLORS FOR 2016**
POWER ORANGE/BLACK & RASPBERRY/WHITE

SHOWN WITH THE
15052 PROSTYLE LOW-RISE SOFTBALL PANT
SEE PAGE 45 FOR MORE INFORMATION

**WOMEN'S HAWK JERSEY****22872**

Women's WXS, WS, WM, WL, WXL \$17.90 W2XL \$21.90

22871

Youth YXS, YS, YM, YL \$15.90

WOMEN'S-SPECIFIC CONTOURED FIT

• 100% polyester with moisture management wicking properties • Comfortable two-piece collar

GRAPHITE/WHITE



SCARLET/WHITE



MAROON/WHITE



KELLY/BLACK



FOREST/WHITE



LIME/WHITE



BLACK/WHITE



ROYAL/WHITE



VEGAS GOLD/WHITE



POWER ORANGE/BLACK



ATHLETIC GOLD/WHITE



ROYAL/ATHLETIC GOLD



NAVY/WHITE



ORANGE/WHITE



POWER BLUE/WHITE



PURPLE/WHITE



WHITE/WHITE



POWER YELLOW/BLACK



COLUMBIA BLUE/BLACK



RASPBERRY/WHITE





DESIGNED AND READY FOR SUBLIMATION

THE LIGHTNING V-NECK WAS DESIGNED SPECIFICALLY TO ALLOW FOR SUBLIMATION DECORATION

THE LIGHTNING V-NECK WAS DESIGNED SPECIFICALLY TO ALLOW FOR SUBLIMATION DECORATION

Take embellishment to the next level with Sublimation! Sublimation printing is the application of specialty inks onto fabric using a heat press. The combination of heat, time and pressure causes these special inks to convert directly from a solid to a gaseous state. They penetrate the surface and fuse to the fibers of the fabric so that a permanent, full-color image is formed.

This printing technique is a premium alternative to Screen Print. It's perfect for picture quality images with many colors. Because the decoration becomes a part of the fabric instead of sitting on top of the fabric, color will not crack, peel or fade. Garments decorated with this type of printing are lighter weight and perform better.



SHOWN WITH THE 15052 PROSTYLE LOW-RISE SOFTBALL PANT
SEE PAGE 45 FOR MORE INFORMATION

DECORATION & VOLUME PRICING

FOR MORE INFORMATION, PLEASE CONTACT OUR
CUSTOMER CALL CENTER AT 800-222-4016 (9:00AM - 7:00PM EST)
OR EMAIL CUSTOMERCARE@HIGH5SPORTSWEAR.COM

LIGHTNING V-NECK JERSEY

12182 Women's WS, WM, WL, WXL \$17.00 W2XL \$21.00

12183 Girls' GM, GL \$15.00

• 100% polyester with moisture management wicking properties • Contrast shoulders, side insert and piping

WHITE/WHITE



WHITE/SCARLET



WHITE/NAVY



WHITE/BLACK



WHITE/GRAPHITE



WHITE/ROYAL





SHOWN WITH THE 15052 PROSTYLE
LOW-RISE SOFTBALL PANT
SEE PAGE 45 FOR MORE INFORMATION

**DECORATION & VOLUME PRICING**

FOR MORE INFORMATION, PLEASE CONTACT OUR
CUSTOMER CALL CENTER AT 800-222-4016 (9:00AM - 7:00PM EST)
OR EMAIL CUSTOMERCARE@HIGH5SPORTSWEAR.COM



SHOWN WITH THE
15122 ARC SOFTBALL PANT
SEE PAGE 44 FOR MORE INFORMATION

**DYNAMITE JERSEY****12162**

Women's WS, WM, WL, WXL \$18.00 W2XL \$22.00

12163

Girls' GS, GM, GL \$16.00

• Main fabric in 92% polyester / 8% spandex with moisture management wicking properties





THE **WAVE** & **FLEX** JERSEYS

PAIR EITHER JERSEY WITH THE FLEX SHORT OR ANY OF OUR SOFTBALL PANTS FOR A WINNING COMBINATION
SEE PAGES 44-45 FOR ALL OF THE AVAILABLE SOFTBALL PANT OPTIONS

WAVE JERSEY 12032 Women's WS, WM, WL, WXL \$17.70 W2XL \$21.70

12033 Girls' GS, GM, GL \$15.70

• 100% polyester with moisture management wicking properties • Rib knit V-neck


FLEX JERSEY 12022 Women's WS, WM, WL, WXL \$15.60 W2XL \$19.60

12023 Girls' GS, GM, GL \$14.00

• 100% polyester with moisture management wicking properties • Rib knit V-neck


FLEX SHORT 15022 Women's WS, WM, WL, WXL \$14.50 W2XL \$18.50

15023 Girls' GS, GM, GL \$13.50

5" INSEAM ON WOMEN'S MEDIUM 4" INSEAM ON GIRLS' MEDIUM • 100% polyester with moisture management wicking properties • Elastic waistband with inside drawcord


DECORATION & VOLUME PRICING

 FOR MORE INFORMATION, PLEASE CONTACT OUR
 CUSTOMER CALL CENTER AT 800-222-4016 (9:00AM - 7:00PM EST)
 OR EMAIL CUSTOMERCARE@HIGH5SPORTSWEAR.COM




SHOWN WITH THE 15052 PROSTYLE
LOW-RISE SOFTBALL PANT
SEE PAGE 45 FOR MORE INFORMATION

DECORATION & VOLUME PRICING

FOR MORE INFORMATION, PLEASE CONTACT OUR
CUSTOMER CALL CENTER AT 800-222-4016 (9:00AM - 7:00PM EST)
OR EMAIL CUSTOMERCARE@HIGH5SPORTSWEAR.COM

SPIRIT TWO-BUTTON JERSEY	12102 Women's WS, WM, WL, WXL \$24.60 W2XL \$28.60	12103 Girls' GS, GM, GL \$22.60
---------------------------------	---	--

• 100% polyester with moisture management wicking properties • Two-button placket • Droptail body



DECORATION & VOLUME PRICING

FOR MORE INFORMATION, PLEASE CONTACT OUR
CUSTOMER CALL CENTER AT 800-222-4016 (9:00AM - 7:00PM EST)
OR EMAIL CUSTOMERCARE@HIGH5SPORTSWEAR.COM



SHOWN WITH THE 15142 FEVER SHORT



SHOWN WITH THE 15052 PROSTYLE LOWRISE SOFTBALL
SEE PAGE 45 FOR MORE INFORMATION



SIX INCH NUMBER SIZE
RECOMMENDED FOR
DOUBLE DIGIT APPLICATIONS

FEVER JERSEY**12152**

Women's WS, WM, WL, WXL \$20.00 W2XL \$24.00

12153

Girls' GS, GM, GL \$18.00

• Main fabric is 100% polyester with moisture management wicking properties • Inserts and side panels of 92% polyester and 8% spandex pinhole mesh for comfort and breathability • Droptail body

**FEVER SHORT****15142**

Women's WS, WM, WL, WXL \$17.00 W2XL \$21.00

15143

Girls' GS, GM, GL \$15.00

5" INSEAM ON WOMEN'S MEDIUM

4" INSEAM ON GIRLS' MEDIUM

• Main fabric is 100% polyester with moisture management wicking properties • Inserts and side panels of 92% polyester and 8% spandex pinhole mesh

**SPIRAL FULL-LENGTH SOFTBALL PANT****15152**Women's WS, WM, WL, WXL **\$33.00** WZXL **\$37.00****15153**Girls' GM, GL **\$31.00**

32" INSEAM ON WOMEN'S MEDIUM

26 1/2" INSEAM ON GIRLS' MEDIUM

• Performance double-knit is a 15 oz. polyester with wicking and soil-release properties that are optimized for performance conditions • Double snap front with brass zipper fly

• Elasticized waist with tunnel loops • Easy entry back pockets • Full length open bottom leg • Dual-ply knee protection



BLACK



WHITE



BLUE GREY



REVOLUTIONARY FABRIC TECHNOLOGY FEATURES TOUGH FILAMENT SURFACE YARNS FOR DURABILITY AND ABRASION-RESISTANCE WHILE HAVING SOFT SPUN INSIDE YARNS FOR COMFORT NEXT TO THE SKIN

ARC SOFTBALL PANT**15122**Women's WS, WM, WL, WXL **\$31.00** WZXL **\$35.00****15123**Girls' GS, GM, GL **\$29.00**

20 3/4" INSEAM ON WOMEN'S MEDIUM

15 1/4" INSEAM ON GIRLS' MEDIUM

• 14-oz. 100% polyester double-knit • Two-snap closure with brass zipper • Double-layer fabric at knee area • Two double-welt set-in back pockets

• Elastic waistband with internal drawcord • Elastic cuffs • Piping detail



NAVY/WHITE



WHITE/BLACK



WHITE/SCARLET



SILVER GREY/WHITE



BLACK/WHITE



BLACK/LIME



BLACK/RASPBERRY

**UNBELTED SOFTBALL PANT****15132**Women's WS, WM, WL, WXL **\$22.00** W2XL **\$26.00****15133**Girls' GS, GM, GL **\$20.00**

20 3/4" INSEAM ON WOMEN'S MEDIUM

15 1/4" INSEAM ON GIRLS' MEDIUM

• 11-oz. 100% polyester double-knit • Two-snap closure with brass zipper • Double-layer fabric at knee area • Single patch back pocket • Elastic cuffs • Elastic waistband with internal drawcord

**PIPED PROSTYLE LOW-RISE SOFTBALL PANT****15102**Women's WS, WM, WL, WXL **\$33.30** W2XL **\$37.30****15103**Girls' GS, GM, GL **\$31.50**

20 1/2" INSEAM ON WOMEN'S MEDIUM

15" INSEAM ON GIRLS' MEDIUM

• 14-oz. 100% polyester double-knit • Two-snap closure with nylon zipper • Double-layer fabric at knee area • Two double-welt set-in back pockets • Five pro-style belt loops

• Elastic cuffs • Elastic waistband • Piping detail

**PROSTYLE LOW-RISE SOFTBALL PANT****15052**Women's WS, WM, WL, WXL **\$28.90** W2XL **\$32.90****15053**Girls' GS, GM, GL **\$26.40**

20 1/2" INSEAM ON WOMEN'S MEDIUM

15" INSEAM ON GIRLS' MEDIUM

• 14-oz. 100% polyester double-knit • Two-snap closure with nylon zipper • Double-layer fabric at knee area • Two double-welt set-in back pockets • Five pro-style belt loops

• Elastic cuffs • Elastic waistband • Piping detail





BACK DETAIL OF HEATHER TONAL BLOCKING

**THE HOLLOWAY TUMBLE JACKET****71052** Women's WS, WM, WL, WXL **\$54.00****71053** Girls' GM, GL **\$50.00****JACKET & PANT SOLD SEPARATELY**

• 90% polyester/10% spandex Dry-Excel™ Soft-Stretch™ fabric with tonal contrast heather blocking • Jacket features thumbhole detail on sleeves and front zippered hand warmer pockets



SCARLET/HEATHER/WHITE



BLACK/HEATHER/WHITE



NAVY/HEATHER/WHITE



GRAPHITE/HEATHER/WHITE



ROYAL/HEATHER/WHITE



BLACK/HEATHER/WHITE



NAVY/HEATHER/WHITE



GRAPHITE/HEATHER/WHITE

SPECIALTY OUTERWEAR
for High Five by Holloway**HIGH FIVE** **HOLLOWAY.****THE HOLLOWAY TUMBLE PANT****71552** Women's WS, WM, WL, WXL **\$46.00** Women's Tall (SEE HIGH5SPORTSWEAR.COM FOR SIZING DETAILS) WST, WMT, WLT, WXL **\$52.00****71553** Girls' GM, GL **\$42.00****JACKET & PANT SOLD SEPARATELY**

• 90% polyester/10% spandex Dry-Excel™ Soft-Stretch™ fabric with tonal contrast heather blocking • Pant has yoga-inspired styling and fit with tonal heather blocking and white accent inserts

**THE HOLLOWAY DETERMINATION JACKET****71060** Adult AS, AM, AL, AXL \$39.00 A2XL \$44.00**71061** Youth YS, YM, YL \$35.00

JACKET & PANT SOLD SEPARATELY

CLASSIC FIT

• New Agil-Knit™ is a 100% polyester brushed tricot with a peached finish • Front zippered pockets • Dual inside pockets

**SPECIALTY OUTERWEAR**
for High Five by Holloway**HIGH FIVE**  HOLLOWAY.**THE HOLLOWAY DETERMINATION PANT****71560** Adult AS, AM, AL, AXL \$35.00 A2XL \$39.00**71561** Youth YS, YM, YL \$31.00

JACKET & PANT SOLD SEPARATELY

CLASSIC FIT

• New Agil-Knit™ is a 100% polyester brushed tricot with a peached finish • Elasticized drawstring waist • Side pockets • Banded cuff and hem • Zippered bottom hem

**COTTON TWILL SIX-PANEL CAP****19700**

Adult ONE SIZE \$4.60

19701

Youth ONE SIZE \$4.60

• 100% cotton twill cap • Low profile pro-style crown with curved visor • Fused buckram-backed front panels • Color matching sewn eyelets • Plastic snap size adjuster

**SPORT TWILL VISOR****19760**

Adult ONE SIZE \$3.70

19761

Youth ONE SIZE \$3.70

• 100% cotton twill washed for softness • Three panels with curved visor • Sweatband folds down for easy embroidering • Hook and loop fastener

**THE NEW HOLLOWAY QUALIFIER HEADBAND AVAILABLE 12/1/15****29222**

ONE SIZE FITS MOST \$11.00

• Fit Type: Fitted, ONE SIZE FITS MOST • Maze Mesh fabric is a dry-Excel™ 94% polyester/6% spandex that is layered with our dry-Excel™ micro-Interlock • Interior silicone elastic gripper helps keep headband secure

**THE NEW HOLLOWAY DAGGER SLEEVE AVAILABLE 12/1/15****29100**

Adult S/M \$10.00 L/XL \$10.00

29101

Youth ONE SIZE \$8.00

SLEEVES SOLD INDIVIDUALLY

• Fit Type: Compression • 4-Way compression stretch fabric in 86% polyester/14% spandex • Flatlock stitching to reduce skin abrasion • Elasticized top hem to secure in place

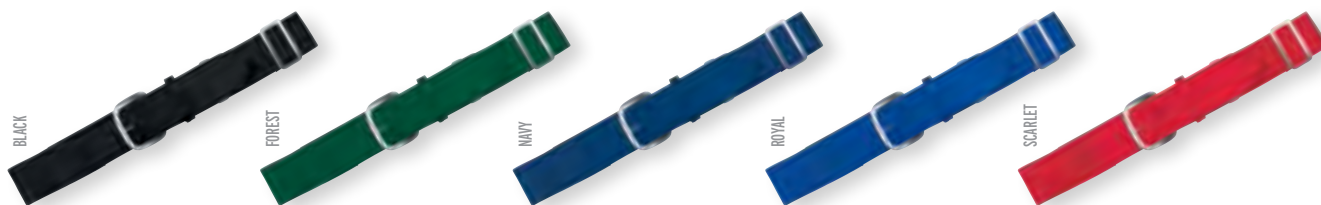
**BASEBALL BELT****19820**

Adult FITS WAIST SIZES 32"-46" \$7.40

19821

Youth FITS WAIST SIZES 18"-32" \$6.70

• 1 1/2" wide elastic webbing on Adult • 1 1/4" wide elastic webbing on Youth • Matching vinyl tabs • Nickel finish buckle and adjustable slider easily fits through all belt loops





PLEASE VISIT **HIGH5SPORTSWEAR.COM**
FOR OUR COMPLETE LINE OF SOCKS

ATHLETIC SOCK 28030

• 80% acrylic/14% nylon/6% elastic • Solid color tube sock



GAME SOCK 19810

• 91% nylon/5% polyester/4% elastic • Solid color tube sock



STIRRUP SOCK 19800

• 43% polyester/35% cotton/16% acrylic/6% elastic • White sock with knitted-in stirrup



SOCK SIZING RECOMMENDATIONS

19800 STIRRUP SOCK • 19810 GAME SOCK • 28030 ATHLETIC SOCK

SMALL: Fit's Women's shoe sizes 4-5 & Youth 1-3 **MEDIUM:** Fits Men's shoe sizes 6-8 & Women's shoe sizes 5-9 **LARGE:** Fit's Men's shoes sizes 9-13+ & Women's 9-12+

SIZE CHARTS

MEASUREMENTS SHOWN BELOW ARE BODY
MEASUREMENTS - NOT ACTUAL GARMENT MEASUREMENTS

ADULT | YOUTH

JERSEYS | TRAINING TOPS

RECOMMENDED SIZE	INDIVIDUAL CHEST SIZE
YXXS	20" - 21"
YXS	21" - 23"
YS	24" - 26"
YM	27" - 30"
YL	31" - 34"
AS	34" - 36"
AM	37" - 40"
AL	41" - 44"
AXL	45" - 48"
A2XL	49" - 52"
A3XL	53" - 56"

SHORTS | TRAINING BOTTOMS

RECOMMENDED SIZE	INDIVIDUAL WAIST SIZE
YXXS	19" - 20"
YXS	20" - 22"
YS	22" - 24"
YM	24" - 26"
YL	26" - 28"
YXL	28" - 30"
AS	29" - 30"
AM	31" - 34"
AL	35" - 38"
AXL	39" - 42"
A2XL	43" - 46"
A3XL	47" - 50"

WOMEN'S | GIRLS'

JERSEYS | TRAINING TOPS

RECOMMENDED SIZE	INDIVIDUAL CHEST SIZE
GS	23" - 25"
GM	26" - 29"
GL	30" - 33"
WXS	32" - 33"
WS	34" - 35"
WM	36" - 37"
WL	38" - 40"
WXL	41" - 43"
W2XL	44" - 47"

SHORTS | TRAINING BOTTOMS

RECOMMENDED SIZE	INDIVIDUAL WAIST SIZE
GS	20" - 22"
GM	23" - 24"
GL	24" - 25"
WXS	22" - 24"
WS	25" - 27"
WM	28" - 30"
WL	31" - 33"
WXL	34" - 36"
W2XL	37" - 39"

GL DIFFERS FROM **WXS** IN BUST SHAPING, AND FIT THROUGH HIPS AND WAIST

GL DIFFERS FROM **WS** IN RISE, INSEAM, AND FIT THROUGH HIPS

UNDERSIZED - GARMENTS SPECIFICALLY MARKED UNDERSIZED ARE INTENDED TO BE CLOSE FITTING, PERFECT AS THE FIRST LAYER OF YOUR UNIFORM.

IF YOU PREFER A LOOSE FIT - WE RECOMMEND ORDERING UNDERSIZED GARMENTS ONE SIZE LARGER THAN YOUR CHEST IN THE ABOVE SIZE CHART.


ELITE TRAINING BAG 27880 22"LONG x 12" TALL x 12"WIDTH \$27.00

• Heavy duty 600D polyester with PVC backing • Features two large zippered end compartments, internal shoe pouch, one zippered side compartment • Hand straps with adjustable shoulder strap and corded zipper pulls



BLACK/NAVY/GRAPHITE



BLACK/ATH GOLD/GRAPHITE



BLACK/ORANGE/GRAPHITE



BLACK/PURPLE/GRAPHITE



BLACK/BLACK/GRAPHITE



BLACK/MAROON/GRAPHITE



BLACK/FOREST/GRAPHITE



BLACK/NAVY/GRAPHITE



BLACK/LIME/GRAPHITE



BLACK/ROYAL/GRAPHITE



BLACK/SCARLET/GRAPHITE


BACKPACK 27850 17" TALL x 18" WIDTH x 9" DEPTH \$21.60

• Adjustable padded shoulder straps, hand strap and corded zipper pulls • Heavy duty 600D polyester with soft PVC backing • Two zippered side compartments with mesh panels • Mesh paneled zippered interior helmet compartment



NAVY/BLACK/WHITE



SCARLET/BLACK/WHITE



ORANGE/BLACK/WHITE



BLACK/BLACK/WHITE



ROYAL/BLACK/WHITE



PURPLE/BLACK/WHITE



MAROON/BLACK/WHITE



FOREST/BLACK/WHITE



ATH GOLD/BLACK/WHITE



TRAINING BAG 27790 22"LONG x 12"TALL x 12"WIDTH \$21.50

• Heavy duty 600D polyester with soft PVC backing • Two zippered end compartments and one zippered side compartment • Hand straps, adjustable shoulder straps, and corded zipper pulls


GEAR BAG 27870 19"TALL x 10.5"WIDTH x 10.5"DEPTH \$25.00

• Main fabric: 100% polyester heavy denier with soft PVC backing and mesh side panels for ventilation • Drawstring top closure with rainflap • ID holder on back • Front zippered pocket with deep interior pouch holds shoes or accessories • Backpack shoulder straps • Versatile interior compartment features flexible divider, separating the ventilated front section from the main compartment • Helmet fits in either section of the main compartment



WATER BOTTLE HOLDER ON RIGHT SIDE


STADIUM EQUIPMENT BAG 27720 36"LONG x 13"TALL x 14"WIDTH \$28.50

• 600 denier polyester with PVC backing • Zippered side pocket • Corded zipper pulls • Hand straps • Adjustable shoulder strap


DRAWSTRING BACKPACK 27760 18"HEIGHT x 14"WIDTH \$8.20

• 210 denier nylon with PU coating • Hemmed top with drawcord closure • Logo screen printed on lower front • Zippered front pocket • Black bottom with white accent piping • Web tab at bottom corners for reinforcement



FOR NEARLY THIRTY YEARS
HIGH FIVE®
HAS LED THE INDUSTRY IN...

PRODUCT AVAILABILITY

**UNMATCHED PRODUCT AVAILABILITY
BACKED BY STRONG INVENTORY LEVELS.**

SERVICE

**THE BEST CUSTOMER SERVICE IN THE TEAM INDUSTRY. ORDERS PLACED BY
6 PM EST SHIP SAME DAY. WE REACH 90% OF OUR CUSTOMERS IN 3 DAYS OR LESS.**

QUALITY

**HIGH FIVE PRODUCTS ARE BUILT TO
WITHSTAND THE ENTIRE SEASON.**

DEEP IN COLOR & SIZE

**TOP SELLING STYLES COME IN AS MANY AS 20 COLORS!
WE OUTFIT ALL AGES, SHAPES, AND SIZES.**

VALUE

**UNIFORMS DECORATED TO YOUR SPECIFICATIONS.
PACKAGED AND BUNDLING BY INDIVIDUAL TEAM.**

HIGH 5 SPORTSWEAR, INC.

TO ORDER CALL: (800) 222-4016 NOW OPEN FROM 9:00AM TO 7:00PM EST | FAX (206) 574-0276 | WWW.HIGH5SPORTSWEAR.COM

HIGH FIVE® IS A REGISTERED TRADEMARK OF HIGH 5 SPORTSWEAR, INC., 2633 CAMPBELL ROAD SIDNEY, OHIO 45365

PRICES SUBJECT TO CHANGE WITHOUT NOTICE