



# 2017 FOOTBALL



BACK



9571

9601  
PG. 7

# RUN THE OPTION

**Handoff jersey features  
100% polyester heavyweight  
tricot mesh body**



## HANDOFF JERSEY

9570

9571

**SF**

100% polyester heavyweight tricot mesh body • 100% polyester dazzle yoke and sleeves • 90% polyester/10% spandex neck, bottom sleeve insert, side inserts • Collegiate tight fit • Contrast color V-neck collar • Set-in sleeves with elastic cuffs • Contrast color poly/spandex bottom sleeve insert for added stretch and better fit over pads • Contrast color poly/spandex cuffs, sleeve inserts and side panels • Two-needle coverstitched reinforced yoke, armholes, and side seams.

**9570**

Adult: S-3XL

List Price 27.90 (Upcharge for 2XL-3XL)

**9571**

Youth: S-XL

List Price 25.90



BLACK/  
WHITE



WHITE/  
BLACK



RED/  
BLACK



ROYAL/  
BLACK



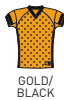
COLUMBIA  
BLUE/  
BLACK



NAVY/  
WHITE



ORANGE/  
BLACK



GOLD/  
BLACK



DARK  
GREEN/  
BLACK



VEGAS  
GOLD/  
BLACK



9565

9610  
PG. 7



BACK

# EYE ON THE LINE

**Contrast color poly/spandex bottom sleeve insert provides stretch and better fit over pads**



FOOTBALL

## SNAP JERSEY

9565

9566



100% polyester heavyweight tricot mesh body • 100% polyester dazzle yoke and sleeves • 90% polyester/10% spandex neck, bottom sleeve insert, side inserts • Collegiate tight fit • Two-color V-neck collar • Set-in sleeves with elastic cuffs • Contrast color poly/spandex bottom sleeve insert for added stretch and better fit over pads • Contrast color poly/spandex cuffs and side panels • Two-needle coverstitched reinforced yoke, armholes, and side seams.

9565

Adult: S-3XL

List Price 27.90 (Upcharge for 2XL-3XL)

9566

Youth: S-XL

List Price 25.90



## DUAL THREAT JERSEY

9550

9551



100% polyester heavyweight tricot mesh body • 100% polyester dazzle yoke and sleeves • 90% polyester/10% spandex bottom sleeve insert

• Printed 90% polyester/10% spandex neck, cuff, and side panels

• Collegiate tight fit • Printed V-neck collar featuring digi camo print • Set-in sleeves with elastic cuffs • Poly/spandex bottom sleeve insert for added stretch and better fit over pads • Two-needle coverstitched reinforced yoke, armholes, and side seams.

**9550** Adult: S-3XL List Price 27.90 (Upcharge for 2XL-3XL)

**9551** Youth: S-XL List Price 25.90



# COLLEGIATE FIT

**Wear it like the pros with these tight fit jerseys**

## SCRAMBLER JERSEY

9560

9561



100% polyester heavyweight tricot mesh body • 100% polyester dazzle two ply yoke and sleeves • 90% polyester/10% spandex collar, cuff, sleeve and side inserts • Collegiate tight fit • V-neck collar • Poly/spandex sleeve insert and side panels for added stretch and better fit over pads

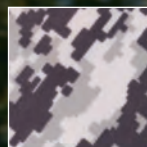
• Set-in sleeves with elastic cuffs • Two-needle coverstitched reinforced yoke, armholes, and side seams.

**9560** Adult: S-3XL List Price 25.00 (Upcharge for 2XL-3XL)

**9561** Youth: S-XL List Price 21.90



DIGI CAMO  
INSERTS



9550



BACK

9610  
PG. 7



BACK

9560

9610  
PG. 7



## DOMINATOR JERSEY

9520

9521

**R** 100% polyester diamond mesh body • 100% polyester dazzle sleeves • 90% polyester/10% spandex inserts • Traditional relaxed fit • V-neck collar • Contrast color shoulder and side inserts • Oversized shoulders and full-cut sleeves to accommodate pads • Set-in sleeves with elastic cuffs • Two-needle coverstitched reinforced yoke, armholes and side seams.

**9520** Adult: S-3XL List Price 27.00 (Upcharge for 2XL-3XL)  
**9521** Youth: S-XL List Price 25.00



## BLITZ JERSEY

9530

9531

**R** 100% polyester diamond mesh body • 100% polyester dazzle sleeves • 90% polyester/10% spandex inserts • Traditional relaxed fit • V-neck collar • Contrast color shoulder and side inserts • Oversized shoulder and full-cut sleeves to accommodate pads • Raglan sleeves with elastic cuffs • Two-needle coverstitched reinforced yoke, armholes and side seams.

**9530** Adult: S-3XL List Price 27.00 (Upcharge for 2XL-3XL)  
**9531** Youth: S-XL List Price 25.00



## INTIMIDATOR JERSEY

9510

9511

**R** 100% polyester diamond mesh body • 100% polyester dazzle 2-ply yoke and sleeves • 90% polyester/10% spandex side inserts • Traditional relaxed fit • V-neck collar • Front and back yoke is two layers • Oversized shoulders and full-cut sleeves to accommodate pads • Poly/spandex side inserts • Set-in sleeves with elastic cuffs • Two-needle coverstitched reinforced yoke, armholes and side seams.

**9510** Adult: S-3XL List Price 23.50 (Upcharge for 2XL-3XL)  
**9511** Youth: S-XL List Price 21.50





9502

9610

## SCRIMMAGE VEST

9502

9503

100% polyester tricot mesh • Elastic armholes for secure fit over pads • Waist length with elastic in hem.

**9502** Adult: S/M, L/XL, 2XL List Price 8.00 (Upcharge for 2XL)  
**9503** Youth: M/L List Price 7.00



BLACK RED ROYAL NAVY ORANGE GOLD

PERFECT FOR  
FLAG FOOTBALL



## TWO-A-DAY JERSEY

9500

9501

**R** 100% polyester diamond mesh • Rib-knit modified V-neck collar • Front and back yoke is two layers • Oversized shoulders and full-cut sleeves to accommodate pads • Set-in sleeves • Two-needle coverstitched reinforced yoke, armholes and side seams.

**9500** Adult: S/M, L/XL, 2XL-3XL List Price 16.30 (Upcharge for 2XL-3XL)  
**9501** Youth: S/M, L/XL List Price 14.00



BLACK WHITE RED ROYAL NAVY MAROON GOLD DARK GREEN



FULLY REVERSIBLE

Not to be worn with pads. For use in non-contact sports only.

## VERGE REVERSIBLE JERSEY

1615

1616

**R** Two layers of 100% polyester tricot mesh • Fully reversible • Wicking knit V-neck collar • Contrast color piping in armholes and side seams • Raglan sleeves • Each layer finished separately for embellishment.

**1615** Adult: S-3XL List Price 23.90 (Upcharge for 2XL-3XL)  
**1616** Youth: S-L List Price 21.90



BLACK/WHITE RED/WHITE ROYAL/WHITE NAVY/WHITE DARK GREEN/WHITE

**PADS NOT INCLUDED**



# INTERCEPTOR PANT

Pair it with our football belt to be the sharpest team on the field



**BELT**

## INTERCEPTOR PANT

**9610 9611**

92% polyester/8% spandex warp knit • 100% polyester tricot mesh interior thigh pockets • 5 panel construction • No fly front • Tricot mesh interior thigh pad pockets • Self-fabric polyester/spandex interior knee pad pockets • Slotted elastic waistband • Two-needle coverstitched reinforced seams throughout for additional strength.

**9610** Adult: S-3XL List Price 37.90 (Upcharge for 2XL-3XL)  
**9611** Youth: XS-XL List Price 35.90



## FOOTBALL BELT

**9615 9616**

100% polypropylene webbing • 1" wide • Two nickel plated D-rings with reinforced stitching • Heat seal edges to resist fraying • End of belt folded and stitched down for finished look • Adult webbing measures 54", youth webbing measures 44".

**9615** Adult Call for pricing  
**9616** Youth Call for pricing



## KICK OFF INTEGRATED PANT

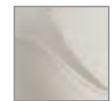
**9605 9606**

92% polyester/8% spandex warp knit • 5 panel construction • Contrast color side inserts • 7 sewn-in EVA pads (hips, tail, thigh, and knees) • Perforated hip and tail pads for extra breathability • Thigh pads reinforced with plastic core • Contoured knee pads • Full length self-fabric belt with D-ring closure • No fly front • Entire pant with pads machine washable.

**9605** Adult: S-3XL List Price 39.90 (Upcharge for 2XL-3XL)  
**9606** Youth: XXS-XXL List Price 35.90



**BREATHABLE PERFORATED TAIL & HIP PADS**



**DURABLE SEAM CONSTRUCTION**

## GRIDIRON INTEGRATED FOOTBALL PANT

**9600 9601**

100% polyester double knit • 5 panel construction • 7 sewn-in EVA pads (hips, tail, thighs and knees) • Perforated hip and tail pads for extra breathability • Thigh pads reinforced with plastic core • Contoured knee pads • Full length self-fabric belt with D-ring closure • No fly front • Entire pant with pads machine washable.

**9600** Adult: S-3XL List Price 33.70 (Upcharge for 2XL-3XL)  
**9601** Youth: XXS-2XL List Price 29.60





2604

9610  
PG. 7



2600

9610  
PG. 7

## HYPERFORM COMPRESSION LONG SLEEVE SHIRT

2604

2605



84% polyester/16% spandex knit • Odor resistant • Wicks moisture • Ultra tight fit • Pad print label • Self-fabric collar • Raglan sleeves • 4-way stretch fabric allows for greater mobility and maintains shape • Flatlock stitching provides comfort and resists chafing.

2604

Adult: S-3XL

List Price 24.00 (Upcharge for 2XL-3XL)

2605

Youth: S-L

List Price 22.00



BLACK



WHITE



RED



ROYAL



NAVY



SILVER



GRAPHITE



WHITE DIGI

# HYPERFORM COMPRESSION

Designed to wear comfortably and maintain shape

## HYPERFORM COMPRESSION SHORT SLEEVE SHIRT

2600

2601



84% polyester/16% spandex knit • Odor resistant • Wicks moisture • Ultra tight fit • Pad print label • Self-fabric collar • Raglan sleeves • 4-way stretch fabric allows for greater mobility and maintains shape • Flatlock stitching provides comfort and resists chafing.

2600

Adult: S-3XL

List Price 21.00 (Upcharge for 2XL-3XL)

2601

Youth: S-L

List Price 19.00



BLACK



WHITE



RED



ROYAL



NAVY



ORANGE



SILVER



LIME



GRAPHITE



WHITE DIGI



ODOR RESISTANCE,  
COMFORT, AND  
DURABILITY

#### HYPERFORM COMPRESSION SLEEVELESS SHIRT

2602

2603



84% polyester/16% spandex knit • Odor resistant • Wicks moisture  
• Ultra tight fit • Pad print label • Self-fabric collar • 4-way stretch  
fabric allows for greater mobility and maintains shape • Flatlock

stitching provides comfort and resists chafing.

2602

Adult: S-3XL

List Price 19.00 (Upcharge for 2XL-3XL)

2603

Youth: S-L

List Price 17.00



BLACK WHITE RED ROYAL NAVY SILVER GRAPHITE



# ROLLER-PRINTED DIGI CAMO

**Reduces chance  
of dye migration**

## DIGI CAMO WICKING T-SHIRT

**1798**

**1799**



100% polyester wicking printed knit • Roller printed to reduce chance of dye migration • Pad print label • Self-fabric collar • Set-in sleeves.

**1798**

Adult: S-4XL

List Price 14.30 (Upcharge for 2XL-4XL)

**1799**

Youth: S-L

List Price 13.90



BLACK DIGI



WHITE DIGI



RED DIGI



ROYAL DIGI



COLUMBIA  
BLUE DIGI



NAVY DIGI



ORANGE DIGI



MAROON DIGI



PURPLE DIGI



DARK GREEN  
DIGI



LIME DIGI



POWER  
YELLOW DIGI



POWER  
PINK DIGI



POWER  
BLUE DIGI



SAND DIGI



## ELEVATE WICKING T-SHIRT

**1795**

**1796**



100% polyester wicking printed knit • Pad print label • Self-fabric collar • Set-in sleeves.

**1795**

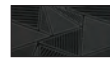
Adult: S-3XL

List Price 13.90 (Upcharge for 2XL-3XL)

**1796**

Youth: S-L

List Price 11.90



BLACK WHITE  
PRINT



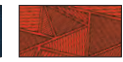
RED BLACK PRINT



ROYAL BLACK  
PRINT



NAVY WHITE  
PRINT



ORANGE BLACK  
PRINT



LIME BLACK  
PRINT



GRAPHITE BLACK  
PRINT



POWER YELLOW  
BLACK PRINT



POWER BLUE  
BLACK PRINT



## SLEET WICKING TEE

1801 1802



100% polyester wicking printed knit • Roller printed to reduce chance of dye migration • Pad print label • Self-fabric collar • Set-in sleeves.

1801  
1802

Adult: S-3XL  
Youth: S-L

List Price 14.50 (Upcharge for 2XL-3XL)  
List Price 12.50



BLACK/  
SILVER



BLACK/  
LIME



BLACK/  
POWER  
YELLOW



BLACK/  
POWER  
BLUE



BLACK/  
POWER  
ORANGE



WHITE/  
BLACK



RED/  
BLACK



ROYAL/  
BLACK



NAVY/  
SILVER



SILVER/  
BLACK



## MOD CAMO WICKING TEE

1805 1806



100% polyester wicking printed knit • Roller printed to reduce chance of dye migration • Pad print label • Self-fabric collar • Set-in sleeves.

1805  
1806

Adult: S-3XL  
Youth: S-L

List Price 14.50 (Upcharge for 2XL-3XL)  
List Price 13.90



BLACK  
MOD



RED  
MOD



RED  
ROYAL  
MOD



RED  
NAVY  
MOD



ROYAL  
MOD



NAVY  
MOD



ORANGE  
MOD



MAROON  
MOD



GOLD  
MOD



PURPLE  
MOD



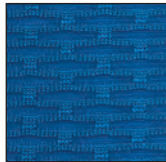
DARK  
GREEN  
MOD



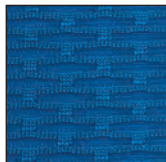
LIME  
MOD



POWER  
PINK  
MOD



MAZE MESH BACK



MAZE MESH BACK

## ASTONISH JERSEY

2515



84% polyester/16% spandex knit • 94% polyester/6% spandex maze mesh back panel • Odor resistant • Wicks moisture

• Heat sealed label • Self-fabric collar • Contrast color shoulder and upper back insert • Set-in sleeves • Flatlock stitching.

2515

Adult: XS-2XL

List Price 25.90 (Upcharge for 2XL)



BLACK/  
GRAPHITE



RED/  
GRAPHITE



ROYAL/  
GRAPHITE



NAVY/  
GRAPHITE



PURPLE/  
GRAPHITE



SILVER/  
GRAPHITE



LIME/  
GRAPHITE



POWER  
YELLOW/  
GRAPHITE



POWER  
BLUE/  
GRAPHITE



POWER  
ORANGE/  
GRAPHITE

# ASTONISH JERSEYS

**4-way stretch fabrics  
allow for greater mobility  
and maintains shape**

## ASTONISH SLEEVELESS JERSEY

2524



84% polyester/16% spandex knit • 94% polyester/6% spandex maze mesh back panel • Odor resistant • Wicks moisture

• Heat sealed label • Self-fabric collar • Contrast color shoulder and upper back insert • Flatlock stitching.

2524

Adult: XS-2XL

List Price 21.90 (Upcharge for 2XL)



BLACK/  
GRAPHITE



RED/  
GRAPHITE



ROYAL/  
GRAPHITE



NAVY/  
GRAPHITE



PURPLE/  
GRAPHITE



SILVER/  
GRAPHITE



LIME/  
GRAPHITE



POWER  
YELLOW/  
GRAPHITE



POWER  
BLUE/  
GRAPHITE



POWER  
ORANGE/  
GRAPHITE



9-INCH



SIDE SEAM POCKETS

## OBLIQUE JERSEY

2500



100% polyester propelit micromesh wicking knit body • 92% polyester/8% spandex wicking pinhole mesh side panel • 100% polyester wicking knit stripes • Pad print label • Self-fabric collar • Set-in sleeves.

2500

Adult: S-2XL

List Price 20.50 (Upcharge for 2XL)



BLACK/  
SLATE/  
WHITE



WHITE/  
SLATE/  
WHITE



RED/  
SLATE/  
WHITE



ROYAL/  
SLATE/  
WHITE



NAVY/  
SLATE/  
WHITE



MAROON/  
SLATE/  
WHITE



PURPLE/  
SLATE/  
WHITE



DARK  
GREEN/  
SLATE/  
WHITE



LIME/  
SLATE/  
WHITE



SLATE/  
SLATE/  
WHITE



GRAPHITE/  
SLATE/  
WHITE



POWER  
YELLOW/  
SLATE/  
WHITE



POWER  
BLUE/  
SLATE/  
WHITE



POWER  
ORANGE/  
SLATE/  
WHITE

## OBLIQUE SLEEVELESS JERSEY

2504



100% polyester propelit micromesh wicking knit body • 92% polyester/8% spandex wicking pinhole mesh side and shoulder inserts • 100% polyester wicking knit stripes • Pad print label • Self-fabric collar and armhole band.

2504

Adult: S-2XL

List Price 18.50 (Upcharge for 2XL)



WHITE/  
SLATE/  
WHITE



RED/  
SLATE/  
WHITE



ROYAL/  
SLATE/  
WHITE



LIME/  
SLATE/  
WHITE



SLATE/  
SLATE/  
WHITE



GRAPHITE/  
SLATE/  
WHITE



POWER  
YELLOW/  
SLATE/  
WHITE



POWER  
BLUE/  
SLATE/  
WHITE



POWER  
ORANGE/  
SLATE/  
WHITE

## OBLIQUE LONG SLEEVE JERSEY

2506



100% polyester propelit micromesh wicking knit body • 92% polyester/8% spandex wicking pinhole mesh collar, shoulder, underarm, and side inserts • 100% polyester wicking knit shoulder stripe • Pad print label • Contrast color pinhole mesh V-neck • Contrast color wicking pinhole mesh shoulder, underarm, and side provide ventilation and 4-way stretch.

2506

Adult: S-3XL

List Price 25.90 (Upcharge for 2XL-3XL)



RED/  
SLATE/  
WHITE



ROYAL/  
SLATE/  
WHITE



LIME/  
SLATE/  
WHITE



SLATE/  
SLATE/  
WHITE



GRAPHITE/  
SLATE/  
WHITE



POWER  
YELLOW/  
SLATE/  
WHITE



POWER  
BLUE/  
SLATE/  
WHITE



POWER  
ORANGE/  
SLATE/  
WHITE

## OBLIQUE SHORT

2508



100% polyester propelit micromesh wicking knit body • 100% polyester wicking knit side stripes • Pad print label • Covered elastic waistband at front • Contrast color side panel • Side seam pockets • Exposed elastic waistband at back with jacquard pattern • 9-inch inseam.

2508

Adult: S-2XL

List Price 21.90 (Upcharge for 2XL)



GRAPHITE/  
SLATE/  
WHITE



SLATE/  
LIME/  
WHITE



SLATE/  
SLATE/  
WHITE



SLATE/  
POWER  
YELLOW/  
WHITE



SLATE/  
POWER  
BLUE/  
WHITE



SLATE/  
POWER  
ORANGE/  
WHITE

**9-INCH**  
(YOUTH  
INSEAM  
GRADED)



**802**

**9-INCH**  
(YOUTH  
INSEAM  
GRADED)  
**PRO CUT**



**805**

**7-INCH**  
(YOUTH  
INSEAM  
GRADED)  
**PRO CUT**



**738**

**9-INCH**  
(YOUTH  
INSEAM  
GRADED)



**733**

**7-INCH**  
(YOUTH  
INSEAM  
GRADED)



## SLEET TRAINING SHORT

**1430**

**1431**



100% polyester wicking knit with printed Sleet side inserts  
• Roller printed inserts to reduce chance of dye migration  
• Pad print label • Covered elastic waistband with inside

drawcord • 9-inch inseam • Youth inseam graded.

**1430**

Adult: S-3XL

List Price 15.90 (Upcharge for 2XL-3XL)

**1431**

Youth: S-L

List Price 13.90



BLACK/  
WHITE



BLACK/  
RED



BLACK/  
ROYAL



BLACK/  
SILVER



SILVER/  
NAVY



SILVER/  
BLACK



LIME/  
BLACK



POWER  
YELLOW/  
BLACK



POWER  
BLUE/  
BLACK



POWER  
ORANGE/  
BLACK

## WICKING MESH ATHLETIC SHORT

**802**

**809**

**805**

**806**



100% polyester wicking mesh • Full-cut  
• Covered elastic waistband with inside  
drawcord • 9-inch inseam on 802/809  
• 7-inch inseam on 805/806 • Youth inseam graded.

**802**

Adult: S-4XL

List Price 11.90 (Upcharge for 2XL-4XL)

**809**

Youth: S-L

List Price 10.90

**805**

Adult: S-3XL

List Price 11.40 (Upcharge for 2XL-3XL)

**806**

Youth: S-L

List Price 10.40



BLACK



RED



ROYAL



NAVY



MAROON



DARK  
GREEN



SILVER  
GREY

## MINI MESH LEAGUE SHORT

**738**

**739**

**733**

**734**



Two layers of 100% polyester mini mesh • Elastic waistband with  
inside drawcord • 9-inch inseam on 738/739 • 7-inch inseam on  
733/734 • Youth inseam graded.

**738**

Adult: S-3XL

List Price 13.50 (Upcharge for 2XL-3XL)

**739**

Youth: S-L

List Price 12.20

**733**

Adult: S-3XL

List Price 13.00 (Upcharge for 2XL-3XL)

**734**

Youth: XS-L

List Price 12.20



BLACK



RED



ROYAL



COLUMBIA  
BLUE



NAVY



ORANGE



MAROON



GOLD



PURPLE



KELLY



DARK  
GREEN



VEGAS  
GOLD

1420



1425



9-INCH  
(YOUTH  
INSEAM  
GRADED)  
PRO CUT

VALUE PRICE

7-INCH  
(YOUTH  
INSEAM  
GRADED)  
PRO CUT

## TRAINING SHORT & OCTANE SHORT

1420

1421

1425

1426



100% polyester wicking knit • Full-cut • Heat sealed label • Covered elastic waistband with inside drawcord • 7-inch inseam on 1425/1426

• 9-inch inseam on 1420/1421 • Youth inseam graded.

1420

Adult: S-3XL

Call for pricing

1421

Youth: S-L

Call for pricing

1425

Adult: S-3XL

Call for pricing

1426

Youth: XS-L

Call for pricing



BLACK



RED



ROYAL

COLUMBIA  
BLUE

NAVY



ORANGE



MAROON



GOLD



PURPLE



KELLY

DARK  
GREENSILVER  
GREY

GRAPHITE

848



842



9-INCH  
(YOUTH  
INSEAM  
GRADED)  
PRO CUT

7-INCH  
(YOUTH  
INSEAM  
GRADED)

## TRICOT MESH SHORT/TRICOT LINED

848

849

842

843



Outer layer of 100% polyester tricot mesh • Inner layer of 100% polyester tricot lining • Full-cut on 848/849 only • Elastic waistband with inside drawcord • 9-inch inseam on 848/849 • 7-inch inseam on 842/843 • Youth inseam graded.

848

Adult: S-5XL

List Price 13.00 (Upcharge for 2XL-5XL)

849

Youth: S-L

List Price 11.90

842

Adult: S-5XL

List Price 11.00 (Upcharge for 2XL-5XL)

843

Youth: S-L

List Price 9.90



BLACK



RED



ROYAL



NAVY



ORANGE



MAROON



GOLD



PURPLE



KELLY

DARK  
GREENSILVER  
GREY

9-INCH  
(YOUTH  
INSEAM  
GRADED)



## LONGER LENGTH JERSEY SHORT

915

916



Heavyweight 50% polyester/50% cotton jersey knit • Covered elastic waistband with inside drawcord • 9-inch inseam • Youth inseam graded.

915

Adult: S-3XL

List Price 14.50 (Upcharge for 2XL-3XL)

916

Youth: S-L

List Price 11.90



BLACK



RED



ROYAL



NAVY



MAROON

DARK  
GREENATHLETIC  
HEATHER

ASH



## COLOR BLOCK CREW SOCK

6093

6092

6091

6090



55% polyester/22% nylon/20% cotton/3% spandex wicking yarn • Calf length • Heel/toe construction • Contrast color stripe on back • Extra cushioning and support in areas of the foot and ankle that are susceptible to rubbing, impact or injury • Left and right sock construction for a better fit • Arch compression reduces fatigue and aids circulation.

6093 Adult XL: 13-15

Call for pricing

6092 Adult: 10-13

Call for pricing

6091 Intermediate: 9-11

Call for pricing

6090 Youth: 7-9

Call for pricing



## ELITE MULTI-SPORT SOCK

6007

6006

6005



75% acrylic/15% polyester/4% spandex/4% elastic/2% nylon • Wicks moisture • Knee length • Heel/toe construction • Arch and ankle support • Lightweight microfiber yarns offer support while remaining soft to the touch.

6007 Adult: 10-13

Call for pricing

6006 Intermediate: 9-11

Call for pricing

6005 Youth: 7-9

Call for pricing



## ATHLETIC SOCKS

6028

6026

6027

80% acrylic/14% nylon/6% elastic • Knee-length tube sock • Fully cushioned foot.

6028 Adult: 10-13

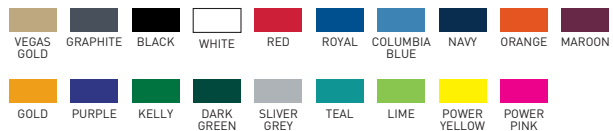
Call for pricing

6026 Intermediate: 9-11

Call for pricing

6027 Youth: 7-9

Call for pricing



# WEAR YOUR TEAM NUMBER

**Ideally used for  
basketball, lacrosse,  
football or volleyball**

## ROSTER SOCK

**6097 / 6096**



82% nylon/9% polyester/4% spandex/5% elastic wicking yarn

- Calf length • Heel/toe construction • Contrast back insert features lightning bolts down the side • Breathable mesh at top of foot • Extra cushioning and support in areas of the foot and ankle that are susceptible to rubbing, impact or injury • Arch compression reduces fatigue and aids circulation • Ideally used for Basketball, Lacrosse, Football, or Volleyball.

• **Sock sold individually, not as a pair.**

**6097**

Adult: 10-13

Call for pricing

**6096**

Intermediate: 9-11

Call for pricing

BLACK/  
GRAPHITE/  
WHITE



ROSTER SOCK



\*Socks are sold as separates





## WICKING ATHLETIC SOCKS

**6085**
**6086**
**6087**


70% lucool wicking polyester/13% nylon/12% elastic/5% spandex  
• Knee-length tube sock • Cushioned toe, sole and heel.

**6085**

Adult: 10-13

Call for pricing

**6086**

Intermediate: 9-11

Call for pricing

**6087**

Youth: 7-9

Call for pricing



BLACK



WHITE



RED



ROYAL



NAVY



ORANGE



MAROON



GOLD



PURPLE



KELLY



DARK GREEN



## GAME SOCKS

**6025**
**6020**
**6021**

91% nylon/5% polyester/4% elastic • Tube sock • Slightly below the knee.

**6025**

Adult: 10-13

Call for pricing

**6020**

Intermediate: 9-11

Call for pricing

**6021**

Youth: 7-9

Call for pricing



BLACK



RED



ROYAL



NAVY



ORANGE



MAROON



GOLD



PURPLE



KELLY



DARK GREEN



TEAL

## EQUIPMENT BAGS

**1780**
**1785**

600-denier polyester with PVC coating • Zippered main compartment has large U-shaped opening with heavy zipper and two zipper pulls • Zippered front pocket removes for easy embellishment  
• Black web handles with self-fabric handle wrapper, reinforced at stress points • Piping trim  
• Durable vinyl on bottom of bag.

**1780**

Large: 39"W x 19"H x 15"D

Call for pricing

**1785**

Medium: 35"W x 17"H x 15"D

Call for pricing



BLACK


**1780**

 REMOVABLE  
POCKET

**1785**

 REMOVABLE  
POCKET



## DIGI CAMO SLEEVE

2612

2613



84% polyester/16% spandex knit  
• Roller printed to reduce chance of dye migration • Odor-resistant

• Wicks moisture • Ultra tight fit • Flatlock stitching • Top hem with elastic to secure in place.

2612

Adult: S/M-L/XL

Call for pricing

2613

Youth

Call for pricing



WHITE  
DIGI

# GET THE LOOK

The new Digi Camo and Solid sleeves wick moisture & offer that too-cool team look



## SOLID SLEEVE

2610

2611



84% polyester/16% spandex knit  
• Odor-resistant • Wicks moisture  
• Ultra tight fit • Flatlock stitching

• Top hem with elastic to secure in place.

2610

Adult: S/M-L/XL

Call for pricing

2611

Youth

Call for pricing



BLACK

WHITE

RED

ROYAL

NAVY

GRAPHITE