



2017 CORPORATE

5402



BACK

TORCE SPORT SHIRT

5402



100% polyester wicking knit • Heat sealed label • Self-fabric collar • Graphite heather body with contrast inserts at shoulder • Raglan sleeves • Box-stitched placket • Three matching

buttons with cross-stitching.

5402

Adult: S-3XL

List Price 19.90 (Upcharge for 2XL-3XL)

LADIES TORCE SPORT SHIRT

5403



Ladies' fit.

5403

Ladies: S-2XL

List Price 19.90 (Upcharge for 2XL)

GRAPHITE
HEATHER/
BLACKGRAPHITE
HEATHER/
REDGRAPHITE
HEATHER/
ROYALGRAPHITE
HEATHER/
COLUMBIA
BLUEGRAPHITE
HEATHER/
NAVYGRAPHITE
HEATHER/
ORANGEGRAPHITE
HEATHER/
MAROONGRAPHITE
HEATHER/
PURPLEGRAPHITE
HEATHER/
DARK GREENGRAPHITE
HEATHER/
LIME5403
LADIES
FITTHE RIGHT
FIT FOR ALL

Outfit your entire group
with Adult sizes up to 4XL
& Ladies sizes up to 3XL

5404



BACK

SCOUT SPORT SHIRT

5404



100% polyester wicking knit • Heat sealed label • Contrast color self-fabric collar • Contrast color raglan sleeves • Box-stitched placket • Three

matching buttons with cross-stitching

5404

Adult: S-4XL

List Price 19.90 (Upcharge for 2XL-4XL)

LADIES SCOUT SPORT SHIRT

5405



Ladies' fit • Princess seams.

5405

Ladies: XS-3XL

List Price 19.90 (Upcharge for 2XL-3XL)

BLACK/
REDBLACK/
SLATERED/
SLATEROYAL/
SLATECOLUMBIA
BLUE/
SLATENAVY/
SLATEORANGE/
SLATEMAROON/
SLATEPURPLE/
SLATEDARK
GREEN/
SLATELIME/
SLATE5405
LADIES
FIT



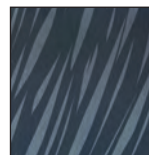
BACK

5406

BREAK OUT IN STYLE

Breaker Sport Shirt
features contrast color
sublimated Breaker print
on raglan sleeves

BREAKER PRINT



COORDINATING BREAKER JACKET
STYLE 3625 PG. 11

BREAKER SPORT SHIRT

5406



100% polyester wicking knit • 100% sublimated
polyester wicking knit sleeve • Heat sealed label
• Self-fabric collar • Contrast color sublimated Breaker
print on raglan sleeves • Box-stitched placket • Three matching buttons
with cross-stitching.

5406

Adult: S-3XL

List Price 21.90 (Upcharge for 2XL-3XL)



BLACK/
SLATE



RED/
SLATE



ROYAL/
SLATE



COLUMBIA
BLUE/
SLATE



NAVY/
SLATE



ORANGE/
SLATE



LIME/
SLATE



GRAPHITE
HEATHER/
SLATE

5091



BACK

5092
LADIES
FIT

AVAILABLE IN 15 COLORS

WINNING STREAK SPORT SHIRT

5091



100% polyester wicking closed hole mesh • 100% polyester pinhole micromesh shoulders and side panels • Heat sealed label • Self-fabric collar • Breathable pinhole mesh shoulders and side panels • Contrast color piping on shoulders, front and back • Set-in sleeves • Box-stitched placket • Three matching buttons with cross-stitching.

5091

Adult: S-4XL

List Price ~~Was 31.98~~ Now 24.98

(Upcharge for 2XL-4XL)

LADIES WINNING STREAK SPORT SHIRT

5092



Ladies' fit.

5092

Ladies: S-2XL

List Price ~~Was 31.98~~ Now 24.98

(Upcharge for 2XL)

BLACK/
WHITEWHITE/
BLACKWHITE/
REDWHITE/
ROYALWHITE/
NAVYRED/
WHITERED/
BLACKROYAL/
WHITEROYAL/
ORANGECOLUMBIA
BLUE/
WHITENAVY/
WHITENAVY/
ORANGEPURPLE/
GOLDDARK
GREEN/
WHITEGRAPHITE/
WHITE

AVAILABLE IN 22 COLORS

WINNING STREAK CREW

1090

1091



100% polyester wicking smooth knit • 92% polyester/8% spandex pinhole mesh back and inserts • Odor resistant • Heat sealed label • Self-fabric collar • Set-in sleeves • Contrast color piping on shoulders, front and back.

1090

Adult: S-3XL

List Price 23.90 (Upcharge for 2XL-3XL)

1091

Youth: S-L

List Price 21.90

LADIES WINNING STREAK JERSEY

1092

1093



Ladies' fit • Self-fabric V-neck collar.

1092

Ladies: S-2XL

List Price 23.90 (Upcharge for 2XL)

1093

Girls: S-L

List Price 21.90

*Available in Ladies only.

BLACK/
WHITEBLACK/
GOLDWHITE/
BLACKWHITE/
REDWHITE/
ROYALWHITE/
NAVYRED/
BLACKRED/
WHITEROYAL/
WHITEROYAL/
ORANGEROYAL/
GOLDCOLUMBIA
BLUE/
WHITENAVY/
WHITENAVY/
ORANGENAVY/
GOLDORANGE/
WHITEMAROON/
WHITEPURPLE/
WHITEPURPLE/
GOLDDARK
GREEN/
WHITEGRAPHITE/
WHITEPOWER
PINK/
WHITE*



PREMIER COLLECTION

Coordinating jackets on pg. 14

AVAILABLE IN 17 COLORS

PREMIER SPORT SHIRT

5012



100% polyester wicking closed hole mesh • 100% polyester pinhole micromesh inserts • Heat sealed label • Self-fabric collar • Breathable contrast color pinhole mesh neck tape, top placket facing (color bodies) shoulder and front inserts • Set-in sleeves • Box-stitched placket • Three matching buttons.

5012 Adult: S-4XL List Price ~~Was 31.90~~ Now 23.90
(Upcharge for 2XL-4XL)

LADIES PREMIER SPORT SHIRT

5013



Ladies' fit.

5013 Ladies: S-2XL List Price ~~Was 31.90~~ Now 23.90
(Upcharge for 2XL)



AVAILABLE IN 15 COLORS

PREMIER JERSEY

1050

1051

1055

1056



100% polyester wicking smooth knit • 92% polyester/8% spandex pinhole mesh inserts • Odor resistant • Ladies' fit on style 1055 • Heat sealed label • Self-fabric collar • V-neck collar on Ladies' • Set-in sleeves • Breathable contrast color pinhole mesh shoulder and front inserts.

1050 Adult: S-3XL List Price 21.00 (Upcharge for 2XL-3XL)
1051 Youth: S-L List Price 18.50
1055 Ladies: S-2XL List Price 21.00 (Upcharge for 2XL)
1056 Girls: S-L List Price 18.50

*Power Pink/White & White/Power Pink only available in Ladies.
*Graphite/White only available in Adult.



5095



NEW
LOWER
PRICE

5097
LADIES
FIT

WICKING MESH SPORT SHIRT

5095

5097



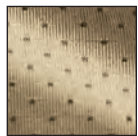
100% polyester wicking closed hole mesh • Ladies' fit on style 5097 • Heat sealed label • Matching rib-knit collar • Set-in sleeves • Three matching buttons.

5095 Adult: S-3XL

List Price ~~Was 25.98~~ Now 19.90
(Upcharge for 2XL-3XL)

5097 Ladies: S-3XL

List Price ~~Was 25.98~~ Now 19.90
(Upcharge for 2XL-3XL)



PINHOLE
MICROMESH



BACK



NEW
LOWER
PRICE

SMOOTH
KNIT

AVAILABLE IN 14 COLORS

PLAYOFF SPORT SHIRT

5025



94% polyester/6% spandex knit with wicking smooth knit finish • 100% polyester pinhole micromesh inserts

• Odor resistant • Wicks moisture • Heat sealed label • Self-fabric collar • Breathable contrast color pinhole micromesh front and back shoulder inserts • Set-in sleeves • Three matching buttons.

5025 Adult: S-4XL

List Price ~~Was 29.98~~ Now 25.90
(Upcharge for 2XL-4XL)



5005



INTERLOCK
DOT-TEXTURED
FABRIC

NEW
LOWER
PRICE

5006
LADIES
FIT

WICKING INTERLOCK DOT-TEXTURED FABRIC DESIGN

AVAILABLE IN 18 COLORS

MISSION SPORT SHIRT

5005



100% polyester wicking textured knit • Heat sealed label
• Self-fabric collar • Raglan sleeves • Contrast color inserts
on front • Box-stitched placket • Three matching buttons
with cross-stitching.

5005 Adult: S-4XL List Price ~~Was 23.90~~ Now 19.90
(Upcharge for 2XL-4XL)

LADIES MISSION SPORT SHIRT

5006



Ladies' fit.

5006 Ladies: S-2XL List Price ~~Was 23.90~~ Now 19.90
(Upcharge for 2XL)



5001



INTERLOCK
DOT-TEXTURED
FABRIC

NEW
LOWER
PRICE

5002
LADIES
FIT

VISION SPORT SHIRT

5001



100% polyester wicking textured knit • Wicks moisture
• Heat sealed label • Self-fabric collar • Topstitched armholes
and forward shoulder seams • Set-in sleeves • Box-stitched
placket • Three matching buttons with cross-stitching.

5001 Adult: S-4XL List Price ~~Was 21.90~~ Now 15.90
(Upcharge for 2XL-4XL)

LADIES VISION SPORT SHIRT

5002



Ladies' fit.

5002 Ladies: S-2XL List Price ~~Was 21.90~~ Now 15.90
(Upcharge for 2XL)

*Available in Adult sizes only





5047

BACK

5048
LADIES
FIT

WICKING, SNAG RESISTANT FABRIC AVAILABLE IN ADULT & LADIES' SIZES



100% polyester snag
resistant fabric for
increased durability
with moisture
management to
wick sweat

SNAG RESISTANT
FABRIC

GENESIS SPORT SHIRT

5047

5048



100% polyester wicking snag resistant knit • Ladies' fit on style 5048 • Heat sealed label • Self-fabric collar with contrasting color neck tape • Two-color shoulder inserts • Topstitched armholes • Set-in sleeves • Box-stitched placket • Three matching buttons with cross-stitching.

5047 Adult: S-4XL List Price ~~Was 33.90~~ Now 25.90
(Upcharge for 2XL-4XL)

5048 Ladies: S-2XL List Price ~~Was 33.90~~ Now 25.90
(Upcharge for 2XL)



PROPELIT
MICROMESH

OBLIQUE SPORT SHIRT

5026



100% polyester wicking pointelle mesh body and side panel • 100% polyester pinhole mesh stripes • Slate accented side panels, collar and bottom placket • Heat transfer label • Raglan sleeves • Four matching buttons with cross-stitching.

5026 Adult: S-3XL List Price ~~Was 29.90~~ Now 25.90
(Upcharge for 2XL-3XL)

LADIES OBLIQUE SPORT SHIRT

5027



Ladies' fit.

5027 Ladies: S-2XL List Price ~~Was 29.90~~ Now 25.90
(Upcharge for 2XL)

*Power Pink/Slate/White available in Ladies S-XL only

*Red/Slate/White, Power Blue/Slate/White available in Adult only



RIVAL SPORT SHIRT

5023



100% polyester wicking pointelle mesh • Contrast inserts at chest with contrast piping • Heat sealed label • Rib-knit collar • Raglan sleeves • Box-stitched placket • Three matching buttons with cross-stitching.

5023 Adult: S-4XL List Price ~~Was 29.90~~ Now 25.90
(Upcharge for 2XL-4XL)

LADIES RIVAL SPORT SHIRT

5024



Ladies' fit.

5024 Ladies: S-2XL List Price ~~Was 29.90~~ Now 25.90
(Upcharge for 2XL)



MAKE IT MESH

Pointelle mesh fabric wicks away moisture for Adults and Ladies



POINTELLE MESH



BACK



5023

5024



3620



REFLECTIVE TAPE



LADIES DROPPED TAIL



HIDDEN POSSESSION
POCKET



3622
LADIES
FIT

RECORD SETTER PULLOVER

3620

100% polyester knit interlock • Heat sealed label • Contrast color front panel • Pullover style with quarter zip and reflective tape • Zipper garage with storm flap • Raglan sleeves • Contrasting spandex bound cuff • Wearer's right side seam hidden possession pocket • Open bottom.

3620 Adult: XS-3XL List Price 33.90 (Upcharge for 2XL-3XL)



LADIES RECORD SETTER PULLOVER

3622

100% polyester knit interlock • Heat sealed label • Ladies' fit • Slim fit through torso that skims the body • Contrast color front panel • Pullover style with quarter zip and reflective tape • Zipper garage with storm flap • Raglan sleeves • Contrasting spandex bound cuff • Wearer's right side seam hidden possession pocket • Dropped tail.

3622 Ladies: XS-2XL List Price 33.90 (Upcharge for 2XL)





**COORDINATING SPORT
SHIRT 5406 PG. 3**

BREAKER JACKET

3625

3627

100% polyester sublimated micropoly upper body featuring Breaker print
 • 100% polyester knit interlock lower body • Hybrid design with micropoly on shoulders, collar, and sleeve for rain and wind resistance combined with knit lower body for warmth • Heat sealed label • Ladies' fit on style 3627 • Extended zipper garage with storm flap • Cadet collar • Set-in sleeves • Two angled welt pockets • Spandex bound cuff • Open Bottom.

3625 Adult: XS-2XL List Price 45.90 (Upcharge for 2XL)

3627 Ladies: XS-2XL List Price 45.90 (Upcharge for 2XL)



BLACK/
SLATE



RED/
SLATE



ROYAL/
SLATE

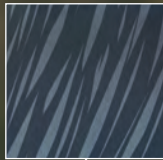


NAVY/
SLATE



GRAPHITE
HEATHER/
SLATE

BREAKER PRINT



3625

3627



BACK



4-WAY STRETCH
WOVEN FABRIC

QUANTUM JACKET

3780

3782



90% polyester/10% spandex 4-way stretch woven fabric • 4-way stretch property provides ease of movement

• Ladies' fit on style 3782 • Front zipper • Contrast piping and sleeve inserts • Raglan sleeves • Front pockets • Half elastic cuffs • Open bottom.

3780 Adult: XS-3XL List Price 46.60
(Upcharge for 2XL-3XL)

3782 Ladies: XS-2XL List Price 46.60
(Upcharge for 2XL)



DOPPLER PULLOVER

3792

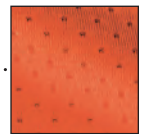
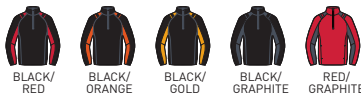


90% polyester/10% spandex 4-way stretch woven fabric

• 100% polyester pinhole mesh

inserts • 4-way stretch property provides ease of movement • Half-zip pullover style • Contrasting color shoulder insert and bottom of sleeve • Contrast mesh shoulder stripe and underarm insert • Mesh underarm provides ventilation • Raglan sleeves • Front pockets with contrasting color mesh pocket bag • Half elastic cuffs • Open bottom with adjustable elastic drawcord hidden in pocket.

3792 Adult: S-2XL List Price 43.90
(Upcharge for 2XL)



PINHOLE MESH
INSERTS

STRETCH FABRIC

Soft, quiet and comfortable

QUANTUM SHORT SLEEVE PULLOVER

3788

3789



90% polyester/10% spandex 4-way stretch woven fabric

- 4-way stretch property provides ease of movement
- Half-zip pullover style • Contrast piping and sleeve insert

• Raglan sleeves • Front pockets • Open bottom with adjustable elastic drawcord hidden in pocket.

3788 Adult: XS-4XL List Price 42.80 (Upcharge for 2XL-4XL)

3789 Youth: S-L List Price 40.70

*Available in Adult Sizes only.



To see our full Outerwear offering, visit us online at augustasportswear.com

LADIES QUANTUM PULLOVER

3790



90% polyester/10% spandex 4-way stretch woven fabric

• 100% polyester pinhole mesh insert • Ladies' fit • 4-way stretch property provides ease of movement • Half-zip pullover • Contrast mesh insert, piping, sleeve stripe, and hem facing • Dropped tail • Set-in sleeves • Front pockets • Half elastic cuffs • Open bottom.

3790 Ladies: XS-2XL List Price 42.80 (Upcharge for 2XL)



OPEN BOTTOM WITH ADJUSTABLE ELASTIC DRAWCORD HIDDEN IN POCKET

3788



OUTERWEAR

3790





3700



**Coordinating Sport Shirts
& Jerseys pg. 5**



**3710
LADIES
FIT**

PREMIER JACKET

3700

3710



Outer shell of 100% polyester diamond tech • Lined with 100% polyester taffeta • Ladies' fit on style 3710
• Front zipper • Contrast color shoulder and front inserts • Set-in sleeves • Front pockets • Elastic cuffs
• Open bottom.

3700

Adult: XS-3XL

List Price 41.90 (Upcharge for 2XL-3XL)

3710

Ladies: XS-2XL

List Price 41.90 (Upcharge for 2XL)



BLACK/
WHITE



BLACK/
RED



BLACK/
ORANGE



BLACK/
GOLD



RED/
WHITE



ROYAL/
WHITE



ROYAL/
GOLD



NAVY/
WHITE

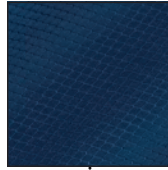


NAVY/
GOLD



MAROON/
WHITE

DIAMOND TECH



DRIVE PULLOVER

3720



Outer shell of 100% polyester diamond tech • Lined with 100% polyester taffeta • Half-zip pullover style • Contrast color front and sleeve inserts • Set-in sleeves • Front pockets • Half-elastic cuffs • Open bottom.

3720

Adult: XS-3XL

List Price 41.90 (Upcharge for 2XL-3XL)



BLACK/
GRAPHITE/
WHITE



RED/
GRAPHITE/
WHITE



ROYAL/
GRAPHITE/
WHITE



NAVY/
GRAPHITE/
WHITE



MAROON/
GRAPHITE/
WHITE



PURPLE/
GRAPHITE/
WHITE

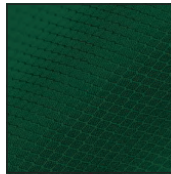


DARK
GREEN/
GRAPHITE/
WHITE



GRAPHITE/
BLACK/
WHITE

DIAMOND TECH



ROAR PULLOVER

Available in 16 colors

ROAR PULLOVER

3745

3746



Outer shell of 100% polyester diamond tech • Lined with 100% polyester taffeta • Rib knit V-neck collar • Contrast color shoulder and side inserts with contrast piping • Set-in sleeves • Front pockets • Elastic cuffs • Open bottom with elastic drawcord adjustable through pocket.

3745

Adult: S-4XL

List Price 38.50 (Upcharge for 2XL-4XL)

3746

Youth: S-L

List Price 36.50



BLACK/
RED/
WHITE



BLACK/
ORANGE/
WHITE



BLACK/
GOLD/
WHITE



BLACK/
GRAPHITE/
WHITE



RED/
BLACK/
WHITE



ROYAL/
RED/
WHITE



ROYAL/
GOLD/
WHITE



NAVY/
RED/
WHITE



NAVY/
ORANGE/
WHITE



NAVY/
GRAPHITE/
WHITE



MAROON/
GRAPHITE/
WHITE



PURPLE/
GOLD/
WHITE



DARK
GREEN/
GRAPHITE/
WHITE



GRAPHITE/
NAVY/
WHITE



GRAPHITE/
RED/
WHITE



GRAPHITE/
BLACK/
WHITE

3730



BACK



3732
LADIES
FIT

STYLE & FUNCTION

**Diamond Tech fabric is
water-resistant and
ultra-soft to the touch**

FURY JACKET

3730 3732



Outer shell of 100% polyester diamond tech • Lined with 100% polyester taffeta • Ladies' fit on style 3732 • Center front zipper
• Contrast color sleeve and front inserts with contrast piping
• Raglan sleeves • Front pockets • Half elastic cuffs • Open bottom.

3730 Adult: XS-3XL List Price 41.90 (Upcharge for 2XL-3XL)
3732 Ladies: XS-2XL List Price 41.90 (Upcharge for 2XL)



BLACK/
ORANGE/
WHITE



BLACK/
GOLD/
WHITE



BLACK/
GRAPHITE/
WHITE



RED/
BLACK/
WHITE



ROYAL/
GRAPHITE/
WHITE



NAVY/
GRAPHITE/
WHITE



DARK
GREEN/
GRAPHITE/
WHITE



RED/
GRAPHITE/
WHITE

MATTE MICRO POLYESTER

3500



3502
LADIES
FIT

OUTERWEAR

AVAIL JACKET

3500

3501

3502



Outer shell of 100% matte micro polyester • Lined with 100% polyester taffeta • Ladies' fit on style 3502 • Front zipper
• Contrast color inserts at chest and on sleeve • Set-in sleeves • Two angled welt pockets • Half elastic cuffs • Open bottom.

3500	Adult: S-2XL	List Price 35.90 (Upcharge for 2XL)
3501	Youth: S-L	List Price 33.90
3502	Ladies: XS-2XL	List Price 35.90 (Upcharge for 2XL)



BLACK/
WHITE



BLACK/
RED



BLACK/
GOLD



RED/
WHITE



ROYAL/
WHITE



ROYAL/
GOLD



NAVY/
WHITE



NAVY/
GOLD



MAROON/
WHITE



PURPLE/
WHITE



DARK
GREEN/
WHITE



GRAPHITE/
WHITE



RAIN OR SHINE

Look & feel great in
water resistant matte
micro polyester

AVAIL PULLOVER

3510



Outer shell of 100% matte micro polyester • Lined with 100% polyester taffeta • Half-zip pullover style • Angled front yoke • Drawcord in hood on Adult sizes S-4XL only • Two side seam pockets • Raglan sleeves • Half elastic cuffs • Open bottom with elastic at side seams.

3510 Adult: XS-4XL List Price 33.90 (Upcharge for 2XL-4XL)

***Not available in 3XL-4XL.**



CORPORATE STYLE

The Promentum Pullover fits adults up to size 4XL to dress out employees for branded identity

PROMENTUM PULLOVER

3417

3418



Outer shell of 100% matte micro polyester • Lined with 100% polyester taffeta • Rib knit V-neck collar • Contrast color inserts at front and back raglan • Raglan sleeves • Two side seam pockets • Half elastic cuffs • Open bottom with elastic at side seam.

3417

Adult: S-4XL

List Price 31.90 (Upcharge for 2XL-4XL)

3418

Youth: M-L

List Price 29.90



BLACK/
WHITE



BLACK/
GOLD



RED/
BLACK



RED/
WHITE



ROYAL/
WHITE



NAVY/
WHITE



NAVY/
RED



NAVY/
GOLD



ORANGE/
WHITE



PURPLE/
WHITE



DARK
GREEN/
WHITE



GRAPHITE/
WHITE



SAME-DAY SHIPPING

If you place your order by 5pm EST, it ships the same day!



BACK



3417

OUTERWEAR



NYLON COACH'S JACKET/LINED

3100
3101


Outer shell of 100% nylon taffeta • Lined with 100% polyester brushed tricot • Snap front • Raglan sleeves • Reinforced slash front pockets • Elastic cuffs • Open bottom.

3100
Adult: S-5XL*
List Price 22.50 (Upcharge for 2XL-5XL)
3101
Youth: XS-L
List Price 22.40

4XL and 5XL available in black, navy, red and royal.

***Available in Adult only.**

BLACK	WHITE*	RED	ROYAL	COLUMBIA BLUE*	NAVY	ORANGE*
MAROON	GOLD*	PURPLE*	KELLY*	DARK GREEN	LIGHT PINK*	BROWN*



PULLOVER JACKET IN A POCKET

3130


Outer shell of 100% nylon taffeta • Half-zip pullover style • Jacket folds up into zippered front pocket concealed under flap • Set-in sleeves • Elastic cuffs • Open bottom.

3130
Adult: S-3XL
List Price 24.10 (Upcharge for 2XL-3XL)

BLACK	RED	ROYAL	NAVY



HOODED TAFFETA JACKET/FLEECE LINED

3280
3281


Outer shell of 100% nylon taffeta • Body, sleeves and hood lined with 75% polyester/13% rayon/12% cotton grey heather fleece • Front zipper with inside storm flap • Hood with drawcord and sliders (Youth has elastic in hood instead of drawcord) • Set-in sleeves • Reinforced slash front pockets with zippers • Elastic cuffs and bottom band.

3280
Adult: S-4XL
List Price 47.70 (Upcharge for 2XL-4XL)
3281
Youth: XS-L
List Price 41.90

BLACK	RED	ROYAL	NAVY	MAROON	PURPLE	KELLY	DARK GREEN



WATER-RESISTANT

**Dry, warm and comfortable
with breathable lining**

MICRO POLY WINDSHIRT/LINED

3415



Outer shell of 100% micro polyester • Lined with 100% polyester taffeta
• Rib-knit V-neck collar, cuffs and bottom band • Set-in sleeves • Side seam pockets.

3415 Adult: S-4XL List Price 27.90 (Upcharge for 2XL-4XL)



BLACK



RED



ROYAL



NAVY



CHILL FLEECE FULL-ZIP JACKET

3540

3541

100% polyester Chill Fleece • Pill-free • Front zipper • Set-in sleeves
• Front pockets • Elastic cuffs and bottom.

3540 Adult: S-3XL List Price 29.90 (Upcharge for 2XL-3XL)

3541 Youth: XS-L List Price 29.00



BLACK



RED



ROYAL



NAVY



MAROON



DARK GREEN



CHARCOAL HEATHER



CHILL FLEECE HALF-ZIP PULLOVER

3530

3531

100% polyester Chill Fleece • Pill-free • Half-zip pullover style • Set-in sleeves
• Front pockets • Elastic cuffs and bottom.

3530 Adult: S-3XL List Price 29.10 (Upcharge for 2XL-3XL)

3531 Youth: XS-L List Price 27.90



BLACK



RED



ROYAL



NAVY



MAROON



DARK GREEN



CHARCOAL HEATHER



GEAR BAG

511

420-denier nylon with PVC coating • Zippered main compartment has large U-shaped opening with two zipper pulls • Separate zippered compartments at each end • Black web handles with self-fabric handle wrapper, reinforced at stress points • Adjustable and detachable shoulder strap • Plastic hardware • Piping trim • Removable inside bottom board.

511 22"W x 11"H x 11"D Call for pricing

BLACK	RED	NAVY	MAROON	PURPLE	FOREST GREEN
BLACK/ORANGE	BLACK/LIME	BLACK/POWER YELLOW	BLACK/POWER PINK	BLACK/POWER BLUE	



2000

NYLON SPORT BAG

2000

210-denier nylon with PU coating • Zippered main compartment • Round ends • White web handles, reinforced at stress points • D-rings for optional shoulder strap.

2000 18"W x 10"H Call for pricing

BLACK	RED	ROYAL	COLUMBIA BLUE	NAVY	MAROON
GOLD	PURPLE	KELLY	DARK GREEN	LIGHT PINK	

D-RINGS FOR OPTIONAL
SHOULDER STRAP



1314

SHOULDER STRAP

1314

100% polypro webbing • Adjustable shoulder strap • Metal hardware.

1314 For Sport Bag 2000 Call for pricing

WHITE



LARGE TRI-COLOR SPORT BAG

1911

600-denier polyester with PVC coating • Zippered main compartment has large U-shaped opening with two zipper pulls • Side pocket • Inside zippered pocket • Black bottom with white accent piping • Black web handles, reinforced at stress points • Adjustable and detachable shoulder strap • Plastic hardware.

1911 24"W x 13"H x 10"D Call for pricing

BLACK/BLACK/WHITE	RED/BLACK/WHITE	ROYAL/BLACK/WHITE	COLUMBIA BLUE/BLACK/WHITE	NAVY/BLACK/WHITE	ORANGE/BLACK/WHITE	GOLD/BLACK/WHITE
PURPLE/BLACK/WHITE	KELLY/BLACK/WHITE	LIME/BLACK/WHITE	POWER YELLOW/BLACK/WHITE	POWER PINK/BLACK/WHITE	POWER BLUE/BLACK/WHITE	



TRI-COLOR SPORT BAG

1910

600-denier polyester with PVC coating • Zippered main compartment has large U-shaped opening with two zipper pulls • Large front pocket • Inside zippered pocket • Black bottom with white accent piping • Black web handles, reinforced at stress points • Adjustable and detachable shoulder strap • Plastic hardware.

1910 18"W x 10"H x 10"D Call for pricing

BLACK/BLACK/WHITE	RED/BLACK/WHITE	ROYAL/BLACK/WHITE	COLUMBIA BLUE/BLACK/WHITE	NAVY/BLACK/WHITE	ORANGE/BLACK/WHITE	GOLD/BLACK/WHITE
PURPLE/BLACK/WHITE	KELLY/BLACK/WHITE	LIME/BLACK/WHITE	POWER YELLOW/BLACK/WHITE	POWER PINK/BLACK/WHITE	POWER BLUE/BLACK/WHITE	



TRI-COLOR BACKPACK

1915

600-denier polyester with PVC coating • Zippered main compartment with zipper pull • Zippered front compartment • Inside zippered padded pocket with opening for earphones • Web handle at top of backpack • Padded back for support and comfort • Adjustable contoured padded shoulder straps • Black bottom with white accent piping • Bottom board attached to inside of backpack • Plastic hardware.

1915 12"W x 16½"H x 7"D Call for pricing

BLACK/BLACK/WHITE	RED/BLACK/WHITE	ROYAL/BLACK/WHITE	COLUMBIA BLUE/BLACK/WHITE	NAVY/BLACK/WHITE	ORANGE/BLACK/WHITE
GOLD/BLACK/WHITE	PURPLE/BLACK/WHITE	KELLY/BLACK/WHITE	LIME/BLACK/WHITE	POWER PINK/BLACK/WHITE	POWER BLUE/BLACK/WHITE



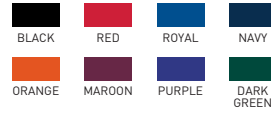
SPIRIT BAG

1825

600-denier polyester with PVC coating • Zippered main compartment has large U-shaped opening with two zipper pulls • Side pockets • Matching web handles with self-fabric handle wrapper, reinforced at stress points • Adjustable and detachable matching shoulder strap with black rubber shoulder guard • Plastic hardware • Self-fabric piping • Removable inside bottom board.

1825 18"W x 10"H x 9"D

Call for pricing



SMALL GEAR BAG

417

600-denier polyester with PVC coating • Zippered main compartment has large U-shaped opening with two zipper pulls • Separate zippered compartments at each end • Zippered front pocket • Matching web handles with self-fabric handle wrapper, reinforced at stress points • Adjustable and detachable matching shoulder strap with black rubber shoulder guard • Plastic hardware • Self-fabric piping • Removable inside bottom board.

417 20"W x 10"H x 10"D

Call for pricing



RIPSTOP DUFFEL BAG

1703

600-denier polyester ripstop fabric with double PU coating • Bottom panel is 450-denier polyester with double PU coating • Zippered main compartment with two zipper pulls • Zippered front pocket • Black web handles with self-fabric handle wrapper, reinforced at stress points • Adjustable and detachable shoulder strap • Plastic hardware.

1703 28"W x 14"H x 13"D

Call for pricing



RIPSTOP BACKPACK

1710

Front panels of bag are 600-denier polyester ripstop with double PU coating • Remainder of bag is 600-denier polyester with PVC coating • Zippered main compartment with covered zipper and two zipper pulls • Zippered front pocket with inside pen holders • Interior cell phone holder and zippered pocket • Two mesh side pockets • Handle at top of backpack • Padded back for support and comfort • Adjustable padded shoulder straps.

1710 12½"W x 18¼"H x 6"D

Call for pricing



**CRUISE DUFFEL****1145**

70-denier nylon with PVC coating • Zippered main compartment with two zipper pulls and molded zipper • Two angled, molded zipper side pockets, one with shoe compartment • Two bound front pockets, outer pocket with mesh, feminine gathers • Interior valuables pocket • Foam padded handles • Adjustable and detachable shoulder strap • Foam padding at bottom of bag to retain shape.

1145 17"W x 11"H x 7"D

Call for pricing



BLACK/ GRAPHITE RED/ GRAPHITE ROYAL/ GRAPHITE NAVY/ GRAPHITE GRAPHITE/ ORANGE GRAPHITE/ PURPLE GRAPHITE/ LIME GRAPHITE/ POWER PINK GRAPHITE/ POWER BLUE

**CRESCENT DUFFEL BAG****1147**

70-denier nylon with PVC coating, 600-denier polyester with PVC coating • Zippered main compartment with two zipper pulls • Front and back pockets • Zippered front pocket for easy embellishment • Inside zippered pocket • Web handles with nonslip air mesh backing • Adjustable and detachable shoulder strap • Foam padding at bottom of bag to retain shape.

1147 21"W x 12"H x 8"D

Call for pricing



BLACK/ BLACK RED/ BLACK ROYAL/ BLACK COLUMBIA BLUE/ BLACK NAVY/ BLACK PURPLE/ BLACK GRAPHITE/ BLACK POWER PINK/ BLACK

**DAUNTLESS TOTE BAG****1148**

70-denier nylon with PVC coating, 600-denier polyester with PVC coating • Zippered main compartment with two zipper pulls • Front and back pockets • Zippered front pocket for easy embellishment • Inside zippered pocket • Web handles with nonslip air mesh backing • Foam padding at bottom of bag to retain shape.

1148 16"W x 14"H x 5"D

Call for pricing



BLACK/ BLACK RED/ BLACK ROYAL/ BLACK COLUMBIA BLUE/ BLACK NAVY/ BLACK PURPLE/ BLACK GRAPHITE/ BLACK POWER PINK/ BLACK

**COMPETITION BAG WITH SHOE POCKET****1141**

70-denier nylon with PVC coating • Zippered main compartment with two zipper pulls • Black mesh inserts on front sides • Right side zippered shoe compartment • Left side zippered compartment • Inside zippered pocket • Self-fabric shoulder strap • Foam padding at bottom of bag to retain shape.

1141 21¾"W x 10"H x 9"D

Call for pricing



BLACK ROYAL NAVY MAROON PURPLE



TRI-COLOR DRAWSTRING BACKPACK

1920

210-denier nylon with PU coating • Hemmed top with drawcord closure • Zippered front pocket • Black bottom with white accent piping • Web tab at bottom corner for reinforcement.

1920

14"W x 18"H

Call for pricing



TRES DRAWSTRING BACKPACK

1149

70-denier nylon with PVC coating, 600-denier polyester with PVC coating • Hemmed top with drawcord closure • Front mesh pocket • Zippered front pocket for easy embellishment.

1149

18"W x 14"H

Call for pricing



FULLY
REVERSIBLE

REVERB BACKPACK

167

210-denier nylon with PU coating • Fully reversible from drawstring bag to tote bag • Hemmed top with drawcord closure • Zippered front pocket allows for embellishment • Bottom corner grommets for reinforcement • Web handles.

167

14"W x 18"H

Call for pricing



175

173

DRAWSTRING BACKPACK

175

173

70-denier nylon with PVC coating • Hemmed top with drawcord closure • Bottom corner grommets for reinforcement.

175

Large: 17"W x 20"H

Call for pricing

173

Small: 14"W x 18"H

Call for pricing

*Available in 173 only.



HIT THE ROAD

Use our Clear Garment Bag for fewer mix-ups on road trips

CLEAR GARMENT BAG

2203

Front is clear PVC • Back is 210-denier polyester with PU coating
• Inside ID window • Two web handles meet at top when bag folds for easy carrying • Full front zipper • Top opening for hanger extension
• Three zippered pockets for storing all your accessories • Pockets are perforated and opaque for breathability and privacy.

2203

24"W x 41½"H

Call for pricing



BLACK



EASY TO CARRY,
EASY TO EMBELLISH,
& EASY TO USE

NYLON GARMENT BAG

570

420-denier nylon with PU coating • Bag folds with handles for easy carrying • Full front zipper • Top opening for hanger extension
• Outside zippered pocket compartment on back • Matching web handles with self-fabric handle wrapper, reinforced at stress points.

570

22"W x 40"H x 3"D

Call for pricing



BLACK



NAVY

BAGS

AUGUSTASPORTSWEAR.COM



INSIDE POCKET



CLEAR TOTE

2201

100% clear PVC • Meets public safety bag requirements
• Two web carry handles.

2201 12"W x 12"H x 6"D Call for pricing



BLACK



CLEAR BACKPACK

2204

100% clear PVC • Zippered main compartment with two heavyweight zipper pulls • Zippered front pocket with interior cell phone holder and small zippered pocket • Two mesh side pockets • Web handle at top of backpack • Web shoulder strap with adjustable length.

2204 11½"W x 17"H x 5½"D Call for pricing



BLACK



INSIDE POCKET



CLEAR CINCH BAG

2200

100% clear PVC • 210-denier polyester hemmed top with drawcord closure • Inside pocket • Bottom corner grommets for reinforcement.

2200 12¼"W x 15"H Call for pricing



BLACK



CLEAR CLUTCH

2202

100% clear PVC • TSA compliant • Top zipper closure.

2202 7½"W x 4½"H x 2½"D Call for pricing



BLACK



SQUARE TOTE

837

6 ounce 100% cotton canvas • Self-fabric handles reinforced at stress points • 4" side and bottom gusset.

837 15"W x 12"H x 4"D Call for pricing



GROCERY TOTE

832

6 ounce 100% cotton canvas • Self-fabric handles reinforced at stress points • 5" bottom gusset.

832 18"W x 14"H x 5"D Call for pricing



BUDGET TOTE

825

6 ounce 100% cotton canvas • Self-fabric handles, reinforced at stress points.

825 15"W x 16"H Call for pricing

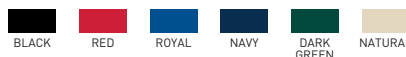


PROMOTIONAL TOTE

800

100% cotton twill • Natural web handles, reinforced at stress points.

800 12¾"W x 14"H Call for pricing





JUMBO TOTE

600

11 ounce 100% cotton canvas • Extra-long natural web handles, reinforced at stress points • 5-inch bottom gusset.

600

20"W x 15"H x 5"D

Call for pricing



BLACK



RED



ROYAL



NAVY



NATURAL



GUSSET TOTE

750

11 ounce 100% cotton canvas • Natural web handles, reinforced at stress points • 4-inch side and bottom gusset.

750

15"W x 12"H x 4"D

Call for pricing



BLACK



RED



ROYAL



NAVY



NATURAL



BOATER TOTE

625

11 ounce 100% cotton canvas • Front pocket • Extra-long contrast color self-fabric handles, reinforced at stress points • Contrast color double-ply bottom for reinforcement • 5-inch bottom gusset.

625

19½"W x 14½"H x 5"D

Call for pricing



NATURAL/
BLACK



NATURAL/
RED



NATURAL/
ROYAL



NATURAL/
NAVY



CANVAS ZIPPER TOTE

611

11 ounce 100% cotton canvas • Zippered main compartment • Extra-long self-fabric handles, reinforced at stress points • 5-inch bottom gusset.

611

20"W x 15"H x 5"D

Call for pricing



BLACK



NAVY



NATURAL



6700



HANDWARMER POCKET

TECH GLOVES

Touch screen capability lets you stay warm while using your phone

TECH GLOVES

6700



Brushed back 90% polyester/10% spandex knit with metallic dobby tech tips • Soft brushed back poly/spandex knit offers 4-way stretch • Conductive middle, pointer, and thumb fingertips provide convenient touch screen capability • Interior handwarmer pocket at back of hand keeps handwarmers secure and hands warm • Snug, double layer cuff keeps out the cold • Finger gussets provide snug fit for increased articulation.

6700

Adult: S/M-L/XL

Call for pricing



BLACK



RED



ROYAL



NAVY



GRAPHITE



POWER PINK

NEW TAILGATE BLANKET

Features ultra-soft plush fleece



TAILGATE BLANKET

3856



10.8 ounce 100% polyester micro-denier polyester knit • Pill-free • Ultra-soft plush fleece • Clean finished edges with matching coverstitched hem.

3856

54"W x 80"L

Call for pricing



DARK GREEN



RED



MAROON



ROYAL



NAVY



BLACK



OXFORD GREY