

CORPORATE 2015



PPAI 187246 ASI 37461 SAGE 63196

PPAI 187246 ASI 37461 SAGE 63196

PPAI 187246 ASI 37461 SAGE 63196



PPAI 187246 ASI 37461 SAGE 63196

TEAMS START HERE™



SPORT SHIRTS FOR ANY CORPORATE EVENT OR EVERYDAY WEAR

5021

5022

NEW FABRIC



5023

5024

NEW FABRIC



AVAIL SPORT SHIRT

100% polyester wicking pointelle mesh • 100% polyester pinhole mesh inserts
 • Breathable contrast mesh inserts at chest, sleeves, and back yoke • Ladies' fit on style 5022 • Heat sealed label • Self-fabric collar • Set-in sleeves • Box-stitched placket • Three matching buttons with cross-stitching.

5021 ADULT: S-4XL LIST PRICE 29.90 (UPCHARGE FOR 2XL-4XL)

5022 LADIES: S-2XL LIST PRICE 29.90 (UPCHARGE FOR 2XL)

* Available in Ladies only.



RIVAL SPORT SHIRT

100% polyester wicking pointelle mesh • Contrast inserts at chest with contrast piping
 • Ladies' fit on style 5024 • Heat sealed label • Rib-knit collar • Raglan sleeves • Box-stitched placket • Three matching buttons with cross-stitching.

5023 ADULT: S-4XL LIST PRICE 29.90 (UPCHARGE FOR 2XL-4XL)

5024 LADIES: S-2XL LIST PRICE 29.90 (UPCHARGE FOR 2XL)

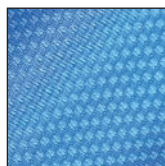


5001



5002

LADIES' FIT



INTERLOCK
DOT-TEXTURED
FABRIC

5001

5002



VISION SPORT SHIRT

100% polyester wicking textured knit • Wicks moisture • Ladies' fit on style 5002 • Heat sealed label • Self-fabric collar • Topstitched armholes and forward shoulder seams • Set-in sleeves • Box-stitched placket • Three matching buttons with cross-stitching.

5001 ADULT: S-4XL LIST PRICE 21.90 (UPCHARGE FOR 2XL-4XL)

5002 LADIES: S-2XL LIST PRICE 21.90 (UPCHARGE FOR 2XL)



5047



5048

LADIES' FIT

5047

5048

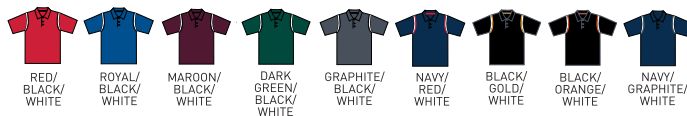


GENESIS SPORT SHIRT

100% polyester wicking snag resistant knit • Wicks moisture • Ladies' fit on style 5048 • Heat sealed label • Self-fabric collar with contrasting color neck tape • Two-color shoulder inserts • Topstitched armholes • Set-in sleeves • Box-stitched placket • Three matching buttons with cross-stitching.

5047 ADULT: S-4XL LIST PRICE 33.90 (UPCHARGE FOR 2XL-4XL)

5048 LADIES: S-2XL LIST PRICE 33.90 (UPCHARGE FOR 2XL)



5005

5006



MISSION SPORT SHIRT

100% polyester wicking textured knit • Ladies' fit on style 5006 • Heat sealed label
 • Self-fabric collar • Raglan sleeves • Contrast color inserts on front • Box-stitched
 placket • Three matching buttons with cross stitching.

5005 ADULT: S-4XL

LIST PRICE 23.90 (UPCHARGE FOR 2XL-4XL)

5006 LADIES: S-2XL

LIST PRICE 23.90 (UPCHARGE FOR 2XL)



5005



5006

LADIES'
FIT

5055

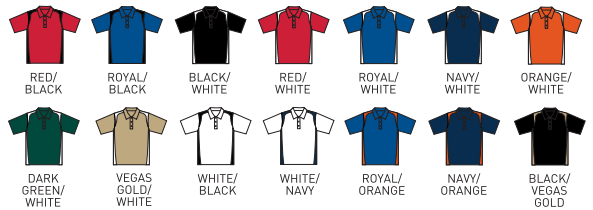


WICKING TEXTURED GAMEDAY SPORT SHIRT

100% polyester wicking closed hole mesh • 94% polyester/6% spandex
 wicking smooth knit inserts • Heat sealed label • Self-fabric collar • Contrast
 color shoulder and side inserts • Smooth inserts stretch for enhanced
 performance • Set-in sleeves • Three matching buttons.

5055 ADULT: S-4XL

LIST PRICE 33.50 (UPCHARGE FOR 2XL-4XL)





5041 **5042** 

MOTION SPORT SHIRT

100% polyester wicking snag resistant knit • 100% polyester pinhole micromesh cuff • Wicks moisture • Ladies' fit on style 5042 • Heat sealed label • Self-fabric collar • Breathable contrast color pinhole mesh neck tape, piping on shoulder, and sleeve cuff • Topstitched armholes • Set-in sleeves • Box-stitched placket • Three matching buttons with cross-stitching.

5041 ADULT: S-4XL LIST PRICE 33.90 (UPCHARGE FOR 2XL-4XL)
5042 LADIES: S-2XL LIST PRICE 33.90 (UPCHARGE FOR 2XL)



5095 **5097** 

WICKING MESH SPORT SHIRT

100% polyester wicking closed hole mesh • Ladies' fit on style 5097 • Heat sealed label • Matching rib-knit collar • Set-in sleeves • Three matching buttons.

5095 ADULT: S-3XL LIST PRICE 25.90 (UPCHARGE FOR 2XL-3XL)
5097 LADIES: S-3XL LIST PRICE 25.90 (UPCHARGE FOR 2XL-3XL)



PERFECT FOR UNIFORMS, CASUAL FRIDAYS & EVERYTHING IN BETWEEN



5012

5091

5092
LADIES'
FIT

5013
LADIES'
FIT

EXTENSIVE SELECTION OF COLORS & SIZES

5012 / 5013 

PREMIER SPORT SHIRT

100% polyester wicking closed hole mesh • 100% polyester pinhole micromesh inserts
 • Wicks moisture • Ladies' fit on style 5013 • Heat sealed label • Self-fabric collar
 • Breathable contrast color pinhole mesh neck tape, top placket facing (color bodies)
 shoulder and front inserts • Set-in sleeves • Box-stitched placket • Three matching buttons.

5012 ADULT: S-4XL LIST PRICE 31.90 (UPCHARGE FOR 2XL-4XL)
5013 LADIES: S-2XL LIST PRICE 31.90 (UPCHARGE FOR 2XL)



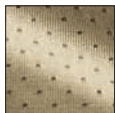
5091 / 5092 

WINNING STREAK SPORT SHIRT

100% polyester wicking closed hole mesh • 100% polyester pinhole micromesh
 shoulders and side panels • Ladies' fit on style 5092 • Heat sealed label • Self-
 fabric collar • Breathable pinhole mesh shoulders and side panels • Contrast color
 piping on shoulders, front and back • Set-in sleeves • Box-stitched placket • Three
 matching buttons with cross-stitching.

5091 ADULT: S-4XL LIST PRICE 31.90 (UPCHARGE FOR 2XL-4XL)
5092 LADIES: S-2XL LIST PRICE 31.90 (UPCHARGE FOR 2XL)





PINHOLE MICROMESH



SMOOTH KNIT



5025 PLAYOFF SPORT SHIRT

94% polyester/6% spandex knit with wicking smooth knit finish • 100% polyester pinhole micromesh inserts • Odor resistant • Wicks moisture • Heat sealed label • Self-fabric collar • Breathable contrast color pinhole micromesh front and back shoulder inserts • Set-in sleeves • Three matching buttons.

5025 ADULT: S-4XL LIST PRICE 29.90 (UPCHARGE FOR 2XL-4XL)



WICKING SPORT SHIRTS FOR ANY CORPORATE EVENT OR EVERYDAY WEAR

5015



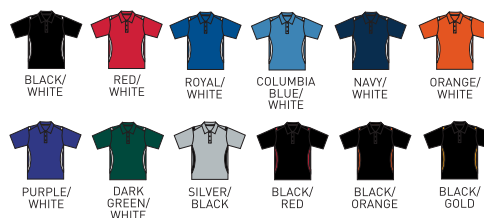
5016 LADIES' FIT



5015 5016 ALL-CONFERENCE SPORT SHIRT

100% polyester wicking closed hole mesh • Wicks moisture • Ladies' fit on style 5016 • Heat sealed label • Self-fabric collar • Contrast color front and back inserts • Set-in sleeves • Three matching buttons.

5015 ADULT: S-4XL LIST PRICE 31.90 (UPCHARGE FOR 2XL-4XL)
5016 LADIES: S-2XL LIST PRICE 31.90 (UPCHARGE FOR 2XL)





1010 **1011**  

ELITE JERSEY

100% polyester wicking smooth knit • Odor resistant • Heat sealed label
• Self-fabric collar • Set-in sleeves.

1010 ADULT: S-3XL LIST PRICE 14.90 (UPCHARGE FOR 2XL-3XL)
1011 YOUTH: S-L LIST PRICE 13.50



790 **791** NEW ADULT SIZES 5XL-6XL 

WICKING T-SHIRT

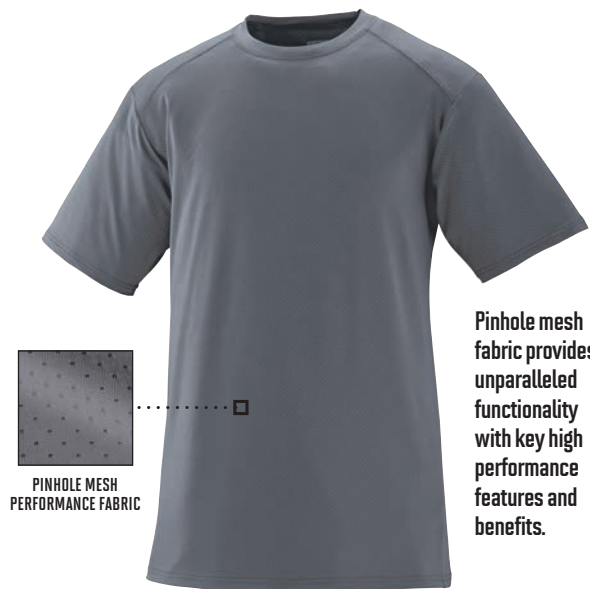
100% polyester wicking knit • Heat sealed label • Self-fabric collar • Set-in sleeves.

790 ADULT: S-6XL LIST PRICE 7.50 (UPCHARGE FOR 2XL-6XL)
791 YOUTH: XS-L LIST PRICE 7.50

*Available in 4XL. White, black, silver grey, navy, royal, and red are available for 5XL-6XL.



POWER COLORS ARE PERFECT FOR SAFETY-COLOR REQUIREMENTS



PINHOLE MESH PERFORMANCE FABRIC

Pinhole mesh fabric provides unparalleled functionality with key high performance features and benefits.

WATCH OUR PRODUCT VIDEO FOR PERFORMANCE TEES AT WWW.AUGUSTASPORTSWEAR.COM/VIDEOS

BENEFITS

Extremely soft feel Lightweight
Full coverage breathability 4-way stretch flexibility



EXA SHORT SLEEVE CREW

92% polyester/8% spandex wicking pinhole mesh • Heat sealed label
• Self-fabric collar • Set-in sleeves with shoulder inserts.

1070 ADULT: S-3XL LIST PRICE 15.90 (UPCHARGE FOR 2XL-3XL)
1071 YOUTH: S-L LIST PRICE 13.90



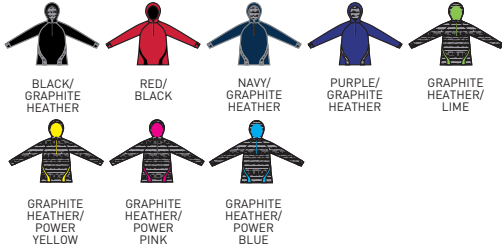
4812



LADIES FREEDOM PULLOVER

Brushed back 90% polyester/10% spandex knit • Soft brushed back poly/spandex knit offers 4-way stretch • Wicks moisture • Ladies' fit • Heat sealed label • Scuba hood • Quarter zip with zipper garage • Raglan sleeves with thumbholes for warmth • Contrast color front, back, zipper and hood lining • Open bottom.

4812 LADIES: XS-2XL LIST PRICE 45.90 (UPCHARGE FOR 2XL)



4814

4815



LADIES WIDE WAIST BRUSHED BACK POLY/SPANDEX PANT

Brushed back 90% polyester/10% spandex knit • Soft brushed back poly/spandex knit offers 4-way stretch • Wicks moisture • Ladies' fit • Heat sealed label • Low rise • Wide flat waistband for secure fit and comfort • Side seams wrap to back for flattering fit • Hidden possession pocket in waistband • Flat lock stitching • Double-needle hem.

4814 LADIES: XS-2XL LIST PRICE 37.90 (UPCHARGE FOR 2XL & TALL SIZES)

TALL LADIES TALL: MT-2XLT

4815 GIRLS: S-L LIST PRICE 35.90



4812

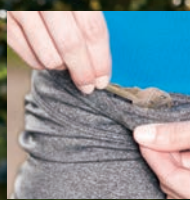
4812

4814

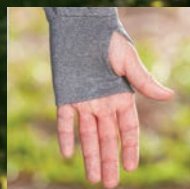
4814



BACK



HIDDEN POSSESSION POCKET



THUMBHOLE

POLY/SPANDEX BRUSHED BACK KNIT



4814 AVAILABLE IN TALL*

*Prices subject to change without notice.

NEW



THUMBHOLE

4762

KANGAROO POCKET

POLY/SPANDEX
BRUSHED BACK KNIT



90% polyester/10% spandex knit with brushed inner layer for a soft feel. Moisture management wicks sweat while 4-way stretch allows for ease of motion

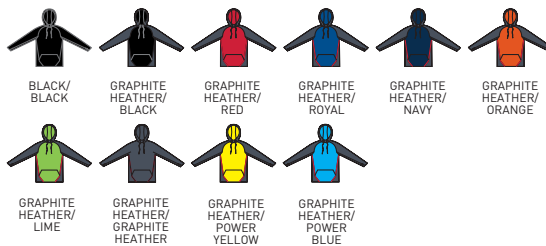
4762



ZEAL HOODY

Brushed back 90% polyester/10% spandex • Soft brushed back poly/spandex knit offers 4-way stretch • Wicks moisture • Heat sealed label • Scuba hood • Drawcord in hood on Adult sizes S-3XL only • Raglan sleeves with thumbholes for warmth • Contrast front panel and hood lining • Three-needle raglan and side seams • Front pouch pocket • Open bottom.

4762 ADULT: XS-3XL LIST PRICE 45.90 (UPCHARGE FOR 2XL-3XL)





BRUSHED BACK



LADIES BACK

4760

4810

725

728



THUMBHOLE

4760



ZEAL PULLOVER

Brushed back 90% polyester/10% spandex knit • Soft brushed back poly/spandex knit offers 4-way stretch • Wicks moisture • Heat sealed label • Contrast color half-zip pullover style • Raglan sleeves • Contrast color inserts on sleeves and front • Open bottom.

4760 ADULT: S-3XL LIST PRICE 45.90 (UPCHARGE FOR 2XL-3XL)



4810

4811



LADIES FREEDOM JACKET

Brushed back 90% polyester/10% spandex knit • Soft brushed back poly/spandex knit offers 4-way stretch • Wicks moisture • Ladies fit • Heat sealed label • Front zipper and zipper garage • Raglan sleeves with thumbholes for warmth • Contrast color inserts on back of collar, shoulder and front • Front seam pockets • Open bottom.

4810 LADIES: S-2XL LIST PRICE 45.90 (UPCHARGE FOR 2XL)

4811 GIRLS: S-L LIST PRICE 43.90



COMFORT & FUNCTION



DROPPED TAIL



4750

4752

725

728

728 AVAILABLE IN TALL*

1P Prices subject to change without notice.

4750



SYNERGY PULLOVER

90% polyester/10% spandex knit • Wicks moisture • Heat sealed label • Half-zip pullover style • Raglan sleeves with contrast color inserts • Self-fabric cuffs • Dropped tail.

4750 ADULT: XS-3XL LIST PRICE 43.90
(UPCHARGE FOR 2XL-3XL)



4752



LADIES SYNERGY PULLOVER

90% polyester/10% spandex knit • Wicks moisture • Ladies' fit • Heat sealed label • Half-zip pullover style • Raglan sleeves with contrast color inserts • Self-fabric cuffs • Dropped tail.

4752 LADIES: XS-2XL LIST PRICE 41.90
(UPCHARGE FOR 2XL)



728

729



LADIES POLY/SPANDEX PANT

90% polyester/10% spandex knit • Wicks moisture • Ladies' fit • Heat sealed label • Low rise • Double-needle coverstitched waistband with covered elastic.

728 LADIES: S-2XL LIST PRICE 33.90
(UPCHARGE FOR 2XL & TALL SIZES)

TALL LADIES TALL: MT-2XL

729 GIRLS: S-L LIST PRICE 31.90

*Available in Tall



3780**3782**

NEW FABRIC

**QUANTUM JACKET**

90% polyester/10% spandex 4-way stretch woven fabric • 4-way stretch property provides ease of movement • Ladies' fit on style 3782 • Front zipper • Contrast piping and sleeve inserts • Raglan sleeves • Front pockets • Half elastic cuffs • Open bottom.

3780 ADULT: XS-3XL LIST PRICE 45.90 (UPCHARGE FOR 2XL-3XL)**3782** LADIES: XS-2XL LIST PRICE 45.90 (UPCHARGE FOR 2XL)

BLACK/RED BLACK/ORANGE BLACK/GOLD BLACK/GRAPHITE RED/GRAPHITE ROYAL/GOLD



ROYAL/GRAPHITE NAVY/GOLD NAVY/GRAPHITE PURPLE/GRAPHITE GRAPHITE/WHITE

3784**3786**

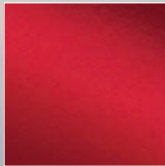
NEW FABRIC

**QUANTUM PANT**

Outer shell 90% polyester/10% spandex 4-way stretch woven fabric • Upper leg lined with 100% polyester mesh, lower leg lined with 100% taffeta • 4-way stretch property provides ease of movement • Ladies' fit on style 3786 • Covered elastic waistband with inside drawcord • Side seam pockets • Zipper on outside lower leg.

3784 ADULT: XS-3XL LIST PRICE 41.90 (UPCHARGE FOR 2XL-3XL)**3786** LADIES: XS-2XL LIST PRICE 41.90 (UPCHARGE FOR 2XL)

BLACK RED ROYAL NAVY PURPLE GRAPHITE



4-WAY STRETCH WOVEN FABRIC

3780**3782**

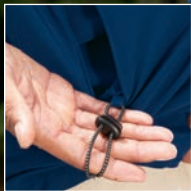
BACK

3784**3786**

WATCH OUR PRODUCT VIDEO FOR
THE QUANTUM COLLECTION AT
WWW.AUGUSTASPORTSWEAR.COM/VIDEOS



3788



OPEN BOTTOM WITH ADJUSTABLE ELASTIC DRAWCORD HIDDEN IN POCKET

3788

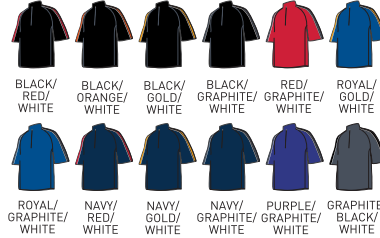
NEW FABRIC



QUANTUM SHORT SLEEVE PULLOVER

90% polyester/10% spandex 4-way stretch woven fabric • 4-way stretch property provides ease of movement • Half-zip pullover style • Contrast piping and sleeve insert • Raglan sleeves • Front pockets • Open bottom with adjustable elastic drawcord hidden in pocket.

3788 ADULT: XS-4XL LIST PRICE 41.90 (UPCHARGE FOR 2XL-4XL)



BLACK/ RED/ WHITE	BLACK/ ORANGE/ WHITE	BLACK/ GOLD/ WHITE	BLACK/ GRAPHITE/ WHITE	RED/ GRAPHITE/ WHITE	ROYAL/ GOLD/ WHITE
ROYAL/ GRAPHITE/ WHITE	NAVY/ RED/ WHITE	NAVY/ GOLD/ WHITE	NAVY/ GRAPHITE/ WHITE	PURPLE/ GRAPHITE/ WHITE	GRAPHITE/ BLACK/ WHITE

MOVE EASY WITH QUANTUM

OUR ONLY OUTERWEAR COLLECTION WITH 4-WAY STRETCH WOVEN FABRIC

3790

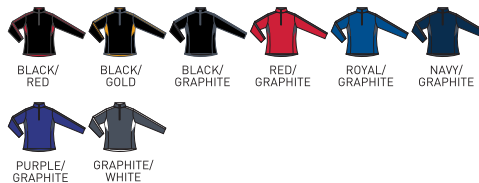
NEW FABRIC



LADIES QUANTUM PULLOVER

90% polyester/10% spandex 4-way stretch woven fabric • 100% polyester pinhole mesh insert • Ladies' fit • 4-way stretch property provides ease of movement • Half-zip pullover • Contrast mesh insert, piping, sleeve stripe and hem facing • Dropped tail • Set-in sleeves • Front pockets • Half elastic cuffs • Open bottom.

3790 LADIES: XS-2XL LIST PRICE 41.90 (UPCHARGE FOR 2XL)



BLACK/ RED	BLACK/ GOLD	BLACK/ GRAPHITE	RED/ GRAPHITE	ROYAL/ GRAPHITE	NAVY/ GRAPHITE
PURPLE/ GRAPHITE	GRAPHITE/ WHITE				



4900

4902
LADIES'
FIT

4900

4902



REVOLUTION JACKET

100% polyester woven fabric bonded to 100% polyester tricot fleece • Ladies' fit on style 4902 • Front zipper • Contrast color inserts on front and sleeves • Raglan sleeves • Front pockets • Adjustable tab with hook and loop on cuffs • Open bottom.

4900 ADULT: S-3XL

LIST PRICE 59.90 (UPCHARGE FOR 2XL-3XL)

4902 LADIES: XS-2XL

LIST PRICE 59.90 (UPCHARGE FOR 2XL)



4700

4701



LADIES POLY/SPANDEX JACKET

90% polyester/10% spandex knit • Wicks moisture • Ladies' fit • Heat sealed label • Front zipper • Raglan sleeves with contrast accent stripe • Self-fabric binding on cuffs.

4700 LADIES: S-2XL

LIST PRICE 41.90 (UPCHARGE FOR 2XL)

4701 GIRLS: S-L

LIST PRICE 39.90



4710



LADIES POLY/SPANDEX HALF-ZIP PULLOVER

90% polyester/10% spandex knit • Wicks moisture • Ladies' fit • Heat sealed label • Half-zip pullover style with locking zipper pull and piping at the collar • Raglan sleeves with contrast accent piping • White inserts under the arm.

4710 LADIES: XS-2XL

LIST PRICE 39.90 (UPCHARGE FOR 2XL)



AVAILABLE IN 23 COLORS



4390

4392

7755

7752

WATCH OUR PRODUCT VIDEO FOR
THE MEDALIST JACKET AND PANT AT
WWW.AUGUSTASPORTSWEAR.COM/VIDEOS

4390

4391

MEDALIST JACKET

Heavyweight 100% polyester brushed tricot • Front zipper
• Contrast color inserts on front • Raglan sleeves • Front seam
pockets • Elastic cuffs and bottom band.

4390 ADULT: S-2XL LIST PRICE 31.90 (UPCHARGE FOR 2XL)

4391 YOUTH: S-L LIST PRICE 29.90

7755

7756

MEDALIST PANT

Heavyweight 100% polyester brushed tricot • Covered elastic
waistband with inside drawcord • Side seam pockets • Contrast
color side inserts • Zipper on outside lower leg.

7755 ADULT: S-2XL LIST PRICE 29.90 (UPCHARGE FOR 2XL)

7756 YOUTH: S-L LIST PRICE 27.00

4392

LADIES MEDALIST JACKET

Heavyweight 100% polyester brushed tricot • Ladies' fit
• Front zipper • Contrast color inserts on front • Raglan sleeves
• Front seam pockets • Elastic cuffs • Open bottom.

4392 LADIES: S-2XL LIST PRICE 31.90 (UPCHARGE FOR 2XL)

For Youth sizes, see style 4391.

* Available in Ladies only.

7752

LADIES MEDALIST PANT

Heavyweight 100% polyester brushed tricot • Ladies' fit • Covered
elastic waistband with inside drawcord • Side seam pockets
• Contrast color side inserts • Zipper on outside lower leg.

7752 LADIES: S-2XL LIST PRICE 29.90 (UPCHARGE FOR 2XL)

For Youth sizes, see style 7756.

* Available in Ladies only.





3540 3541

CHILL FLEECE FULL-ZIP JACKET

100% polyester Chill Fleece • Pill-free • Front zipper
• Set-in sleeves • Front pockets • Elastic cuffs and bottom.

3540 ADULT: S-3XL LIST PRICE 29.90 (UPCHARGE FOR 2XL-3XL)
3541 YOUTH: XS-L LIST PRICE 29.00



3530 3531

CHILL FLEECE HALF-ZIP PULLOVER

100% polyester Chill Fleece • Pill-free • Half-zip pullover style
• Set-in sleeves • Front pockets • Elastic cuffs and bottom.

3530 ADULT: S-3XL LIST PRICE 29.10 (UPCHARGE FOR 2XL-3XL)
3531 YOUTH: XS-L LIST PRICE 27.90



3160 3161

CLEAR RAIN JACKET

100% PVC • Unisex fit • Front zipper with outside storm flap and snaps • Detachable hood with drawcord (on Adult sizes only) • Raglan sleeves with adjustable snap closures • Vented back with mesh air vents for breathability • Front pockets with flaps and snap closure • Open bottom.

3160 ADULT: S-2XL LIST PRICE 16.50 (UPCHARGE FOR 2XL)
3161 YOUTH: S-L LIST PRICE 15.50



3130



PULLOVER JACKET IN A POCKET

Outer shell of 100% nylon taffeta • Half-zip pullover style • Jacket folds up into zippered front pocket concealed under flap • Set-in sleeves • Elastic cuffs • Open bottom.

3130 ADULT: S-3XL LIST PRICE 23.50 (UPCHARGE FOR 2XL-3XL)





7710

7712

7714

7716

7710

7711

7712

NEW FABRIC



RIVAL JACKET

Heavyweight 100% polyester matte brushed tricot • Ladies' fit on style 7712
 • Front zipper • Contrast color inserts on front and sleeve, with contrast piping
 • Raglan sleeves • Two angled welt pockets • Elastic cuffs • Open bottom.

- 7710** ADULT: S-2XL LIST PRICE 33.90 (UPCHARGE FOR 2XL)
- 7711** YOUTH: S-L LIST PRICE 31.90
- 7712** LADIES: XS-2XL LIST PRICE 33.90 (UPCHARGE FOR 2XL)



7714

7715

7716

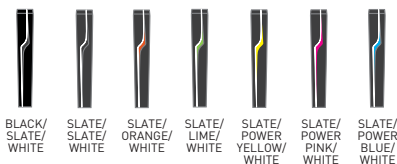
NEW FABRIC



RIVAL PANT

Heavyweight 100% polyester matte brushed tricot • Ladies' fit on style 7716
 • Covered elastic waistband with inside drawcord • Side seam pockets
 • Contrast color side insert with contrast color piping • Zipper on outside lower leg • Double-needle hemmed bottom.

- 7714** ADULT: S-2XL LIST PRICE 33.90 (UPCHARGE FOR 2XL)
- 7715** YOUTH: S-L LIST PRICE 31.90
- 7716** LADIES: XS-2XL LIST PRICE 33.90 (UPCHARGE FOR 2XL)



3710
LADIES'
FIT

3700

3700 3710



PREMIER JACKET

Outer shell of 100% polyester diamond tech • Lined with 100% polyester taffeta
 • Ladies' fit on style 3710 • Front zipper • Contrast color shoulder and front inserts
 • Set-in sleeves • Front pockets • Elastic cuffs • Open bottom.

- 3700** ADULT: XS-3XL LIST PRICE 41.90 (UPCHARGE FOR 2XL-3XL)
- 3710** LADIES: XS-2XL LIST PRICE 41.90



3715
LADIES'
FIT

3705

3705 3715



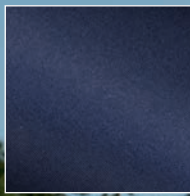
SOLID PANT

Outer shell of 100% polyester diamond tech • Lined with 100% polyester taffeta and 100% polyester mesh • Ladies' fit on style 3715 • Covered elastic waistband with inside drawcord • Side seam pockets • Zipper on outside lower leg • Single-needle hemmed bottom.

- 3705** ADULT: XS-3XL LIST PRICE 37.90 (UPCHARGE FOR 2XL-3XL & TALL SIZES)
- TALL** ADULT: LT-3XLT
- 3715** LADIES: XS-2XL LIST PRICE 37.90 (UPCHARGE FOR 2XL & TALL SIZES)
- TALL** LADIES: MT-2XLT

*Available in Tall





MATTE MICRO
POLYESTER



AVAIL JACKET

Outer shell of 100% matte micro polyester • Lined with 100% polyester taffeta • Ladies' fit on style 3502 • Front zipper • Contrast color inserts at chest and on sleeve • Set-in sleeves • Two angled welt pockets • Half elastic cuffs • Open bottom.

- 3500** ADULT: S-2XL LIST PRICE 35.90 (UPCHARGE FOR 2XL)
- 3501** YOUTH: S-L LIST PRICE 33.90
- 3502** LADIES: XS-2XL LIST PRICE 35.90 (UPCHARGE FOR 2XL)



AVAIL PANT

Outer shell of 100% matte micro polyester • Lined with 100% taffeta and 100% polyester mesh • Ladies' fit on style 3506 • Covered elastic waistband with inside drawcord • Side seam pockets • Contrast color side inserts • Zipper on outside lower leg • Double-needle hemmed bottom.

- 3504** ADULT: S-2XL LIST PRICE 31.90 (UPCHARGE FOR 2XL)
- 3505** YOUTH: S-L LIST PRICE 29.00
- 3506** LADIES: XS-2XL LIST PRICE 31.90 (UPCHARGE FOR 2XL)



NEW MATTE MICRO POLYESTER

3510

NEW FABRIC



AVAIL PULLOVER

Outer shell of 100% matte micro polyester • Lined with 100% polyester taffeta • Half-zip pullover style • Angled front yoke
 • Drawcord in hood on Adult sizes S-4XL only • Two side seam pockets • Raglan sleeves • Half elastic cuffs • Open bottom with elastic at side seams.

3510 ADULT: XS-4XL

LIST PRICE 33.90
(UPCHARGE FOR 2XL-4XL)

* Not available in 3XL-4XL.



BLACK RED ROYAL



NAVY GRAPHITE POWER PINK*



3510



3510



3745

3746



ROAR PULLOVER

Outer shell of 100% polyester diamond tech • Lined with 100% polyester taffeta • Rib knit V-neck collar • Contrast color shoulder and side inserts with contrast piping • Set-in sleeves • Front pockets • Elastic cuffs • Open bottom with elastic drawcord adjustable through pocket.

3745 ADULT: S-4XL

LIST PRICE 37.90 (UPCHARGE FOR 2XL-4XL)

3746 YOUTH: S-L

LIST PRICE 35.90



3415



MICRO POLY WINDSHIRT/LINED

Outer shell of 100% micro polyester • Lined with 100% polyester taffeta • Rib-knit V-neck collar, cuffs and bottom band • Set-in sleeves • Side seam pockets.

3415 ADULT: S-4XL LIST PRICE 27.90 (UPCHARGE FOR 2XL-4XL)



DROPPED TAIL
OPEN BOTTOM

3433



SERIES TRAINING PULLOVER

100% micro polyester with polyester closed-hole mesh inserts • Half-zip pullover style • Raglan sleeves • Contrast color inserts on front and back • Open bottom • Dropped tail.

3433 ADULT: XS-4XL LIST PRICE 33.90 (UPCHARGE FOR 2XL-4XL)





3720



DRIVE PULLOVER

Outer shell of 100% polyester diamond tech • Lined with 100% polyester taffeta • Half-zip pullover style • Contrast color front and sleeve inserts • Set-in sleeves • Front pockets • Half-elastic cuff • Open bottom.

3720 ADULT: XS-3XL

LIST PRICE 39.90 (UPCHARGE FOR 2XL-3XL)



BACK



3495

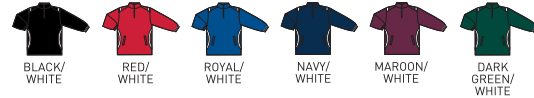


ALL-CONFERENCE PULLOVER

Outer shell of 100% micro polyester • Body lined with 100% polyester mesh • Sleeves lined with 100% polyester taffeta • Half-zip pullover style • White inserts on front, sides and back • Set-in sleeves • Front pockets • Elastic cuffs • Open bottom.

3495 ADULT: XS-3XL

LIST PRICE 37.90 (UPCHARGE FOR 2XL-3XL)



3835

COMPETITION PULLOVER

100% polyester micro fleece • Blocks wind for extra warmth • Pill-free • Ultra soft • Self-fabric crewneck with home plate patch • Raglan sleeves with contrast inserts • Contrast color side inserts • Spandex binding at cuffs.

3835 ADULT: XS-3XL

LIST PRICE 32.60 (UPCHARGE FOR 2XL-3XL)



3830

MICRO FLEECE HALF-ZIP PULLOVER

100% polyester micro fleece • Blocks wind for extra warmth • Pill-free • Ultra soft • Half-zip pullover style • Raglan sleeves with contrast inserts • Spandex binding at cuffs • Dropped tail.

3830 ADULT: XS-3XL

LIST PRICE 35.90 (UPCHARGE FOR 2XL-3XL)





5445



5445



CIRCUIT HALF-ZIP PULLOVER

9 ounce 50% cotton/50% polyester smooth athletic fleece • Contrast color collar facing and zipper • Raglan sleeves • Contrast three-needle raglan and hem detail • Open bottom • Half elastic cuffs.

5445 ADULT: S-3XL LIST PRICE 39.90 (UPCHARGE FOR 2XL-3XL)



NEW

5440

PINKTOBER 5K

PINKTOBER 5K

JOIN THE PINKTOBER 5K TODAY!



BACK



THUMBHOLE

SCUBA HOOD

STYLE MEETS FUNCTION IN THIS SLEEK LOOK

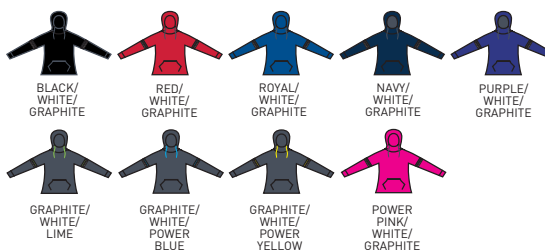
5440

NEW

LADIES SPRY HOODY

9 ounce 50% cotton/50% polyester smooth athletic fleece • Ladies' fit • Raglan sleeves with 2 color contrast stripes • Contrast color drawcord in scuba shaped hood on sizes M-2XL only • Contrast color three-needle coverstitching • Front pouch pocket • Rib-knit cuffs and bottom band.

5440 LADIES: XS-2XL LIST PRICE 36.50 (UPCHARGE FOR 2XL)





5450

5451

CIRCUIT HOODY

9 ounce 50% cotton/50% polyester smooth athletic fleece • Contrast color lined hood, front and sleeve inserts • Drawcord in hood on Adult sizes only • Raglan sleeves • Front pouch pocket • Rib-knit with cuffs and bottom band.

5450 ADULT: S-3XL LIST PRICE 36.30 (UPCHARGE FOR 2XL-3XL)

5451 YOUTH: S-L LIST PRICE 32.30



5523

5524



ZEST HOODY

100% polyester performance wicking fleece • Wicks moisture • Contrast color self-lined hood • Drawcord in hood on Adult sizes only • Contrast color sleeve inserts and piping • Set-in sleeves with self-fabric cuffs • Front pouch pocket • Open bottom.

5523 ADULT: S-3XL LIST PRICE 39.90 (UPCHARGE FOR 2XL-3XL)

5524 YOUTH: S-L LIST PRICE 37.90



5529



VORTEX HOODED SWEATSHIRT

100% polyester performance wicking fleece • Contrast color self-lined hood • Drawcord in hood on Adult sizes S-3XL only • Half-zip pullover style • Contrast color shoulder inserts • Set-in sleeves • Self-fabric cuffs • Front pouch pocket • Open bottom.

5529 ADULT: XS-3XL LIST PRICE 39.90 (UPCHARGE FOR 2XL-3XL)



5527



FANATIC HOODED SWEATSHIRT

100% polyester performance wicking fleece • Contrast color self-lined hood • Drawcord in hood on Adult sizes S-3XL only • Contrast color front and sleeve inserts • Raglan sleeves • Self-fabric cuffs • Front pouch pocket • Open bottom.

5527 ADULT: XS-3XL LIST PRICE 39.90 (UPCHARGE FOR 2XL-3XL)





5460

5461

VOLT HOODY

9 ounce 50% cotton/50% polyester smooth athletic fleece • Contrast color lined hood • Contrast color sleeve inserts • Drawcord in hood on Adult sizes only • Raglan sleeves • Double-needle coverstitched bottom band • Front pouch pocket • Rib-knit with cuffs and bottom band.

5460 ADULT: S-3XL

LIST PRICE 37.50 (UPCHARGE FOR 2XL-3XL)

5461 YOUTH: S-L

LIST PRICE 33.50



5470

5471

CUBE HOODY

9 ounce 50% cotton/50% polyester smooth athletic fleece • Lined hood • Drawcord in hood on Adult sizes only • Raglan sleeves • Double-needle coverstitched bottom band • Front pouch pocket • Rib-knit cuffs and bottom band.

5470 ADULT: S-3XL

LIST PRICE 31.90 (UPCHARGE FOR 2XL-3XL)

5471 YOUTH: S-L

LIST PRICE 25.00



SIDE SEAM POCKETS

5505

5506



WICKING FLEECE HOODED SWEATSHIRT

100% polyester performance wicking fleece • Self-lined hood • Drawcord in hood on Adult sizes only • Set-in sleeves • Front pouch pocket • Self-fabric cuffs and bottom band.

5505 ADULT: S-4XL

LIST PRICE 37.90 (UPCHARGE FOR 2XL-4XL)

5506 YOUTH: S-L

LIST PRICE 37.00



5515

5516



WICKING FLEECE SWEATPANT

100% polyester performance wicking fleece • Covered elastic waistband with inside drawcord • Side seam pockets • Open bottom.

5515 ADULT: S-3XL

LIST PRICE 32.50 (UPCHARGE FOR 2XL-3XL)

5516 YOUTH: S-L

LIST PRICE 30.30





2060

2115

2060

MEDIUM APRON WITH POUCH

Colors are 65% polyester/35% cotton twill • Natural is 100% cotton twill • 1/2-inch wide neck straps tie for adjustment • 1/2-inch wide waist ties, reinforced at stress points • Center-divided pouch pocket • Single-needle hemmed sides.

2060 20"W X 24"L CALL FOR PRICING

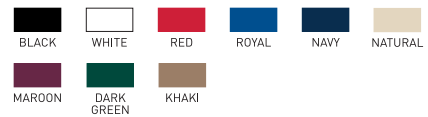


2115

WAIST APRON

Colors are 65% polyester/35% cotton twill • Natural is 100% cotton twill • 1/2-inch wide waist ties, reinforced at stress points • Triple-divided pouch pocket • Single-needle hemmed sides.

2115 20"W X 10"L CALL FOR PRICING



SERVE WITH SPIRIT- EVERYTHING YOU NEED FOR THE COFFEE SHOP, THE GREENHOUSE AND MORE



4250



2090

4250

MEDIUM LENGTH APRON WITH POUCH

65% polyester/35% cotton twill • 1-inch wide neck strap with slider adjustment • 1-inch wide waist ties, reinforced at stress points • Triple-divided pouch pocket • Rounded bottom with self-fabric binding.

4250 22"W X 24"L CALL FOR PRICING

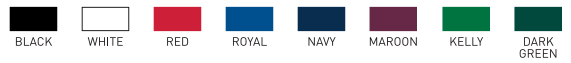


2090

SMOCK

65% polyester/35% cotton twill • Adjustable side ties • Center-divided pouch pocket • Self-fabric binding at neck and sides.

2090 19"W X 28"L CALL FOR PRICING



GET THE GOODS FOR CONCESSION WORKERS, TICKET TAKERS & VOLUNTEERS



TRIPLE DIVIDED
POUCH POCKET

EXTRA LONG
WAIST TIES

2700

CAFÉ WAIST APRON

65% polyester/35% cotton twill • ½-inch wide extra-long waist ties
• Triple-divided pouch pocket, reinforced at stress points • Pencil pocket
• Single-needle hemmed sides.

2700 20"W X 10"L

CALL FOR PRICING



2120

OVERSIZED WAIST APRON

65% polyester/35% cotton twill • ½-inch wide extra-long waist ties, reinforced at stress points • Triple-divided pouch pocket • Single-needle hemmed sides.

2120 23"W X 12"L

CALL FOR PRICING



2145

VEST

65% polyester/35% cotton twill • Three-button front closure • Two side seam patch pockets • Self-fabric binding at front, neck and armholes • Single-needle hemmed bottom.

2145 ADULT: S-4XL

CALL FOR PRICING



PERFECT FOR
RESTAURANTS, HOTELS,
BISTROS & MORE



ADJUSTABLE
NECK LOOP

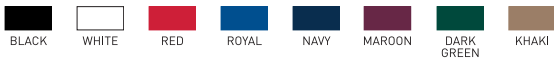
CENTER DIVIDED
PATCH POCKET

2720

WAITER APRON WITH POCKETS

65% polyester/35% cotton twill • 1/2-inch wide extra-long tunnel-tie permits maximum adjustability of the neck loop • Center-divided patch pocket • Pencil pocket • All stress points reinforced • Single-needle hemmed sides.

2720 22"W X 30"L CALL FOR PRICING



ADJUSTABLE
NECK LOOP

CENTER DIVIDED
PATCH POCKET

2730

OVERSIZED WAITER APRON WITH POCKETS

65% polyester/35% cotton twill • 1/2-inch wide extra-long tunnel-tie permits maximum adjustability of the neck loop • Center-divided patch pocket • Pencil pocket • All stress points reinforced • Single-needle hemmed sides.

2730 24"W X 30"L CALL FOR PRICING



ADJUSTABLE
NECK LOOP

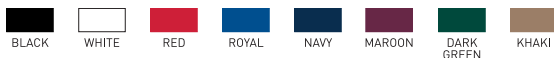
CENTER DIVIDED
POUCH POCKET

2710

TAVERN APRON WITH POUCH

65% polyester/35% cotton twill • 1/2-inch wide extra-long tunnel-tie permits maximum adjustability of the neck loop • Center-divided pouch pocket • Pencil pocket • All stress points reinforced • Single-needle hemmed sides.

2710 20"W X 24"L CALL FOR PRICING



2300

APRON WITH ADJUSTABLE NECK LOOP AND WAIST TIES

65% polyester/35% cotton twill • 1/2-inch wide tunnel-tie permits maximum adjustability of the neck loop and waist ties • Center divided patch pocket • Rounded bottom with self-fabric binding.

2300 28"W X 30"L CALL FOR PRICING





4350

FULL LENGTH APRON WITH POCKETS

65% polyester/35% cotton twill • 1-inch wide neck strap with slider adjustment
 • 1-inch wide waist ties, reinforced at stress points • Two patch pockets
 • Rounded bottom with self-fabric binding.

4350 22"W X 30"L **CALL FOR PRICING**



2070

LONG APRON WITH POCKET

Colors are 65% polyester/35% cotton twill • Natural is 100% cotton twill •
 ½-inch wide loop neck • ½-inch wide waist ties, reinforced at stress points •
 One patch pocket • Single-needle hemmed sides and bottom.

2070 26"W X 35"L **CALL FOR PRICING**

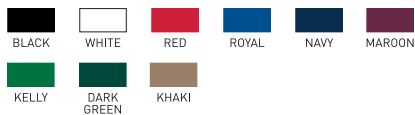


4300

FULL LENGTH APRON

65% polyester/35% cotton twill • 1-inch wide neck strap with slider adjustment
 • 1-inch wide waist ties, reinforced at stress points • Rounded bottom with self-fabric binding.

4300 22"W X 30"L **CALL FOR PRICING**



5965

FULL WIDTH APRON WITH POCKETS

65% polyester/35% cotton twill • 1-inch wide neck strap with slider adjustment
 • 1-inch wide waist ties, reinforced at stress points • Center-divided patch pocket
 • Rounded bottom with self-fabric binding.

5965 28"W X 30"L **CALL FOR PRICING**

