

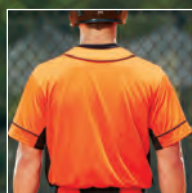


2017 BASEBALL/SOFTBALL



1660

1452
PG. 26



BACK



1070
PG. 19

1452
PG. 26

1662



BACK

SLUGGER JERSEY

1660

1661



100% polyester propelit micromesh wicking knit body • 92% polyester/8% spandex wicking pinhole mesh side panels and sleeve inserts • Pad print label

• Contrast color pinhole mesh side and sleeve inserts • Contrast color piping on neck, placket and sleeves • Set-in sleeves • Buttons spaced for easy embellishment • Fishtail bottom.

1660

Adult: S-2XL

List Price 29.00 (Upcharge for 2XL)

1661

Youth: S-L

List Price 27.00



BLACK/
WHITE



BLACK/
GOLD



WHITE/
WHITE



RED/
BLACK



RED/
WHITE



ROYAL/
WHITE



ROYAL/
RED



NAVY/
WHITE



NAVY/
RED



ORANGE/
BLACK



DARK
GREEN/
WHITE



SILVER/
BLACK

1662



SLEEVELESS SLUGGER JERSEY

1662

1663



100% polyester propelit micromesh wicking knit body • Pad print label • Contrast color shoulder and side inserts • Contrast color piping on neck and placket • Buttons spaced for easy embellishment • Fishtail bottom.

1662

Adult: S-2XL

List Price 25.90 (Upcharge for 2XL)

1663

Youth: S-L

List Price 23.90



BLACK/
WHITE



RED/
WHITE



ROYAL/
WHITE



NAVY/
WHITE



ORANGE/
BLACK



DARK
GREEN/
WHITE



SILVER/
BLACK



1650

1477
PG. 24



1652

1070
PG. 19

1477
PG. 24

WHEEL HOUSE JERSEY

1650

1651



100% polyester action tex knit • 92% polyester/8% spandex pinhole mesh inserts • Wicks moisture • Heat sealed label • Contrast color side and sleeve inserts • Set-in sleeves • Buttons spaced for easy embellishment • Fishtail bottom.

1650 Adult: S-3XL List Price 27.90 (Upcharge for 2XL-3XL)

1651 Youth: S-L List Price 25.90



BLACK/
WHITE



RED/
BLACK



RED/
WHITE



ROYAL/
WHITE



ROYAL/
RED



NAVY/
WHITE



DARK
GREEN/
WHITE



LIME/
WHITE



BLUE
GREY/
BLACK



GRAPHITE/
WHITE

CLASSIC LOOKS IN ACTION TEX

1652



SLEEVELESS WHEEL HOUSE JERSEY

1652

1653



100% polyester action tex knit • 92% polyester/8% spandex pinhole mesh inserts • Wicks moisture • Heat sealed label • Contrast color side inserts • Buttons spaced for easy embellishment • Fishtail bottom.

1652 Adult: S-3XL List Price 25.90 (Upcharge for 2XL-3XL)

1653 Youth: S-L List Price 23.90



BLACK/
WHITE



RED/
BLACK



RED/
WHITE



ROYAL/
WHITE



ROYAL/
RED



NAVY/
WHITE



DARK
GREEN/
WHITE



LIME/
WHITE



BLUE
GREY/
BLACK



GRAPHITE/
WHITE



WICKING MESH BUTTON FRONT JERSEY WITH BRAID TRIM

593

594



100% polyester wicking mesh • Heat sealed label • Contrast color braid trim on front and sleeves • Set-in sleeves • Buttons spaced for easy embellishment • Fishtail bottom.

593

Adult: S-3XL

List Price 31.50 (Upcharge for 2XL-3XL)

594

Youth: M-L

List Price 27.70



WICKING TWO-BUTTON BASEBALL JERSEY

585

586



100% polyester wicking mesh • Heat sealed label • Rib-knit collar • Contrast color accent piping on front shoulder and sleeve • Set-in sleeves • Two-button placket • Fishtail bottom.

585

Adult: S-3XL

List Price 22.70 (Upcharge for 2XL-3XL)

586

Youth: S-L

List Price 18.90



1680

1447

PG. 83

AVAILABLE DECEMBER 2016 SULTAN JERSEY

1680

1681



100% polyester propelit micromesh wicking knit • Pad print label • Set-in sleeves • Buttons spaced for easy embellishment • Fishtail bottom.

1680

Adult: S-3XL

List Price 25.90 (Upcharge for 2XL-3XL)

1681

Youth: S-L

List Price 23.90





STANZA JERSEY

Wicks moisture and has 4-way stretch flexibility for intense game time

BASEBALL/SOFTBALL

2612

6310
PG. 56

1552

1475
PG. 24

2612

DIGI CAMO SLEEVE



BACK

AVAILABLE OCTOBER 2016 STANZA JERSEY

1552 1553



100% polyester propelit micromesh wicking knit body • Pad print label • Contrast color two-button placket, piping, and cuff insert • Raglan sleeves.

1552 Adult: S-3XL List Price 21.90 (Upcharge for 2XL-3XL)
1553 Youth: S-L List Price 19.90



DIGI CAMO SLEEVE

2612 2613



84% polyester/16% spandex knit • Roller printed to reduce chance of dye migration • Odor-resistant

• Wicks moisture • Ultra tight fit • Flatlock stitching • Top hem with elastic to secure in place.

2612 Adult: S/M-L/XL
2613 Youth

Call for pricing
Call for pricing



WHITE
DIGI



1805

1475
PG. 24

ROLLER-PRINTED FOR EASY EMBELLISHMENT

The Mod Camo Wicking Tee offers a minimized risk of dye migration



5538/5539 PG. 51

MOD CAMO WICKING TEE 1805 1806



100% polyester wicking printed knit
• Roller printed to reduce chance of dye migration • Pad print label

• Self-fabric collar • Set-in sleeves.

1805	Adult: S-3XL	List Price 14.50 (Upcharge for 2XL-3XL)
1806	Youth: S-L	List Price 13.90





6235
PG. 58



2610

1548

1440
PG. 26

POP FLY JERSEY

Features Mod Camo print on collar and sleeves

POP FLY JERSEY

1548

1549



100% polyester wicking knit • 100% polyester wicking printed knit collar and sleeves • Pad print label • Self-fabric collar

• Set-in sleeves • Two-button placket.

1548

Adult: S-3XL

List Price 19.90 (Upcharge for 2XL-3XL)

1549

Youth: S-L

List Price 17.90



BLACK/
BLACK
MOD



WHITE/
BLACK
MOD



RED/
RED
MOD



ROYAL/
ROYAL
MOD



NAVY/
RED
NAVY
MOD



NAVY/
NAVY
MOD



ORANGE/
ORANGE
MOD



MAROON/
MAROON
MOD



GOLD/
GOLD
MOD



DARK
GREEN/
DARK
GREEN
MOD



SILVER/
BLACK
MOD



2610

SOLID SLEEVE

SOLID SLEEVE

2610

2611



84% polyester/16% spandex knit
• Odor-resistant • Wicks moisture
• Ultra tight fit • Flatlock stitching

• Top hem with elastic to secure in place.

2610

Adult: S/M-L/XL

Call for pricing

2611

Youth

Call for pricing



BLACK



WHITE



RED



ROYAL



NAVY



GRAPHITE

6291
PG. 59

1556

1478
PG. 24



ROLLER-PRINTED DIGI CAMO

Reduces chance of dye migration

DIGI CAMO WICKING TWO-BUTTON JERSEY

1555

1556



100% polyester wicking printed knit • Roller printed to reduce chance of dye migration • Pad print label • Self-fabric collar • Set-in sleeves • Two-button placket.

1555

Adult: S-4XL

List Price 16.90 (Upcharge for 2XL-4XL)

1556

Youth: S-L

List Price 16.50



BLACK DIGI



WHITE DIGI



RED DIGI



ROYAL DIGI



COLUMBIA BLUE DIGI



NAVY DIGI



ORANGE DIGI



MAROON DIGI



PURPLE DIGI



DARK GREEN DIGI



LIME DIGI



POWER YELLOW DIGI



POWER PINK DIGI



POWER BLUE DIGI



SAND DIGI

AVAILABLE IN 15 COLORS

DIGI CAMO WICKING T-SHIRT

1798

1799



100% polyester wicking printed knit • Roller printed to reduce chance of dye migration • Pad print label • Self-fabric collar • Set-in sleeves.

1798

Adult: S-4XL

List Price 14.30 (Upcharge for 2XL-4XL)

1799

Youth: S-L

List Price 13.90



BLACK DIGI



WHITE DIGI



RED DIGI



ROYAL DIGI



COLUMBIA BLUE DIGI



NAVY DIGI



ORANGE DIGI



MAROON DIGI



PURPLE DIGI



DARK GREEN DIGI



LIME DIGI



POWER YELLOW DIGI



POWER PINK DIGI



POWER BLUE DIGI



SAND DIGI

COLOR BLOCK DIGI CAMO JERSEY

Available in 10 colors



BACK

COLOR BLOCK DIGI CAMO JERSEY

1782

1783



100% polyester wicking knit body and piping with 100% polyester wicking printed knit contrast inserts • Roller printed to reduce chance of dye migration • Pad print

label • Self-fabric collar • Raglan sleeves.

1782 Adult: S-3XL List Price 17.90 (Upcharge for 2XL-3XL)
1783 Youth: S-L List Price 15.90



6310
PG. 56

1782

1465
PG. 24

BASEBALL/SOFTBALL



BACK

GAMER JERSEY

1520

1521



100% polyester wicking knit • 92% polyester/8% spandex
pinhole mesh inserts • Heat sealed label • Self-fabric collar
• Contrast color shoulder, sleeve and side inserts • Set-in
sleeves • Two-button placket.

1520

Adult: S-3XL

List Price 21.90 (Upcharge for 2XL-3XL)

1521

Youth: S-L

List Price 20.00



BLACK/
WHITE



WHITE/
BLACK



RED/
WHITE



ROYAL/
WHITE



NAVY/
WHITE



ORANGE/
WHITE



PURPLE/
WHITE



GOLD/
WHITE



DARK
GREEN/
WHITE



SILVER
GREY/
BLACK

PINHOLE MESH
INSERTS

WICKING 100% POLYESTER

Wicks moisture away from the body



BASE HIT JERSEY

1540

1541



100% polyester wicking knit • 92% polyester/8% spandex
wicking pinhole mesh inserts • Heat sealed label • Self-fabric
collar • Front and back of jersey are wicking knit • Contrast color
pinhole mesh sleeve and side inserts for breathability • Contrast piping in sleeve
and side seams • Raglan sleeves • Two-button placket.

1540

Adult: S-3XL

List Price 23.90 (Upcharge for 2XL-3XL)

1541

Youth: XS-L

List Price 21.90



BLACK/
RED/
WHITE



BLACK/
GOLD/
WHITE



WHITE/
GRAPHITE/
BLACK



RED/
BLACK/
WHITE



ROYAL/
BLACK/
WHITE



ROYAL/
RED/
WHITE



COLUMBIA
BLUE/
BLACK/
WHITE



NAVY/
RED/
WHITE



ORANGE/
BLACK/
WHITE



DARK
GREEN/
BLACK/
WHITE



BREATHABLE PINHOLE MESH BACK

RBI JERSEY

1525 1526



100% polyester wicking knit/100% polyester wicking mesh
• 92% polyester/8% spandex pinhole mesh inserts • Heat sealed label • Self-fabric collar • Front of jersey is wicking knit • Back of jersey is pinhole mesh for breathability • Contrast piping in shoulder seams • Contrast color front and side inserts • Set-in sleeves • Two-button placket.

1525

Adult: S-3XL

List Price 23.90 (Upcharge for 2XL-3XL)

1526

Youth: S-L

List Price 21.90



BLACK/
SILVER
GREY/
WHITE



WHITE/
SILVER
GREY/
BLACK



RED/
BLACK/
WHITE



ROYAL/
RED/
WHITE



ROYAL/
ORANGE/
WHITE



ROYAL/
GOLD/
WHITE



ROYAL/
SILVER
GREY/
WHITE



NAVY/
RED/
WHITE



NAVY/
SILVER
GREY/
WHITE



ORANGE/
BLACK/
WHITE



MAROON/
BLACK/
WHITE



PURPLE/
BLACK/
WHITE



DARK
GREEN/
BLACK/
WHITE



VEGAS
GOLD/
BLACK/
WHITE

PINHOLE MESH INSERTS



POWER PLUS JERSEY

428 429



100% polyester wicking knit • 100% polyester mesh inserts
• Heat sealed label • Self-fabric collar • Raglan sleeves with contrast color inserts • Two-button placket.

428

Adult: S-3XL

List Price 19.90 (Upcharge for 2XL-3XL)

429

Youth: S-L

List Price 18.90



BLACK/
WHITE/
SILVER
GREY



WHITE/
SILVER
GREY/
BLACK



RED/
WHITE/
SILVER
GREY



ROYAL/
WHITE/
SILVER
GREY



COLUMBIA
BLUE/
WHITE/
SILVER
GREY



NAVY/
WHITE/
SILVER
GREY



ORANGE/
WHITE/
SILVER
GREY



MAROON/
WHITE/
SILVER
GREY



GOLD/
WHITE/
BLACK



DARK
GREEN/
WHITE/
SILVER
GREY



VEGAS
GOLD/
WHITE/
BLACK



SILVER
GREY/
WHITE/
BLACK

COORDINATING LADIES/GIRLS, STYLE 1532|1533 PG. 31

BLAST JERSEY

1530

1531



100% polyester wicking knit • 92% polyester/8% spandex wicking pinhole mesh inserts • Heat sealed label • Self-fabric collar • Front and back of jersey are wicking knit • Contrast color pinhole mesh sleeve and side inserts for breathability • Contrast piping in sleeve and side seams • Raglan sleeves • Two-button placket • Fishtail bottom.

1530 Adult: S-3XL List Price 23.90 (Upcharge for 2XL-3XL)
1531 Youth: S-L List Price 21.90



FLYBALL JERSEY

1545

1546



100% polyester wicking knit body • 92% polyester/8% spandex wicking pinhole mesh back and inserts • 100% polyester printed wicking knit inserts on some colorways • Heat sealed label • Self-fabric collar • Back, bottom of sleeves, and side panels are pinhole mesh for added breathability • Contrast piping in collar • Set-in sleeves • One-button placket.

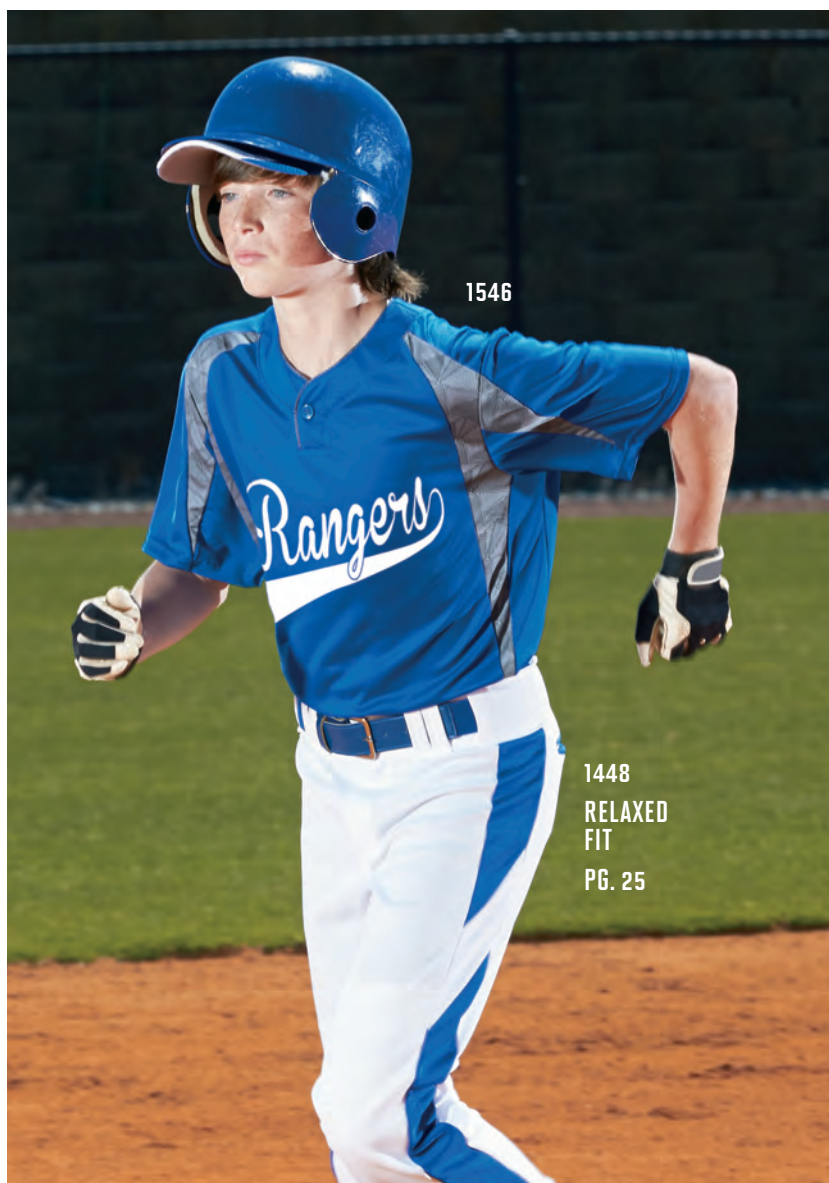
1545 Adult: S-3XL List Price 25.00 (Upcharge for 2XL-3XL)
1546 Youth: S-L List Price 23.00

***Printed wicking knit on some colorways.**

Featuring Ultra Geo Print Inserts



Featuring Solid Color Inserts



1448
RELAXED
FIT
PG. 25



COORDINATING LADIES/GIRLS, STYLE 1212/1213 PG. 31

WICKING TWO-BUTTON JERSEY

426

427



100% polyester wicking knit • Heat sealed label • Self-fabric collar • Set-in sleeves • Two-button placket.

426

Adult: S-4XL

List Price ~~Was 15.90~~ Now 10.50

(Upcharge for 2XL-4XL)

427

Youth: S-L

List Price ~~Was 14.00~~ Now 9.90



BLACK



WHITE



RED



ROYAL



NAVY



ORANGE



MAROON



GOLD



PURPLE



DARK GREEN



VEGAS GOLD



SILVER GREY

AVAILABLE IN 16 COLORS

TWO-BUTTON BASEBALL JERSEY

580

581



50% polyester/50% cotton jersey knit • Rib-knit collar • Set-in sleeves • Two-button placket.

580

Adult: S-4XL

List Price 15.90 (Upcharge for 2XL-4XL)

581

Youth: S-L

List Price 13.30

***Available in 3XL and 4XL.**



BLACK*



WHITE*



RED*



ROYAL*



NAVY*



ORANGE



MAROON*



LIGHT BLUE



GOLD



PURPLE



KELLY



DARK GREEN*



ATHLETIC HEATHER*



ASH*



SILVER GREY



TEAL

SIX-OUNCE TWO-BUTTON BASEBALL JERSEY

643

644



6 ounce 50% polyester/50% cotton jersey knit • Rib-knit collar • Set-in sleeves • Two-button placket.

643

Adult: S-3XL

List Price 16.00 (Upcharge for 2XL-3XL)

644

Youth: S-L

List Price 13.50



BLACK



WHITE



RED



ROYAL



NAVY



ORANGE



MAROON



GOLD



PURPLE



KELLY



DARK GREEN



ATHLETIC HEATHER



ASH



BACK



COORDINATING LADIES/GIRLS, STYLE 1002/1003 PG. 33

AVAIL CREW

1000

1001



92% polyester/8% spandex wicking pinhole mesh body • 100% polyester wicking smooth knit yoke and sleeves • Odor resistant • Pad print label • Self-fabric collar • Set-in sleeves • Contrast color inserts at chest, on sleeve and back yoke.

1000

Adult: S-3XL

List Price 21.90 (Upcharge for 2XL-3XL)

1001

Youth: S-L

List Price 19.90



BLACK/
WHITE



BLACK/
RED



BLACK/
ORANGE



BLACK/
GOLD



RED/
WHITE



ROYAL/
WHITE



ROYAL/
GOLD



NAVY/
WHITE



NAVY/
GOLD



MAROON/
WHITE



PURPLE/
WHITE



DARK
GREEN/
WHITE



GRAPHITE/
WHITE



PINHOLE
MESH BACK



AVAILABLE IN 21 COLORS

COORDINATING LADIES/GIRLS, STYLE 1092/1093 PG. 33

WINNING STREAK CREW

1090

1091



100% polyester wicking smooth knit • 92% polyester/8% spandex pinhole mesh back and inserts • Odor resistant • Heat sealed label • Self-fabric collar • Set-in sleeves • Contrast color piping on shoulders, front and back.

1090

Adult: S-3XL

List Price 23.90 (Upcharge for 2XL-3XL)

1091

Youth: S-L

List Price 21.90



BLACK/
WHITE



BLACK/
GOLD



WHITE/
BLACK



WHITE/
RED



WHITE/
ROYAL



WHITE/
NAVY



RED/
BLACK



RED/
WHITE



ROYAL/
WHITE



ROYAL/
ORANGE



ROYAL/
GOLD



COLUMBIA
BLUE/
WHITE



NAVY/
WHITE



NAVY/
ORANGE



NAVY/
GOLD



ORANGE/
WHITE



MAROON/
WHITE



PURPLE/
WHITE



PURPLE/
GOLD



DARK
GREEN/
WHITE



GRAPHITE/
WHITE



PINHOLE MESH
PERFORMANCE FABRIC

1515

1465
PG. 24

PINHOLE MESH

Pinhole Mesh fabric provides unparalleled functionality with key high performance features and benefits

QUASAR JERSEY

1515

1516



92% polyester/8% spandex wicking pinhole mesh
• Heat sealed label • Contrast color inserts • Self-fabric collar • Set-in sleeves.

1515

Adult: S-3XL

List Price 21.00 (Upcharge for 2XL-3XL)

1516

Youth: XS-L

List Price 19.20



BLACK/
GRAPHITE/
WHITE



WHITE/
GRAPHITE/
BLACK



RED/
GRAPHITE/
WHITE



ROYAL/
GRAPHITE/
WHITE



NAVY/
GRAPHITE/
WHITE



ORANGE/
GRAPHITE/
WHITE



MAROON/
GRAPHITE/
WHITE



GOLD/
GRAPHITE/
WHITE



PURPLE/
GRAPHITE/
WHITE



DARK
GREEN/
GRAPHITE/
WHITE



LIME/
GRAPHITE/
WHITE

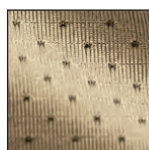


GRAPHITE/
BLACK/
WHITE



POWER
YELLOW/
GRAPHITE/
WHITE

PINHOLE MESH
PERFORMANCE FABRIC



AVAILABLE IN 15 COLORS

NITRO JERSEY

1535

1536



92% polyester/8% spandex wicking pinhole mesh
• 100% polyester wicking knit • Heat sealed label
• Contrast color self-fabric V-neck collar • Contrast color sleeve and side inserts • Raglan sleeves.

1535

Adult: S-3XL

List Price 20.50 (Upcharge for 2XL-3XL)

1536

Youth: S-L

List Price 18.50



BLACK/
RED/
WHITE



BLACK/
GOLD/
WHITE



WHITE/
BLACK/
SILVER
GREY



RED/
BLACK/
WHITE



ROYAL/
BLACK/
WHITE



ROYAL/
GOLD/
WHITE



COLUMBIA
BLUE/
BLACK/
WHITE



NAVY/
GOLD/
WHITE



ORANGE/
BLACK/
WHITE



MAROON/
BLACK/
WHITE



GOLD/
BLACK/
WHITE



PURPLE/
BLACK/
WHITE



DARK
GREEN/
BLACK/
WHITE



VEGAS
GOLD/
BLACK/
WHITE



LIME/
BLACK/
WHITE



AVAILABLE IN 16 COLORS

GAMEDAY CREW

1020

1021



100% polyester wicking smooth knit • Odor resistant
• Heat sealed label • Self-fabric collar • Contrast color
shoulder and side inserts • Set-in sleeves.

1020

Adult: S-4XL

List Price 25.00 (Upcharge for 2XL-4XL)

1021

Youth: S-L

List Price 21.00



PINHOLE MESH
INSERT

COORDINATING LADIES/GIRLS, STYLE 1055|1056 PG. 34

PREMIER CREW

1050

1051



100% polyester wicking smooth knit • 92%
polyester/8% spandex pinhole mesh inserts • Odor
resistant • Heat sealed label • Self-fabric collar • Set-in
sleeves • Breathable contrast color pinhole mesh shoulder and front inserts.

1050

Adult: S-3XL

List Price 21.00 (Upcharge for 2XL-3XL)

1051

Youth: S-L

List Price 18.50



COORDINATING LADIES/GIRLS, STYLE 5045|5046 PG. 34

MOTION CREW

5043

5044



100% polyester wicking smooth knit • Odor resistant
• Heat sealed label • Self-fabric collar • Topstitched
shoulder seams • Set-in sleeves • Contrast color
piping on shoulder • Contrast color insert at sleeve hem.

5043

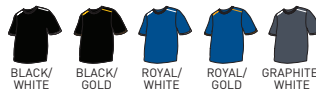
Adult: S-3XL

List Price 20.50 (Upcharge for 2XL-3XL)

5044

Youth: S-L

List Price 17.90



COORDINATING LADIES, STYLE 1803 PG. 35

SLEET WICKING TEE

1801

1802



100% polyester wicking printed knit • Roller printed to reduce chance of dye migration • Pad print label • Self-fabric collar • Set-in sleeves.

1801 Adult: S-3XL List Price 14.50 (Upcharge for 2XL-3XL)
1802 Youth: S-L List Price 12.50



ULTRA GEO PRINT

COORDINATING LADIES/GIRLS, STYLE 1792|1793 PG. 35

ELEVATE WICKING T-SHIRT

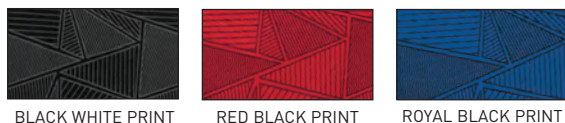
1795

1796



100% polyester wicking printed knit • Pad print label • Self-fabric collar • Set-in sleeves.

1795 Adult: S-3XL List Price 13.90 (Upcharge for 2XL-3XL)
1796 Youth: S-L List Price 11.90



BASEBALL/SOFTBALL



6291
PG. 59

1796

1448
RELAXED
FIT
PG. 25



PINHOLE MESH INSERT



MESH INSERT



SURGE JERSEY

1510

1511



100% polyester wicking knit • 92% polyester/8% spandex pinhole mesh inserts • Heat sealed label • Contrast color self-fabric collar • Contrast color front, side and sleeve inserts • Set-in sleeves.

1510

Adult: S-3XL

List Price 19.90 (Upcharge for 2XL-3XL)

1511

Youth: S-L

List Price 18.30



WICKING COLOR BLOCK JERSEY

218

219



100% polyester wicking knit with 93% polyester/7% spandex mesh • Heat sealed label • Rib-knit collar • Poly/spandex mesh inserts • Raglan sleeves.

218

Adult: S-3XL

List Price 17.00 (Upcharge for 2XL-3XL)

219

Youth: S-L

List Price 14.50



SLEEVE STRIPE JERSEY

360

361

362



50% polyester/50% cotton jersey knit • Contrast color rib-knit V-neck collar • Contrast color sleeve stripes • Set-in sleeves.

360

Adult: S-3XL

List Price 13.50 (Upcharge for 2XL-3XL)

361

Youth: S-L

List Price 11.00

362

Toddler: 2T/3T-4T

List Price 9.50

*Available in 3XL.

Colors listed in Red are available in Toddler sizes.



BENEFIT:

Wicks moisture



VALUE PRICE

COORDINATING LADIES/GIRLS, STYLE 1790/1791 PG. 34

WICKING T-SHIRT

790

791



100% polyester wicking knit • Heat sealed label • Self-fabric collar • Set-in sleeves.

790

Adult: S-6XL

Call for pricing

791

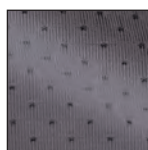
Youth: XS-XL

Call for pricing

*Available in 4XL-6XL.



PINHOLE MESH PERFORMANCE FABRIC



Pinhole Mesh fabric provides unparalleled functionality with key high performance features and benefits.

BENEFIT:

Wicks moisture



COORDINATING LADIES, STYLE 1072 PG. 34

EXA SHORT SLEEVE CREW

1070



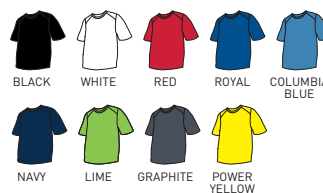
92% polyester/8% spandex wicking pinhole mesh • Heat sealed label • Self-fabric collar • Set-in sleeves with shoulder inserts.

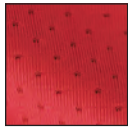
1070

Adult: S-3XL

List Price 15.90

(Upcharge for 2XL-3XL)





PINHOLE MESH SLEEVES



NOVA JERSEY

1505

1506



100% polyester wicking knit • 92% polyester/8% spandex wicking pinhole mesh sleeves • Heat sealed label • Contrast color self-fabric collar • Contrast color pinhole mesh raglan sleeves • Fishtail bottom.

1505

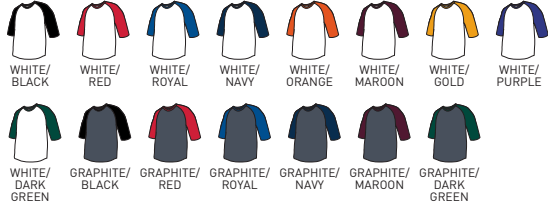
Adult: S-3XL

List Price 13.90 (Upcharge for 2XL-3XL)

1506

Youth: S-L

List Price 12.20



BASEBALL JERSEY

420

421

422



50% polyester/50% cotton jersey knit • Contrast color rib-knit collar and raglan sleeves • Serged fishtail bottom.

420

Adult: S-3XL

List Price 9.90

(Upcharge for 2XL-3XL & Athletic Heather bodies)

421

Youth: S-L

List Price 9.00

422

Toddler: 2T/3T-4T

List Price 7.30

***Available in 3XL.**

Colors listed in Red are available in Toddler sizes.



SHORT SLEEVE BASEBALL JERSEY

423

424



50% polyester/50% cotton jersey knit • Contrast color rib-knit collar and raglan sleeves • Serged fishtail bottom.

423

Adult: S-3XL

List Price 9.80

(Upcharge for 2XL-3XL & Athletic Heather bodies)

424

Youth: S-L

List Price 8.60

***Available in 3XL**





1509

5542
PG. 49864
PG. 27

GO OLD SCHOOL

With the added comfort of moisture management

WICKING SHORT SLEEVE BASEBALL JERSEY

1508

1509



100% polyester wicking knit • Pad print label • Contrast color self-fabric collar and raglan sleeves • Fishtail bottom.

1508

Adult: S-3XL

List Price 11.00 (Upcharge for 2XL-3XL)

1509

Youth: S-L

List Price 9.90

WHITE/
BLACKWHITE/
REDWHITE/
ROYALWHITE/
NAVYRED/
BLACKRED/
ROYALRED/
NAVYORANGE/
BLACKGOLD/
BLACKGOLD/
DARK
GREENGRAPHITE/
PURPLE



2788

DIGI CAMO WICKING LONG SLEEVE T-SHIRT

2788

2789



100% polyester wicking printed knit • Roller printed to reduce chance of dye migration • Pad print label • Self-fabric collar and cuffs • Set-in sleeves.

2788

Adult: S-3XL

List Price 19.00 (Upcharge for 2XL-3XL)

2789

Youth: S-L

List Price 17.00



BLACK
DIGI



WHITE
DIGI



RED
DIGI



ROYAL
DIGI



NAVY
DIGI



ORANGE
DIGI



MAROON
DIGI



DARK
GREEN
DIGI



LIME
DIGI

ROLLER- PRINTED FABRIC

**Reduces chance
of dye migration**



MOD CAMO LONG SLEEVE WICKING TEE

1807

1808



100% polyester wicking printed knit • Roller printed to reduce chance of dye migration • Pad print label • Self-fabric collar • Set-in sleeves.

1807

Adult: S-3XL

List Price 19.00 (Upcharge for 2XL-3XL)

1808

Youth: S-L

List Price 17.00



BLACK
MOD



RED
MOD



ROYAL
MOD



NAVY
MOD



ORANGE
MOD



MAROON
MOD



GOLD
MOD



PURPLE
MOD



DARK
GREEN
MOD

KINERGY LONG SLEEVE TEE

2807



100% polyester heathered wicking knit
• Cationic dye used to create heathered look reduces chance of dye migration

• Pad print label • Self-fabric crew neck collar • Set-in sleeves.

2807 Adult: S-3XL List Price 17.50 (Upcharge for 2XL-3XL)



COORDINATING LADIES/GIRLS, STYLE 1788/1789 PG. 42

WICKING LONG SLEEVE T-SHIRT

788

789



100% polyester wicking knit • Heat sealed label
• Self-fabric collar and cuffs • Set-in sleeves.

788 Adult: S-3XL Call for pricing
789 Youth: S-L Call for pricing



VALUE PRICE



WICKING MOCK TURTLENECK

797

799



100% polyester wicking knit • Heat sealed label
• Self-fabric collar and cuffs • Set-in sleeves.

797 Adult: S-3XL List Price 19.50 (Upcharge for 2XL-3XL)
799 Youth: S-L List Price 15.90





1475



1477



BACK



1465

LINE DRIVE BASEBALL/ SOFTBALL PANT

1475

1476

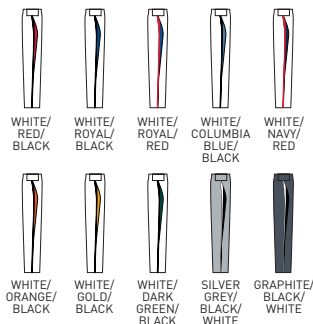


14 ounce 100% polyester double knit • Relaxed fit - full cut with longer inseam and open bottom
• Anti-roll elastic waistband with seven pro-style

belt loops • Two-snap closure • Brass zipper fly • Two set-in double welt back pockets • Reinforced double-needle coverstitched front and back rise and side seams • Reinforced knees • Contrast color side inserts and piping • 35-inch inseam on Adult large • Graded inseam.

1475 Adult: S-3XL List Price 41.90
(Upcharge for 2XL-3XL)

1476 Youth: S-XL List Price 39.90



SLIDER BASEBALL/ SOFTBALL PANT

1477

1478

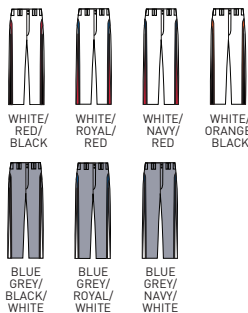


14 ounce 100% polyester double knit • Relaxed fit - full cut with longer inseam and open bottom
• Anti-roll elastic waistband with seven

pro-style belt loops • Two-snap closure • Brass zipper fly • Two contrast set-in double welt back pockets • Reinforced double-needle coverstitched back rise and side seams • Reinforced knees • Two color contrast side inserts and back yoke • 35-inch inseam on Adult large • Graded inseam.

1477 Adult: S-3XL List Price 39.90
(Upcharge for 2XL-3XL)

1478 Youth: S-XL List Price 37.90



TRIPLE PLAY BASEBALL/ SOFTBALL PANT

1465

1466

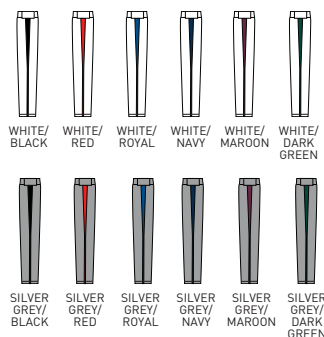


14 ounce 100% polyester double knit • Relaxed fit - full cut with longer inseam and open bottom
• Anti-roll elastic waistband with seven pro-style

belt loops • Two-snap closure • Brass zipper fly • Two set-in double welt back pockets • Reinforced coverstitching at back seam • Reinforced knees • Contrast color side inserts and piping • 35-inch inseam on Adult Large • Graded inseam.

1465 Adult: S-3XL List Price 39.90
(Upcharge for 2XL-3XL)

1466 Youth: XS-XL List Price 37.90





1495



1490



1447



BACK

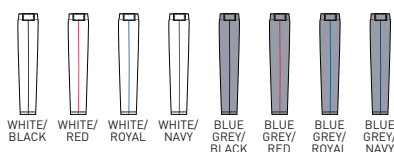
SWEPT BASEBALL/ SOFTBALL PANT

1495

1496

R 15 ounce 100% polyester double knit with inner mesh layer • Relaxed fit - full cut with longer inseam and open bottom • Anti-roll elastic waistband with seven pro-style belt loops • Two-snap closure • Brass zipper fly • Two set-in double welt back pockets • Reinforced double-needle coverstitched back rise and side seams • Reinforced knees • Contrast color piping at side seams • 35-inch inseam on Adult large • Graded inseam.

1495 Adult: S-3XL List Price 41.80
(Upcharge for 2XL-3XL)
1496 Youth: S-XL List Price 39.90



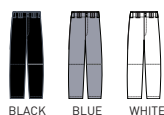
WALK OFF BASEBALL/ SOFTBALL PANT

1490

1491

R 15 ounce 100% polyester double knit with inner mesh layer • Relaxed fit - full cut with longer inseam and open bottom • Anti-roll elastic waistband with seven pro-style belt loops • Two-snap closure • Brass zipper fly • Two set-in double welt back pockets • Reinforced double-needle coverstitched back rise and side seams • Reinforced knees • 35-inch inseam on Adult large • Graded inseam.

1490 Adult: S-3XL List Price 39.90
(Upcharge for 2XL-3XL)
1491 Youth: S-XL List Price 37.90



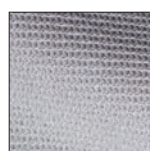
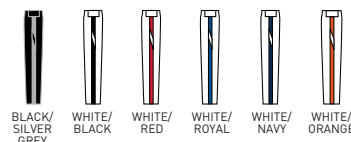
SERIES COLOR BLOCK BASEBALL/SOFTBALL PANT

1447

1448

R 11 ounce 100% polyester double knit • Relaxed fit - full cut with longer inseam and open bottom • Anti-roll elastic waistband with seven pro-style belt loops • Two-snap closure • Zipper fly • Two contrast set-in double welt back pockets • Reinforced double-needle coverstitched front and back rise and side seams • Reinforced knees • Contrast color side inserts • 35-inch inseam on Adult large • Graded inseam.

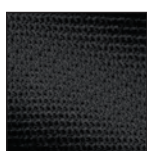
1447 Adult: S-3XL List Price 31.90
(Upcharge for 2XL-3XL)
1448 Youth: S-XL List Price 29.90



INSIDE MESH BACK

BENEFITS:

- Double knit inner mesh layer provides cooler performance
- Relaxed fit
- Open bottom



INSIDE MESH BACK



SERIES KNEE LENGTH BASEBALL PANT

1452 **1453**

R 11 ounce 100% polyester double knit • Elastic waistband with seven pro-style belt loops • Two-snap closure • Zipper fly • Two set-in double welt back pockets • Reinforced knees • Elastic cuffs • Knee length with graded inseam • 18-inch inseam on Adult large.

1452 Adult: S-2XL List Price 21.00
(Upcharge for 2XL)
1453 Youth: XS-L List Price 18.50



SERIES BASEBALL/ SOFTBALL PANT

1440 **1441**

R 11 ounce 100% polyester double knit • Relaxed fit - full cut with longer inseam and open bottom • Elastic waistband with tunnel belt loops • Two-snap closure • Zipper fly • Two set-in double welt back pockets (one on youth) • Reinforced knees • 35-inch inseam on Adult large • Graded inseam.

1440 Adult: S-3XL List Price ~~Was 23.90~~ Now 22.00
(Upcharge for 2XL-3XL)
1441 Youth: XS-XL List Price ~~Was 19.50~~ Now 18.00

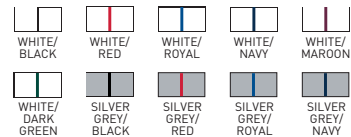


SERIES BASEBALL/SOFTBALL PANT WITH PIPING

1445 **1446**

R 11 ounce 100% polyester double knit • Relaxed fit - full cut with longer inseam and open bottom • Elastic waistband with tunnel belt loops • Two-snap closure • Zipper fly • Two set-in double welt back pockets (one on youth) • Reinforced knees • Contrast color piping at side seam • 35-inch inseam on Adult large • Graded inseam.

1445 Adult: S-3XL List Price 29.10
(Upcharge for 2XL-3XL)
1446 Youth: XS-XL List Price 26.70



GET IN THE SWING

Pick the pants that look great and provide the
comfort and performance features you love



801



804



864



SOFTBALL/BASEBALL PANT

801

811



11 ounce 100% polyester double knit • Elastic waistband with tunnel belt loops • Two-snap closure • Zipper fly • Right back patch pocket • Reinforced knees • Elastic cuffs • Graded inseam.

801 Adult: S-2XL List Price ~~Was 22.88~~ Now 15.00 (Upcharge for 2XL)

811 Youth: XS-XL List Price ~~Was 17.10~~ Now 13.00



BLACK



WHITE



NAVY



SILVER GREY



BLUE GREY

PULL-UP SOFTBALL/ BASEBALL PANT

808

804



10 ounce 100% polyester double knit • Elastic waistband with inside drawcord • Right back patch pocket • Reinforced knees • Elastic cuffs • Graded inseam.

808 Adult: S-XL List Price ~~Was 16.48~~ Now 9.90

804 Youth: XS-XL List Price ~~Was 11.40~~ Now 7.90



BLACK



WHITE



NAVY



SILVER GREY

PULL-UP PRO PANT

863

864



10 ounce 100% polyester double knit • Elastic waistband with inside drawcord • Belt loops • Right back patch pocket • Reinforced knees • Elastic cuffs • Graded inseam.

863 Adult: S-XL List Price 17.00

864 Youth: XS-XL List Price 11.90



BLACK



WHITE



SILVER GREY

ELASTIC BASEBALL BELT

6001

6002

Heavy-duty stretch elastic webbing • Matching color embossed vinyl tabs and slider for adjustability • Nickel-finished hardware • Adult width 1½", Youth width 1¼".

6001 Adult Call for pricing
6002 Youth Call for pricing



GRAPHITE



BLACK



WHITE



RED



ROYAL



COLUMBIA BLUE



NAVY



ORANGE



MAROON



GOLD



PURPLE



KELLY



DARK GREEN



VEGAS GOLD



SILVER GREY



TEAL



LIME



POWER YELLOW



POWER PINK





EASY TO DECORATE

Action Tex jersey with faux front has two functional buttons at top with the rest sewn closed

LADIES CLOSER JERSEY

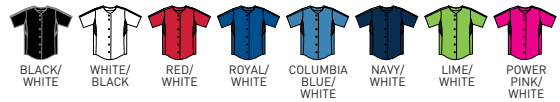
1654



100% polyester action tex knit • 92% polyester/8% spandex side underarm inserts • Faux full button jersey • Wicks moisture • Ladies' fit • Heat sealed label • Contrast color middle side

inserts • Set-in sleeves • Buttons spaced for easy embellishment • Fishtail bottom.

1654 Ladies: XS-2XL List Price 25.90 (Upcharge for 2XL)



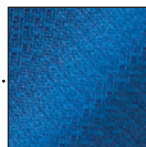
LADIES DIAMOND JERSEY

1225



100% polyester wicking Duo Knit • Ladies' fit • Heat sealed label • Contrast color piping trim around neck • Raglan sleeves with contrast color sleeve insert with piping on front • One-button placket • Fishtail bottom.

1225 Ladies: XS-2XL List Price 23.50 (Upcharge for 2XL)



WICKING DUO KNIT

SHARPEST UNIFORM ON THE FIELD

Style meets comfort with
this Propelit Mesh duo

LADIES OVERPOWER TWO-BUTTON JERSEY

1670

1671



100% polyester propelit micromesh • Wicks moisture
• Ladies fit • Pad print label • Self-fabric two-button
placket with contrast color piping • Raglan sleeves
with contrast color piping in the hem.

1670

Ladies: S-2XL

List Price 21.90 (Upcharge for 2XL)

1671

Girls: S-L

List Price 19.90



BLACK/
WHITE



WHITE/
SILVER



RED/
WHITE



ROYAL/
WHITE



NAVY/
WHITE



ORANGE/
WHITE



LIME/
WHITE



POWER
YELLOW/
WHITE



POWER
PINK/
WHITE



POWER
BLUE/
WHITE

LADIES SHOCKWAVE SHORT

962

963



100% polyester propelit micromesh • Wicks moisture
• Pad print label • Ladies fit • Covered elastic waistband
with inside drawcord • Contrast color piping on back yoke
• 5-inch inseam • Girls inseam graded.

962

Ladies: S-2XL

List Price 17.90 (Upcharge for 2XL)

963

Girls: S-L

List Price 15.90



BLACK/
WHITE



RED/
WHITE



ROYAL/
WHITE



NAVY/
WHITE



LIME/
WHITE



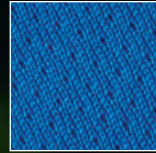
GRAPHITE/
WHITE



POWER
PINK/
WHITE



PROPELIT
MESH



BACK

1671



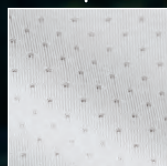
963

5-INCH
(GIRLS
INSEAM
GRADED)

LADIES SOFTBALL

6267
PG. 61

1665



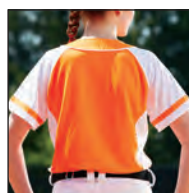
PINHOLE MESH
INSERT

1240
PG. 44

PINHOLE MESH
INSERT

1668

1242
PG. 45



BACK

FAUX FULL BUTTON JERSEY

LADIES WINNER JERSEY

1665

1666



100% polyester propelit micromesh wicking knit body
• 92% polyester/8% spandex wicking pinhole mesh side panels • Ladies' fit • Pad print label • Faux full button jersey
• Contrast color pinhole mesh side inserts • Contrast color piping on neck and placket • Contrast color raglan sleeves with contrasting stripe • Buttons spaced for easy embellishment • Fishtail bottom.

1665 Ladies: S-3XL

List Price 25.90 (Upcharge for 2XL-3XL)

1666 Girls: S-L

List Price 23.90



BLACK/
WHITE



WHITE/
WHITE



RED/
WHITE



ROYAL/
WHITE



NAVY/
WHITE



POWER
PINK/
WHITE



POWER
BLUE/
WHITE



POWER
ORANGE/
WHITE

WINNING WAYS

Micromesh jerseys look & feel great in a soft mechanical stretch fabric that moves with you for unbeatable performance

LADIES SLEEVELESS WINNER JERSEY

1668

1669



100% polyester propelit micromesh wicking knit body
• 92% polyester/8% spandex wicking pinhole mesh side inserts • Ladies' fit • Pad print label • Faux full button jersey
• Contrast color piping on placket • Contrast color piping on placket • Contrast color pinhole mesh side inserts with contrasting stripe • Buttons spaced for easy embellishment • Fishtail bottom.

1668 Ladies: S-2XL

List Price 21.90 (Upcharge for 2XL)

1669 Girls: S-L

List Price 19.90



BLACK/
WHITE



WHITE/
WHITE



RED/
WHITE



ROYAL/
WHITE



NAVY/
WHITE



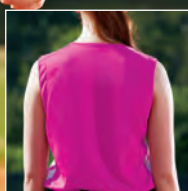
POWER
PINK/
WHITE



POWER
BLUE/
WHITE



POWER
ORANGE/
WHITE



BACK



PINHOLE MESH

COORDINATING ADULT/YOUTH, STYLE 1530|1531 PG. 12

LADIES BLAST JERSEY

1532 1533



100% polyester wicking knit • 92% polyester/8% spandex
pinhole mesh inserts • Ladies' fit • Heat sealed label

• Self-fabric collar • Front and back of jersey are wicking knit
• Contrast color pinhole mesh sleeve and side inserts for breathability • Contrast piping in sleeve and side seams • Raglan sleeves • Two-button placket • Fishtail bottom.

1532 Ladies: S-2XL List Price 23.90 (Upcharge for 2XL)

1533 Girls: S-L List Price 21.00



COORDINATING ADULT/YOUTH, STYLE 426|427 PG. 13

LADIES WICKING TWO-BUTTON JERSEY

1212 1213



100% polyester wicking knit • Ladies' fit • Heat sealed label
• Self-fabric collar • Set-in sleeves • Two-button placket.

1212 Ladies: S-2XL List Price 14.80 (Upcharge for 2XL)

1213 Girls: S-L List Price 13.60



LADIES SLEEVELESS TWO-BUTTON SOFTBALL JERSEY

550 551

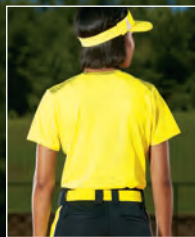


50% polyester/50% cotton jersey knit • Ladies' fit
• Rib-knit collar and armholes • Two-button placket.

550 Ladies: S-2XL List Price 13.80 (Upcharge for 2XL)

551 Girls: S-L List Price 11.90





PINHOLE MESH
FRONT & BACK

1360



1242
PG. 45

LADIES VIGOROUS JERSEY

1360 1361



92% polyester/8% spandex wicking pinhole mesh • 100% polyester printed wicking knit inserts and collar • Ladies' fit • Heat sealed

label • Self-fabric V-neck collar • Set-in sleeves.

1360 Ladies: S-2XL

List Price 19.90 (Upcharge for 2XL)

1361 Girls: S-L

List Price 17.90



WHITE ULTRA GEO PRINT

Colors Available with White Print



Colors Available with Black Print



BLACK ULTRA GEO PRINT



LADIES HEAT JERSEY

1270 1271



92% polyester/8% spandex wicking pinhole mesh • Ladies' fit • Heat sealed label • Self-fabric V-neck collar • Raglan sleeves with contrast color inserts • Contrast color side inserts • Fishtail bottom.

1270 Ladies: S-2XL

List Price 21.90 (Upcharge for 2XL)

1271 Girls: S-L

List Price 19.90



LADIES MATRIX JERSEY

1365 1366



100% polyester smooth wicking knit body • 92% polyester/8% spandex wicking pinhole mesh back • Odor resistant • Ladies' fit • Heat sealed label • Self-fabric V-neck collar • Set-in sleeves • Contrast color side inserts and triangular sleeve inserts.

1365 Ladies: S-2XL

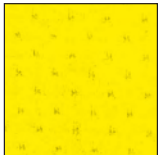
List Price 19.90 (Upcharge for 2XL)

1366 Girls: S-L

List Price 17.90



PINHOLE MESH PERFORMANCE FABRIC



Pinhole mesh fabric provides unparalleled functionality with key high performance features and benefits.



PINHOLE MESH
BACK





LADIES MYSTIC JERSEY

1295

1296



92% polyester/8% spandex wicking pinhole mesh
• Ladies' fit • Heat sealed label • Set-in sleeves • Self-fabric V-neck collar • Two color triangular shoulder inserts.

1295

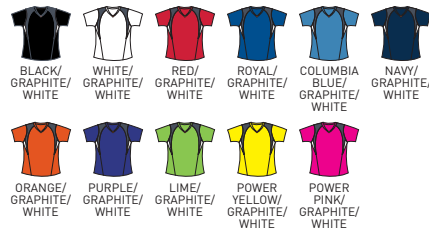
Ladies: S-2XL

List Price 17.90 (Upcharge for 2XL)

1296

Girls: S-L

List Price 15.90



BACK



COORDINATING ADULT/YOUTH, STYLE 1000|1001 PG. 14

LADIES AVAIL JERSEY

1002

1003



92% polyester/8% spandex wicking pinhole mesh body • 100% polyester wicking smooth knit yoke and sleeves • Odor resistant • Ladies' fit • Pad print label

• Self-fabric V-neck collar • Set-in sleeves • Contrast color inserts at chest, on sleeve and back yoke.

1002

Ladies: S-2XL

List Price 21.90 (Upcharge for 2XL)

1003

Girls: S-L

List Price 19.90



PINHOLE MESH BACK



COORDINATING ADULT/YOUTH, STYLE 1090|1091 PG. 14

LADIES WINNING STREAK JERSEY

1092

1093



100% polyester wicking smooth knit
• 92% polyester/8% spandex wicking pinhole mesh back and side panels

• Odor resistant • Ladies' fit • Heat sealed label • Self-fabric V-neck collar
• Set-in sleeves • Breathable pinhole mesh shoulders, side panels, and back • Contrast color piping on front and back of shoulders and side panels.

1092

Ladies: S-2XL

List Price 23.90 (Upcharge for 2XL)

1093

Girls: S-L

List Price 21.90



COORDINATING ADULT/YOUTH, STYLE 1050|1051 PG. 16

LADIES PREMIER JERSEY

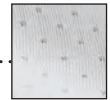
1055

1056



100% polyester wicking smooth knit • 92% polyester/8% spandex pinhole mesh inserts • Odor resistant • Ladies' fit • Heat sealed label • Self-fabric V-neck collar • Topstitched shoulder seams • Set-in sleeves • Breathable contrast color pinhole mesh shoulder and front inserts.

1055 Ladies: S-2XL List Price 21.00 (Upcharge for 2XL)
1056 Girls: S-L List Price 18.50



PINHOLE MESH INSERT

COORDINATING ADULT/YOUTH, STYLE 5043|5044 PG. 16

LADIES MOTION JERSEY

5045

5046



100% polyester wicking smooth knit • Odor resistant • Wicks moisture • Ladies' fit • Heat sealed label • Self-fabric V-neck collar • Topstitched shoulder seams • Set-in sleeves • Contrast color piping on shoulder • Contrast color insert at sleeve hem.

5045 Ladies: S-2XL List Price 18.40 (Upcharge for 2XL)
5046 Girls: S-L List Price 16.50



COORDINATING ADULT, STYLE 1070 PG. 19

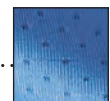
LADIES EXA JERSEY

1072



92% polyester/8% spandex wicking pinhole mesh • Ladies' fit • Heat sealed label • Self-fabric V-neck collar • Set-in sleeves with shoulder inserts.

1072 Ladies: S-2XL List Price 15.90 (Upcharge for 2XL)



PINHOLE MESH

COORDINATING ADULT/YOUTH, STYLE 790|791 PG. 19

LADIES WICKING T-SHIRT

1790

1791



100% polyester wicking knit • Ladies' fit • Heat sealed label • Self-fabric V-neck collar • Set-in sleeves.

1790 Ladies: XS-3XL Call for pricing
1791 Girls: S-L Call for pricing



VALUE PRICE



COORDINATING ADULT/YOUTH, STYLE 1801/1802 PG. 17

LADIES SLEET WICKING TEE

1803



100% polyester wicking printed knit • Roller printed to reduce chance of dye migration • Ladies' fit • Pad print label • Self-fabric V-neck collar • Set-in sleeves.

1803

Ladies: XS-2XL

List Price 13.90 (Upcharge for 2XL)



1793

1243
PG. 45

ROCK THE FIELD

In Ultra Geo Print

COORDINATING ADULT/YOUTH, STYLE 1795/1796 PG. 17

LADIES ELEVATE WICKING T-SHIRT

1792

1793



100% polyester wicking printed knit • Ladies' fit • Pad print label • Self-fabric V-neck collar • Set-in sleeves.

1792

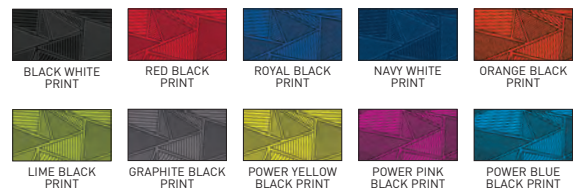
Ladies: XS-2XL

List Price 13.90 (Upcharge for 2XL)

1793

Girls: S-L

List Price 11.90





PINHOLE MESH

LADIES MVP JERSEY

1300 1301



92% polyester/8% spandex wicking pinhole mesh • Ladies' fit • Heat sealed label • Self-fabric V-neck collar • Raglan sleeves with contrast color inserts.

1300 Ladies: S-2XL List Price 17.90 (Upcharge for 2XL)
1301 Girls: S-L List Price 16.40



PINHOLE MESH

LADIES HIT JERSEY

1310 1311



92% polyester/8% spandex wicking pinhole mesh • Ladies' fit • Heat sealed label • Contrasting self-fabric V-neck collar

• Set-in sleeves • Contrasting side panel with white triangular insert at hem.

1310 Ladies: S-2XL List Price 17.90 (Upcharge for 2XL)
1311 Girls: S-L List Price 16.40



WICKING SMOOTH KNIT

Odor-resistant 100% polyester jerseys help you stay cool

LADIES BLASH JERSEY

1218 1219

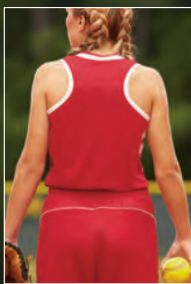


100% polyester wicking smooth knit • Odor resistant • Ladies' fit • Pad print label • Self-fabric V-neck color collar with contrast color detail • Contrast color

stitching on princess seams • Set-in cap sleeves.

1218 Ladies: S-2XL List Price 15.90 (Upcharge for 2XL)
1219 Girls: S-L List Price 13.90





RACERBACK

1672

962
PG. 29

ARRIVE IN FULL FORCE

Take it to the max with the
new Ladies Full Force Tank

LADIES FULL FORCE TANK

1672

1673



100% polyester propelit micromesh
• Wicks moisture • Ladies fit • Pad print
label • Self-fabric two color mitered

V-neck collar • Contrast color self-fabric binding on armholes
• Two color side inserts • Racerback styling.

1672

Ladies: S-2XL

List Price 19.90 (Upcharge for 2XL)

1673

Girls: S-L

List Price 17.90



BLACK/
WHITE



WHITE/
GRAPHITE



RED/
WHITE



ROYAL/
WHITE



NAVY/
WHITE



MAROON/
WHITE



PURPLE/
WHITE



DARK
GREEN/
WHITE



BACK

AVAILABLE DECEMBER 2016

LADIES FIREBOLT JERSEY

1674

1675



100% polyester propelit micromesh
wicking knit • Ladies fit • Pad print
label • Contrast color self-fabric

mitered V-neck collar • Contrast color self-fabric binding on
armholes • Contrast color piping on body.

1674

Ladies: S-2XL

List Price 15.90 (Upcharge for 2XL)

1675

Girls: S-L

List Price 13.90



BLACK/
WHITE



WHITE/
BLACK



RED/
WHITE



ROYAL/
WHITE



NAVY/
WHITE



PURPLE/
WHITE



LIME/
WHITE



POWER
PINK/
WHITE



LADIES WICKING MESH POWERHOUSE JERSEY

527

528



100% polyester wicking mesh • Ladies' fit • Heat sealed label
• Two-color self-fabric V-neck collar • Contrast color side panels.

527
528

Ladies: S-2XL
Girls: S-L

List Price 19.90 (Upcharge for 2XL)
List Price 17.80



LADIES WICKING MESH EXTREME JERSEY

515

516



100% polyester wicking mesh • 100% polyester dazzle fabric side panels • Ladies' fit • Heat sealed label
• Two-color self-fabric V-neck collar • Contrast color side panels with accent piping • White dazzle side panels.

515
516

Ladies: S-2XL
Girls: S-L

List Price 18.50 (Upcharge for 2XL)
List Price 17.30



LADIES TRIUMPH JERSEY

1235

1236



100% polyester wicking smooth knit • 100% polyester wicking Duo Knit inserts • Odor resistant • Ladies' fit
• Heat sealed label • Contrast color Duo Knit V-neck collar • Contrast color front and back Duo Knit inserts.

1235
1236

Ladies: S-2XL
Girls: S-L

List Price 18.50 (Upcharge for 2XL)
List Price 16.40



LADIES TRIUMPH SHORT

1238

1239



100% polyester wicking smooth knit • 100% polyester wicking Duo Knit inserts • Odor resistant • Ladies' fit
• Heat sealed label • Covered elastic waistband with inside drawcord • Contrast color front and back Duo Knit inserts • 5-inch inseam • Girls inseam graded.

1238
1239

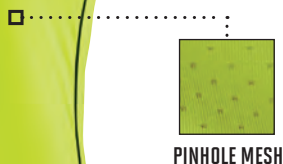
Ladies: S-2XL
Girls: S-L

List Price 17.80 (Upcharge for 2XL)
List Price 15.70



1238

5-INCH
(GIRLS
INSEAM
GRADED)

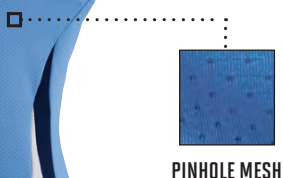
**LADIES STORM JERSEY****1350****1351**

92% polyester/8% spandex wicking pinhole mesh • Ladies' fit • Heat sealed label • Self-fabric V-neck collar

• Contrast color piping on forward shoulder and side seam.

1350 Ladies: S-2XL List Price 14.50 (Upcharge for 2XL)

1351 Girls: S-L List Price 13.50

**LADIES TORNADO JERSEY****1355****1356**

92% polyester/8% spandex wicking pinhole mesh • Ladies' fit • Heat sealed label • Contrast color self-fabric V-neck collar • Two-color

triangular front panels at bottom hem.

1355 Ladies: S-2XL List Price 17.90 (Upcharge for 2XL)

1356 Girls: S-L List Price 16.30

**LADIES INFERNO JERSEY****1290****1291**

92% polyester/8% spandex wicking pinhole mesh • Ladies' fit • Heat sealed label • Self-fabric V-neck collar • Contrast color triangular side panels with

white piping • Racerback styling.

1290 Ladies: S-2XL List Price 17.90 (Upcharge for 2XL)

1291 Girls: S-L List Price 15.90





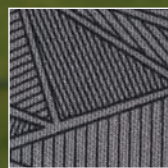
1714

1240
PG. 44



1722

RACERBACK



ULTRA GEO
PRINT INSERT

828
PG. 44

LADIES BLOCK OUT JERSEY

1714



100% polyester wicking knit • Ladies' fit • Pad print label
• Self-fabric V-neck collar • Contrast color side panels.

1714

Ladies: S-2XL

List Price 15.90 (Upcharge for 2XL)



BLACK/
WHITE



RED/
WHITE



ROYAL/
WHITE



NAVY/
WHITE



LIME/
SLATE



SLATE/
WHITE



POWER
YELLOW/
SLATE



POWER
BLUE/
SLATE



POWER
ORANGE/
SLATE

MOISTURE MANAGEMENT JERSEYS

**Wicks moisture away
from the body**

LADIES FAST BREAK RACERBACK JERSEY

1722

1723



100% polyester wicking knit • 100% polyester printed
wicking knit side panel • Ladies' fit • Pad print label
• Self-fabric mitered V-neck collar • Contrast color
printed side panels • Racerback styling.

1722

Ladies: S-2XL

List Price 15.90 (Upcharge for 2XL)

1723

Girls: S-L

List Price 13.90



BLACK/
GRAPHITE
BLACK
PRINT



WHITE/
GRAPHITE
BLACK
PRINT



RED/
GRAPHITE
BLACK
PRINT



ROYAL/
GRAPHITE
BLACK
PRINT



NAVY/
GRAPHITE
BLACK
PRINT



GRAPHITE/
GRAPHITE
BLACK
PRINT

**RACERBACK**

LADIES WINNING STREAK RACERBACK JERSEY

1182**1183**

100% polyester wicking knit • 92% polyester/8% spandex
pinhole mesh side inserts • Ladies' fit • Heat sealed label
• Self-fabric mitered V-neck collar • Contrast color stripes
on sides • Racerback styling.

1182**Ladies: S-2XL****List Price 17.50 (Upcharge for 2XL)****1183****Girls: S-L****List Price 15.50**BLACK/
WHITEWHITE/
WHITERED/
WHITEROYAL/
WHITECOLUMBIA
BLUE/
WHITENAVY/
WHITEORANGE/
WHITEMAROON/
WHITEPURPLE/
WHITEDARK
GREEN/
WHITEGRAPHITE/
WHITE

LADIES WICKING MESH SLEEVELESS JERSEY

525**526**

100% polyester wicking mesh • Ladies' fit
• Heat sealed label • Rib-knit V-neck collar.

525**Ladies: S-2XL****List Price 13.70 (Upcharge for 2XL)****526****Girls: S-L****List Price 13.10**

BLACK



WHITE



RED



ROYAL

COLUMBIA
BLUE

NAVY



ORANGE



MAROON



GOLD



PURPLE

DARK
GREENSILVER
GREY

PINK



LADIES SLEEVELESS V-NECK POLY/COTTON JERSEY

556**557**

50% polyester/50% cotton jersey knit • Ladies' fit
• Rib-knit V-neck collar and armholes.

556**Ladies: S-2XL****List Price 13.00 (Upcharge for 2XL)****557****Girls: S-L****List Price 11.40**

BLACK



WHITE



RED



ROYAL



NAVY



ORANGE



MAROON

LIGHT
BLUE

GOLD



PURPLE



KELLY

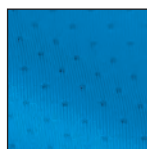
DARK
GREENATHLETIC
HEATHERLIGHT
PINK

TEAL



VALUE PRICE

PINHOLE MESH
PERFORMANCE FABRIC



COORDINATING ADULT/YOUTH, STYLE 788|789 PG. 23

LADIES LONG SLEEVE WICKING T-SHIRT

1788

1789



100% polyester wicking knit • Ladies' fit • Pad print label
• Self-fabric V-neck collar • Set-in sleeves.

1788

Ladies: XS-3XL

Call for pricing

1789

Girls: S-L

Call for pricing



LADIES ASSIST JERSEY

1330

1331



92% polyester/8% spandex wicking pinhole mesh
• Ladies' fit • Heat sealed label • Self-fabric V-neck collar • Raglan sleeves.

1330

Ladies: S-2XL

List Price 19.90 (Upcharge for 2XL)

1331

Girls: S-L

List Price 17.90



4-WAY STRETCH FABRIC

LADIES QUANTUM PULLOVER

3790



90% polyester/10% spandex 4-way stretch woven fabric
• 100% polyester pinhole mesh insert • Ladies' fit • 4-way stretch property provides ease of movement • Half-zip

pullover • Contrast mesh insert, piping, sleeve stripe, and hem facing • Dropped tail • Set-in sleeves • Front pockets • Half elastic cuffs • Open bottom.

3790

Ladies: XS-2XL

List Price 42.80 (Upcharge for 2XL)



3790



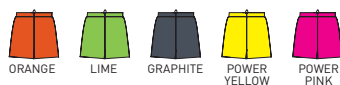
LADIES INFERNO SHORT

1292 1293



92% polyester/8% spandex wicking pinhole mesh • Ladies' fit • Heat sealed label • Covered elastic waistband with inside drawcord • 5-inch inseam • Girls inseam graded.

1292 Ladies: S-2XL List Price 13.90 (Upcharge for 2XL)
1293 Girls: S-L List Price 13.10



BACK



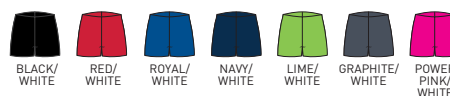
LADIES SHOCKWAVE SHORT

962 963



100% polyester propelit micromesh • Wicks moisture • Pad print label • Ladies fit • Covered elastic waistband with inside drawcord • Contrast color piping on back yoke • 5-inch inseam • Girls inseam graded.

962 Ladies: S-2XL List Price 17.90 (Upcharge for 2XL)
963 Girls: S-L List Price 15.90



LADIES WICKING MESH SHORT

960 961



100% polyester wicking mesh • Ladies' fit • Covered elastic waistband with inside drawcord • 5-inch inseam • Girls inseam graded.

960 Ladies: S-2XL List Price 13.90 (Upcharge for 2XL)
961 Girls: S-L List Price 12.90



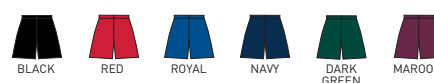
LADIES TRICOT MESH SHORT/TRICOT LINED

858 859



Outer layer of 100% polyester tricot mesh • Inner layer of 100% polyester tricot lining • Ladies' fit • Covered elastic waistband with inside drawcord • 5-inch inseam • Girls inseam graded.

858 Ladies: S-2XL List Price 11.00 (Upcharge for 2XL)
859 Girls: S-L List Price 9.90



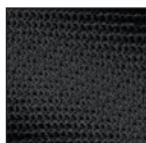
1248



1240



828



INSIDE MESH BACK

LADIES LOW RISE
COLLEGIATE PANT

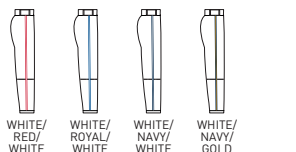
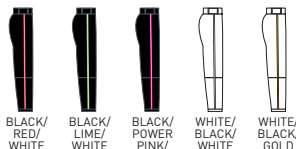
1248

1249

F 15 ounce 100% polyester double knit with inner mesh layer • Ladies' fit • Low rise • Elastic waistband with inside drawcord • Six pro-style belt loops • Two-snap closure • Brass zipper fly • Two set-in double welt back pockets • ³/₈-inch two-color braid on side seam • Reinforced knees • Elastic cuffs • Graded inseam.

1248 Ladies: S-2XL List Price 35.90
(Upcharge for 2XL)

1249 Girls: S-L List Price 33.90

LADIES LOW RISE
HOMERUN PANT

1240

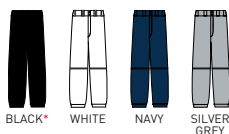
1241

F 14 ounce 100% polyester double knit • Ladies' fit • Low rise • Elastic waistband with inside drawcord • Belt loops • Two-snap closure • Brass zipper fly • Two set-in double welt back pockets • Reinforced knees • Elastic cuffs • Graded inseam.

1240 Ladies: XS-3XL List Price 29.90
(Upcharge for 2XL-3XL)

1241 Girls: S-L List Price 27.90

*Available in 3XL.

LADIES LOW RISE
SOFTBALL PANT

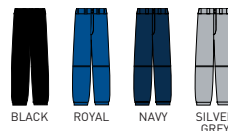
828

829

F 14 ounce 100% polyester double knit • Ladies' fit • Low rise • Elastic waistband with inside drawcord • Two-snap closure • Brass zipper fly • Two set-in double welt back pockets (one on girls) • Reinforced knees • Elastic cuffs • Graded inseam.

828 Ladies: S-2XL List Price 27.90
(Upcharge for 2XL)

829 Girls: S-L List Price 25.90



100% POLYESTER DOUBLE KNIT PANTS

Features reinforced knees for added durability

1242



1245



1340



LADIES OUTFIELD PANT

1242

1243

F 14 ounce 100% polyester double knit • Ladies' fit • Low rise • Elastic waistband with inside drawcord • Six pro-style belt loops • Two-snap closure • Brass zipper fly • Two set-in double welt back pockets • Contrast color side inserts with contrast color piping • Reinforced knees • Full Length • Graded Inseam.

1242 Ladies: S-2XL List Price 31.90
(Upcharge for 2XL)

1243 Girls: S-L List Price 29.90



BLACK/BLACK/WHITE BLACK/RED/WHITE BLACK/LIME/WHITE BLACK/GRAPHITE/WHITE BLACK/POWER YELLOW/WHITE BLACK/POWER PINK/WHITE

LADIES LOW RISE DRIVE PANT

1245

1246

F 14 ounce 100% polyester double knit • Ladies' fit • Low rise • Elastic waistband with inside drawcord • Two-snap closure • Brass zipper fly • Two set-in double welt back pockets • Contrast color bottom insert and piping at side seams • Reinforced knees • Elastic cuffs • Knee length with graded inseam.

1245 Ladies: S-2XL List Price 27.20
(Upcharge for 2XL)

1246 Girls: S-L List Price 25.20



BLACK/BLACK BLACK/WHITE NAVY/WHITE RED/WHITE ROYAL/WHITE SILVER GREY/SILVER GREY

LADIES COMET PANT

1340

1341

F 14 ounce 100% polyester double knit • 90% polyester/10% spandex inserts • Ladies' fit • Low rise • Elastic waistband with inside drawcord • Six pro-style belt loops • Two-snap closure • Brass zipper fly • Contrast two color poly/spandex side inserts for better fit • Reinforced knees • Knee length with graded inseam • Elastic cuffs.

1340 Ladies: S-2XL List Price 29.90
(Upcharge for 2XL)

1341 Girls: S-L List Price 27.90

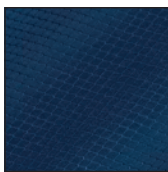


BLACK/RED/WHITE BLACK/ORANGE/WHITE BLACK/GOLD/WHITE BLACK/GRAPHITE/WHITE BLACK/LIME/WHITE



BLACK/POWER PINK/WHITE RED/BLACK/WHITE ROYAL/RED/WHITE NAVY/GOLD/WHITE

DIAMOND TECH



To see our full offering of
Outerwear/Warmups visit us online
at www.augustasportswear.com

DRIVE PULLOVER

3720

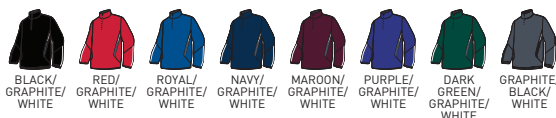


Outer shell of 100% polyester diamond tech • Lined with 100% polyester taffeta • Half-zip pullover style • Contrast color front and sleeve inserts • Set-in sleeves • Front pockets • Half-elastic cuffs • Open bottom.

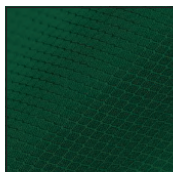
3720

Adult: XS-3XL

List Price 41.90 (Upcharge for 2XL-3XL)



DIAMOND TECH



ROAR PULLOVER

Available in 16 colors

ROAR PULLOVER

3745

3746



Outer shell of 100% polyester diamond tech • Lined with 100% polyester taffeta • Rib knit V-neck collar • Contrast color shoulder and side inserts with contrast piping • Set-in sleeves • Front pockets • Elastic cuffs • Open bottom with elastic drawcord adjustable through pocket.

3745

Adult: S-4XL

List Price 38.50 (Upcharge for 2XL-4XL)

3746

Youth: S-L

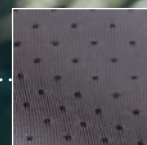
List Price 36.50



6290
PG. 59



OPEN BOTTOM WITH
ADJUSTABLE ELASTIC
DRAWCORD HIDDEN IN
POCKET



PINHOLE MESH
INSERTS

3789

3792

1470

OUTERWEAR/WARMUPS

QUANTUM SHORT SLEEVE PULLOVER

3788

3789



- 90% polyester/10% spandex 4-way stretch woven fabric
- 4-way stretch property provides ease of movement
- Half-zip pullover style • Contrast piping and sleeve insert
- Raglan sleeves • Front pockets • Open bottom with adjustable elastic drawcord hidden in pocket.

3788 Adult: XS-4XL List Price 42.80 (Upcharge for 2XL-4XL)

3789 Youth: S-L List Price 40.70

***Available in Adult sizes only.**



DOPPLER PULLOVER

3792



- 90% polyester/10% spandex 4-way stretch woven fabric
- 100% polyester pinhole mesh inserts • 4-way stretch property provides ease of movement • Half-zip pullover style • Contrasting color shoulder insert and bottom of sleeve • Contrast mesh shoulder stripe and underarm insert • Mesh underarm provides ventilation • Raglan sleeves • Front pockets with contrasting color mesh pocket bag • Half elastic cuffs • Open bottom with adjustable elastic drawcord hidden in pocket.

3792 Adult: S-2XL List Price 43.90 (Upcharge for 2XL)



CLASSIC LOOKS FOR BASEBALL



SATIN BASEBALL JACKET/STRIPED TRIM

3610

3611



Outer shell of 100% nylon satin • Lined with 100% polyester brushed tricot
• Snap front • Striped rib-knit collar, cuffs and bottom band • Raglan sleeves
• Reinforced slash front pockets.

3610

Adult: S-3XL

List Price 40.50 (Upcharge for 2XL-3XL)

3611

Youth: S-L

List Price 39.50



BLACK/
WHITE



RED/
WHITE



ROYAL/
WHITE



NAVY/
WHITE



SATIN BASEBALL JACKET/SOLID TRIM

3600



Outer shell of 100% nylon satin • Lined with 100% polyester brushed tricot
• Snap front • Rib-knit collar, cuffs and bottom band • Raglan sleeves
• Reinforced slash front pockets.

3600

Adult: S-5XL

List Price 40.50 (Upcharge for 2XL-5XL)



BLACK



WATER-RESISTANT PULLOVERS

Dry, warm and comfortable
with breathable lining

MICRO POLY WINDSHIRT/LINED

3415



Outer shell of 100% micro polyester • Lined with 100% polyester taffeta
• Rib-knit V-neck collar, cuffs and bottom band • Set-in sleeves • Side
seam pockets.

3415

Adult: S-4XL

List Price 27.90 (Upcharge for 2XL-4XL)



BLACK



RED



ROYAL



NAVY



1509
PG. 21



5542

FLEECE

NEW EDGE PULLOVER

Contrast color three-needle stitching accent on shoulders, sleeves and body

EDGE PULLOVER

5542

5543



100% polyester performance wicking

fleece • Crew neck with front detail

• Set-in sleeves • Contrast color

three-needle stitching accent on shoulders, sleeves, and body

• Curved hem bottom.

5542

Adult: S-3XL

List Price 31.00

(Upcharge for 2XL-3XL)

5543

Youth: S-L

List Price 29.00



BLACK/
WHITE



RED/
WHITE



ROYAL/
WHITE



NAVY/
WHITE



GRAPHITE/
WHITE

PLAY LIKE THE PROS

The Striped Up Hoody
wicks away moisture
while you play

STRIPED UP HOODY

5518

5519



100% polyester performance wicking fleece • 100% polyester propelit micromesh hood lining and pockets • Contrast color propelit micromesh hood lining and pockets • Contrast color side panel with body color applied stripe • Set-in sleeves with self-fabric cuffs • Front welt pockets with an interior kangaroo pocket.

5518 Adult: S-3XL List Price ~~Was 37.50~~ Now 35.90
(Upcharge for 2XL-3XL)

5519 Youth: S-L List Price ~~Was 35.50~~ Now 31.90



AVAILABLE IN 15 COLORS

ZEST HOODY

5523

5524



100% polyester performance wicking fleece • Contrast color self-lined hood • Drawcord in hood on Adult sizes only • Contrast color sleeve inserts and piping • Set-in sleeves with self-fabric cuffs • Front pouch pocket • Open bottom.

5523 Adult: S-3XL List Price 39.90 (Upcharge for 2XL-3XL)

5524 Youth: S-L List Price ~~Was 37.90~~ Now 35.90



MOD CAMO HOODY

Printed wicking knit features Mod Camo print



MOD CAMO HOODY

5538

5539



100% polyester performance wicking fleece • 100% polyester printed wicking knit side inserts, piping, and hood lining features Mod Camo print • Roller printed for easy embellishment reduces chance of dye migration • Drawcord in hood on Adult sizes only • Raglan sleeves • Self-fabric cuffs • Front pocket with an interior kangaroo pocket.

5538 Adult: S-3XL List Price 39.90

(Upcharge for 2XL-3XL)

5539 Youth: M-L List Price ~~Was 37.90~~ Now 35.90



BLACK/BLACK MOD RED/RED MOD ROYAL/ROYAL MOD NAVY/NAVY MOD



ORANGE/ORANGE MOD MAROON/MAROON MOD DARK GREEN/DARK GREEN MOD GRAPHITE/BLACK MOD



BACK

5538

1475

PG. 24

FLEECE



SLEET HOODY

5532
5533


100% polyester performance wicking fleece • 100% polyester propelit micromesh hood lining • Contrast color propelit micromesh hood lining • Contrast color stitching on pocket and hood • Raglan sleeves • Self-fabric cuffs • Front pocket with an exterior kangaroo pocket.

5532

Adult: S-3XL

List Price 39.90 (Upcharge for 2XL-3XL)

5533

Youth: M-L

 List Price ~~Was 37.90~~ Now 35.90


WICKING FLEECE HOODED SWEATSHIRT

5505
5506


100% polyester performance wicking fleece • Self-lined hood • Drawcord in hood on Adult sizes only • Set-in sleeves • Front pouch pocket • Self-fabric cuffs and bottom band.

5505

Adult: S-4XL

 List Price ~~Was 37.90~~ Now 33.90
(Upcharge for 2XL-4XL)

5506

Youth: S-L

 List Price ~~Was 37.00~~ Now 29.90


FANATIC HOODED SWEATSHIRT

5527


100% polyester performance wicking fleece • Contrast color self-lined hood • Drawcord in hood on Adult sizes S-3XL only • Contrast color front and sleeve inserts • Raglan sleeves • Self-fabric cuffs • Front pouch pocket • Open bottom.

5527

Adult: XS-3XL

 List Price ~~Was 39.90~~ Now 35.90
(Upcharge for 2XL-3XL)


VOLT HOODY

5460 5461



9 ounce 50% cotton/50% polyester smooth athletic fleece • Contrast color lined hood • Contrast color sleeve inserts • Drawcord in hood on Adult sizes only • Raglan sleeves • Double-needle coverstitched bottom band • Front pouch pocket • Rib-knit with cuffs and bottom band.

5460 Adult: S-3XL List Price ~~Was 37.50~~ Now 35.90
(Upcharge for 2XL-3XL)

5461 Youth: S-L List Price ~~Was 33.50~~ Now 31.90



CIRCUIT HOODY

5450 5451



9 ounce 50% cotton/50% polyester smooth athletic fleece • Contrast color lined hood, front and sleeve inserts • Drawcord in hood on Adult sizes only • Raglan sleeves • Front pouch pocket • Rib-knit with cuffs and bottom band.

5450 Adult: S-3XL List Price ~~Was 36.30~~ Now 33.90
(Upcharge for 2XL-3XL)

5451 Youth: S-L List Price ~~Was 32.30~~ Now 29.90





STIRRUP

6014
6013
6012

91% nylon/5% polyester/4% elastic • Knee length
• Knit in elastic cuff • Stirrup cut length 7".

6014 Adult: 19"

Call for pricing

6013 Intermediate: 17"

Call for pricing

6012 Youth: 15"

Call for pricing



BASEBALL STIRRUP SOCKS

6015
6010
6011

43% polyester/35% cotton/16% acrylic/6% elastic • Knee-length two-in-one stirrup sock
• White sock with color stripe knitted-in • Cushioned toe, sole and heel • Adult has knit-in heel and toe • Intermediate and Youth are tube socks.

6015 Adult: 10-13

Call for pricing

6010 Intermediate: 9-11

Call for pricing

6011 Youth: 7-9

Call for pricing



WICKING ATHLETIC SOCKS

6085
6086
6087


70% lucool wicking polyester/13% nylon/12% elastic/5% spandex
• Knee-length tube sock • Cushioned toe, sole and heel.

6085 Adult: 10-13

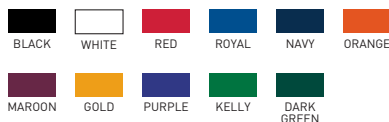
Call for pricing

6086 Intermediate: 9-11

Call for pricing

6087 Youth: 7-9

Call for pricing



GAME SOCKS

6025
6020
6021

91% nylon/5% polyester/4% elastic • Tube sock • Slightly below the knee.

6025 Adult: 10-13

Call for pricing

6020 Intermediate: 9-11

Call for pricing

6021 Youth: 7-9

Call for pricing



ARCH AND
ANKLE SUPPORT

HEEL/TOE
CONSTRUCTION



SOLID SLEEVE

2610 2611



84% polyester/16% spandex knit

• Odor-resistant • Wicks moisture

• Ultra tight fit • Flatlock stitching

• Top hem with elastic to secure in place.

2610 Adult: S/M-L/XL Call for pricing
2611 Youth Call for pricing



BLACK WHITE RED ROYAL NAVY GRAPHITE

ELITE MULTI-SPORT SOCK

6007 6006 6005



75% acrylic/15% polyester/4% spandex/4% elastic/2% nylon • Wicks moisture
• Knee length • Heel/toe construction • Arch and ankle support • Lightweight
microfiber yarns offer support while remaining soft to the touch.

6007 Adult: 10-13 Call for pricing
6006 Intermediate: 9-11 Call for pricing
6005 Youth: 7-9 Call for pricing



VEGAS
GOLD



GRAPHITE



BLACK



WHITE



RED



ROYAL



COLUMBIA
BLUE



NAVY



ORANGE



MAROON



GOLD



PURPLE



DARK
GREEN



LIME



POWER
YELLOW



POWER
PINK

ATHLETIC SOCKS

6028 6026 6027

80% acrylic/14% nylon/6% elastic • Knee-length tube sock • Fully cushioned foot.

6028 Adult: 10-13 Call for pricing
6026 Intermediate: 9-11 Call for pricing
6027 Youth: 7-9 Call for pricing



VEGAS
GOLD



GRAPHITE



BLACK



WHITE



RED



ROYAL



COLUMBIA
BLUE



NAVY



ORANGE



MAROON



GOLD



PURPLE



KELLY



DARK
GREEN



SLIVER
GREY



TEAL



LIME



POWER
YELLOW



POWER
PINK

DIGI CAMO SLEEVE

2612 2613



84% polyester/16% spandex knit

• Roller printed to reduce chance

of dye migration • Odor-resistant

• Wicks moisture • Ultra tight fit • Flatlock stitching • Top hem with
elastic to secure in place.

2612 Adult: S/M-L/XL Call for pricing
2613 Youth Call for pricing



WHITE
DIGI



FLEXFIT CONTENDER CAP

6305
6306

FLEXFIT®
The One & Only Original

97% polyester/3% spandex wicking stretch mesh • Wicks moisture • Six panels • Low profile pro-style crown • Contrast color front two panels and bill • White back side panels and inserts on bill • Matching eyelets • Pre-curved bill • Patented Flexfit stretch for comfortable fit.

6305 Adult: S/M (6¾ - 7¼)
L/XL (7½ - 7¾)

Call for pricing

6306 Youth: (6½ - 7)

Call for pricing



BLACK/
WHITE



RED/
WHITE



ROYAL/
WHITE



NAVY/
WHITE



GRAPHITE/
WHITE



FLEXFIT ZONE CAP

6310
6311

FLEXFIT®
The One & Only Original

97% polyester/3% spandex wicking stretch mesh • Wicks moisture • Six panels • Low profile pro-style crown • Contrast color triangular side inserts • Matching eyelets • Pre-curved bill • Patented Flexfit stretch for comfortable fit.

6310 Adult: S/M (6¾ - 7¼)
L/XL (7½ - 7¾)

Call for pricing

6311 Youth: (6½ - 7)

Call for pricing



BLACK/
WHITE



BLACK/
GOLD



BLACK/
VEGAS
GOLD



RED/
BLACK



RED/
WHITE



ROYAL/
WHITE



ROYAL/
ORANGE



ROYAL/
GOLD



COLUMBIA
BLUE/
WHITE



NAVY/
WHITE



NAVY/
GOLD



ORANGE/
WHITE



MAROON/
WHITE



PURPLE/
WHITE



PURPLE/
GOLD



KELLY/
WHITE



DARK
GREEN/
WHITE



DARK
GREEN/
GOLD



VEGAS
GOLD/
WHITE



GRAPHITE/
WHITE



FLEXFIT VAPOR CAP

6300
6301

FLEXFIT®
The One & Only Original

84% nylon/14% cotton/2% spandex • Breathable • Six panels • Mid profile pro-style crown • Twill front panel with airmesh sides and back • Matching eyelets • Pre-curved bill • Patented Flexfit stretch for comfortable fit.

6300 Adult: S/M (6¾ - 7¼)
L/XL (7½ - 7¾)

Call for pricing

6301 Youth: (6½ - 7)

Call for pricing



BLACK/
BLACK



BLACK/
WHITE



WHITE/
WHITE



RED/
WHITE



RED/
RED



ROYAL/
WHITE



ROYAL/
ROYAL



NAVY/
WHITE



NAVY/
NAVY



ORANGE/
WHITE



MAROON/
WHITE



GOLD/
WHITE



PURPLE/
WHITE



KELLY/
WHITE



DARK
GREEN/
WHITE



6208



DIGI CAMO COTTON TWILL CAP

6208

6209

100% cotton twill with Digi Camo print • Six panels • Low profile pro-style crown • Fused buckram-backed front panels • Graphite eyelets • Pre-curved bill • Hook and loop fastener.

6208

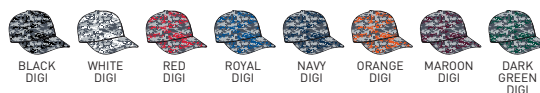
Adult

Call for pricing

6209

Youth

Call for pricing



SIX-PANEL COTTON TWILL LOW-PROFILE CAP

6204

6206

100% cotton twill • Six panels • Low profile pro-style crown • Fused buckram-backed front panels • Matching eyelets • Pre-curved bill • Plastic snap size adjuster.

6204

Adult

Call for pricing

6206

Youth

Call for pricing



FIVE-PANEL COTTON TWILL CAP

6202

6207

100% cotton twill • Five panels • Low profile pro-style crown • Fused buckram-backed front panel • Matching eyelets • Plastic snap size adjuster.

6202

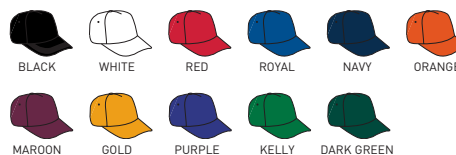
Adult

Call for pricing

6207

Youth

Call for pricing





FLAT BILL
DESIGN

SPORT FLEX ATHLETIC MESH CAP

6232

6233



100% polyester athletic mesh with tricot backing • Unique, comfortable stretch fit • Six panels • Low profile pro-style crown • Fused buckram-backed front panels • Matching eyelets • Pre-curved bill with contrast grey undervisor.

6232 Adult: S/M (6¼ to 7½) • L/XL (7¼ to 7½)
6233 Youth: M/L (6½ to 6¾)

Call for pricing
Call for pricing



ATHLETIC MESH VISOR

6227

6228

100% polyester athletic mesh with tricot backing • Three panels • Sweatband folds down for easy embellishment • Pre-curved bill • Hook and loop fastener.

6227 Adult
6228 Youth

Call for pricing
Call for pricing



ATHLETIC MESH CAP

6235

6236

100% polyester athletic mesh with tricot backing • Six panels • Low profile pro-style crown • Fused buckram-backed front panels • Matching eyelets • Pre-curved bill with contrast grey undervisor • Hook and loop fastener.

6235 Adult
6236 Youth

Call for pricing
Call for pricing



ATHLETIC MESH FLAT BILL CAP

6255

6256

100% polyester athletic mesh with tricot backing • Six panels • Mid to low profile crown • Fused buckram-backed front panels • Matching eyelets • Flat bill • Plastic snap size adjuster.

6255 Adult
6256 Youth

Call for pricing
Call for pricing



TRI-COLOR CAPS

For those times when two colors just won't do



SLIDER CAP

6282

6283

100% polyester athletic mesh with tricot backing • Six panels • Low profile pro-style crown • Fused buckram-backed front panels • Contrast color inserts on sides of hat and bill • Matching eyelets • Pre-curved bill • Hook and loop fastener.

6282

Adult

Call for pricing

6283

Youth

Call for pricing



BLACK/
ORANGE/
WHITE



BLACK/
GOLD/
WHITE



BLACK/
LIME/
WHITE



BLACK/
GRAPHITE/
WHITE



RED/
BLACK/
WHITE



ROYAL/
BLACK/
WHITE



ROYAL/
RED/
WHITE



ROYAL/
GOLD/
WHITE



NAVY/
GOLD/
WHITE



NAVY/
GRAPHITE/
WHITE



MAROON/
BLACK/
WHITE



PURPLE/
BLACK/
WHITE



DARK
GREEN/
BLACK/
WHITE



CHANGE UP CAP

6290

6291

100% polyester athletic mesh with tricot backing • Six panels • Low profile pro-style crown • Fused buckram-backed front panels • Contrasting color fabric on 2 front panels • Contrasting color inserts on side and front bill • Matching eyelets • Pre-curved bill • Hook and loop fastener.

6290

Adult

Call for pricing

6291

Youth

Call for pricing



BLACK/
BLACK/
WHITE



BLACK/
BLACK/
LIME



BLACK/
BLACK/
SILVER
GREY



BLACK/
ORANGE/
WHITE



BLACK/
GOLD/
WHITE



BLACK/
RED/
WHITE



RED/
RED/
WHITE



ROYAL/
ROYAL/
WHITE



ROYAL/
RED/
WHITE



ROYAL/
GOLD/
WHITE



NAVY/
NAVY/
WHITE



NAVY/
RED/
WHITE



NAVY/
GOLD/
WHITE



ORANGE/
ORANGE/
WHITE



MAROON/
MAROON/
WHITE



PURPLE/
PURPLE/
WHITE



DARK
GREEN/
DARK
GREEN/
WHITE



GRAPHITE/
GRAPHITE/
WHITE



FORCE CAP

6280 6281

100% polyester athletic mesh with tricot backing • Six panels • Low profile pro-style crown • Fused buckram-backed front panels • Contrast color piping on front crown and bill • Contrast color inserts on sides of bill • Matching eyelets • Pre-curved bill • Hook and loop fastener.

6280

Adult

Call for pricing

6281

Youth

Call for pricing



BLACK/
WHITE



RED/
WHITE



ROYAL/
WHITE



NAVY/
WHITE



ORANGE/
WHITE



MAROON/
WHITE



PURPLE/
WHITE



DARK GREEN/
WHITE



FORCE VISOR

6285 6286

100% polyester athletic mesh with tricot backing • Three panels • Contrasting color piping on front and bill • Contrasting color inserts on sides of bill • Sweatband folds down for easy embellishment • Pre-curved bill • Hook and loop fastener.

6285

Adult

Call for pricing

6286

Youth

Call for pricing



BLACK/
WHITE



BLACK/
ORANGE



BLACK/
GOLD



RED/
BLACK



RED/
WHITE



ROYAL/
WHITE



COLUMBIA
BLUE/
WHITE



NAVY/
WHITE



NAVY/
GOLD



MAROON/
WHITE



PURPLE/
GOLD



DARK
GREEN/
WHITE



DARK
GREEN/
GOLD



SPORT FLEX THREE-COLOR ATHLETIC MESH CAP

6247



100% polyester athletic mesh with tricot backing • Unique, comfortable stretch fit

• Six panels • Low profile pro-style crown • Fused buckram-backed front panels

• Contrasting color front, back and side panels • Matching eyelets • Two-color pre-curved bill with contrast grey undervisor.

6247

Adult: S/M (6¾ TO 7½)
L/XL (7¼ TO 7¾)

Call for pricing



RED/
BLACK/
WHITE



RED/
NAVY/
WHITE



ROYAL/
BLACK/
WHITE



ORANGE/
BLACK/
WHITE



MAROON/
BLACK/
WHITE



GOLD/
BLACK/
WHITE



PURPLE/
BLACK/
WHITE



DARK
GREEN/
BLACK/
WHITE



SPORT FLEX COLOR BLOCK ATHLETIC MESH CAP

6234



100% polyester athletic mesh with tricot backing • Unique, comfortable stretch fit

• Six panels • Low profile pro-style crown • Fused buckram-backed front panels

• Contrasting color side insert and bill edge • Matching eyelets • Two-color pre-curved bill with contrast grey undervisor.

6234

Adult: S/M (6¾ TO 7½)
L/XL 7¼ TO 7¾

Call for pricing



BLACK/
WHITE



RED/
WHITE



ROYAL/
WHITE



COLUMBIA
BLUE/
WHITE



NAVY/
WHITE



ORANGE/
WHITE



MAROON/
WHITE



GOLD/
WHITE



PURPLE/
WHITE



DARK
GREEN/
WHITE



ADJUSTABLE WICKING MESH EDGE CAP

6270

6271



100% polyester textured wicking fabric • Six panels • Low profile pro-style crown • Fused buckram-backed front panels • Matching eyelets • White dazle inserts on the sides of the crown and middle of bill • Pre-curved bill • Hook and loop fastener.

6270

Adult

Call for pricing

6271

Youth

Call for pricing



BLACK/
WHITE



WHITE/
BLACK



RED/
WHITE



ROYAL/
WHITE



NAVY/
WHITE



ORANGE/
WHITE



MAROON/
WHITE



GOLD/
WHITE



PURPLE/
WHITE



DARK GREEN/
WHITE



ADJUSTABLE WICKING MESH EDGE VISOR

6275

6276



100% polyester textured wicking fabric • Three panels • Sweatband folds down for easy embellishment • White dazle inserts on the sides of the front panel and middle of bill • Pre-curved bill • Hook and loop fastener.

6275

Adult

Call for pricing

6276

Youth

Call for pricing



BLACK/
WHITE



WHITE/
BLACK



RED/
WHITE



ROYAL/
WHITE



NAVY/
WHITE



ORANGE/
WHITE



MAROON/
WHITE



GOLD/
WHITE



PURPLE/
WHITE



DARK GREEN/
WHITE



ADJUSTABLE WICKING MESH CAP

6265

6266



100% polyester textured wicking fabric • Six panels • Low profile pro-style crown • Fused buckram-backed front panels • Matching eyelets • Pre-curved bill • Hook and loop fastener.

6265

Adult

Call for pricing

6266

Youth

Call for pricing



BLACK



WHITE



RED



ROYAL



NAVY



ORANGE



MAROON



GOLD



PURPLE



KELLY



DARK GREEN



ADJUSTABLE WICKING MESH VISOR

6267

6268



100% polyester textured wicking fabric • Three panels • Sweatband folds down for easy embellishment • Pre-curved bill • Hook and loop fastener.

6267

Adult

Call for pricing

6268

Youth

Call for pricing



BLACK



WHITE



RED



ROYAL



NAVY



ORANGE



MAROON



GOLD



PURPLE



KELLY



DARK GREEN



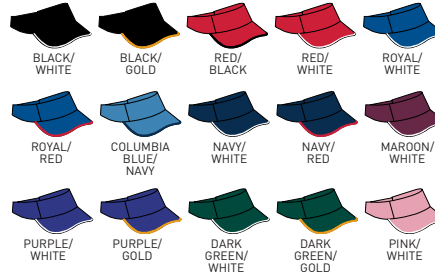
ATHLETIC MESH TWO-COLOR VISOR

6223
6224

100% polyester athletic mesh with tricot backing • Three panels • Contrasting color bill edge
• Sweatband folds down for easy embellishment • Pre-curved bill • Hook and loop fastener.

6223 Adult
6224 Youth

Call for pricing
Call for pricing



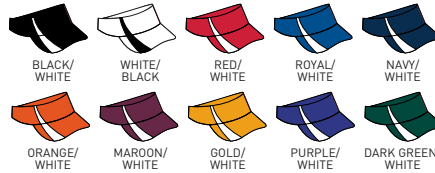
ADJUSTABLE WICKING MESH TWO-COLOR VISOR

6260
6261


100% polyester textured wicking fabric • Three panels • Sweatband folds down for easy embellishment • White insert on front panel and bill • Pre-curved bill • Hook and loop fastener.

6260 Adult
6261 Youth

Call for pricing
Call for pricing



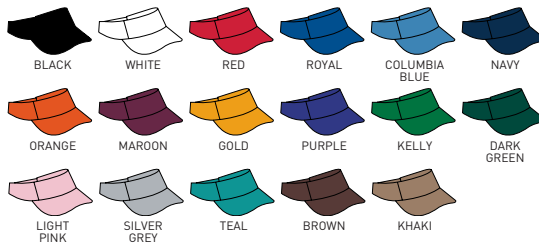
SPORT TWILL VISOR

6225
6226

100% pre-washed cotton twill • Three panels • Self-fabric sweatband folds down for easy embellishment • Pre-curved bill • Hook and loop fastener.

6225 Adult
6226 Youth

Call for pricing
Call for pricing



EXPANDABLE BAT BACKPACK

411

600-denier polyester with PVC coating • Ventilated zippered main compartment with two zipper pulls • Two bat holders at sides with dual elastic drawcord and cordlocks • Metal fence hooks • Zippered front compartment with two zipper pulls • Zippered inside pocket • Expandable separate zippered lower compartment with two zipper pulls • Padded back for support and comfort • Padded shoulder straps with adjustable side tabs • Web handle at top of backpack • Plastic hardware • Durable vinyl on bottom of backpack to retain shape • Bottom board attached to inside of backpack.

411 13"W x 25"H x 10"D Call for pricing

BLACK



REMOVABLE POCKET
FOR EASY
EMBELLISHMENT



1767

STYLE IS IN THE BAG

Carry your gear in spirited style with versatile bags

DUGOUT BACKPACK

1767

600-denier polyester with PVC coating, shiny hexagon patterned polyester inserts • Zippered main compartments with two zipper pulls • Side mesh pockets and elastic hold two bats • Zippered top pocket with J fence hook • Zippered front pocket removes for easy embellishment • Zippered inside pocket • Padded back for support and comfort • Padded shoulder straps with adjustable side tabs • Web handle at top of backpack • Plastic hardware • Durable vinyl on bottom of backpack to retain shape.

1767 18½"W x 13½"H x 6"D Call for pricing

