



2013

track  
& field

cross country





preselected uniform builder  
& custom flyer designer

# marketing tools

Save TIME with your marketing tools. Quickly and easily create VIRTUAL SAMPLE flyers.

**START TODAY!**

[www.augustasportswear.com/marketingtools](http://www.augustasportswear.com/marketingtools)

## In a Few EASY Steps

- choose styles
- select color
- decorate
- personalize
- complete order form
- save, print or email



**MOISTURE MANAGEMENT**  
fabric wicks moisture away  
keeping the body cool and dry



**4-WAY STRETCH**  
stretch properties allow  
for increased mobility



**ODOR RESISTANT**



**FITTED**



**LOOSE  
FIT**

**Dye Migration.** Augusta Sportswear® cannot be held responsible for ink migration on polyester styles that can be attributed to poor ink quality or processing at temperatures exceeding those recommended by the ink manufacturer. **Dyeing.** Because of the variability of the dyeing process, we cannot guarantee perfect continuity of shade across all styles or from one order to the next. Jackets and pants are cut and offered for sale as separates, not as sets. **Decorating.** All embellishment is for photography and catalog purposes only. All styles are sold blank with no decorations applied. Augusta Sportswear® does not offer decorating services.





preselected  
uniform  
builder

# custom flyer designer





NEW

new  
products

outfit  
your team.

one of the largest offerings of  
ladies & youth specific styles



332|335 – pg. 5



334|337 – pg. 5



1282|1283 – pg. 9



1267|1268 – pg. 11



4750 – pg. 13



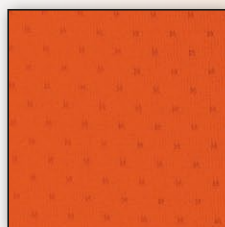
4752 – pg. 13



1740 – pg. 15



1745 – pg. 15



PINHOLE MESH pg 5



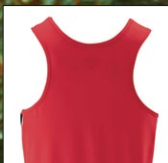
Innovative Pinhole Mesh  
Performance Fabric provides  
unparalleled functionality with high  
performance features and benefits.

## benefits

- extremely soft feel
- full coverage breathability
- lightweight
- 4-way stretch flexibility



NEW



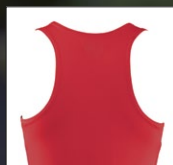
RACERBACK

332

335

5-INCH  
(Youth  
inseam  
graded)

NEW



RACERBACK

334

337

4-INCH

332|333



#### SPRINT JERSEY

92% polyester/8% spandex pinhole mesh • Wicks moisture  
• Heat sealed label • Self-fabric binding at neck and armholes  
• Modified racerback • Contrast side panel with two-color  
triangular inserts.

**332 ADULT:** S-3XL

List Price **17.00** (Upcharge for 2XL-3XL)

**333 YOUTH:** S-L

List Price **15.00**



335|336



#### SPRINT SHORT

92% polyester/8% spandex pinhole mesh • Wicks moisture • Heat  
sealed label • Covered elastic waistband • Matching inner brief  
with leg elastic • Contrast color side inserts • Side vents • 5-inch  
inseam • Youth inseam graded.

**335 ADULT:** S-3XL

List Price **19.00** (Upcharge for 2XL-3XL)

**336 YOUTH:** S-L

List Price **17.00**



#### PINHOLE MESH PERFORMANCE FABRIC



Pinhole mesh fabric  
provides unparalleled  
functionality with key  
high performance  
features and benefits.

334



#### LADIES SPRINT JERSEY

92% polyester/8% spandex pinhole mesh • Wicks moisture  
• Ladies' fit • Heat sealed label • Modified racerback  
• Contrast side panel with two-color triangular inserts

**334 LADIES:** S-2XL List Price **17.00** (Upcharge for 2XL)

For Youth sizes, see style 333.



337



#### LADIES SPRINT SHORT

92% polyester/8% spandex pinhole mesh • Wicks moisture  
• Ladies' fit • Heat sealed label • Covered elastic waistband with  
inside drawcord • Matching inner brief with leg elastic • Contrast  
color side inserts • Crossover tulip shaped vent • 4-inch inseam.

**337 LADIES:** XS-2XL List Price **19.00** (Upcharge for 2XL)





# 340|341



## VELOCITY TRACK JERSEY

100% polyester wicking knit • Heat sealed label • Self-fabric binding at neck and armholes • Contrast color front insert.

**340 ADULT:** S-3XL List Price **13.30** (Upcharge for 2XL-3XL)

**341 YOUTH:** S-L List Price **12.30**



# 345|346



## VELOCITY TRACK SHORT

100% polyester wicking knit • Heat sealed label • Covered elastic waistband • Matching inner brief with leg elastic • Contrast color side inserts • Side vents • 5-inch inseam • Self-fabric binding on hem • Youth inseam graded.

**345 ADULT:** S-3XL List Price **15.10** (Upcharge for 2XL-3XL)

**346 YOUTH:** S-L List Price **13.20**



340

345

5-INCH  
(Youth  
Inseam  
Graded)

# 342



## LADIES VELOCITY TRACK JERSEY

100% polyester wicking knit • Ladies' fit • Heat sealed label • Self-fabric binding at neck and armholes • Contrast color front insert.

**342 LADIES:** XS-2XL List Price **13.70** (Upcharge for 2XL)

**For Youth sizes, see style 341.**



342

347

4-INCH

# 347



## LADIES VELOCITY TRACK SHORT

100% polyester wicking knit • Ladies' fit • Heat sealed label • Covered elastic waistband with inside drawcord • Matching inner brief with leg elastic • Contrast color side inserts • Side vents • 4-inch inseam • Self-fabric binding on hem.

**347 LADIES:** XS-2XL List Price **15.10** (Upcharge for 2XL)

**For Youth sizes, see style 346.**



311



327  
5-INCH  
(Youth  
Inseam  
Graded)

313



327  
5-INCH  
(Youth  
Inseam  
Graded)

311|312



### WICKING TANK WITH SHOULDER INSERT

Colors are 100% nylon tricot with wicking finish • White is 100% polyester tricot with wicking finish • Heat sealed label • Self-fabric binding at neck and armholes • Contrast color shoulder inserts • Youth has two-ply front panel hemmed separately for embellishment.

**311 ADULT:** S-3XL List Price **13.90** (Upcharge for 2XL-3XL)  
**312 YOUTH:** S-L List Price **13.00**



327|328



### WICKING TRACK SHORT WITH SIDE INSERT

Colors are 100% nylon tricot with wicking finish • White is 100% polyester tricot with wicking finish • Covered elastic waistband • Matching inner brief with leg elastic • Contrast color side inserts • Side vents • 5-inch inseam • Self-fabric binding on hem • Youth inseam graded.

**327 ADULT:** S-3XL List Price **15.10** (Upcharge for 2XL-3XL)  
**328 YOUTH:** S-L List Price **13.90**



**create virtual samples**

quickly & easily create personalized custom flyers in a few simple steps. See pages 2-3 for details or visit [augustasportswear.com/marketingtools](http://augustasportswear.com/marketingtools) to start now!

313



### LADIES WICKING TANK WITH SHOULDER INSERT

Colors are 100% nylon tricot with wicking finish • White is 100% polyester tricot with wicking finish • Ladies' fit • Heat sealed label • Self-fabric binding at neck and armholes • Contrast color shoulder inserts • Two-ply front panel hemmed separately for embellishment.

**313 LADIES:** XS-2XL List Price **15.20** (Upcharge for 2XL)  
**For Youth sizes, see style 312.**







**315|316|317**



#### WICKING TANK WITH SIDE PANEL

Colors are 100% nylon tricot with wicking finish • White is 100% polyester tricot with wicking finish • Ladies' fit on style 316  
 • Heat sealed label • Self-fabric binding at neck and armholes  
 • Contrast color side panels • Ladies' and Youth have two-ply front panel hemmed separately for embellishment.

**315 ADULT:** S-3XL List Price **13.40** (Upcharge for 2XL-3XL)

**316 LADIES:** XS-2XL List Price **15.40** (Upcharge for 2XL)

**317 YOUTH:** S-L List Price **13.00**



**301|306|308**



#### WICKING TANK

Colors are 100% nylon tricot with wicking finish • White is 100% polyester tricot with wicking finish • Ladies' fit on style 306  
 • Heat sealed label • Self-fabric binding at neck and armholes  
 • Ladies' and Youth have two-ply front panel hemmed separately for embellishment.

**301 ADULT:** S-3XL List Price **11.50** (Upcharge for 2XL-3XL)

**306 LADIES:** S-2XL List Price **13.40** (Upcharge for 2XL)

**308 YOUTH:** S-L List Price **12.30**



**325|326**



#### LONGER LENGTH WICKING TRACK SHORT

100% nylon tricot with wicking finish • Covered elastic waistband  
 • Matching inner brief with leg elastic • Side vents • 5-inch inseam • Self-fabric binding on hem • Youth inseam graded.

**325 ADULT:** S-3XL List Price **14.20** (Upcharge for 2XL-3XL)

**326 YOUTH:** S-L List Price **12.30**



**322**



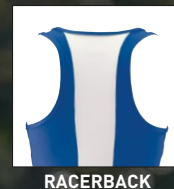
#### WICKING TRACK SHORT

100% nylon tricot with wicking finish • Covered elastic waistband  
 • Matching inner brief with leg elastic • Side vents • 2 1/2-inch inseam • Self-fabric binding on hem.

**322 ADULT:** XS-3XL List Price **12.90** (Upcharge for 2XL-3XL)







1282

1210



PINHOLE MESH INSERT

track & field/cross country

1282|1283



### LADIES INSPIRATION JERSEY

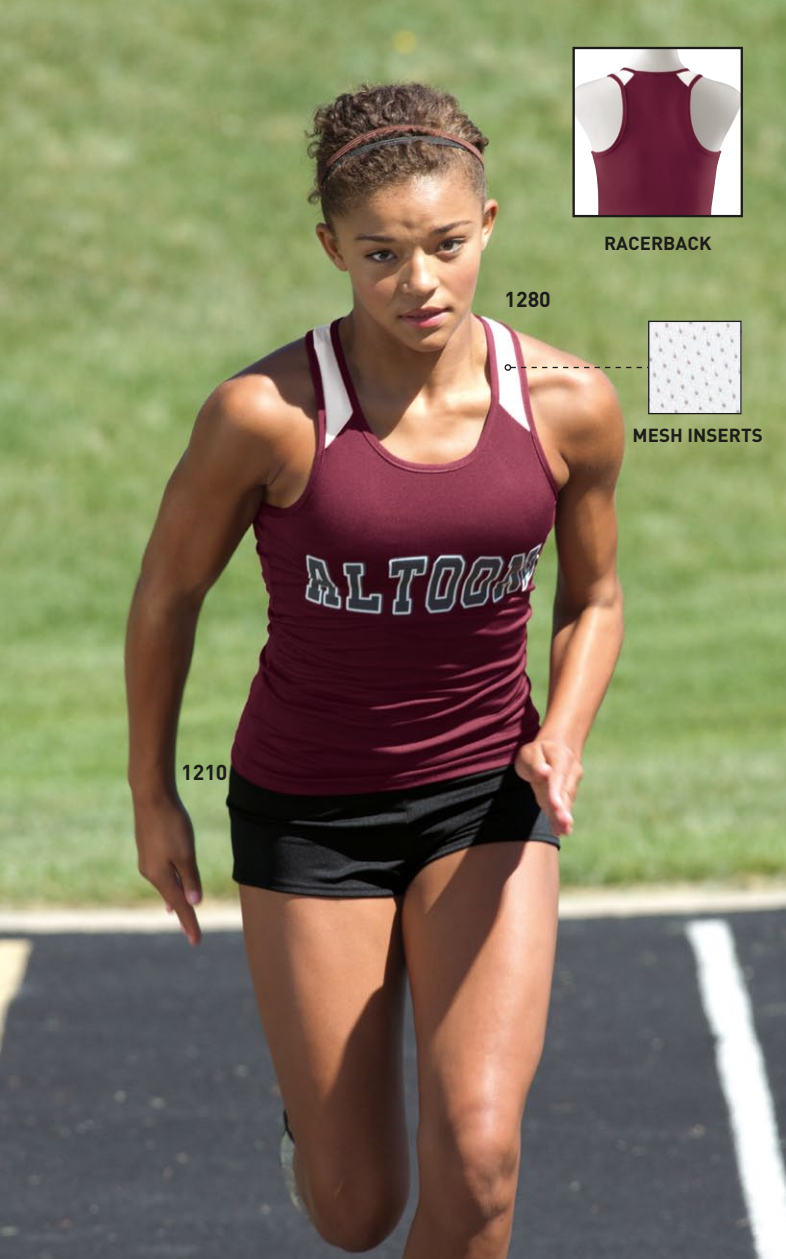
90% polyester/10% spandex knit • 92% polyester/8% spandex wicking pinhole mesh inserts • Odor resistant  
• Wicks moisture • Ladies' fit • Heat sealed label • Contrast color side and back mesh inserts for breathability  
• Racerback styling.

**1282 LADIES:** S-2XL List Price **19.90** (Upcharge for 2XL)

**1283 GIRLS:** S-L List Price **17.90**







RACERBACK

1280



MESH INSERTS

1280|1281



#### LADIES INFINITY JERSEY

90% polyester/10% spandex knit • 93% polyester/7% spandex mesh inserts • Odor resistant • Wicks moisture • Ladies' fit • Heat sealed label • Self-fabric binding at neck and armholes • White poly/spandex mesh shoulder inserts for breathability • Racerback styling.

**1280 LADIES:** S-2XL List Price **19.90** (Upcharge for 2XL)

**1281 GIRLS:** S-L List Price **17.90**



1210|1211



#### LADIES POLY/SPANDEX 2.5" SHORT

90% polyester/10% spandex knit • Odor resistant • Wicks moisture • Ladies' fit • Heat sealed label • Low rise • Covered elastic waistband • No side seams • 2½-inch inseam.

**1210 LADIES:** S-2XL List Price **15.00** (Upcharge for 2XL)

**1211 GIRLS:** XS-L List Price **14.00**



RACERBACK

707|708



#### LADIES POLY/SPANDEX RACERBACK TANK

90% polyester/10% spandex knit • 100% polyester wicking knit shelf bra • Odor resistant • Wicks moisture • Ladies' fit • Heat sealed label • Contrast color self-fabric binding at neck and armholes • Contrast two-color side panels • Racerback styling.

**707 LADIES:** S-2XL List Price **22.70** (Upcharge for 2XL)

**708 GIRLS:** S-L List Price **19.50**




**742|743**

**LADIES POLY/SPANDEX 4" SHORT**

90% polyester/10% spandex knit • Odor resistant • Wicks moisture • Ladies' fit • Heat sealed label • Flatlock seamed construction for extra comfort • Low rise • Covered elastic waistband • No side seams • Two-ply gusset • 4-inch inseam • Girls inseam graded.

**742 LADIES:** S-2XL List Price **15.80** (Upcharge for 2XL)

**743 GIRLS:** S-L List Price **14.00**



BLACK

RED

ROYAL

NAVY


**1210|1211**

**LADIES POLY/SPANDEX 2.5" SHORT**

90% polyester/10% spandex knit • Odor resistant • Wicks moisture • Ladies' fit • Heat sealed label • Low rise • Covered elastic waistband • No side seams • 2½-inch inseam.

**1210 LADIES:** S-2XL List Price **15.00** (Upcharge for 2XL)

**1211 GIRLS:** XS-L List Price **14.00**



BLACK

RED

ROYAL

COLUMBIA

BLUE

NAVY

ORANGE

MAROON

GOLD

PURPLE

KELLY

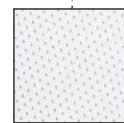
DARK

GREEN



## benefits

- built-in brief
- inside key pocket
- low rise


**MESH INSERT**

**MESH INSERT**
**1267|1268**

**LADIES JUNIOR FIT ADRENALINE SHORT**

Shell is 100% polyester micropoly • Inserts are 100% polyester mesh • Lining is 100% polyester wicking crepe • Liner wicks moisture • Junior fit • Low rise • Covered elastic waistband with inside drawcord • Inner brief with leg elastic • Contrast color lower front mesh insert • Inside key pocket • 4-inch inseam • Contrast self-fabric binding on side seams and hem • Girls inseam graded.

**1267 LADIES JUNIOR FIT:** S-2XL List Price **17.90** (Upcharge for 2XL)

**1268 GIRLS:** S-L List Price **17.00**



BLACK/

WHITE

RED/

WHITE

ROYAL/

BLACK/

WHITE

NAVY/

BLACK/

WHITE

BLACK/

GOLD/

WHITE

NAVY/

GOLD/

WHITE

DARK

GREEN/

GOLD/

WHITE

PURPLE/

GOLD/

WHITE/

POWER

PINK

GRAPHITE/

WHITE/

POWER

YELLOW

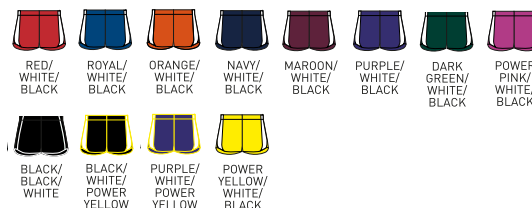
**1265|1266**

**LADIES JUNIOR FIT PULSE TEAM SHORT**

Shell is 100% polyester micropoly • Inserts are 100% polyester mesh • Lining is 100% polyester wicking crepe • Liner wicks moisture • Junior fit • Low rise • Covered elastic waistband with inside drawcord • Inner brief with leg elastic • Inside key pocket • Mesh insert side panel • 4-inch inseam • Contrast self-fabric binding on side panels and hem • Girls inseam graded.

**1265 LADIES JUNIOR FIT:** S-2XL List Price **17.90** (Upcharge for 2XL)

**1266 GIRLS:** S-L List Price **17.00**



RED/

WHITE/

BLACK

ROYAL/

WHITE/

BLACK

ORANGE/

WHITE/

BLACK

NAVY/

WHITE/

BLACK

MAROON/

WHITE/

BLACK

PURPLE/

WHITE/

BLACK

DARK

GREEN/

WHITE/

BLACK

POWER

PINK/

WHITE/

BLACK

BLACK/

BLACK/

WHITE

BLACK/

WHITE/

POWER

YELLOW

PURPLE/

WHITE/

POWER

YELLOW

POWER

YELLOW/

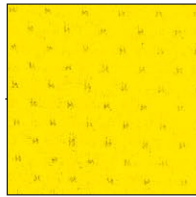
WHITE/

BLACK





#### PINHOLE MESH PERFORMANCE FABRIC



Pinhole Mesh fabric provides unparalleled functionality with key high performance features and benefits.

**1080**



#### EXA LONG SLEEVE CREW

92% polyester/8% spandex wicking pinhole mesh  
• Heat sealed label • Self-fabric collar and cuffs  
• Set-in sleeves with shoulder inserts.

**1080 ADULT:** S-3XL List Price **21.00**  
(Upcharge for 2XL-3XL)



**4600|4601**



#### WICKING LONG SLEEVE WARMUP SHIRT

100% polyester wicking mesh • Heat sealed label  
• Tipped rib-knit lap-over collar • Contrast color accent piping on front shoulder • Contrast color sleeve and side inserts • Set-in sleeves • Self-fabric cuffs.

**4600 ADULT:** XS-3XL List Price **29.40**  
(Upcharge for 2XL-3XL)

**4601 YOUTH:** S-L List Price **27.30**



**4620**



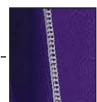
#### WICKING MESH LONG SLEEVE JERSEY

100% polyester wicking mesh • Heat sealed label • Rib-knit collar  
• Contrast color side inserts • Contrast color topstitching on raglan sleeves.

**4620 ADULT:** XS-3XL List Price **29.40** (Upcharge for 2XL-3XL)



#### THREE-NEEDLE COVERSTITCHING



**4650**



#### LADIES WICKING MESH CHARGER JERSEY

100% polyester wicking mesh • Ladies' fit • Heat sealed label  
• Self-fabric V-neck collar with contrast color three-needle coverstitching • Contrast color front and back sleeve inserts with contrast three-needle coverstitching.

**4650 LADIES:** XS-2XL List Price **24.20** (Upcharge for 2XL)



NEW



COMPANION TO  
STYLE 4752

4750



#### SYNERGY PULLOVER

90% polyester/10% spandex knit • Wicks moisture • Heat-sealed label • Half-zip pullover style • Raglan sleeves with contrast color inserts • Self-fabric cuffs • Dropped tail.

**4750 ADULT:** XS-3XL List Price **43.90** (Upcharge for 2XL-3XL)



NEW



4752



#### LADIES SYNERGY PULLOVER

90% polyester/10% spandex knit • Wicks moisture • Ladies' fit • Heat sealed label • Half-zip pullover style • Raglan sleeves with contrast color inserts • Self-fabric cuffs • Dropped tail.

**4752 LADIES:** XS-2XL List Price **41.90** (Upcharge for 2XL)



AVAILABLE  
IN TALL\*

4700|4701



#### LADIES POLY/SPANDEX JACKET

90% polyester/10% spandex knit • Wicks moisture • Ladies' fit • Heat sealed label • Front zipper • Raglan sleeves with contrast accent stripe • Self-fabric binding on cuffs.

**4700 LADIES:** S-2XL List Price **41.90** (Upcharge for 2XL)

**4701 GIRLS:** S-L List Price **39.90**



728|729



#### LADIES POLY/SPANDEX PANT

90% polyester/10% spandex knit • Wicks moisture • Ladies' fit • Heat sealed label • Low rise • Double-needle coverstitched waistband with covered elastic.

**728 LADIES:** S-2XL List Price **33.90** (Upcharge for 2XL & Tall sizes)

**LADIES TALL:** MT-2XLT  
**729 GIRLS:** S-L List Price **31.90**

\*Available in Tall







COMPANION TO  
STYLE 4392

SIDE SEAM  
POCKETS



LADIES  
FIT

SIDE SEAM  
POCKETS

## 4390|4391

### MEDALIST JACKET

Heavyweight 100% polyester brushed tricot • Front zipper • Contrast color inserts on front • Raglan sleeves • Front seam pockets • Elastic cuffs and bottom band.

**4390 ADULT:** S-2XL List Price **31.40** (Upcharge for 2XL)

**4391 YOUTH:** S-L List Price **29.70**



## 7755|7756

### MEDALIST PANT

Heavyweight 100% polyester brushed tricot • Covered elastic waistband with inside drawcord • Side seam pockets • Contrast color side inserts • Zipper on outside lower leg.

**7755 ADULT:** S-2XL List Price **29.10** (Upcharge for 2XL)

**7756 YOUTH:** S-L List Price **26.50**

## 4392

### LADIES MEDALIST JACKET

Heavyweight 100% polyester brushed tricot • Ladies' fit • Front zipper • Raglan sleeves • Contrast color inserts on front • Front seam pockets • Elastic cuffs • Open bottom.

**4392 LADIES:** S-2XL List Price **31.40** (Upcharge for 2XL)

**For Youth sizes, see style 4391.**



## 7752

### LADIES MEDALIST PANT

Heavyweight 100% polyester brushed tricot • Ladies' fit • Covered elastic waistband with inside drawcord • Side seam pockets • Contrast color side inserts • Zipper on outside lower leg.

**7752 LADIES:** S-2XL List Price **29.10** (Upcharge for 2XL)

**For Youth sizes, see style 7756.**



FABRIC ZOOM



WRITABLE  
HANDLE  
WRAPPER



WRITABLE  
HANDLE  
WRAPPER



REMOVABLE  
POCKET

1740



## 1740|1745

### FLARE DUFFEL

Shiny hexagon patterned polyester with PVC coating and 600-denier polyester with PVC coating • Zippered main compartment has large U-shaped opening with two zipper pulls • Zippered front pocket removes for easy embellishment • Inside zippered pocket • Side mesh pocket • Shoe pocket • Web handles with self-fabric handle wrapper • Adjustable and detachable shoulder strap • Writable inside handle wrapper.

**1740 MEDIUM:** 21"W x 9½"H x 10"D

**1745 LARGE:** 28"W x 12"H x 13"D

Call for Pricing



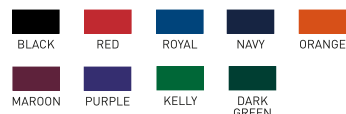
## 1825

### SPIRIT BAG

600-denier polyester with PVC coating • Zippered main compartment has large U-shaped opening with two zipper pulls • Side pockets • Matching web handles with self-fabric handle wrapper, reinforced at stress points • Adjustable and detachable matching shoulder strap with black rubber shoulder guard • Plastic hardware • Self-fabric piping • Removable inside bottom board.

**1825:** 18"W x 10"H x 9"D

Call for Pricing



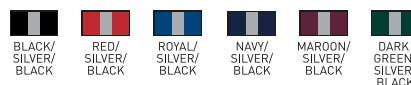
## 1755

### GAME DUFFEL WITH SHOE POCKET

600-denier polyester with durable PVC backing with shiny inserts • Large main compartment • Front pocket opens for easy embellishment • Felt lined valuables pocket • Vented zippered double shoe compartment • Interior organization panel • Writable inside handle wrapper.

**1755:** 19½"W x 9½"H x 10"D

Call for Pricing



## 167

### REVERSIBLE FROM DRAWSTRING BACKPACK TO A TOTE BAG

### REVERB BACKPACK

210-denier nylon with PU coating • Fully reversible from drawstring bag to tote bag • Hemmed top with drawcord closure • Zippered front pocket allows for embellishment • Bottom corner grommets for reinforcement • Web handles.

**167:** 14"W x 18"H

Call for Pricing





unmatched reliability  
**team spirit.**

