



2013

# soccer/ lacrosse & field hockey





# marketing tools

preselected uniform builder  
& custom flyer designer

Save TIME with your marketing tools. Quickly and easily create VIRTUAL SAMPLE flyers.

**START TODAY!**

[www.augustasportswear.com/marketingtools](http://www.augustasportswear.com/marketingtools)

## NEW SIZES & COLORS

all new sizes and colors appear in **BOLD**



### MOISTURE MANAGEMENT

fabric wicks moisture away keeping the body cool and dry



### PRO CUT

longer rise and overall fuller fit



### 4-WAY STRETCH

stretch properties allow for increased mobility



### WATER RESISTANT

resists rain and water to keep the body protected and dry



### ODOR RESISTANT



### LOOSE FIT

LOOSE FIT



### FITTED



### SEMI-FIT

- choose styles
- select color
- decorate
- personalize
- complete order form
- save, print or email

## In a Few EASY Steps



**Dye Migration.** Augusta Sportswear® cannot be held responsible for ink migration on polyester styles that can be attributed to poor ink quality or processing at temperatures exceeding those recommended by the ink manufacturer. **Dyeing.** Because of the variability of the dyeing process, we cannot guarantee perfect continuity of shade across all styles or from one order to the next. Jackets and pants are cut and offered for sale as separates, not as sets. **Decorating.** All embellishment is for photography and catalog purposes only. All styles are sold blank with no decorations applied. Augusta Sportswear® does not offer decorating services.

# contents

- 4 NEW STYLES
- 6 SOCCER
- 16 LADIES SOCCER
- 19 LACROSSE
- 25 LADIES LACROSSE/  
FIELD HOCKEY
- 32 WARMUPS
- 34 ACCESSORIES
- 35 BAGS

## Create Virtual Samples!

With your online **Preselected Uniform Builder** and **Custom Flyer Designer** tools, in just a few steps you can QUICKLY & EASILY create personalized flyers showcasing various styles to make the selection process even easier. SIMPLE. FAST. EFFECTIVE. Start saving time today!

## preselected uniform builder

## custom flyer designer





NEW

new  
products

outfit  
your team.

one of the largest offerings of  
ladies & youth specific styles



1610|1611 – pg. 6



1535|1536 – pg. 9



5043|5044 – pg. 10



1615|1616 – pg. 12



4750 – pg. 14



5045|5046 – pg. 16



1350|1351 – pg. 18



9700|9701 – pg. 19



9710|9711 – pg. 19



9720|9721 – pg. 19



1470|1471 – pg. 23



1425|1426 – pg. 23



966 – pg. 25



968 – pg. 25



1310|1311 – pg. 25



1355|1356 – pg. 26



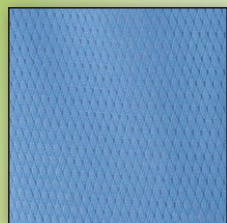
1740|1745 – pg. 35



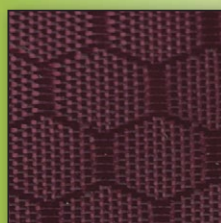
# quality **styles.**

large selection of high performance,  
innovative and basic fabric types to choose from

## fabric guide

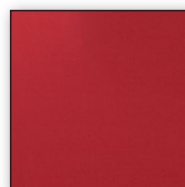


**DIAMOND MESH** pgs 19  
diamond mesh fabric provides  
functional 2-way stretch  
properties for increased  
mobility as well as a  
high level of durability



**SHINY HEXAGON  
DESIGN FABRIC** pg 35

the new shiny hexagon textured fabric  
gives a unique appearance to an already  
ultra-functional bag with numerous pockets  
and one removable pocket for easier decorating



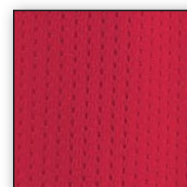
**POLY/SPANDEX** pg 31  
poly/spandex provides  
4-way stretch performance  
so it moves with you



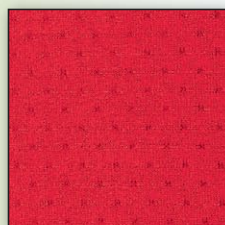
**SMOOTH KNIT** pg 10  
features a smooth  
and soft feel in a  
lightweight fabric



**TRICOT MESH** pg 19  
100% polyester mesh with the  
largest hole design featuring  
two layers of tricot mesh or  
one layer of tricot inside lining



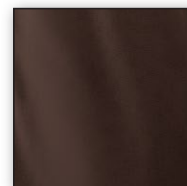
**WICKING MESH** pg 11  
100% wicking mesh  
textured fabric design  
featuring moisture  
management technology



**PINHOLE MESH** pg 25  
pinhole mesh fabric  
provides unparalleled  
functionality with key  
high performance  
features and benefits



**DIAMOND TECH** pg 32  
water resistant fabric provides  
improved softness with a  
premier look and design



**BRUSHED TRICOT**  
pg 33 gives you a  
soft exterior feel and  
all-around warmth



1610|1611



#### LAZER JERSEY

100% polyester wicking knit • 92% polyester/8% spandex pinhole mesh inserts • Wicks moisture • Heat sealed label • Self-fabric collar • Front and back of jersey are wicking knit • Contrast color pinhole mesh sleeve, and side inserts for breathability • Raglan sleeves.

**1610 ADULT:** S-3XL List Price **21.90** (Upcharge for 2XL-3XL)

**1611 YOUTH:** S-L List Price **19.90**



460|461



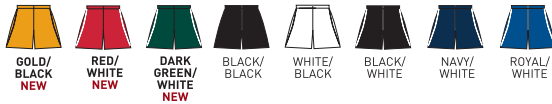
NEW COLORS

#### WICKING SOCCER SHORT WITH PIPING

100% polyester wicking knit • Covered elastic waistband with inside drawcord • Contrast color piping • 6-inch inseam • Youth inseam graded.

**460 ADULT:** S-2XL List Price **10.70** (Upcharge for 2XL)

**461 YOUTH:** XS-L List Price **8.60**



PINHOLE MESH INSERT



1611

461



218|219

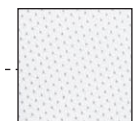


#### WICKING COLOR BLOCK JERSEY

100% polyester wicking knit with 93% polyester/7% spandex mesh • Heat sealed label • Rib-knit collar • Poly/spandex mesh inserts • Raglan sleeves.

**218 ADULT:** S-3XL List Price **16.30** (Upcharge for 2XL-3XL)

**219 YOUTH:** S-L List Price **13.90**



MESH INSERT



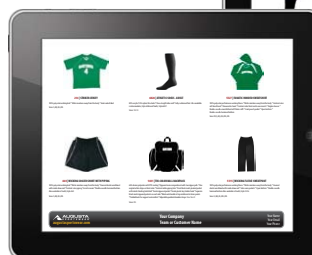


**214|215****STRIKER JERSEY**

100% polyester wicking knit • Wicks moisture • Heat sealed label • Self-fabric collar with contrast insert • Raglan sleeves with piping • Piping down side seams.

**214 ADULT:** S-2XL List Price **15.90** (Upcharge for 2XL)

**215 YOUTH:** S-L List Price **13.90**

**create virtual samples**

quickly & easily create personalized custom flyers in a few simple steps. See pages 2-3 for details or visit [augustasportswear.com/marketingtools](http://augustasportswear.com/marketingtools) to start now!

**PINHOLE MESH INSERT****1510|1511****SURGE JERSEY**

100% polyester wicking knit • 92% polyester/8% spandex pinhole mesh inserts • Wicks moisture • Heat sealed label • Contrast color self-fabric collar • Contrast color front, side and sleeve inserts • Set-in sleeves.

**1510 ADULT:** S-3XL List Price **19.50** (Upcharge for 2XL-3XL)

**1511 YOUTH:** S-L List Price **17.50**







BACK

1030|1031



#### ALL-CONFERENCE CREW

100% polyester wicking knit • Wicks moisture • Heat sealed label • Self-fabric collar • Contrast color inserts • Double-needle coverstitched collar and armholes • Set-in sleeves.

**1030 ADULT:** S-3XL List Price **19.00** (Upcharge for 2XL-3XL)

**1031 YOUTH:** S-L List Price **17.00**



243|244



#### WICKING SOCCER SHIRT

100% polyester wicking knit • Heat sealed label • Contrast color rib-knit modified V-neck collar • One-piece contrast color side panels for ease of movement • Raglan sleeves with contrast accent piping.

**243 ADULT:** S-2XL List Price **21.00** (Upcharge for 2XL)

**244 YOUTH:** S-L List Price **17.90**



790|791



#### WICKING T-SHIRT

100% polyester wicking knit • Heat sealed label • Self-fabric collar • Set-in sleeves.

**790 ADULT:** S-4XL List Price **11.40** (Upcharge for 2XL-4XL)

**791 YOUTH:** S-L List Price **11.00**

\* Available in 4XL.





NEW



461



1070

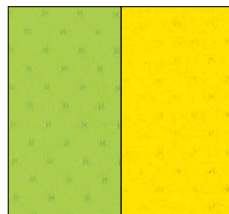
460

1535|1536

**NITRO JERSEY**

92% polyester/8% spandex pinhole mesh • 100% polyester wicking knit • Wicks moisture • Heat sealed label • Contrast color self-fabric V-neck collar • Contrast color sleeve and side inserts • Raglan sleeves.

**1535 ADULT:** S-3XL List Price **19.90** (Upcharge for 2XL-3XL)  
**1536 YOUTH:** S-L List Price **17.90**

**PINHOLE MESH  
PERFORMANCE FABRIC**

Pinhole Mesh fabric provides unparalleled functionality with key high performance features and benefits.

**benefits**

- extremely soft feel
- full coverage breathability
- lightweight
- 4-way stretch flexibility

1070|1071

**EXA SHORT SLEEVE CREW**

92% polyester/8% spandex wicking pinhole mesh • Heat sealed label • Self-fabric collar • Set-in sleeves with shoulder inserts.

**1070 ADULT:** S-3XL List Price **15.90** (Upcharge for 2XL-3XL)  
**1071 YOUTH:** S-L List Price **13.90**





## coordinating ladies/girls styles 5043|5044, pg. 16

**5043|5044**



### MOTION CREW

100% polyester wicking smooth knit • Odor resistant • Wicks moisture • Heat sealed label • Self-fabric collar • Topstitched shoulder seams • Set-in sleeves • Contrast color piping on shoulder • Contrast color insert at sleeve hem.

**5043 ADULT:** S-3XL List Price **19.90** (Upcharge for 2XL-3XL)

**5044 YOUTH:** S-L List Price **17.90**



### create virtual samples

quickly & easily create personalized custom flyers in a few simple steps. See pages 2-3 for details or visit [augustasportswear.com/marketingtools](http://augustasportswear.com/marketingtools) to start now!



PINHOLE MESH INSERT



## coordinating ladies/girls styles 1055|1056, pg. 16

**1050|1051**



### PREMIER CREW

100% polyester wicking smooth knit • 92% polyester/8% spandex pinhole mesh inserts • Odor resistant • Heat sealed label • Self-fabric collar • Set-in sleeves • Breathable contrast color pinhole mesh shoulder and front inserts.

**1050 ADULT:** S-3XL List Price **19.90** (Upcharge for 2XL-3XL)

**1051 YOUTH:** S-L List Price **17.90**







## benefits

- wicks moisture
- odor resistant
- increased mobility
- soft feel


**1020|1021**


### GAMEDAY CREW

100% polyester wicking smooth knit • Odor resistant • Heat sealed label • Self-fabric collar • Contrast color shoulder and side inserts • Set-in sleeves.

**1020 ADULT:** S-4XL List Price **25.00** (Upcharge for 2XL-4XL)  
**1021 YOUTH:** S-L List Price **21.00**


**1010|1011**


### ELITE JERSEY

100% polyester wicking smooth knit • Odor resistant • Heat sealed label • Self-fabric collar • Set-in sleeves.

**1010 ADULT:** S-3XL List Price **14.90** (Upcharge for 2XL-3XL)  
**1011 YOUTH:** S-L List Price **13.50**


**875|876**


### WICKING MESH TRI-COLOR JERSEY

100% polyester wicking mesh • Heat sealed label • Rib-knit collar • Contrast color sleeve inserts • Raglan sleeves.

**875 ADULT:** S-3XL List Price **23.00** (Upcharge for 2XL-3XL)  
**876 YOUTH:** S-L List Price **20.00**


**895|896**


### WICKING MESH JERSEY

100% polyester wicking mesh • Heat sealed label • Rib-knit collar • Contrast color front inserts • Contrast color topstitching on raglan sleeves.

**895 ADULT:** S-3XL List Price **23.00** (Upcharge for 2XL-3XL)  
**896 YOUTH:** S-L List Price **20.00**



NEW

1616



FULLY REVERSIBLE

461

# fully reversible jerseys

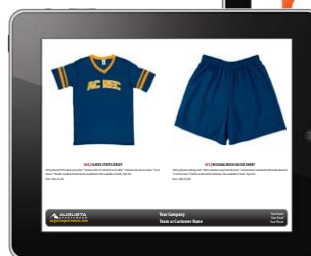
1615|1616

## VERGE REVERSIBLE JERSEY

Two layers of 100% polyester tricot mesh • Fully reversible  
• Wicking knit V-neck collar • Contrast color piping in armholes and side seams • Raglan sleeves • Each layer finished separately for embellishment.

**1615 ADULT:** S-3XL List Price **23.90**  
(Upcharge for 2XL-3XL)

**1616 YOUTH:** S-L List Price **21.90**



## create virtual samples

quickly & easily create personalized custom flyers in a few simple steps. See pages 2-3 for details or visit [augustasportswear.com/marketingtools](http://augustasportswear.com/marketingtools) to start now!

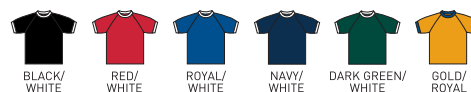
217|216

## REVERSIBLE PRACTICE JERSEY

Two layers of 100% polyester tricot mesh • Fully reversible  
• Contrast color rib-knit collar and cuffs • Raglan sleeves  
• Each layer hemmed separately for embellishment.

**217 ADULT:** S-2XL List Price **21.90** (Upcharge for 2XL)

**216 YOUTH:** S-L List Price **17.90**





# 12 new colors

28 colors sized from youth small to adult 2XL



**360|361**

**NEW COLORS**

## SLEEVE STRIPE JERSEY

50% polyester/50% cotton jersey knit • Contrast color rib-knit V-neck collar • Contrast color sleeve stripes • Set-in sleeves.

**360 ADULT:** S-2XL List Price **13.00** (Upcharge for 2XL)

**361 YOUTH:** S-L List Price **10.70**



**710|711**

## RINGER T-SHIRT

50% polyester/50% cotton jersey knit • Contrast color rib-knit collar and cuffs.

**710 ADULT:** S-3XL List Price **8.20** (Upcharge for 2XL-3XL & Athletic Heather Bodies)

**711 YOUTH:** S-L List Price **6.30**

**\*Adult sizes only.**





**1005|1006**



**APEX LONG SLEEVE CREW**

100% polyester wicking smooth knit • Odor resistant • Heat sealed label • Self-fabric collar and cuffs • Set-in sleeves.

**1005 ADULT:** S-3XL List Price **19.90**  
(Upcharge for 2XL-3XL)  
**1006 YOUTH:** S-L List Price **17.30**



**4620**



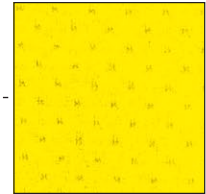
**WICKING MESH LONG SLEEVE JERSEY**

100% polyester wicking mesh • Heat sealed label • Rib-knit collar • Contrast color side inserts • Contrast color topstitching on raglan sleeves.

**4620 ADULT:** XS-3XL List Price **29.40** (Upcharge for 2XL-3XL)



**PINHOLE MESH  
PERFORMANCE FABRIC**



**Pinhole Mesh fabric provides unparalleled functionality with key high performance features and benefits.**

**1080**



**EXA LONG SLEEVE CREW**

92% polyester/8% spandex wicking pinhole mesh • Heat sealed label • Self-fabric collar and cuffs • Set-in sleeves with shoulder inserts.

**1080 ADULT:** S-3XL List Price **21.00**  
(Upcharge for 2XL-3XL)



**4750**



**SYNERGY PULLOVER**

90% polyester/10% spandex knit • Wicks moisture • Heat-sealed label • Half-zip pullover style • Raglan sleeves with contrast color inserts • Self-fabric cuffs • Dropped tail.

**4750 ADULT:** XS-3XL List Price **43.90** (Upcharge for 2XL-3XL)





**460|461****NEW  
COLORS****WICKING SOCCER SHORT WITH PIPING**

100% polyester wicking knit • Covered elastic waistband with inside drawcord • Contrast color piping • 6-inch inseam • Youth inseam graded.

**460 ADULT:** S-2XL List Price **10.70** (Upcharge for 2XL)

**461 YOUTH:** XS-L List Price **8.60**



**GOLD/  
BLACK**  
NEW



**RED/  
WHITE**  
NEW



**DARK  
GREEN/  
WHITE**  
NEW



**BLACK/  
BLACK**



**WHITE/  
BLACK**



**BLACK/  
WHITE**



**NAVY/  
WHITE**



**ROYAL/  
WHITE**

**475|476****WICKING MESH SOCCER SHORT**

100% polyester wicking mesh • Covered elastic waistband with inside drawcord • 6-inch inseam • Youth inseam graded.

**475 ADULT:** S-2XL List Price **13.90** (Upcharge for 2XL)

**476 YOUTH:** S-L List Price **11.90**



**BLACK**



**WHITE**



**RED**



**ROYAL**



**NAVY**



**MAROON**



**DARK  
GREEN**

**930|931****DAZZLE SOCCER SHORT**

100% polyester dazzle fabric • Covered elastic waistband with inside drawcord • V-notch leg • 5-inch inseam • Youth inseam graded.

**930 ADULT:** S-2XL List Price **13.40** (Upcharge for 2XL)

**931 YOUTH:** S-L List Price **11.80**



**BLACK**



**WHITE**



**RED**



**ROYAL**



**NAVY**



**MAROON**



**DARK  
GREEN**

**430|431****LONG CHECKERBOARD NYLON SHORT**

100% nylon checkerboard fabric • Covered elastic waistband with outside drawcord • V-notch leg • 6-inch inseam • Single-needle hemmed bottom • Inseam graded.

**430 ADULT:** S-XL List Price **15.10**

**431 YOUTH:** S-L List Price **13.10**



**BLACK**



**WHITE**



**RED**



**ROYAL**



**NAVY**



**GOLD**



**DARK  
GREEN**

coordinating adult & youth,  
styles 5043/5044 pg. 10

**5045|5046**



#### LADIES MOTION JERSEY

100% polyester wicking smooth knit • Odor resistant • Wicks moisture  
• Ladies' fit • Heat sealed label • Self-fabric V-neck collar • Topstitched shoulder seams • Set-in sleeves • Contrast color piping on shoulder  
• Contrast color insert at sleeve hem.

**5045 LADIES:** S-2XL List Price **18.40** (Upcharge for 2XL)

**5046 GIRLS:** S-L List Price **16.50**



#### create virtual samples

quickly & easily create  
personalized custom flyers  
in a few simple steps. See  
pages 2-3 for details or visit  
[augustasportswear.com/  
marketingtools](http://augustasportswear.com/marketingtools) to start now!

coordinating adult & youth,  
styles 1050/1051 pg. 10

**1055|1056**



#### LADIES PREMIER JERSEY

100% polyester wicking smooth knit • 92% polyester/8% spandex  
pinhole mesh inserts • Odor resistant • Ladies' fit • Heat sealed  
label • Self-fabric V-neck collar • Topstitched shoulder seams  
• Set-in sleeves • Breathable contrast color pinhole mesh shoulder  
and front inserts.

**1055 LADIES:** S-2XL List Price **19.90** (Upcharge for 2XL)

**1056 GIRLS:** S-L List Price **17.90**



**NEW**

5046



961



PINHOLE MESH  
INSERT

1056



961



**1015|1016****LADIES ELITE JERSEY**

100% polyester wicking smooth knit • Odor resistant  
 • Ladies' fit • Heat sealed label • Self-fabric V-neck collar  
 • Topstitched shoulder seams • Set-in sleeves.

**1015 LADIES:** S-2XL List Price **14.90** (Upcharge for 2XL)

**1016 GIRLS:** S-L List Price **13.50**

**PINHOLE MESH PERFORMANCE FABRIC**

**Pinhole Mesh fabric provides unparalleled functionality with key high performance features and benefits.**

**1270|1271****LADIES HEAT JERSEY**

92% polyester/8% spandex pinhole mesh • Wicks moisture  
 • Ladies' fit • Heat sealed label • Self-fabric V-neck collar  
 • Raglan sleeves with contrast color inserts • Contrast color side inserts • Fishtail bottom.

**1270 LADIES:** S-2XL List Price **21.90** (Upcharge for 2XL)

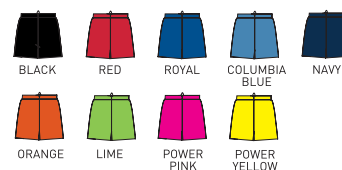
**1271 GIRLS:** S-L List Price **19.90**

**1292|1293****LADIES INFERNO SHORT**

92% polyester/8% spandex pinhole mesh • Wicks moisture  
 • Ladies' fit • Heat sealed label • Covered elastic waistband with inside drawcord • 5-inch inseam • Girls inseam graded.

**1292 LADIES:** S-2XL List Price **13.90** (Upcharge for 2XL)

**1293 GIRLS:** S-L List Price **13.10**





#### PINHOLE MESH PERFORMANCE FABRIC



Pinhole Mesh fabric provides unparalleled functionality with key high performance features and benefits.

**1350|1351**



#### LADIES STORM JERSEY

92% polyester/8% spandex pinhole mesh • Wicks moisture  
• Ladies' fit • Heat sealed label • Self-fabric V-neck collar  
• Contrast color piping on forward shoulder and side seam.

**1350 LADIES:** S-2XL List Price **13.90** (Upcharge for 2XL)

**1351 GIRLS:** S-L List Price **12.90**



**571**



#### LADIES WICKING V-NECK JERSEY

100% polyester wicking knit • Ladies' fit • Heat sealed label  
• Self-fabric V-neck collar • Raglan sleeves • Fishtail bottom.

**571 LADIES:** XS-2XL List Price **11.50** (Upcharge for 2XL)



**960|961**



#### LADIES WICKING MESH SHORT

100% polyester wicking mesh • Ladies' fit • Covered elastic waistband with inside drawcord • 5-inch inseam  
• Girls inseam graded.

**960 LADIES:** S-2XL List Price **12.60** (Upcharge for 2XL)

**961 GIRLS:** S-L List Price **11.90**





NEW

CONFORMS  
TO NFHS  
REGULATIONS

9700



9710

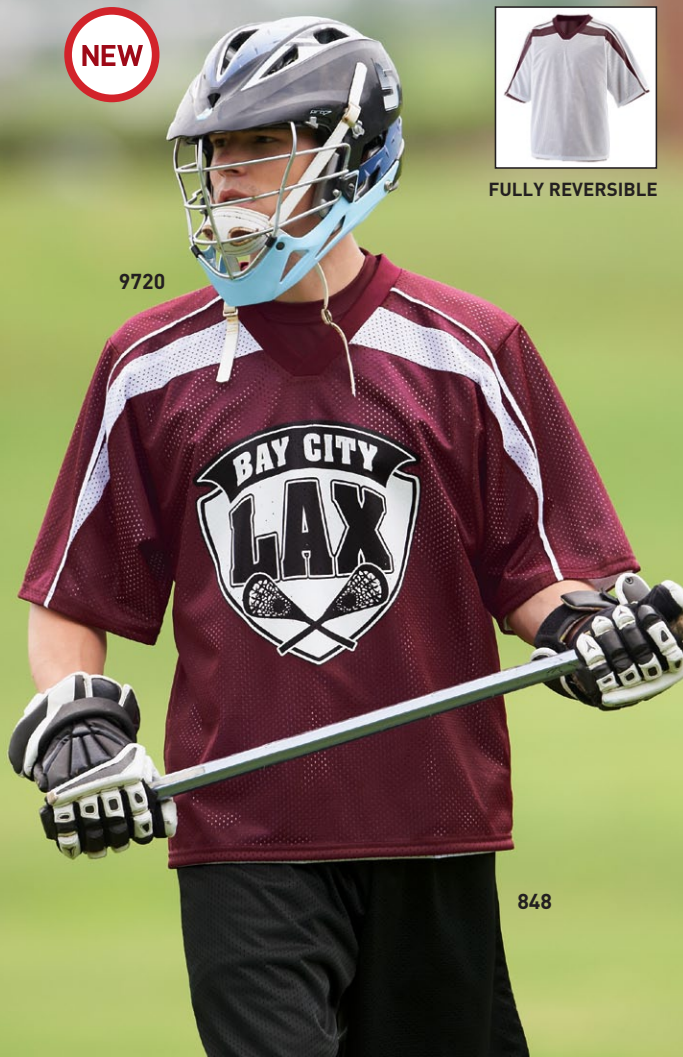
9-INCH  
(Youth  
Inseam  
Graded)

NEW



FULLY REVERSIBLE

9720



848

9700|9701

#### THUNDER JERSEY

100% polyester diamond mesh body • 100% polyester dazzle yoke and sleeves • V-neck collar • Contrast collar, cuffs and side inserts • Front and back yoke is two layers • Oversized shoulder and full-cut sleeves to accommodate pads • Set-in sleeves • Two-needle coverstitched reinforced yoke, armholes, and side seams • Conforms to NFHS regulations.

**9700 ADULT:** S/M, L/XL, 2XL List Price **27.00**  
(Upcharge for 2XL)  
**9701 YOUTH:** M/L List Price **25.00**

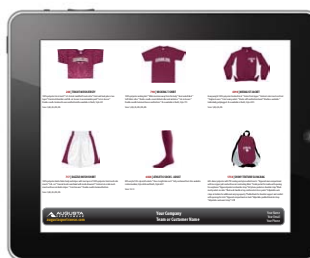


9710|9711

#### THUNDER SHORT

100% polyester diamond mesh • 100% polyester dazzle side inserts • 100% polyester tricot lining • Covered elastic waistband with inside drawcord • Contrast color side inserts • Fully lined • 9-inch inseam • Youth seam graded.

**9710 ADULT:** S-2XL List Price **27.00**  
(Upcharge for 2XL)  
**9711 YOUTH:** S-L List Price **25.00**



#### create virtual samples

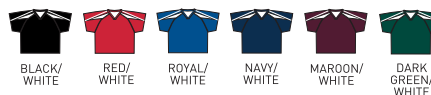
quickly & easily create personalized custom  
flyers in a few simple steps. See pages 2-3  
for details or visit [augustasportswear.com/  
marketingtools](http://augustasportswear.com/marketingtools) to start now!

9720|9721

#### CREASE REVERSIBLE JERSEY

Two layers of 100% polyester tricot mesh • Fully reversible • Knit collar • Contrast color shoulder inserts and piping • Set-in sleeves • Each layer finished separately for embellishment.

**9720 ADULT:** S/M, L/XL, 2XL List Price **27.50**  
(Upcharge for 2XL)  
**9721 YOUTH:** M/L List Price **25.50**





**207|208**

#### REVERSIBLE TRICOT MESH LACROSSE TANK

Two layers of 100% polyester tricot mesh • Fully reversible • Waist length • Each layer hemmed separately for embellishment.

**207 ADULT:** S/M, L/XL, 2XL List Price **14.50**  
(Upcharge for 2XL)  
**208 YOUTH:** M/L List Price **13.00**



BLACK/  
WHITE



RED/  
WHITE



ROYAL/  
WHITE



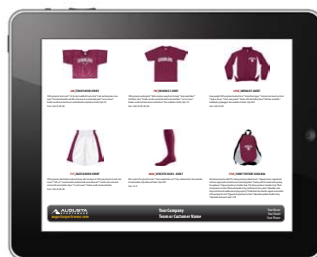
NAVY/  
WHITE



MAROON/  
WHITE



DARK  
GREEN/  
WHITE



#### create **virtual samples**

quickly & easily create personalized custom flyers in a few simple steps. See pages 2-3 for details or visit [augustasportswear.com/marketingtools](http://augustasportswear.com/marketingtools) to start now!



**240|241**

#### TRICOT MESH JERSEY

100% polyester tricot mesh • Rib-knit modified V-neck collar • Front and back yoke is two layers • Oversized shoulders and full-cut sleeves to accommodate pads • Set-in sleeves.

**240 ADULT:** S-3XL List Price **18.70**  
(Upcharge for 2XL-3XL)  
**241 YOUTH:** S-L List Price **16.60**



BLACK



WHITE



RED



ROYAL



NAVY



MAROON



GOLD



DARK  
GREEN





PINHOLE MESH  
PERFORMANCE FABRIC



## benefits

- extremely soft feel
- full coverage breathability
- lightweight
- 4-way stretch flexibility

1070|1071



### EXA SHORT SLEEVE CREW

92% polyester/8% spandex wicking pinhole mesh • Heat sealed label • Self-fabric collar • Set-in sleeves with shoulder inserts.

**1070 ADULT:** S-3XL List Price **15.90** (Upcharge for 2XL-3XL)

**1071 YOUTH:** S-L List Price **13.90**



- wicks moisture
- odor resistant
- increased mobility
- softer feel

1010|1011



### ELITE JERSEY

100% polyester wicking smooth knit • Odor resistant • Heat sealed label • Self-fabric collar • Set-in sleeves.

**1010 ADULT:** S-3XL List Price **14.90** (Upcharge for 2XL-3XL)

**1011 YOUTH:** S-L List Price **13.50**



- wicks moisture

790|791



### WICKING T-SHIRT

100% polyester wicking knit • Heat sealed label • Self-fabric collar • Set-in sleeves.

**790 ADULT:** S-4XL List Price **11.40** (Upcharge for 2XL-4XL)

**791 YOUTH:** S-L List Price **11.00**

\* Available in 4XL.





4750



#### SYNERGY PULLOVER

90% polyester/10% spandex knit • Wicks moisture • Heat-sealed label • Half-zip pullover style • Raglan sleeves with contrast color inserts • Self-fabric cuffs • Dropped tail.

**4750 ADULT:** XS-3XL List Price **43.90** (Upcharge for 2XL-3XL)



1005|1006



#### APEX LONG SLEEVE CREW

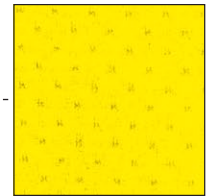
100% polyester wicking smooth knit • Odor resistant • Heat sealed label • Self-fabric collar and cuffs • Set-in sleeves.

**1005 ADULT:** S-3XL List Price **19.90** (Upcharge for 2XL-3XL)

**1006 YOUTH:** S-L List Price **17.30**



#### PINHOLE MESH PERFORMANCE FABRIC



Pinhole Mesh fabric provides unparalleled functionality with key high performance features and benefits.

1080



#### EXA LONG SLEEVE CREW

92% polyester/8% spandex wicking pinhole mesh • Heat sealed label • Self-fabric collar and cuffs • Set-in sleeves with shoulder inserts.

**1080 ADULT:** S-3XL List Price **21.00** (Upcharge for 2XL-3XL)



788|789



#### WICKING LONG SLEEVE T-SHIRT

100% polyester wicking knit • Heat sealed label • Self-fabric collar and cuffs • Set-in sleeves.

**788 ADULT:** S-3XL List Price **15.90** (Upcharge for 2XL-3XL)

**789 YOUTH:** S-L List Price **13.90**





9-INCH  
PRO CUT



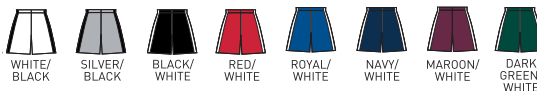
1400



#### STAFF SHORT

100% polyester wicking smooth knit • 100% polyester wicking mesh inserts • Odor resistant • Wicks moisture • Full-cut • Heat sealed label • Covered elastic waistband with inside drawcord • Side seam pockets • Contrast color side inserts • 9-inch inseam.

**1400 ADULT:** S-4XL List Price **21.00** (Upcharge for 2XL-4XL)



NEW

11-INCH  
(Youth Inseam Graded)



1470|1471



#### CYCLONE SHORT

100% polyester wicking smooth knit • 100% polyester wicking knit inserts • 100% polyester wicking mesh inserts • Odor resistant • Wicks moisture • Heat sealed label • Covered elastic waistband with inside drawcord • Side seam pockets • Contrast color side inserts • 11-inch inseam • Youth inseam graded.

**1470 ADULT:** S-3XL List Price **21.90** (Upcharge for 2XL-3XL)

**1471 YOUTH:** S-L List Price **19.90**



NEW

7-INCH  
(Youth Inseam Graded)  
PRO CUT



1425|1426



#### OCTANE SHORT

100% polyester wicking knit • Wicks moisture • Full-cut • Heat sealed label • Covered elastic waistband with inside drawcord • 7-inch inseam • Youth inseam graded.

**1425 ADULT:** S-3XL List Price **9.90** (Upcharge for 2XL-3XL)

**1426 YOUTH:** XS-L List Price **7.90**



9-INCH  
(Youth Inseam Graded)  
PRO CUT



1420|1421



#### TRAINING SHORT

100% polyester wicking knit • Wicks moisture • Full-cut • Heat sealed label • Covered elastic waistband with inside drawcord • 9-inch inseam • Youth inseam graded.

**1420 ADULT:** S-3XL List Price **10.50** (Upcharge for 2XL-3XL)

**1421 YOUTH:** S-L List Price **8.80**



9-INCH  
(Youth  
Inseam  
Graded)  
PRO CUT



848|849

PRO  
CUT

#### LONG TRICOT MESH SHORT/TRICOT LINED

Outer layer of 100% polyester tricot mesh • Inner layer of 100% polyester tricot lining  
• Full-cut • Elastic waistband with inside drawcord • 9-inch inseam • Youth inseam graded.

**848 ADULT:** S-5XL List Price **13.00** (Upcharge for 2XL-5XL)  
**849 YOUTH:** S-L List Price **11.90**



7-INCH  
(Youth  
Inseam  
Graded)  
PRO CUT



735|736

PRO  
CUT

#### WICKING MESH GAME SHORT

100% polyester wicking mesh • Full-cut • Covered elastic waistband with inside drawcord  
• Contrast color side panels • 7-inch inseam • Youth inseam graded.

**735 ADULT:** S-3XL List Price **17.90** (Upcharge for 2XL-3XL)  
**736 YOUTH:** S-L List Price **16.00**



9-INCH  
(Youth  
Inseam  
Graded)  
PRO CUT



SIDE  
SEAM  
POCKETS

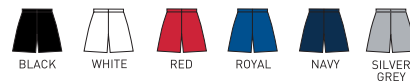
803|814

PRO  
CUT

#### LONGER LENGTH WICKING SHORT WITH POCKETS

100% polyester wicking mesh • Full-cut • Covered elastic waistband with inside drawcord  
• Side seam pockets • 9-inch inseam • Youth inseam graded.

**803 ADULT:** S-3XL List Price **19.90** (Upcharge for 2XL-3XL)  
**814 YOUTH:** S-L List Price **17.00**



9-INCH  
(Youth  
Inseam  
Graded)  
PRO CUT



802|809

PRO  
CUT

#### LONGER LENGTH WICKING MESH ATHLETIC SHORT

100% polyester wicking mesh • Full-cut • Covered elastic waistband with inside drawcord  
• 9-inch inseam • Youth inseam graded.

**802 ADULT:** S-4XL List Price **13.60** (Upcharge for 2XL-4XL)  
**809 YOUTH:** S-L List Price **11.70**



9-INCH  
(Youth  
Inseam  
Graded)  
PRO CUT



717|719

PRO  
CUT

#### DAZZLE/MESH SHORT

100% polyester dazzle fabric body and stripes with two layers of 100% polyester tricot mesh side inserts • Full-cut • Covered elastic waistband with inside drawcord • Contrast color mesh side inserts with accent dazzle stripes • 9-inch inseam • Youth inseam graded.

**717 ADULT:** S-3XL List Price **19.60** (Upcharge for 2XL-3XL)  
**719 YOUTH:** M-L List Price **18.00**





CONFORMS  
TO NFHS  
REGULATIONS

NEW



FULLY REVERSIBLE

968



966

NEW

1310

966



968

FULLY REVERSIBLE

### LADIES REVERSIBLE TRICOT MESH LACROSSE TANK

Two layers of 100% polyester tricot mesh • Ladies' fit • Fully reversible • Each layer has contrast color side panel • Waist length • Each layer hemmed separately for embellishment • Conforms to NFHS regulations.

**968 LADIES:** XXS/XS, S/M, L/XL, 2XL List Price **12.40**  
(Upcharge for 2XL)



BLACK/  
WHITE



RED/  
WHITE



ROYAL/  
WHITE



NAVY/  
WHITE



MAROON/  
WHITE



DARK  
GREEN/  
WHITE

966



### LADIES KILT

90% polyester/10% spandex knit • Odor resistant • Wicks moisture • Ladies' fit • Heat sealed label • Low rise • Covered elastic waistband • V-notch at sides.

**966 LADIES:** XS-2XL List Price **17.00**  
(Upcharge for 2XL)



BLACK

### PINHOLE MESH PERFORMANCE FABRIC



Pinhole Mesh fabric provides unparalleled functionality with key high performance features and benefits.

## benefits

- extremely soft feel
- full coverage breathability
- lightweight
- 4-way stretch flexibility

1310|1311



### LADIES HIT JERSEY

92% polyester/8 % spandex pinhole mesh • Wicks moisture • Ladies' fit • Heat sealed label • Contrasting self-fabric V-neck collar • Set-in sleeves • Contrasting side panel with white triangular insert at hem.

**1310 LADIES:** S-2XL List Price **17.00** (Upcharge for 2XL)  
**1311 GIRLS:** S-L List Price **15.00**



WHITE/  
BLACK/  
WHITE



RED/  
BLACK/  
WHITE



ORANGE/  
BLACK/  
WHITE



LIME/  
BLACK/  
WHITE



POWER  
PINK/  
BLACK/  
WHITE



POWER  
YELLOW/  
BLACK/  
WHITE



ROYAL/  
BLUE/  
WHITE



COLUMBIA  
BLUE/  
WHITE



BLACK/  
GOLD/  
WHITE



NAVY/  
GOLD/  
WHITE

**1350|1351**



#### LADIES STORM JERSEY

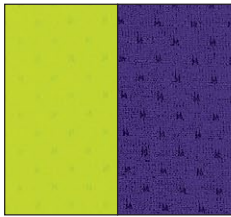
92% polyester/8% spandex pinhole mesh • Wicks moisture  
• Ladies' fit • Heat sealed label • Self-fabric V-neck collar  
• Contrast color piping on forward shoulder and side seam.

**1350 LADIES:** S-2XL List Price **13.90** (Upcharge for 2XL)

**1351 GIRLS:** S-L List Price **12.90**



#### PINHOLE MESH PERFORMANCE FABRIC



Pinhole Mesh fabric provides unparalleled functionality with key high performance features and benefits.

## benefits

- extremely soft feel
- full coverage breathability
- lightweight
- 4-way stretch flexibility

**1355|1356**



#### LADIES TORNADO JERSEY

92% polyester/8% spandex pinhole mesh • Wicks moisture  
• Ladies' fit • Heat sealed label • Contrast color self-fabric V-neck collar  
• Two-color triangular front panels at bottom hem.

**1355 LADIES:** S-2XL List Price **17.90** (Upcharge for 2XL)

**1356 GIRLS:** S-L List Price **15.90**



1355



966





1290

1292  
5-INCH  
(Girls  
Inseam  
Graded)

RACERBACK

1290|1291



#### LADIES INFERNO JERSEY

92% polyester/8% spandex pinhole mesh • Wicks moisture  
• Ladies' fit • Heat sealed label • Self-fabric V-neck collar  
• Contrast color triangular side panels with white piping  
• Racerback styling.

**1290 LADIES:** S-2XL List Price **17.10** (Upcharge for 2XL)  
**1291 GIRLS:** S-L List Price **15.10**



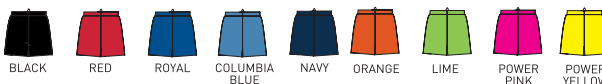
1292|1293



#### LADIES INFERNO SHORT

92% polyester/8% spandex pinhole mesh • Wicks moisture  
• Ladies' fit • Heat sealed label • Covered elastic waistband with inside drawcord • 5-inch inseam • Girls inseam graded.

**1292 LADIES:** S-2XL List Price **13.90** (Upcharge for 2XL)  
**1293 GIRLS:** S-L List Price **13.10**



#### PINHOLE MESH PERFORMANCE FABRIC



Pinhole Mesh fabric provides unparalleled functionality with key high performance features and benefits.

## benefits

- extremely soft feel
- full coverage breathability
- lightweight
- 4-way stretch flexibility



1300

751

1300|1301



#### LADIES MVP JERSEY

92% polyester/8% spandex pinhole mesh • Wicks moisture  
• Ladies' fit • Heat sealed label • Self-fabric V-neck collar  
• Raglan sleeves with contrast color inserts.

**1300 LADIES:** S-2XL List Price **17.20** (Upcharge for 2XL)  
**1301 GIRLS:** S-L List Price **15.20**



1280|1281



#### LADIES INFINITY JERSEY

90% polyester/10% spandex knit • 93% polyester/7% spandex mesh inserts • Odor resistant • Wicks moisture  
• Ladies' fit • Heat sealed label • Self-fabric binding at neck and armholes • White poly/spandex mesh shoulder inserts for breathability • Racerback styling.

**1280 LADIES:** S-2XL List Price **19.90** (Upcharge for 2XL)

**1281 GIRLS:** S-L List Price **17.90**



1285|1286



#### LADIES FINALIST SKORT

90% polyester/10% spandex knit • Odor resistant  
• Wicks moisture • Ladies' fit • Heat sealed label • Low rise  
• Covered elastic waistband • Contrast color trim at side seam and bottom • Matching inner short • V-notch at sides.

**1285 LADIES:** S-2XL List Price **27.90** (Upcharge for 2XL)

**1286 GIRLS:** S-L List Price **25.90**



1220|1221



#### LADIES CHALLENGE JERSEY

90% polyester/10% spandex knit • 93% polyester/7% spandex neck and mesh inserts • Odor resistant • Wicks moisture • Ladies' fit • Heat sealed label • White poly/spandex mesh V-neck collar • White poly/spandex mesh side inserts for breathability.

**1220 LADIES:** S-2XL List Price **21.90** (Upcharge for 2XL)

**1221 GIRLS:** S-L List Price **19.90**





1235

1238

NEW

5045

966

1235|1236



#### LADIES TRIUMPH JERSEY

100% polyester wicking smooth knit • 100% polyester wicking Duo Knit inserts • Odor resistant • Ladies' fit • Heat sealed label • Contrast color Duo Knit V-neck collar • Contrast color front and back Duo Knit inserts.

**1235 LADIES:** S-2XL List Price **17.90** (Upcharge for 2XL)  
**1236 GIRLS:** S-L List Price **15.90**



1238|1239



#### LADIES TRIUMPH SHORT

100% polyester wicking smooth knit • 100% polyester wicking Duo Knit inserts • Odor resistant • Ladies' fit • Heat sealed label • Covered elastic waistband with inside drawcord • Contrast color front and back Duo Knit inserts • 5-inch inseam • Girls inseam graded.

**1238 LADIES:** S-2XL List Price **17.60** (Upcharge for 2XL)  
**1239 GIRLS:** S-L List Price **15.50**



**create virtual samples**

quickly & easily create personalized custom flyers in a few simple steps. See pages 2-3 for details or visit [augustasportswear.com/marketingtools](http://augustasportswear.com/marketingtools) to start now!

5045|5046



#### LADIES MOTION JERSEY

100% polyester wicking smooth knit • Odor resistant • Wicks moisture • Ladies' fit • Heat sealed label • Self-fabric V-neck collar • Topstitched shoulder seams • Set-in sleeves • Contrast color piping on shoulder • Contrast color insert at sleeve hem.

**5045 LADIES:** S-2XL List Price **18.40** (Upcharge for 2XL)  
**5046 GIRLS:** S-L List Price **16.50**



1P



**1055|1056**



**LADIES PREMIER JERSEY**

100% polyester wicking smooth knit • 92% polyester/8% spandex pinhole mesh inserts • Odor resistant • Ladies' fit • Heat sealed label • Self-fabric V-neck collar • Topstitched shoulder seams • Set-in sleeves • Breathable contrast color pinhole mesh shoulder and front inserts.

**1055 LADIES:** S-2XL List Price **19.90** (Upcharge for 2XL)

**1056 GIRLS:** S-L List Price **17.90**



**1015|1016**



**LADIES ELITE JERSEY**

100% polyester wicking smooth knit • Odor resistant • Ladies' fit • Heat sealed label • Self-fabric V-neck collar • Topstitched shoulder seams • Set-in sleeves.

**1015 LADIES:** S-2XL List Price **14.90** (Upcharge for 2XL)

**1016 GIRLS:** S-L List Price **13.50**



**1204|1205**



**LADIES RALLY JERSEY**

100% polyester wicking smooth knit • Odor resistant • Ladies' fit • Heat sealed label • Self-fabric V-neck collar with accent piping at bottom • Set-in cap sleeves.

**1204 LADIES:** S-2XL List Price **15.90** (Upcharge for 2XL)

**1205 GIRLS:** S-L List Price **13.90**





966



#### LADIES KILT

90% polyester/10% spandex knit • Odor resistant • Wicks moisture • Ladies' fit • Heat sealed label • Low rise • Covered elastic waistband • V-notch at sides.

**966 LADIES:** XS-2XL List Price **17.00**  
(Upcharge for 2XL)



BLACK



751|752



#### LADIES POLY/SPANDEX TEAM SKORT

90% polyester/10% spandex knit • Odor resistant • Wicks moisture • Ladies' fit • Heat sealed label • Low rise • Covered elastic waistband • Matching inner short • V-notch at sides.

**751 LADIES:** S-2XL List Price **25.90** (Upcharge for 2XL)  
**752 GIRLS:** S-L List Price **23.90**



BLACK

WHITE

RED

ROYAL

NAVY



V-NOTCH

1285|1286



#### LADIES FINALIST SKORT

90% polyester/10% spandex knit • Odor resistant • Wicks moisture • Ladies' fit • Heat sealed label • Low rise • Covered elastic waistband • Contrast color trim at side seam and bottom • Matching inner short • V-notch at sides.

**1285 LADIES:** S-2XL List Price **27.90** (Upcharge for 2XL)  
**1286 GIRLS:** S-L List Price **25.90**



BLACK/WHITE

RED/WHITE

ROYAL/WHITE

NAVY/WHITE

MAROON/WHITE

PURPLE/WHITE

DARK GREEN/WHITE



742|743



#### LADIES POLY/SPANDEX 4" SHORT

90% polyester/10% spandex knit • Odor resistant • Wicks moisture • Ladies' fit • Heat sealed label • Flatlock seamed construction for extra comfort • Low rise • Covered elastic waistband • No side seams • Two-ply gusset • 4-inch inseam • Girls inseam graded.

**742 LADIES:** S-2XL List Price **15.80** (Upcharge for 2XL)  
**743 GIRLS:** S-L List Price **14.00**



BLACK

RED

ROYAL

NAVY



COMPANION TO  
STYLE 3710

3700



#### PREMIER JACKET

Outer shell of 100% polyester diamond tech • Lined with 100% polyester taffeta  
• Front zipper • Contrast color shoulder and front inserts • Set-in sleeves • Front pockets • Elastic cuffs • Open bottom.

**3700 ADULT:** XS-3XL List Price **41.90** (Upcharge for 2XL-3XL)



BLACK/  
WHITE



RED/  
WHITE



ROYAL/  
WHITE



NAVY/  
WHITE



MAROON/  
WHITE



DARK  
GREEN/  
WHITE



BLACK/  
RED



BLACK/  
ORANGE



BLACK/  
GOLD



ROYAL/  
GOLD



NAVY/  
GOLD



PURPLE/  
GOLD

AVAILABLE  
IN TALL\*



SIDE  
POCKETS

3705



#### SOLID PANT

Outer shell of 100% polyester diamond tech • Lined with 100% polyester taffeta and 100% polyester mesh • Covered elastic waistband with inside drawcord  
• Side seam pockets • Zipper on outside lower leg • Single-needle hemmed bottom.

**3705 ADULT:** XS-3XL List Price **37.90** (Upcharge for 2XL-3XL & Tall sizes)

**ADULT TALL:** LT-3XLT

\*Available in Tall



BLACK\*



RED



ROYAL



NAVY



MAROON



PURPLE



DARK  
GREEN

LADIES  
FIT



3710



#### LADIES PREMIER JACKET

Outer shell of 100% polyester diamond tech • Lined with 100% polyester taffeta  
• Ladies' fit • Front zipper • Contrast color shoulder and front inserts • Set-in sleeves  
• Front pockets • Elastic cuffs • Open bottom.

**3710 LADIES:** XS-2XL List Price **41.90** (Upcharge for 2XL)



BLACK/  
WHITE



RED/  
WHITE



ROYAL/  
WHITE



NAVY/  
WHITE



MAROON/  
WHITE



DARK  
GREEN/  
WHITE



BLACK/  
RED



BLACK/  
ORANGE



BLACK/  
GOLD



ROYAL/  
GOLD



NAVY/  
GOLD



PURPLE/  
GOLD

AVAILABLE  
IN TALL\*



SIDE  
POCKETS

3715



#### LADIES SOLID PANT

Outer shell of 100% polyester diamond tech • Lined with 100% polyester taffeta and 100% polyester mesh • Ladies' fit • Covered elastic waistband with inside drawcord  
• Side seam pockets • Zipper on outside lower leg • Single-needle hemmed bottom.

**3715 LADIES:** XS-2XL List Price **37.90** (Upcharge for 2XL & Tall sizes)

**LADIES TALL:** MT-2XLT

\*Available in Tall



BLACK\*



RED



ROYAL



NAVY



MAROON



PURPLE



DARK  
GREEN

to see our full outerwear/warmups offering visit us  
online at [augustasportswear.com](http://augustasportswear.com)





COMPANION TO  
STYLE 4392

SIDE SEAM  
POCKETS

## 4390|4391

### MEDALIST JACKET

Heavyweight 100% polyester brushed tricot • Front zipper • Contrast color inserts on front • Raglan sleeves • Front seam pockets • Elastic cuffs and bottom band.

**4390 ADULT:** S-2XL List Price **31.40** (Upcharge for 2XL)

**4391 YOUTH:** S-L List Price **29.70**



## 7755|7756

### MEDALIST PANT

Heavyweight 100% polyester brushed tricot • Covered elastic waistband with inside drawcord • Side seam pockets • Contrast color side inserts • Zipper on outside lower leg.

**7755 ADULT:** S-2XL List Price **29.10** (Upcharge for 2XL)

**7756 YOUTH:** S-L List Price **26.50**



LADIES  
FIT

SIDE SEAM  
POCKETS

## 4392

### LADIES MEDALIST JACKET

Heavyweight 100% polyester brushed tricot • Ladies' fit • Front zipper • Raglan sleeves • Contrast color inserts on front • Front seam pockets • Elastic cuffs • Open bottom.

**4392 LADIES:** S-2XL List Price **31.40** (Upcharge for 2XL)

**For Youth sizes, see style 4391.**



## 7752

### LADIES MEDALIST PANT

Heavyweight 100% polyester brushed tricot • Ladies' fit • Covered elastic waistband with inside drawcord • Side seam pockets • Contrast color side inserts • Zipper on outside lower leg.

**7752 LADIES:** S-2XL List Price **29.10** (Upcharge for 2XL)

**For Youth sizes, see style 7756.**

to see our full outerwear/warmups offering visit us  
online at [augustasportswear.com](http://augustasportswear.com)



## create virtual samples

quickly & easily create personalized custom flyers in a few simple steps. See pages 2-3 for details or visit [augustasportswear.com/marketingtools](http://augustasportswear.com/marketingtools) to start now!



**6085|6086|6087**



### WICKING ATHLETIC SOCKS

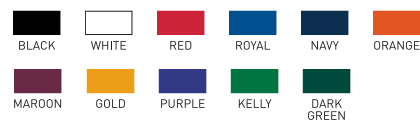
70% lucool wicking polyester/13% nylon/12% elastic/5% spandex  
• Knee-length tube sock • Cushioned toe, sole and heel.

**6085 ADULT:** 10-13

**6086 INTERMEDIATE:** 9-11

**6087 YOUTH:** 7-9

**Call for Pricing**



**6035|6030|6031**

### SOCCER SOCKS

80% acrylic/15% nylon/5% elastic • Knee-length tube sock with fold-down cuff • Fully cushioned foot.

**6035 ADULT:** 10-13

**6030 INTERMEDIATE:** 9-11

**6031 YOUTH:** 7-9

**Call for Pricing**



**6028|6026|6027**

**NEW COLORS**

### ATHLETIC SOCKS

80% acrylic/14% nylon/6% elastic • Knee-length tube sock • Fully cushioned foot.

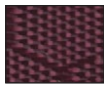
**6028 ADULT:** 10-13

**6026 INTERMEDIATE:** 9-11

**6027 YOUTH:** 7-9

**Call for Pricing**





FABRIC  
ZOOM



WRITABLE  
HANDLE  
WRAPPER



REMOVABLE  
POCKET

1745

1740

## 1740|1745

### FLARE DUFFEL

Shiny hexagon patterned polyester with PVC coating and 600-denier polyester with PVC coating • Zippered main compartment has large U-shaped opening with two zipper pulls • Zippered front pocket removes for easy embellishment • Inside zippered pocket • Side mesh pocket • Shoe pocket • Web handles with self-fabric handle wrapper • Adjustable and detachable shoulder strap • Writable inside handle wrapper.

**1740 MEDIUM:** 21"W x 9½"H x 10"D

**Call for Pricing**

**1745 LARGE:** 28"W x 12"H x 13"D



BOTTOM BALL  
COMPARTMENT



## 1770

### TRAVERSE BACKPACK

600-denier polyester with PVC coating • Zippered main compartment • Zippered compartment on bottom holds ball • Inside zippered pocket • Separate black mesh pockets on each side • Web handle at top, reinforced at stress points • Padded back for support and comfort • Adjustable padded shoulder straps.

**1770:** 12"W x 20"H x 8"D

**Call for Pricing**



## 1831

### TRI-COLOR BALL BACKPACK

600-denier polyester with PVC coating • Zippered main compartment with two zipper pulls • One angled white stripe on front sides • Separate black mesh zippered pockets on each side • Front black mesh pleated pocket with elastic binding holds ball • Black web handle, reinforced at stress points • Inside zippered pocket • Inside plastic key holder hook • Padded back for support and comfort • Padded shoulder straps with adjustable side tabs • Contrast white piping trim.

**1831:** 16½"W x 16½"H x 9"D

**Call for Pricing**



## 1750

### SHINY TEXTURE SLING BAG

600-denier polyester with PVC coating and nylon oxford inserts • Zippered main compartment with two zipper pulls and accent contrasting fabric • Inside media pocket with opening for earphones • Zippered pocket on shoulder strap • Cell phone pocket on shoulder strap • Black mesh pockets on sides • Black web handle at top, reinforced at stress points • Adjustable web straps at bottom for additional carrying capacity • Padded back for support and comfort with openings for stick • Zippered compartment on back • Adjustable padded shoulder strap • Adjustable web waist strap.

**1750:** 12½"W x 17½"H x 5½"D

**Call for Pricing**



to see our full offering of bags & accessories visit us  
online at [augustasportswear.com](http://augustasportswear.com)



unmatched reliability  
**team spirit.**

