

 HOLLOWAY®



2014

**+ NEW
SPRING
SPORTS
CATALOG**

HOLLOWAY GIVES YOU MORE...

Count on our team to help you win the race.

Holloway's full spectrum of benefits makes the sale for you. Advanced technology. Outstanding service and expertise. Unmatched product quality. Marketing support. Extensive resources. And many unexpected extras. Stay on the fast track with Holloway.



+ More of what your customers need

Breadth and depth of selections, deep color offering, unbeatable quality

+ A competitive edge

Latest trends, new styles, no-risk decoration, advanced technology, high-performance fabrics

+ Frustration-free ordering

Unmatched commitment to inventory, no minimum orders, dependable delivery

+ Long-term customer value

1-year quality guarantee, extended style life for easy fill-ins

+ A winning team

Extraordinary access to people, expertise, tools and resources, all focused on you

CONTENTS



- WHAT'S NEW 4
- TRACK 5
- BASEBALL 10
- COLLEGIATE YOUTH
REPLICA PROGRAM 20
- SOFTBALL 22
- TOPS 32
- SHORTS 41
- FLEECE 43
- OUTERWEAR/WARMUPS 46
 - Dual Purpose 48
 - Waterproof 54
 - Weather-Resistant 56
 - Knits 62
- ACCESSORIES 64
 - Bags 64
 - Socks 67
- DECORATION 68
- SIZING AND ORDER
INFORMATION 73

HOLLOWAYUSA.COM

Check inventory anytime, place orders 24/7, download images and get personalized marketing support.

ICONS AND STYLES

Look for these icons and others for special features and sizes.



Designates garments suitable for Sublimation decoration. See page 70 for more information.



Longer cut garments



Extra large sizes



Moisture evaporation and wicking



Body mapping for added flexibility and dry-Excel™ in key heat and sweat zones



4-Way stretch fabric



Custom braid options



Online access 24 hours a day, 7 days a week



Same day shipment on all blank in-stock Holloway orders placed by 6 p.m. EST

WHAT'S NEW



TRACK NEW Category –Track Uniforms!



ADULT VERTICAL SINGLET
221040 Page 6



ADULT APPROACH SHORT
221041 Page 6



LADIES' VERTICAL SINGLET
221340 Page 7



LADIES' APPROACH SHORT
221341 Page 7



ADULT SPRINTER SINGLET
221042/Youth 221242 Page 8



ADULT LEAD SHORT
221043/Youth 221243 Page 8



BASEBALL

SOFTBALL



LADIES' SPRINTER SINGLET
221342 Page 9



LADIES' BREAKLINE SHORT
221345 Page 9



ADULT ROCKET JERSEY
221016/Youth 221216 Page 11



LADIES' RISE JERSEY
221368/Girls' 221468 Page 23



LADIES' MERCY PANT
221373/Girls' 221473 Page 30



TOPS

ACCESSORIES



ADULT ERUPT SHIRT
228100/Youth 228200
Pages 12 & 33



LADIES' ERUPT SHIRT
228300 Pages 24 & 33



ADULT ACTIVATE SOCK
223810/Adult XL 223610/
Intermediate 223910/
Youth 223210 Page 67



ADULT COMPETE SOCK
223811/Intermediate 223911/
Youth 223211 Page 67



ADULT REACT SOCK
223812/Intermediate 223912/
Youth 223212 Page 67



YOUTH/GIRLS'

NEW Baseball
and Softball
Styles



YOUTH IGNITE JERSEY
221211 Page 15



YOUTH FIERCE JERSEY
221212 Page 15



YOUTH HAVOC PANT
221213 Page 19



GIRLS' REMATCH JERSEY
221459 Page 28



GIRLS' MAYHEM PANT
221465 Page 31



SWATCH BOOKS ARE NOW AVAILABLE FOR PURCHASE FROM
CUSTOMER SERVICE AT 800.331.5156. USE THIS CONVENIENT
TOOL TO SELL AND SHOWCASE EVERY FABRIC IN THE LINE.



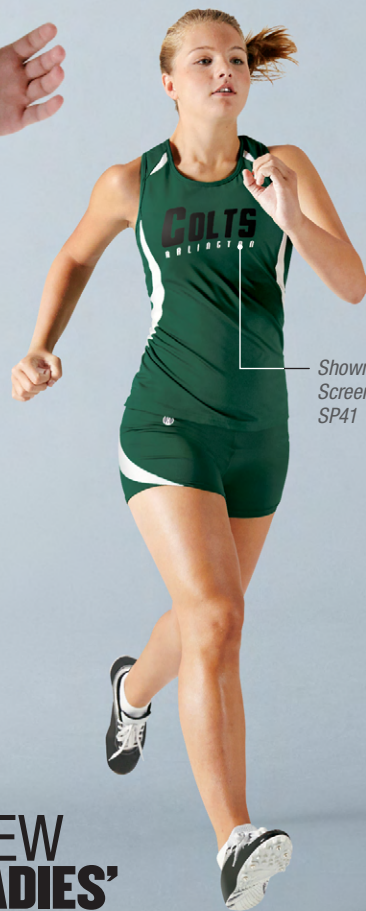
TRACK

**+ NEW
SPRINTER
SINGLET**
see page 8



Shown with
Screen Print
SP41

**+ NEW
LADIES'
SPRINTER
SINGLET**
see page 9



Shown with
Screen Print
SP41

**+ NEW
LEAD
SHORT**
see page 8

**+ NEW
LADIES'
BREAKLINE
SHORT**
see page 9

+ MICRO-INTERLOCK

• Dry-Excel™ Micro-Interlock has a smooth polyester surface with high mechanical stretch that includes superior wicking technology and an odor-resistant treatment.



Mesh panel for breathability



Track

Baseball

Softball

Tops

Shorts

Fleece

Outerwear/
Warmups

Accessories

Decoration

NEW VERTICAL SINGLET/ADULT 221040



- Stretch mesh side panels
- Tagless labeling for added comfort

221040 MSRP: \$25.00 ADULT XS-3X



NEW APPROACH SHORT/ADULT 221041



SEE PAGE 70 FOR
SUBLIMATION
DECORATION OPTIONS

- Stretch mesh side panels
- Coolmax™ polyester brief liner
- 5" inseam

221041 MSRP: \$25.00 ADULT XS-3X



MICRO-INTERLOCK



Shown with two-color Screen Print SP42. Recommended garment retail price with decoration, \$29.00



NEW

VERTICAL SINGLET/LADIES' 221340

dry-Excel

- Stretch mesh side panels
- Tagless labeling for added comfort

221340 MSRP: \$25.00 LADIES' XS-2X



Black/Lt Gold/White R21

Black/Scarlet/White R20

Black/White/White R30

Dk Maroon/Black/White T14

Forest/Black/White 148

Orange/Black/White 322

Purple/Black/White 497

Royal/Black/White 526

Scarlet/Black/White 952

True Navy/White/White F94

White/White/White X25

NEW

APPROACH SHORT/LADIES' 221341

dry-Excel

- Stretch mesh side panels
- Coolmax™ polyester brief liner
- 2.5" inseam

221341 MSRP \$25.00 LADIES' XS-2X



SEE PAGE 70 FOR SUBLIMATION DECORATION OPTIONS



Black/Lt Gold/White R21

Black/Scarlet/White R20

Black/White/White R30

Dk Maroon/Black/White T14

Forest/Black/White 148

Orange/Black/White 322

Purple/Black/White 497

Royal/Black/White 526

Scarlet/Black/White 952

True Navy/White/White F94

White/White/White X25

Track
Baseball
Softball
Tops
Shorts
Fleece
Outerwear/Warmups
Accessories
Decoration

MICRO-INTERLOCK

Track

Baseball

Softball

Tops

Shorts

Fleece

Outerwear/
Warmups

Accessories

Decoration



Shown with two-color
Screen Print SP9.
Recommended garment
retail price with
decoration, \$29.00

NEW SPRINTER SINGLET

ADULT 221042/YOUTH 221242

dry-Excel

- Stretch mesh side panels
- Tagless labeling for added comfort

221042 MSRP: \$23.00 ADULT S-2X
221242 MSRP: \$21.00 YOUTH M-XL



Black/
White
420

Dk Maroon/
White
T41

Forest/
White
436

Kelly/
White
340

Orange/
White
320

Purple/
White
450

Royal/
White
280

Scarlet/
White
408

True Navy/
White
F90

NEW LEAD SHORT/ADULT 221043/YOUTH 221243

dry-Excel

- Stretch mesh side panels
- Coolmax™ polyester brief liner
- Inseams: Adult 5", Youth 4"

221043 MSRP: \$23.00 ADULT S-2X
221243 MSRP: \$21.00 YOUTH M-XL



Black/
White
420

Dk Maroon/
White
T41

Forest/
White
436

Kelly/
White
340

Orange/
White
320

Purple/
White
450

Royal/
White
280

Scarlet/
White
408

True Navy/
White
F90



+ 4-WAY STRETCH

• Dry-Excel™ 4-Way Stretch has a smooth polyester/spandex surface with high stretch for extended range of motion and wicking technology with an odor-resistant treatment.

NEW SPRINTER SINGLET/LADIES' 221342

dry-Excel

- Body fabric 90% polyester, 10% spandex
- Stretch mesh side panels
- Racerback design
- Tagless labeling for added comfort

221342 MSRP: \$30.00 LADIES' XS-2X



SLIM FIT



Black/White 420 Dk Maroon/White T41 Forest/White 436 Kelly/White 340 Orange/White 320 Purple/White 450 Royal/White 280 Scarlet/White 408 True Navy/White F90

NEW BREAKLINE SHORT/LADIES' 221345

dry-Excel

- Body fabric 90% polyester, 10% spandex
- Stretch mesh side panels
- Flatlock stitching reduces skin abrasion
- 3.5" inseam

221345 MSRP: \$25.00 LADIES' XS-2X



SLIM FIT

Coordinating Shorts



Adult 221043/
Youth 221243
page 8



Ladies' 229355
page 42



Black/White 420 Dk Maroon/White T41 Forest/White 436 Kelly/White 340 Orange/White 320 Purple/White 450 Royal/White 280 Scarlet/White 408 True Navy/White F90

Track

Baseball

Softball

Tops

Shorts

Fleece

Outerwear/
Warmups

Accessories

Decoration

BASEBALL



Shown with
Full-Size
Embroidery FS48

**RECRUIT
PULLOVER**
see page 51

**HAVOC
PANT**
see page 19

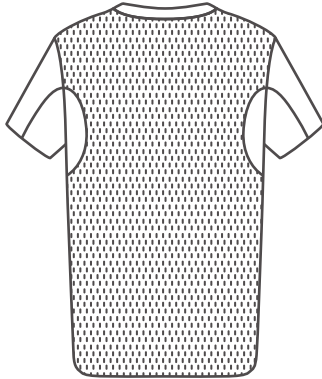
**+ NEW
YOUTH
IGNITE
JERSEY**
see page 15



**+ NEW
YOUTH
HAVOC
PANT**
see page 19

+ MICRO-INTERLOCK

- Dry-Excel™ Micro-Interlock has a smooth polyester surface with high mechanical stretch that includes superior wicking technology and an odor-resistant treatment.



Ventilated back for light-weight performance



Shown with Sublimated template SB26 and image SN16. Recommended garment retail price with decoration, \$61.00

Pair with Blue Grey or White pants

NEW

ROCKET JERSEY/ADULT 221016/YOUTH 221216



- Dry-Excel™ Pin-Dot Performance knit polyester collar and inserts
- Blown-out back and front inserts with dry-Excel™ micromesh provides ventilation
- Two-button placket
- Tagless labeling for added comfort

221016 MSRP: \$29.00 ADULT S-3X

221216 MSRP: \$27.00 YOUTH S-XL



Track

Baseball

Softball

Tops

Shorts

Fleece

Outerwear/Warmups

Accessories

Decoration

+ STOCK SUBLIMATION

Track

Baseball

Softball

Tops

Shorts

Fleece

Outerwear/
Warmups

Accessories

Decoration



Screen Print Decoration Instructions

- + Recommend not to exceed 320 degree oven temperature
- + Oven Dwell Time should be minimized to facilitate reaching only the specified ink cure temperature
- + Use a reputable Plastisol ink, such as One Stroke brand
- + Utilize 2 strokes of an UB (under base) Base coat
- + Use 2 strokes of ink when printing the design

NEW
ERUPT SHIRT dry-Excel™ **BIG** 4x
ADULT 228100/YOUTH 228200

- 100% dry-Excel™ polyester
- Semi-fitted style
- Defined by its bold All-Over Sublimation print
- Modern Camo design

228100 MSRP: \$21.00 ADULT S-4X
228200 MSRP: \$19.00 YOUTH S-L



Bright Yellow/Black
U65



Graphite/Black
172



Orange/Black
321



Royal/Black
289



Scarlet/Black
406



True Navy/Black
F92



Vegas Gold/Black
252



White/Black
226



+ PIN-DOT PERFORMANCE KNIT

- Dry-Excel™ Pin-Dot Performance knit is a polyester fabric with moisture wicking and soil-release treatment for easier garment care.



Shown with two-color Screen Print front name/number and back number. Recommended garment retail price with decoration, \$61.00

CONTENDER JERSEY ADULT 221015/YOUTH 221215



- Dry-Excel™ Pin-Dot Performance knit with Blue Grey and White inserts
- Matching self-collar
- Single button placket
- Raglan sleeve for maximum mobility
- Contoured bottom hem for secure low-bulk tuck-in

221015 MSRP: \$37.50 ADULT S-3X
221215 MSRP: \$35.50 YOUTH S-L

Pair with Blue Grey or White pants



HOLLOWAY BASEBALL
221015 & 221013

221015 - CONTENDER
Name: [Blank]
Color: [Blank]

221007 - CORE
Name: [Blank]
Color: [Blank]

221013 - HAVOC
Name: [Blank]
Color: [Blank]

Make the sale easier using our Team Builder at hollowayusa.com.

PIN-DOT PERFORMANCE KNIT

Track

Baseball

Softball

Tops

Shorts

Fleece

Outerwear/
Warmups

Accessories

Decoration



Full button front

Two-button placket



Black/White 420
Forest/White 436
Maroon/White 380
Navy/White 301
Orange/White 320



Black/White 420
Cardinal/White 409
Forest/White 436
Kelly/White 340
Lt Gold/White 752
Maroon/White 380
Navy/White 301



Purple/White 450
Royal/White 280
Scarlet/White 408
Blue Grey/Black 561



Orange/White 320
Purple/White 450
Royal/White 280
Scarlet/White 408
Vegas Gold/White 250
Blue Grey/Black 561
White/Black 226

OCTANE JERSEY/ADULT 221000/YOUTH 221200



- Raglan sleeves for maximum mobility
- Dry-Excel™ Pin-Dot Performance knit inserts
- Contoured bottom hem for secure and low-bulk tuck-in

221000 MSRP: \$42.50 ADULT S-3X
221200 MSRP: \$40.50 YOUTH S-L

RAZOR JERSEY/ADULT 221001/YOUTH 221201



- Dry-Excel™ Pin-Dot Performance knit inserts
- Contoured bottom hem for secure and low-bulk tuck-in

221001 MSRP: \$37.50 ADULT S-3X
221201 MSRP: \$35.50 YOUTH S-L

+ DOUBLE KNIT

- Dry-Excel™ Performance double knit is a 15 oz. polyester with wicking and soil-release properties that are optimized for performance conditions.
- Revolutionary fabric technology features tough filament surface yarns for durability and abrasion-resistance while having soft spun inside yarns for comfort next to the skin.

IGNITE JERSEY ADULT 221011/NEW YOUTH 221211



- Faux placket full button front for easier decorating and reduced bulk
- Contoured bottom hem for secure and low-bulk tuck-in

221011 MSRP: \$40.00 ADULT XS-3X
221211 MSRP: \$38.00 YOUTH S-XL



**NEW
YOUTH
SIZING**



**WHITE
UNIFORMS ARE
PERFECT FOR
SUBLIMATING
TEAM NAMES
AND NUMBERS.**



FIERCE JERSEY ADULT 221012/NEW YOUTH 221212



- Faux placket full button front for easier decorating and reduced bulk
- Contoured bottom hem for secure and low-bulk tuck-in

221012 MSRP: \$35.50 ADULT XS-3X
221212 MSRP: \$33.50 YOUTH S-XL

*Faux placket
for easier
decorating*



*Micromesh
breathable inserts*

**NEW
YOUTH
SIZING**



**WHITE UNIFORMS ARE PERFECT FOR
SUBLIMATING TEAM NAMES AND NUMBERS.**

Track

Baseball

Softball

Tops

Shorts

Fleece

Outerwear/
Warmups

Accessories

Decoration

DOUBLE KNIT

Track

Baseball

Softball

Tops

Shorts

Fleece

Outerwear/
Warmups

Accessories

Decoration



Blue Grey
053



White
005

Micromesh
breathable inserts
along heat zones

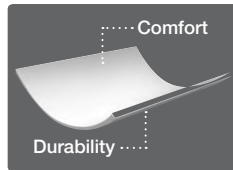


Shown
with Custom
Braid Option
See page 72
for custom
braid options
and pricing.



White
005

Revolutionary Fabric Technology



Blue Grey
053

GRANDSLAM JERSEY ADULT 221009/YOUTH 221209



- Full button front, spaced for decoration
- Contoured bottom hem for secure and low-bulk tuck-in

221009 MSRP: \$35.50 ADULT S-3X
221209 MSRP: \$33.50 YOUTH S-L

SHUT-OUT JERSEY ADULT 221010/YOUTH 221210



- Full button front, spaced for decoration
- Contoured bottom hem for secure and low-bulk tuck-in

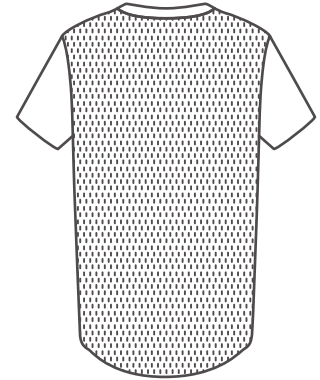
221010 MSRP: \$31.00 ADULT S-3X
221210 MSRP: \$29.00 YOUTH S-L

+ 4-WAY STRETCH

• Dry-Excel™ 4-Way Stretch has a smooth polyester/spandex surface with high stretch for extended range of motion and wicking technology with an odor-resistant treatment.



Single-button placket



Stretch micromesh ventilated back for breathability and comfort

DIAMOND JERSEY ADULT 221008



- Nylon/spandex dry-Excel™ 4-Way Stretch on knit colors
- Dry-Excel™ 4-Way Stretch polyester/spandex knit White and Blue Grey
- Contoured bottom hem for secure and low-bulk tuck-in

221008 MSRP: \$40.00 ADULT XS-3X



Black 080 Blue Grey 053 Forest 038 Maroon 045 Navy 065 Purple 050 Royal 060 Scarlet 083 White 005

+ SOF-TEC™

• Dry-Excel™ Sof-tec™ has a lightly brushed polyester/spandex surface with high stretch for extended range of motion and wicking properties for performance conditions.

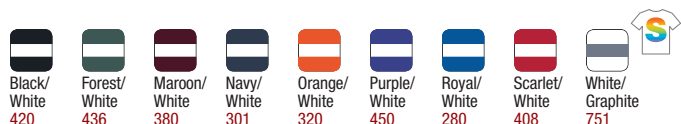


VAPOR SHIRT/ADULT 222447



- Contrasting flatlock stitching reduces skin abrasion
- Raglan sleeves for maximum mobility
- Tagless labeling for added comfort

222447 MSRP: \$27.00 ADULT XS-3X



Black/White 420 Forest/White 436 Maroon/White 380 Navy/White 301 Orange/White 320 Purple/White 450 Royal/White 280 Scarlet/White 408 White/Graphite 751

Track

Baseball

Softball

Tops

Shorts

Fleece

Outerwear/
Warmups

Accessories

Decoration

MICRO-INTERLOCK

• Dry-Excel™ Micro-Interlock has a smooth polyester surface with high mechanical stretch that includes superior wicking technology and an odor-resistant treatment.

EXULT SHIRT ADULT 222471/YOUTH 222271

- Tagless labeling for added comfort

222471 MSRP: \$28.00 ADULT S-3X
222271 MSRP: \$25.00 YOUTH S-L



Breathable micromesh inserts



Black/Lt Gold/White R21 Black/Orange/White 611 Black/Scarlet/White R20 Dk Maroon/Black/White T14 Forest/Black/White 148 Graphite/Black/White U73

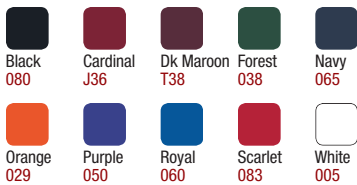


Navy/Graphite/White 371 Navy/Lt Gold/White S30 Purple/Black/White 497 Royal/Black/White 526 Royal/Lt Gold/White S70 Scarlet/Black/White 952

STREAK SHIRT ADULT 222463/YOUTH 222263

- Matching self-collar
- Two-button placket
- Tagless labeling for added comfort

222463 MSRP: \$20.00 ADULT S-3X
222263 MSRP: \$18.00 YOUTH S-L



Black 080 Cardinal J36 Dk Maroon T38 Forest 038 Navy 065
Orange 029 Purple 050 Royal 060 Scarlet 083 White 005



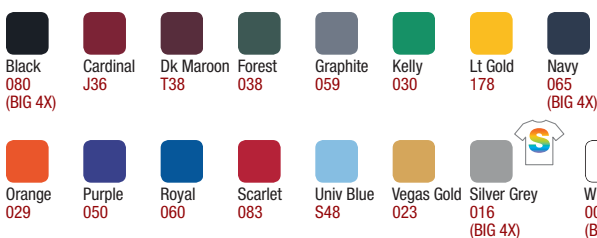
Semi-fitted style

Wicking and odor-resistant dry-Excel knit

ZOOM SHIRT ADULT 222449/YOUTH 222249

- Semi-fitted style
- Tagless labeling for added comfort

222449 MSRP: \$11.50 ADULT S-3X, SELECT COLORS S-4X
222249 MSRP: \$10.50 YOUTH S-L



Black 080 (BIG 4X) Cardinal J36 Dk Maroon T38 Forest 038 Graphite 059 Kelly 030 Lt Gold 178 Navy 065 (BIG 4X)
Orange 029 Purple 050 Royal 060 Scarlet 083 Univ Blue S48 Vegas Gold 023 Silver Grey 016 (BIG 4X) White 005 (BIG 4X)



NEW LOWER PRICE



Same Day Shipment

Track

Baseball

Softball

Tops

Shorts

Fleece

Outerwear/
Warmups

Accessories

Decoration

+ DOUBLE KNIT

- Dry-Excel™ Performance double knit is a 15 oz. polyester with wicking and soil-release properties that are optimized for performance conditions.
- Revolutionary fabric technology features tough filament surface yarns for durability and abrasion-resistance while having soft spun inside yarns for comfort next to the skin.

HAVOC PANT ADULT 221013/ NEW YOUTH 221213



- Wide leg and open bottom
- 4-Way Stretch inserts for non-restricted movement
- Gripper anti-roll elasticized waist with seven pro-cut tunnel loops
- Double snap front with brass YKK® zipper fly
- Easy-entry back pockets
- Dual-ply knee protection
- Reinforced topstitching for enhanced seam strength
- 33" inseam, hemmed

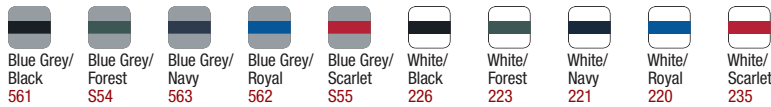
221013 MSRP: \$52.00 ADULT S-3X
221213 MSRP: \$50.00 YOUTH S-XL



Stretch inserts
Relaxed fit
Ventilated gusset

**NEW
YOUTH
SIZING**

**NEW
SOCKS NOW
AVAILABLE!**
see page 67



Shown with Custom Braid Option
see page 72 for details

PHENOM PANT ADULT 221014/YOUTH 221214



- Wide leg and open bottom
- Gripper anti-roll elasticized waist with seven pro-cut tunnel loops
- Double snap front with brass YKK® zipper fly
- Easy-entry back pockets
- Dual-ply knee protection
- Reinforced topstitching for enhanced seam strength
- Inseams, hemmed: Adult L 33", Youth L 27"

221014 MSRP: \$46.00 ADULT S-3X
221214 MSRP: \$44.00 YOUTH S-XL

CORE BELT/ADULT 221007

- Genuine leather tabs and rugged metal hardware for premium quality and long-lasting performance
- Plush elasticized center stretches for non-restricted movement
- 1-1/2" width
- Adjusts for waist sizes 22"-48"

221007 MSRP: \$7.00 ONE SIZE ADJUSTABLE



Order online at hollowayusa.com

Track

Baseball

Softball

Tops

Shorts

Fleece

Outerwear/
Warmups

Accessories

Decoration

CYRP

COLLEGIATE
YOUTH REPLICA
PROGRAM



NEW
LOWER
PRICES



All jerseys feature
wicking and
odor-resistance

Shown as
Michigan 779

BALL PARK JERSEY/YOUTH 228263/ADULT 228463

dry-
Excel

- Semi-fitted style
- Matching self-collar
- Two-button placket
- Tagless labeling for added comfort

228263 MSRP: \$25.00 YOUTH S-L
228463 MSRP: \$27.50 ADULT S-3X

Prices include front team name decoration only.



Shown as
Miami 778



NEW

ADD NAME AND
NUMBERS ON BACK
OF ALL CYR JERSEYS.

MSRP: \$10.00

See Digital Precision
Print for details in
Net Price Guide.



Shown as
Georgia 774

ROOKIE JERSEY/YOUTH 228249/ADULT 228449

dry-
Excel

- Semi-fitted style
- Tagless labeling for added comfort

228249 MSRP: \$22.00 YOUTH S-L
228449 MSRP: \$25.00 ADULT S-3X

Prices include front team name decoration only.

CURVE JERSEY/GIRLS' 228253/LADIES' 228353

dry-
Excel

- Semi-fitted style
- Tagless labeling for added comfort

228253 MSRP: \$20.50 GIRLS' S-L
228353 MSRP: \$22.50 LADIES' S-2X

Prices include front team name decoration only.

Track

Collegiate
Youth Replica

Softball

Tops

Shorts

Fleece

Outerwear/
Warmups

Accessories

Decoration

COLLEGIATE YOUTH REPLICA PROGRAM DECORATIONS

Not intended for retail sales.

Size of Designs – 10"



Alabama 768



Arizona 797



Arizona State 769



Arkansas 798



Auburn 770



Clemson 788



Colorado State 790



Florida 772



Florida State 773



Georgia 774



Georgia Tech 791



Illinois 799



Kansas 775



Kansas State 792



Kentucky 776



LSU 777



Maryland 800



Miami 778



Michigan 779



Nebraska 801



Notre Dame 789



Oklahoma State 794



Pepperdine 795



South Carolina 784



Tennessee 785



Texas A&M 786



Texas Tech 796



Washington 787



Wisconsin 802



PAIR ANY OF OUR TEAM-DECORATED JERSEYS WITH A VISOR OR CAP FROM OUTDOOR CAP

Contact your sales rep for Outdoor Cap order information or call direct 800.826.6047.

Indicates available visor Indicates available cap

Track

Collegiate Youth Replica

Softball

Tops

Shorts

Fleece

Outerwear/Warmups

Accessories

Decoration

SOFTBALL



+ NEW LADIES' RISE JERSEY
see page 23

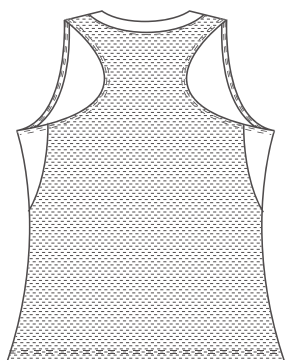
+ NEW GIRLS' REMATCH JERSEY
see page 28

+ NEW GIRLS' MAYHEM PANT
see page 31

+ NEW LADIES' MERCY PANT
see page 30

MICRO-INTERLOCK

- Dry-Excel™ Micro-Interlock has a smooth polyester surface with high mechanical stretch and includes superior wicking technology and an odor-resistant treatment.



Ventilated back for light-weight performance



Sleeveless



Racerback design

NEW

RISE JERSEY/LADIES' 221368/GIRLS' 221468



- Dry-Excel™ Pin-Dot Performance knit polyester collar and inserts
- Blown-out back and front inserts with dry-Excel™ micromesh provides ventilation
- Extended body length for secure tuck-in
- Tagless labeling for added comfort

221368 MSRP: \$28.00 LADIES' S-2X

221468 MSRP: \$26.00 GIRLS' S-XL



Black/Blue Grey/White
U33



Dk Maroon/Black/White
T14



Forest/Black/White
148



Lt Gold/Black/White
T61



Orange/Black/White
322



Purple/Black/White
497



Royal/Black/White
526



Scarlet/Black/White
952



True Navy/Blue Grey/White
F93



White/Blue Grey/Black
U72



Track

Baseball

Softball

Tops

Shorts

Fleece

Outerwear/
Warmups

Accessories

Decoration

+ STOCK SUBLIMATION

Track

Baseball

Softball

Tops

Shorts

Fleece

Outerwear/
Warmups

Accessories

Decoration



Screen Print Decoration Instructions

- + Recommend not to exceed 320 degree oven temperature
- + Oven Dwell Time should be minimized to facilitate reaching only the specified ink cure temperature
- + Use a reputable Plastisol ink, such as One Stroke brand
- + Utilize 2 strokes of an UB (under base) Base coat
- + Use 2 strokes of ink when printing the design

NEW

ERUPT SHIRT/LADIES' 228300

dry-
Excel

- 100% dry-Excel™ polyester
- Semi-fitted style
- Defined by bold All-Over Sublimation print
- Modern Camo design

228300 MSRP: \$21.00 LADIES' XS-2X



Bright Yellow/
Black U65



Graphite/
Black 172



Orange/
Black 321



Power Pink/
Black 462



Royal/
Black 289



Scarlet/
Black 406



True Navy/
Black F92



White/
Black 226



PIN-DOT PERFORMANCE KNIT

- Dry-Excel™ Pin-Dot Performance knit is a polyester fabric with moisture wicking and soil-release treatment for easier garment care.

BLAZE JERSEY/LADIES' 221369

dry-Excel

- Faux placket full button front for easier decorating and reduced bulk
- Contoured bottom hem for secure and low-bulk tuck-in

221369 MSRP: \$39.50 LADIES' XS-2X



Black/White 420 Forest/White 436 Kelly/White 340 Lt Gold/White 752 Maroon/White 380 Navy/White 301



Orange/White 320 Purple/White 450 Royal/White 280 Scarlet/White 408 Vegas Gold/White 250 White/White 230

ELIMINATOR JERSEY/LADIES' 221360

dry-Excel

- Sleeveless styling
- Contoured bottom hem for secure and low-bulk tuck-in

221360 MSRP: \$37.50 LADIES' XS-2X



Black/White 420 Forest/White 436 Maroon/White 380 Navy/White 301



Purple/White 450 Royal/White 280 Scarlet/White 408 White/White 230



Racerback design



Track

Baseball

Softball

Tops

Shorts

Fleece

Outerwear/
Warmups

Accessories

Decoration

PIN-DOT PERFORMANCE KNIT



Track

Baseball

Softball

Tops

Shorts

Fleece

Outerwear/
Warmups

Accessories

Decoration

RAGE JERSEY/LADIES' 221361

dry-Excel

- Two-button placket
- Contoured bottom hem for secure and low-bulk tuck-in

221361 MSRP: \$37.50 LADIES' XS-2X

Two-button placket



Black/White 420 Forest/White 436 Kelly/White 340 Lt Gold/White 752



Maroon/White 380 Navy/White 301 Orange/White 320 Purple/White 450



Royal/White 280 Scarlet/White 408 Vegas Gold/White 250 White/White 230

FINISHER SHORT/LADIES' 221363

dry-Excel

- Covered elasticized drawstring waist
- 5" inseam

221363 MSRP: \$28.00 LADIES' XS-2X



Black/White 420 Forest/White 436 Kelly/White 340 Lt Gold/White 752



Maroon/White 380 Navy/White 301 Orange/White 320 Purple/White 450



Royal/White 280 Scarlet/White 408 Vegas Gold/White 250 White/White 230

5" inseam



Looks great with Blaze or Eliminator Jersey also!

+ DOUBLE KNIT

- Dry-Excel™ Performance double knit is a 15 oz. polyester with wicking and soil-release properties that are optimized for performance conditions.
- Revolutionary fabric technology features tough filament surface yarns for durability and abrasion-resistance while having soft spun inside yarns for comfort next to the skin.



Custom Braid Options and Pricing see page 72

Micromesh breathable inserts

Blue Grey 053

White 005

Black 080
Shown with Custom Braid Option **CB**

HOMEPLATE JERSEY LADIES' 221367

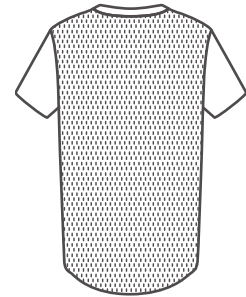


- Full button front, spaced for decoration
- Contoured bottom hem for secure and low-bulk tuck-in

221367 MSRP: \$35.50 LADIES' XS-2X

+ 4-WAY STRETCH

- Dry-Excel™ 4-Way Stretch has a smooth polyester/spandex surface with high stretch for extended range of motion and wicking technology with an odor-resistant treatment.



Stretch micromesh ventilated back for breathability

ENERGY JERSEY/LADIES' 221366



- Nylon/spandex dry-Excel™ Fresh 4-Way Stretch knit for colors
- Dry-Excel™ Fresh 4-Way Stretch in polyester/spandex knit for White and Blue Grey
- Contoured bottom hem for secure and low-bulk tuck-in

221366 MSRP: \$40.00 LADIES' XS-2X



Track

Baseball

Softball

Tops

Shorts

Fleece

Outerwear/
Warmups

Accessories

Decoration

+ MICRO-INTERLOCK

• Dry-Excel™ Micro-Interlock has a smooth polyester surface with high mechanical stretch and includes superior wicking technology and an odor-resistant treatment.



Black/Lt Gold R16
Black/Orange 423
Black/Scarlet 500
Black/Vegas Gold 255



Black/White 420
Dk Maroon/White T41
Forest/White 436
Navy/Lt Gold S28
Navy/White 301



Navy/Vegas Gold 256
Purple/White 450
Royal/Lt Gold S67
Royal/White 280
Scarlet/White 408

Breathable micromesh inserts

Contoured bottom hem

REMATCH JERSEY LADIES' 221359

NEW GIRLS' 221459



- Contrast piping
- V-neckline
- Contoured bottom hem for secure and low-bulk tuck-in

221359 MSRP: \$31.00 LADIES' XS-2X
221459 MSRP: \$29.00 GIRLS' S-XL

NEW GIRLS' SIZING

Track

Baseball

Softball

Tops

Shorts

Fleece

Outerwear/Warmups

Accessories

Decoration

EXULT SHIRT/LADIES' 222371



- V-neckline
- Extended body length for secure tuck-in
- Tagless labeling for added comfort

222371 MSRP: \$28.00 LADIES' XS-2X

Black/Lt Gold/White R21
Black/Orange/White 611
Black/Scarlet/White R20
Dk Maroon/Black/White T14
Forest/Black/White 148
Graphite/Black/White U73

Navy/Graphite/White 371
Navy/Lt Gold/White S30
Purple/Black/White 497
Royal/Black/White 526
Royal/Lt Gold/White S70
Scarlet/Black/White 952



Breathable micromesh inserts

Pair our Ladies' Hustle Short with any jersey! see page 29

ZOOM SHIRT/LADIES' 222349



- Semi-fitted style
- V-neckline and raglan sleeves
- Tagless labeling for added comfort

222349 MSRP: \$11.50 LADIES' XS-2X

Black 080
Dk Maroon T38
Forest 038
Graphite 059
Lt Gold 178
Navy 065
Orange 029

Power Pink 809
Purple 050
Royal 060
Scarlet 083
Univ Blue S48
Silver Grey 016
White 005



NEW LOWER PRICE



MICRO-INTERLOCK

FLEX SHIRT/LADIES' 222353/GIRLS' 222253



- Semi-fitted style
- V-neckline
- Tagless labeling for added comfort

222353 MSRP: \$16.00 LADIES' XS-2X
222253 MSRP: \$13.00 GIRLS' S-L



HUSTLE SHORT/LADIES' 229355



- Covered, elasticized drawstring waist
- 5" inseam

229355 MSRP: \$15.00 LADIES' XS-2X



New color True Navy added to match new uniform tops and meet SGMA standards. True Navy is a lighter shade than our existing Navy.

Flatlock stitching on waistband



+ HEATHERED MICRO-INTERLOCK

• Dry-Excel™ Heathered Micro-Interlock has a smooth polyester surface with high mechanical stretch and includes moisture wicking properties for performance conditions.

ELECTRIFY SHIRT/LADIES' 222372



- Semi-fitted style
- V-neckline
- Tagless labeling for added comfort

222372 MSRP: \$16.50 LADIES' XS-2X



Built-in wicking technology

Track

Baseball

Softball

Tops

Shorts

Fleece

Outerwear/
Warmups

Accessories

Decoration

+ DOUBLE KNIT

- Dry-Excel™ Performance double knit is a 15 oz. polyester with wicking and soil-release properties that are optimized for performance conditions.
- Revolutionary fabric technology features tough filament surface yarns for durability and abrasion-resistance while having soft spun inside yarns for comfort next to the skin.

NEW

MERCY PANT
LADIES' 221373/GIRLS' 221473

dry-Excel

CB

- Gripper elasticized waist with seven pro-cut tunnel loops
- Double snap front with brass YKK® zipper fly
- Easy-entry back pockets
- Dual-ply knee protection
- Reinforced topstitching for enhanced seam strength
- 18.5" inseam with elasticized bottom hem

221373 MSRP: \$35.00 LADIES' S-2X

221473 MSRP: \$33.00 GIRLS' S-XL

Track

Baseball

Softball

Tops

Shorts

Fleece

Outerwear/
Warmups

Accessories

Decoration

Low rise



Black
080



Blue Grey
053



White
005

NEW KNEE-LENGTH INSEAM 18.5"

MAYHEM PANT
LADIES' 221365

NEW GIRLS' 221465



- Gripper anti-roll elasticized waist with seven pro-cut tunnel loops
- Double snap front with brass YKK® zipper fly
- Easy-entry back pockets
- Dual-ply knee protection
- Reinforced topstitching for enhanced seam strength
- 24" inseam with elasticized bottom hem

221365 MSRP: \$37.50 LADIES' XS-2X

221465 MSRP: \$35.50 GIRLS' S-XL

DOUBLE KNIT

NEW GIRLS' SIZING



Blue Grey
053

White
005

Black
080

CORE BELT/ADULT 221007

- Genuine leather tabs and rugged metal hardware for premium quality and long-lasting performance
- Plush elasticized center stretches for non-restricted movement
- 1-1/2" width
- Adjusts for waist sizes 22"-48"

221007 MSRP: \$7.00 ONE SIZE ADJUSTABLE



Track

Baseball

Tops

Shorts

Fleece

Outerwear/
Warmups

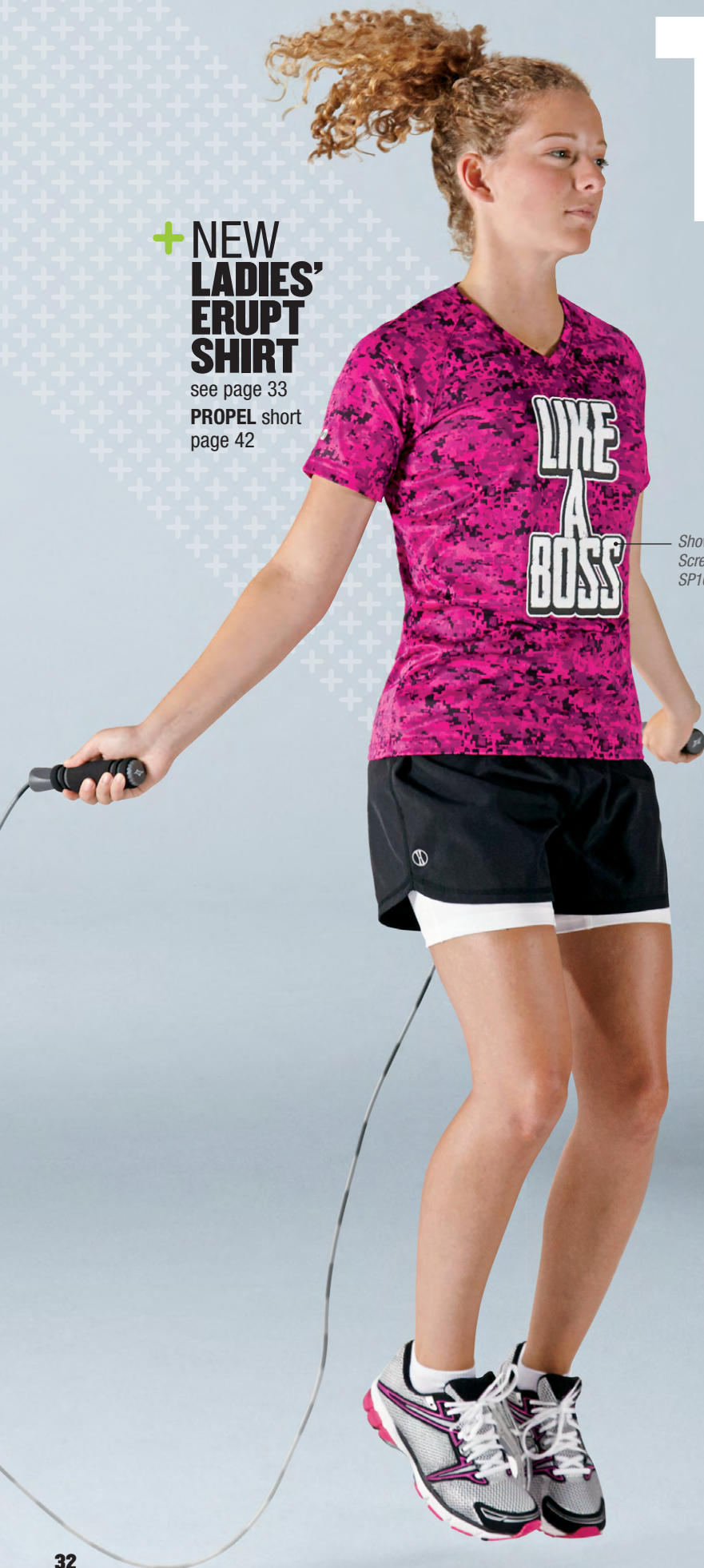
Accessories

Decoration

TOPS

**+ NEW
LADIES'
ERUPT
SHIRT**

see page 33
PROPEL short
page 42



Shown with
Screen Print
SP101

**+ NEW
ERUPT
SHIRT**

see page 33
HUSTLE short
page 42



Shown with
Screen Print
SP98

STOCK SUBLIMATION



Shown with
Screen Print
SP99

Decorated with two-color Screen
Print. Recommended garment retail
price with decoration, \$27.00

See decoration instructions page 71.

Adult 228100/
Youth 228200



Shown with
Screen Print
SP100

Ladies' 228300

NEW

ERUPT SHIRT/ADULT 228100
YOUTH 228200/LADIES' 228300

dry-
Excel™ **BIG** 4x

- 100% dry-Excel™ polyester
- Semi-fitted style
- Defined by bold All-Over Sublimation print
- Modern Camo design

228100 MSRP: \$21.00 ADULT S-4X

228200 MSRP: \$19.00 YOUTH S-L

228300 MSRP: \$21.00 LADIES' XS-2X



Bright Yellow/Black
U65



Graphite/Black
172



Orange/Black
321



Power Pink/Black
462
(Ladies' only)



Royal/Black
289



Scarlet/Black
406



True Navy/Black
F92



Vegas Gold/Black
252
(Adult/Youth only)



White/Black
226



Track
Baseball
Softball
Tops
Shorts
Fleece
Outerwear/
Warmups
Accessories
Decoration

+ HEATHERED MICRO-INTERLOCK

- Dry-Excel™ Heathered Micro-Interlock has a smooth polyester surface with high mechanical stretch and includes moisture wicking properties for performance conditions.

Track

Baseball

Softball



Built-in wicking technology

BALLISTIC SHIRT/ADULT 222402 YOUTH 222202/LADIES' 222302



- Heathered Micro-Interlock inserts
- Tagless labeling for added comfort

222402 MSRP: \$25.00 ADULT S-3X
222202 MSRP: \$23.00 YOUTH S-XL
222302 MSRP: \$25.00 LADIES' XS-2X

Adult 222402/
Youth 222202

Ladies' 222302

Tops

Short Sleeve



Athletic Heather/
Black Heather
U57



Athletic Heather/
Forest Heather
M91



Athletic Heather/
Lt Gold Heather
M92



Athletic Heather/
Maroon Heather
U66



Athletic Heather/
Navy Heather
U53



Athletic Heather/
Orange Heather
U79



Athletic Heather/
Purple Heather
M93



Athletic Heather/
Royal Heather
U54



Athletic Heather/
Scarlet Heather
U80



Athletic Heather/
White
152



THIS GARMENT IS PERFECT FOR
SUBLIMATION TEAM NAMES AND NUMBERS.

Shorts

ELECTRIFY SHIRT/ADULT 222472 YOUTH 222272/LADIES' 222372



- Semi-fitted style
- Tagless labeling for added comfort

222472 MSRP: \$16.50 ADULT S-3X
222272 MSRP: \$14.50 YOUTH S-L
222372 MSRP: \$16.50 LADIES' XS-2X



Built-in wicking technology

Adult 222472/
Youth 222272

Ladies' 222372

Fleece

Outerwear/
Warmups

Accessories

Decoration



Athletic
Heather 018



Black
Heather U36



Cardinal
Heather T04



Forest
Heather U41



Kelly
Heather U10



Lt Gold
Heather U63



Maroon
Heather T09



Navy
Heather U22



Orange
Heather U78



Purple
Heather U86



Royal
Heather U55



Scarlet
Heather T20

HEATHERED MICRO-INTERLOCK

FUSION POLO/ADULT 222418

dry-Excel **BIG** 4x

- Matching self-collar with contrast tipping
- Three-button placket
- Tagless labeling for added comfort

222418 MSRP: \$39.00 ADULT S-4X

FUSION SHIRT/LADIES' 222318

dry-Excel

- Heathered Micro-Interlock inserts
- Contoured V-neckline
- Tagless labeling for added comfort

222318 MSRP: \$30.00 LADIES' XS-2X

Coordinates with the Launch Shirt



Adult 222418



Ladies' 222318

Collarless shirt for a more feminine look and feel



LAUNCH SHIRT ADULT 222404/YOUTH 222204

dry-Excel

- Heathered Micro-Interlock inserts
- Tagless labeling for added comfort

222404 MSRP: \$25.00 ADULT S-3X

222204 MSRP: \$23.00 YOUTH S-XL



Track
Baseball
Softball
Tops
Shorts
Fleece
Outerwear/Warmups
Accessories
Decoration

+ ENGINEERED SOLID

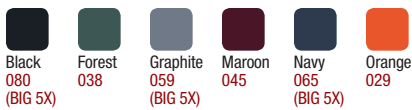
• Dry-Excel™ Solid has a textured polyester/spandex surface that wicks away moisture and provides an extended range of motion.

ADAPT POLO ADULT 222417/LADIES' 222317



- Three-button placket on Adult, V-neckline on Ladies'
- Fine gauge filament rib collar
- Tagless labeling for added comfort

222417 MSRP: \$37.00 ADULT S-3X, SELECT COLORS S-5X
222317 MSRP: \$37.00 LADIES' XS-2X



Adult 222417



Ladies' 222317

Track

Baseball

Softball

Tops

Short Sleeve

Shorts

Fleece

Outerwear/
Warmups

Accessories

Decoration

+ CLOSE-HOLE MICROMESH

• Dry-Excel™ Close-hole Micromesh has a textured polyester surface with high mechanical stretch and superior "molecular engineered" wicking technology that lasts for the life of the garment.

OPTIMAL POLO ADULT 222465/LADIES' 222365



- Dry-Excel™ Twill Interlock inserts have a smooth polyester surface
- Matching self-collars
- Three-button placket on Adult
- Two-button placket on Ladies'
- Tagless labeling for added comfort

222465 MSRP: \$38.00 ADULT S-3X
222365 MSRP: \$38.00 LADIES' XS-2X



Adult 222465



Ladies' 222365

Breathable micromesh inserts



Graphite/
Athletic Purple
U98

Graphite/
Black
172

Graphite/
Dk Green
U90

Graphite/
Maroon
U92

Graphite/
Navy
U93

Graphite/
Orange
U94

Graphite/
Royal
U96

Graphite/
Scarlet
171

Graphite/
White
R04



TWILL INTERLOCK

• Dry-Excel™ Twill Interlock has a smooth polyester surface with high mechanical stretch for extended range of motion that wicks away moisture.

EXPLOSION POLO ADULT 222416/LADIES' 222316

dry-Excel **BIG** 4x

- Contrasting dry-Excel™ pin-hole micromesh piping, trim and collar band
- Three-button placket on Adult, V-neckline on Ladies'
- Tagless labeling for added comfort

222416 MSRP: \$39.00 ADULT S-4X
222316 MSRP: \$39.00 LADIES' XS-2X



Adult 222416



Ladies' 222316



Black/
Lt Gold R16

Black/
Orange 423

Black/
Scarlet 500

Black/
White 420

Dk Green/
White 438

Graphite/
White R04



Maroon/
White 380

Navy/
Lt Gold S28

Navy/
Scarlet S20

Navy/
White 301

Athletic Purple/
White 750

Royal/
White 280

Scarlet/
White 408

MICRO-INTERLOCK

• Dry-Excel™ Micro-Interlock has a smooth polyester surface with high mechanical stretch and includes superior wicking technology and an odor-resistant treatment.

ZOOM SHIRT/ADULT 222449 YOUTH 222449/LADIES' 222349

dry-Excel **BIG** 4x

- Semi-fitted style
- Tagless labeling for added comfort
- V-neckline and raglan sleeves on Ladies'

222449 MSRP: \$11.50 ADULT S-3X,
SELECT COLORS S-4X
222449 MSRP: \$10.50 YOUTH S-L
222349 MSRP: \$11.50 LADIES' XS-2X



Adult 222449/
Youth 222449



Ladies' 222349



Black
080
(BIG 4X)

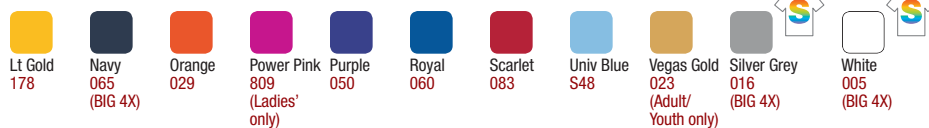
Cardinal
J36
(Adult/
Youth only)

Dk Maroon
T38

Forest
038

Graphite
059

Kelly
030
(Adult/
Youth only)



Lt Gold
178

Navy
065
(BIG 4X)

Orange
029

Power Pink
809
(Ladies'
only)

Purple
050

Royal
060

Scarlet
083

Univ Blue
S48

Vegas Gold
023
(Adult/
Youth only)

Silver Grey
016
(BIG 4X)

White
005
(BIG 4X)

NEW
LOWER
PRICE

Track
Baseball
Softball
Tops
Polo
Shorts
Fleece
Outerwear/
Warmups
Accessories
Decoration

MICRO-INTERLOCK

- Dry-Excel™ Micro-Interlock has a smooth polyester surface with high mechanical stretch and includes superior wicking technology and an odor-resistant treatment.

Shown with Sublimation design template SB24 on front. Recommended garment retail price with decoration, \$31.50



Adult 222459/
Youth 222259



Ladies' 222364

SPARK SHIRT/ADULT 222459 YOUTH 222259/LADIES' 222364



- Semi-fitted style
- Matching self-collar and cuffs
- Tagless labeling for added comfort

222459 MSRP: \$20.00 ADULT S-3X,
SELECT COLORS S-4X
222259 MSRP: \$18.00 YOUTH S-L
222364 MSRP: \$20.00 LADIES' XS-2X



CLINCHER SHIRT/ADULT 222475



- Contrast dry-Excel™ pin-hole micromesh accents at collar, cuffs and bottom hem
- Tagless labeling for added comfort

222475 MSRP: \$38.50 ADULT XS-3X



Black/Lt Gold R16 Black/Orange 423 Black/Scarlet 500 Black/Vegas Gold 255 Black/White 420



Cardinal/White 409 Dk Maroon/White T41 Forest/White 436 Navy/Lt Gold S28 Navy/White 301 Purple/White 450 Royal/Lt Gold S67 Royal/White 280 Scarlet/White 408 Silver Grey/White R40

Track

Baseball

Softball

Tops

Shorts

Fleece

Outerwear/
Warmups

Accessories

Decoration



+ SOF-TEC ULTRA™

• Sof-tec Ultra™ is a polyester/spandex with a sueded surface for unbelievable comfort and high mechanical stretch with moisture wicking properties for performance conditions.



Adult 222474

Breathable micromesh inserts



Ladies' 222374

High stretch, incredibly soft sueded surface

CONDITION TRAINING TOP ADULT 222474/LADIES' 222374



- Contrasting flatlock stitching reduces skin abrasion
- Tagless labeling for added comfort

222474 MSRP: \$46.00 ADULT XS-3X

222374 MSRP: \$46.00 LADIES' XS-2X



+ SOF-TEC™

• Dry-Excel™ Sof-tec™ has a lightly brushed polyester/spandex surface with high stretch for extended range of motion and wicking properties for performance conditions.



Vapor 222447

Shown with Sublimation design template SB27



Fuel 222448

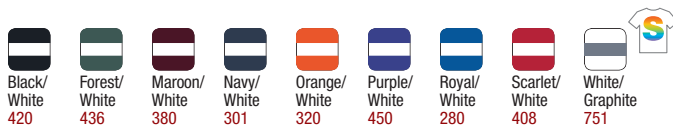
VAPOR SHIRT/ADULT 222447 FUEL SHIRT/ADULT 222448



- Contrasting flatlock stitching reduces skin abrasion
- Matching self-collar and cuffs on 222448
- Tagless labeling for added comfort

222447 MSRP: \$27.00 ADULT XS-3X

222448 MSRP: \$34.00 ADULT XS-3X



Track

Baseball

Softball

Tops

Shorts

Fleece

Outerwear/
Warmups

Accessories

Decoration

+ PERFORMANCE PIQUÉ

• Dry-Excel™ Performance Piqué has a textured polyester surface with high mechanical stretch for extended range of motion.



WRATH SHIRT/ADULT 222477

- Zip-neck styling with silicone detail
- Tagless labeling for added comfort

222477 MSRP: \$44.00 ADULT XS-3X



Athletic Purple/Black/White S84 Black/Lt Gold/White R21 Black/Orange/White 611 Black/Scarlet/White R20



Black/Vegas Gold/White 612 Dk Green/Black/White 520 Graphite/White/White U74 Maroon/Black/White 524 Navy/Lt Gold/White S30 Navy/Vegas Gold/White 312 Royal/Black/White 526 Royal/Lt Gold/White S70 Scarlet/Black/White 952 Univ Blue/Graphite/White U59

Track

Baseball

Softball

Tops

Shorts

Long Sleeve

+ TWILL INTERLOCK

• Dry-Excel™ Twill Interlock has a smooth polyester surface with high mechanical stretch for extended range of motion.



JUMPSHOT SHIRT/ADULT 222433

- Dry-Excel™ Close-hole Micromesh inserts
- Rib-trim neck and cuffs
- Tagless labeling for added comfort

222433 MSRP: \$38.50 ADULT XS-4X



Shown with Screen Print SP9. For a full list of our template designs, visit decoration.hollowayusa.com

Drop tail hem



Athletic Purple/White 750 Black/Orange 423 Black/Scarlet 500 Black/White 420 Dk Green/White 438 Graphite/White R04 Lt Gold/White 752 Maroon/White 380 Navy/White 301 Orange/White 320 Royal/White 280 Scarlet/White 408

Fleece

Outerwear/Warmups

Accessories

Decoration

SHORTS

+ MICRO-INTERLOCK

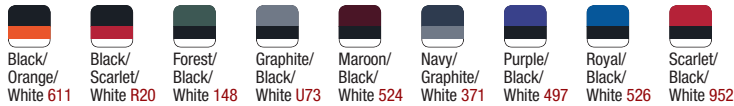
- Dry-Excel™ Micro-Interlock has a smooth polyester surface with high mechanical stretch and includes superior wicking technology and an odor-resistant treatment.

MOBILITY SHORT ADULT 229566/YOUTH 229266



- Dry-Excel™ pin-hole micromesh inserts
- Elasticized drawstring waist
- Inseams: Adult 10", Youth 9"

229566 MSRP: \$27.00 ADULT S-3X
229266 MSRP: \$25.00 YOUTH S-XL



Breathable micromesh inserts



SIMULATE SHORT ADULT 229557/YOUTH 229257



- Elasticized drawstring waist
- Tagless labeling for added comfort
- Inseams: Adult 9", Youth 8"

229557 MSRP: \$26.00 ADULT S-3X
229257 MSRP: \$24.00 YOUTH S-L



HUSTLE SHORT/ADULT 229555/YOUTH 229255



- Covered, elasticized drawstring waist
- Athletic fit
- Tagless labeling for added comfort
- Inseams: Adult 9", Youth 8"

229555 MSRP: \$15.00 ADULT S-3X
229255 MSRP: \$13.00 YOUTH S-L



New color True Navy added to match new uniform tops and meet SGMA standards. True Navy is a lighter shade than our existing Navy.



+ 4-WAY STRETCH

- Dry-Excel™ 4-Way Stretch has a smooth polyester/spandex surface with high stretch for extended range of motion and wicking technology with an odor-resistant treatment.

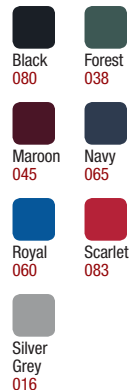
POWER SHORT ADULT 229551



- Flatlock stitching reduces skin abrasion
- Covered, elasticized drawstring waist
- Coaches' fit
- Tagless labeling for added comfort
- 9" inseam

229551 MSRP: \$26.00 ADULT S-3X

Breathable micromesh insert at inseam



+ PERFORM WOVEN

• Dry-Excel™ lightweight micro-denier woven polyester fabric has a smooth polyester surface with built-in moisture wicking properties for performance conditions.

PROPEL SHORT LADIES' 229319/GIRLS' 229419



- Built-in, contrast color, poly/spandex 4-Way Stretch inner short with wicking properties
- Tagless labeling for added comfort
- Inseams of compression short: Ladies' 5.5", Girls' 5"
- Inseams of outer short: Ladies' 4", Girls' 3.5"

229319 MSRP: \$25.00 LADIES' S-2X
229419 MSRP: \$23.00 GIRLS' S-XL



4-Way Stretch compression short with flatlock stitching to reduce skin abrasion

Track

Baseball

Softball



Black/White 420

Bright Yellow/Black U65

Forest/White 436

Graphite/Black 172

Maroon/White 380

Navy/White 301

Orange/Black 321

Power Pink/Black 462

Purple/White 450

Royal/White 280

Scarlet/White 408

Tops

ENERGIZE SHORT/LADIES' 229325/GIRLS' 229425



- Elasticized drawstring waist
- Concealed key pocket
- Inseams: Ladies' 4", Girls' 3.5"

229325 MSRP: \$20.00 LADIES' S-2X
229425 MSRP: \$18.00 GIRLS' S-XL



Micromesh inserts for breathability

Built-in wicking brief

Shorts



Black/Lt Gold/White R21

Black/Orange/White 611

Black/Scarlet/White R20

Black/Vegas Gold/White 612

Black/White/Black 419

Dk Maroon/Black/White 524

Fleece



Forest/Black/White 148

Graphite/Black/White U73

Navy/Lt Gold/White S30

Navy/Vegas Gold/White 312

Navy/White/White 122

Orange/Black/White 322

Power Pink/Black/White 456

Purple/Black/White 497

Royal/Lt Gold/White S70

Royal/Black/White 526

Scarlet/Black/White 952

Outerwear/Warmups

Accessories

Decoration

+ MICRO-INTERLOCK

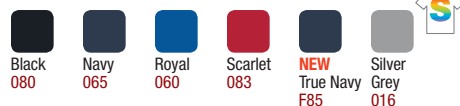
• Dry-Excel™ Micro-Interlock has a smooth polyester surface with high mechanical stretch that includes superior wicking technology and an odor-resistant treatment.

HUSTLE SHORT/LADIES' 229355



- Covered, elasticized drawstring waist
- 5" inseam

229355 MSRP: \$15.00 LADIES' XS-2X



New color True Navy added to match new uniform tops and meet SGMA standards. True Navy is a lighter shade than our existing Navy.



Flatlock stitching on waistband



FLEECE

+ BLENDED FLEECE

- Our 60% cotton/40% polyester sweatshirt fleece is 9 oz. in weight and has an extremely soft hand.

WIPEOUT HOODIE/ADULT 222489

- Fully lined hood with jersey
- No drawstring or eyelet on hood for size XXS and XS
- Front pouch pocket
- Coordinating pant: Adult 222809

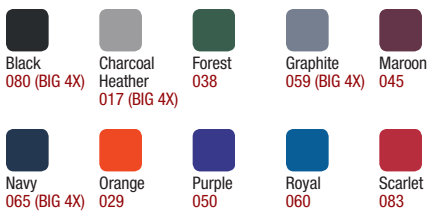
222489 MSRP: \$39.00 ADULT XXS-3X



FUSE HOODIE/ADULT 222808/YOUTH 222828 **BIG** 4x

- Fully lined hood with jersey
- Front pouch pocket
- No drawstring on Youth
- Coordinating pants: Adult 222809, Youth 222829

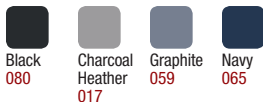
222808 MSRP: \$36.00 ADULT S-3X, SELECT COLORS S-4X
222828 MSRP: \$32.00 YOUTH S-XL



UNIFY PANT/ADULT 222809/YOUTH 222829

- Chunky drawstring with elastic waistband
- Side pockets

222809 MSRP: \$32.00 ADULT S-3X
222829 MSRP: \$28.00 YOUTH S-XL



Open bottom hems

+ PERFORMANCE WIK-SOF™

Grey Print Collection

- Wik-Sof™ dry-Excel™ Performance Fleece has a smooth polyester surface and dries fast to provide superior comfort and warmth.

Track

Baseball

Softball

Tops

Shorts

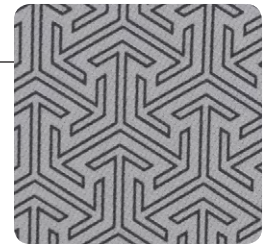
Fleece

Performance

Outerwear/
Warmups

Accessories

Decoration



Grey print arrow detail

See this print up close. Check out our product videos at hollowayusa.com.

Shown with Reverse Laser Appliqué RLB9. Visit decoration.hollowayusa.com for full library of designs

Micromesh hood lining

Front pouch pocket

BOOM HOODIE/ADULT 222800



- All-over grey print fabric with contrasting dry-Excel™ pin-hole micromesh trim
- Matching self-cuffs and bottom hem
- Front pouch pocket
- Coordinating pant: Adult 222481, Ladies' 222379

222800 MSRP: \$45.50 ADULT XS-3X



CHAOS HOODIE/ADULT 222480

dry-Excel

- Drawstring hood
- Matching self-cuffs and bottom hem
- Front pouch pocket
- No drawstring or eyelet on hood for XXS and XS
- Coordinating pant: Adult 222481, Ladies' 222379

222480 MSRP: \$42.50 ADULT XXS-3X



 **WHITE GARMENTS ARE PERFECT FOR OUR NEW SUBLIMATION DECORATION TECHNIQUE.**

Micromesh hood lining

Media pocket



Micromesh hood lining

Media pocket

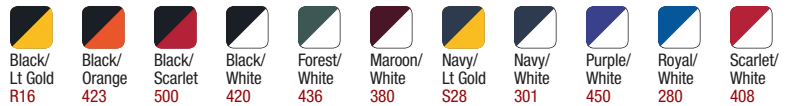


HYPE HOODIE/ADULT 222484

dry-Excel

- Matching self-cuffs and bottom hem
- Front pouch pocket
- Coordinating pant: Adult 222481, Ladies' 222379

222484 MSRP: \$42.50 ADULT XXS-3X



Side pockets

Open bottom hems



FRENZY PANT/ADULT 222481

dry-Excel

- Elasticized drawstring waist
- Open bottom hems with zippers

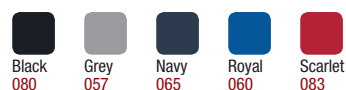
222481 MSRP: \$36.00 ADULT XS-3X

CONTOUR PANT/LADIES' 222379

dry-Excel

- Ladies' trend forward fit with low-rise and straight leg
- Elasticized drawstring waist

222379 MSRP: \$36.00 LADIES' XS-2X



Adult 222481

Ladies' 222379

Track

Baseball

Softball

Tops

Shorts

Performance

Fleece

Outerwear/
Warmups

Accessories

Decoration

OUTERWEAR + WARMUPS

TECHNOLOGY THAT PERFORMS... UNDER ANY CONDITION

In the zone. That's where Holloway's fabric technology gets you. Because our technology is driven by specific customer needs and benefits. Identify the season, weather conditions and preferences, then select from Holloway's extensive line of Warmup and Outerwear fabrics. It's how you get in the zone with athletes, coaches and fans.

Waterproof

For impenetrable weather protection, Holloway's waterproof fabrics fit the need.

Waterproof fabrics:

- Storm-Flex™
- Storm-Bloc™

Pages 54–55



• Storm-Bloc™ Circulate Jacket page 54

Weather-Resistant

Our Weather-Resistant category includes a selection of woven fabrics offering superior weather protection and durability.

Weather-Resistant fabrics:

- Micron™
- Micro-Cord™
- Duraweav™

Pages 56–61



• Micron™ Collision Jacket and Sable Pant page 59

Knits

Comfort is the ultimate goal for those who choose Holloway knits. These winning selections feature soft, comfortable, stretch fabrics.

Knit fabrics:

- Flex-Sof™
- Wik-Sof™
- EV-tec™
- Tricotex™

Pages 62–63

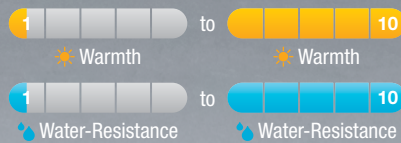


• Flex-Sof™ Dedication Jacket page 62 and Traction Pant page 63

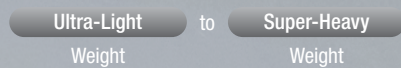


WONDERING WHICH JACKET OR WARMUP IS RIGHT FOR YOU?

We've developed scales to rate all Holloway Outerwear and Warmups for the degree of warmth and water-resistance they provide: 1 being the lowest degree of water-resistance and warmth, and 10 being our warmest/most water-resistant.



To determine desired weight of your jacket, look for weight ratings ranging from Ultra-Light to Super-Heavy.



Outerwear and Warmups are rated for warmth and water-resistance using our new scale. It is intended for comparison among Holloway garments only.

Dual Purpose

When the goal is weather protection with maximum comfort and “zero noise,” the strategy calls for Holloway’s Dual Purpose category. It combines the best aspects of woven and knits.

Dual Purpose fabrics:

- Aero-Tec™
- Swif-Tec™
- Stealth-Tec™
- 3L™ Soft Shell

Pages 48–54

+ DUAL PURPOSE AERO-TEC™

Grey Print Collection
(colorway G49)

- Aero-Tec™ is the newest revolution in our Dual Purpose warm up category.
- This ultra-lightweight, durable and breathable fabric provides both weather protection and “zero noise.”

Track

Baseball

Softball

Tops

Shorts

Fleece

Outerwear/
Warmups

Accessories

Decoration



Adult 229133



Ladies' 229333



Drop tail hem

Micromesh hood lining

360-degree reflective trim

Coordinating Pants



Adult 229134
page 50

Ladies' 229334
page 50



Packable into left pocket



Black/Black
425

Black/Orange
423

Black/Scarlet
500

Black/White
420



Forest/White
436

Grey Print/White
G49

Maroon/White
380

Navy/Navy
S14



Navy/White
301

Purple/White
450

Royal/White
280

Scarlet/White
408

STRATO JACKET ADULT 229133/LADIES' 229333

- Adjustable lightweight hood with reflective eyelets and concealed cord locks
- Encased, concealed drawstring with right pocket access
- Lightweight elastic contoured cuffs
- Partial storm flap for comfortable chin and neck protection

229133 MSRP: \$59.00 ADULT S-3X
229333 MSRP: \$59.00 LADIES' S-2X

2

☀️ Warmth

5

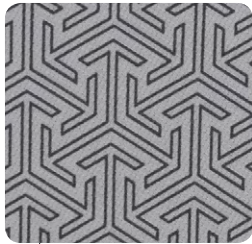
💧 Water-Resistance

Ultra-Light

Weight

Grey Print Collection

AERO-TEC™



Grey print arrow detail



Adult 229138

Front zippered pockets



Ladies' 229338



Drop tail hem

Micromesh hood lining

Reflective accents

Micromesh hood lining

Reflective accents

Media pocket

CROSSOVER JACKET ADULT 229138/LADIES' 229338



- Hybrid design, wind/water-resistant Aero-Tec™ upper body
- Warmth with the dry-Excel™ Wik-Sof™ lower body
- Encased, concealed drawstring with right pocket access
- Adjustable lightweight hood with reflective eyelets and concealed cord locks
- Contoured cuffs
- Partial storm flap for comfortable chin and neck protection
- Dual inside pockets

229138 MSRP: \$60.00 ADULT S-3X
229338 MSRP: \$60.00 LADIES' S-2X



Warmth



Water-Resistance



Light

Weight



Grey Print/Black G40

Grey Print/Forest G41

Grey Print/Grey G38

Grey Print/Maroon G43

Grey Print/Navy G44

Grey Print/Purple G46

Grey Print/Royal G47

Grey Print/Scarlet G48

Coordinating Pants



Adult 229134 page 50

Ladies' 229334 page 50

Track
Baseball
Softball
Tops
Shorts
Fleece
Dual Purpose
Outerwear/Warmups
Accessories
Decoration

Track



Baseball



Softball



Tops

Shorts



Fleece



Accessories



Decoration



Adult 229134



Ladies' 229334

EXO PANT ADULT 229134/LADIES' 229334

- Elasticized drawstring waist
- Easy-entry side pockets
- Mesh and nylon lining
- Ladies' trend forward fit on 229334 with low rise and straight leg

229134 MSRP: \$48.00 ADULT XS-3X
229334 MSRP: \$48.00 LADIES' XS-2X



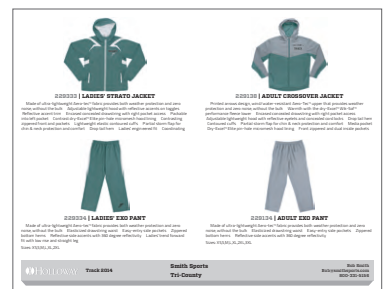
Warmth



Water-Resistance



Ultra-Light
Weight



Use our Custom Flyer Designer to sell coordinated Warmup sets to the team.
hollowayusa.com



Same Day
Shipment

+ DUAL PURPOSE SWIF-TEC™

- Swif-Tec™ double-weave technology features a lightweight, grid-textured polyester surface and insulated backside for warmth, enabling athletes to acclimate easily to varying climates.
- A Dual Purpose warmup fabric that provides wind/water-resistant protection with minimal noise.



Swif-Tec™ body



Stealth-Tec™ blocking on top

Side pockets

RECRUIT PULLOVER/ADULT 229029



- Dry-Excel™ pin-hole micromesh inserts along heat zones for ventilation
- Lightweight, spandex-trimmed cuffs
- Pin-hole micromesh lining in pockets
- Encased shockcord at bottom hem
- Coordinating pants: Adult 229123, Youth 229223, Ladies' 229323

229029 MSRP: \$50.00 ADULT XS-4X



COMMENCE PULLOVER/ADULT 229122/YOUTH 229222

- Adjustable hood and encased shockcord at bottom hem on Adult
- Youth style features partial elasticized hood and non-adjustable hem
- Coordinating pants: Adult 229123, Youth 229223, Ladies' 229323

229122 MSRP: \$55.00 ADULT S-3X
229222 MSRP: \$51.00 YOUTH S-XL



Micromesh hood lining

Lightweight shell with insulated backing

Zippered front pouch pocket



Track

Baseball

Softball

Tops

Shorts

Fleece

Dual Purpose

Outerwear/
Warmups

Accessories

Decoration

SWIF-TEC™



Drop tail hem



Ladies' 229320

Adult 229120/
Youth 229220

Front Zippered pockets

INVIGORATE JACKET/ADULT 229120/YOUTH 229220/LADIES' 229320

- Dual inside pockets
- Encased shockcord at bottom, drop tail hem on Adult and Ladies'
- Youth style features non-adjustable drop tail hem
- Coordinating pants: Adult 229123, Youth 229223, Ladies' 229323

229120 MSRP: \$52.00 ADULT XS-3X

229220 MSRP: \$48.00 YOUTH S-L

229320 MSRP: \$52.00 LADIES' XS-2X



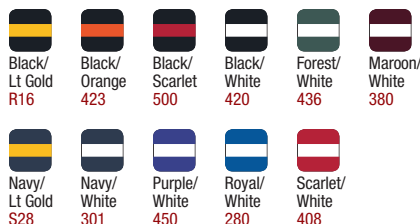
ACCELERATE PANT/ADULT 229123 YOUTH 229223/LADIES' 229323

- Elasticized drawstring waist
- Ladies' trend forward fit on 229323 with low rise and straight leg

229123 MSRP: \$43.00 ADULT XS-3X

229223 MSRP: \$39.00 YOUTH S-XL

229323 MSRP: \$43.00 LADIES' XS-2X



Adult 229123/
Youth 229223



Ladies' 229323



+ DUAL PURPOSE STEALTH-TEC™

- Stealth-Tec™ is the original Dual Purpose fabric that feels like a knit but performs like a woven.
- Medium weight polyester fabric has a soft, textured diamond surface and sheds rain while protecting from the elements. Wind/water-resistant protection with “zero noise.”



Black/Lt Gold R16 Black/Orange 423 Black/Scarlet 500



Black/White 420 Forest/White 436 Maroon/White 380 Navy/Lt Gold S28



Navy/White 301 Purple/White 450 Royal/White 280 Scarlet/White 408



Adult 229109



Zippered front pockets

Extended sleeve length on Ladies'



Ladies' 229309

ILLUSION JACKET/ADULT 229109/LADIES' 229309

- Elasticized cuffs on Adult 229109
- Dual inside pockets
- Laydown collar and contoured cuffs on Ladies' 229309
- Adjustable shockcord with open bottom hem
- No shockcord on Ladies' size XS
- Coordinating pants: Adult 229110, 229118, Tall 229610, Ladies' 229310, Ladies' Tall 229710

229109 MSRP: \$58.00 ADULT S-3X

229309 MSRP: \$58.00 LADIES' XS-2X



TRANCE PANT/ADULT 229110/TALL 229610 LADIES' 229310/LADIES' TALL 229710

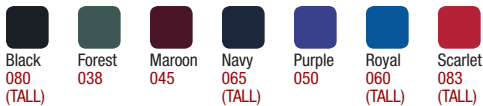
- Elasticized drawstring waist
- Open bottom hems with zippers
- Ladies' trend forward fit on 229310 and 229710 with low rise waist and straight leg

229110 MSRP: \$49.00 ADULT XS-3X

229610 MSRP: \$56.00 TALL LT-3XT

229310 MSRP: \$49.00 LADIES' XS-2X

229710 MSRP: \$56.00 LADIES' TALL MT-2XT



TALL 3x



Adult 229110/
Tall 229610

Side pockets



Ladies' 229310/
Ladies' Tall 229710

Side pockets

Track

Baseball

Softball

Tops

Shorts

Fleece

Dual Purpose
Outerwear/
Warmups

Accessories

Decoration

STEALTH-TEC™

STABILITY JACKET/ADULT 229158

- Insulated with anti-pill microfleece and quilted nylon lining for added warmth
- 4-Way Stretch technology on the inner storm collar, cuffs and hem for added warmth and dryness

229158 MSRP: \$80.00 ADULT XS-3X



Black/ Lt Gold R16	Black/ Orange 423	Black/ Scarlet 500	Black/ White 420	Forest/ White 436	Maroon/ White 380
Navy/ Lt Gold S28	Navy/ White 301	Purple/ White 450	Royal/ White 280	Scarlet/ White 408	

SHOCK JACKET/ADULT 229116

- Raglan sleeves for maximum mobility
- Elasticized cuffs
- Coordinating pants: Adult 229110, 229118, Ladies' 229310

229116 MSRP: \$58.00 ADULT S-3X



Black/ Orange 423	Black/ Scarlet 500	Black/ White 420	Forest/ White 436	Maroon/ White 380	Navy/ White 301	Royal/ White 280	Scarlet/ White 408
-------------------------	--------------------------	------------------------	-------------------------	-------------------------	-----------------------	------------------------	--------------------------

4-Way Stretch protection inner collar, cuffs and hem for added warmth and dryness

Substantial insulated jacket

Front zippered pockets

Zippered pockets

Complete waterproof protection in a lightweight, breathable shell

Left chest flap for easy decoration

Waterproof zippers/ taped seams

+ WATERPROOF STORM-BLOC™

- Lightweight textured Storm-Bloc™ fabric features our bonded technology—10,000 mm windproof/waterproof surface x 10,000 mm breathable back—for extreme weather protection.



Drop tail hem



Hood rolls into collar

CIRCULATE JACKET/ADULT 229159

- Adjustable hood and encased shockcord at bottom
- Front zippered pockets
- Coordinating pant: Adult 229026 (possible color variation due to different fabric)

229159 MSRP: \$90.00 ADULT S-3X



Black/ White 420	Forest/ White 436	Graphite/ White R04	Maroon/ White 380	Navy/ White 301	Royal/ White 280	Scarlet/ White 408
------------------------	-------------------------	---------------------------	-------------------------	-----------------------	------------------------	--------------------------

Track

Baseball

Softball

Tops

Shorts

Fleece

Outerwear/
Warmups

Accessories

Decoration

+ WATERPROOF STORM-FLEX™

- Innovative Storm-Flex™ is a lightweight, 4-Way Stretch high-gauge polyester.
- The breathable stretch membrane has a no-cling, dry-to-the-touch backing providing a truly waterproof, ultra-breathable garment that allows athletes to be active, comfortable and dry in any condition.
- Ultimate protection without the weight or bulk.



Concealed hood



Black/Graphite
R17



Graphite/Black
172



Navy/Graphite
S21

CONVECTIVE JACKET/ADULT 229025

- Super soft feel with significant stretch
- Waterproof front zippered pockets and dual inside pockets
- Fully taped seams and waterproof 2-way zipper
- Reflective accents on front and back shoulders
- Inside storm flap for comfortable chin and neck protection

229025 MSRP: \$110.00 ADULT S-3X



COMPOSITE PANT/ADULT 229026

- Back, flap covered pocket with zipper
- Fully taped seams
- Zippered bottom hems with additional Velcro® closure and partial elastic for secure fit

229026 MSRP: \$80.00 ADULT XS-3X



Track
Baseball
Softball
Tops
Shorts
Fleece
Outerwear/
Warmups
Waterproof
Accessories
Decoration

+ WEATHER-RESISTANT MICRON™

• Micron™ polyester is a lightweight, wind/water-resistant fabric.

DESTROYER PULLOVER/ADULT 229108/YOUTH 229208

- Heather Grey jersey and nylon lining
- Raglan sleeves for maximum mobility
- Elasticized cuffs
- Shockcord on Adult with adjustable open bottom
- Youth style features non-adjustable hem
- Coordinating pants: Adult 229095, Youth 229295

229108 MSRP: \$46.00 ADULT S-3X
229208 MSRP: \$42.00 YOUTH S-XL

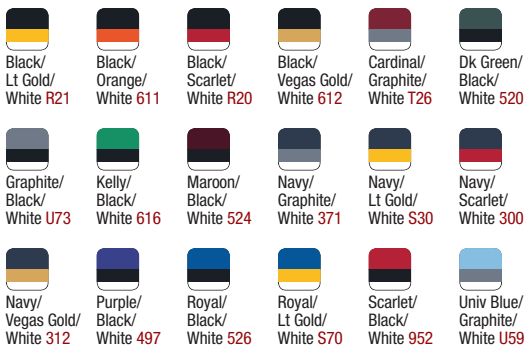


ACCLAIM PULLOVER/ADULT 229107/YOUTH 229207

dry-Excel BIG 4x

- Side zipper for easy on and off
- Easy-entry front pockets
- Flat front hem design with elasticized back and cuffs
- Coordinating pants: Adult 229095, Youth 229295

229107 MSRP: \$45.00 ADULT XS-4X
229207 MSRP: \$41.00 YOUTH S-L



Track

Baseball

Softball

Tops

Shorts

Fleece

Weather-Resistant
Outerwear/
Warmups

Accessories

Decoration



VICTORY PULLOVER/ADULT 229097/YOUTH 229297

- Raglan sleeves for maximum mobility
- Elasticized cuffs
- Easy-entry front pockets
- Shockcord on Adult with adjustable open bottom with drop tail hem
- Youth style features non-adjustable hem
- Coordinating pants: Adult 229095, Youth 229295

229097 MSRP: \$44.00 ADULT S-3X
229297 MSRP: \$40.00 YOUTH S-L

5 Warmth
6 Water-Resistance
Light Weight



Drop tail hem



Side zipper



Extended drop tail hem

CONVERSION PULLOVER/ADULT 229112

dry-Excel
Inner Sleeve

- Large front storage compartment
- Spandex-bound adjustable cuffs
- Shockcord with adjustable open bottom and drop tail hem
- Coordinating pant: Adult 229095, Youth 229295

229112 MSRP: \$67.00 ADULT S-3X

3 Warmth
6 Water-Resistance
Light Weight



High mechanical stretch Performance Piqué inner sleeves

Wind/water-resistant shell



Zip-off removable sleeves

Track
Baseball
Softball
Tops
Shorts
Fleece
Outerwear/Warmups
Weather-Resistant
Accessories
Decoration

Track

Baseball

Softball

Tops

Shorts

Fleece

Outerwear/
Warmups

Weather-Resistant

Accessories

Decoration

ADRENALINE JACKET/ADULT 229094/YOUTH 229294

- Raglan sleeves for maximum mobility
- Elasticized cuffs
- Shockcord on Adult with adjustable open bottom hem
- Youth style features non-adjustable hem
- Tagless labeling for added comfort
- Coordinating pants: Adult 229095, Youth 229295

229094 MSRP: \$45.00 ADULT S-3X
229294 MSRP: \$41.00 YOUTH S-L



Jersey lining



Front zippered pockets

Open bottom



HOMEFIELD JACKET/ADULT 229111/YOUTH 229211

- Three-piece hood for natural fit
- Raglan sleeves for maximum mobility
- Partial elasticized cuffs and bottom hem
- Coordinating pants: Adult 229095, Youth 229295

229111 MSRP: \$53.50 ADULT S-3X
229211 MSRP: \$49.00 YOUTH S-XL



Comfortable, heathered sweatshirt lining



Front zippered pockets



COLLISION JACKET/ADULT 229076/YOUTH 229276

- Front zippered pockets
- Adjustable hood and open bottom hem with encased shockcord
- Youth style features partial elasticized hood and non-adjustable hem
- Coordinating pants: Adult 229095, Youth 229295

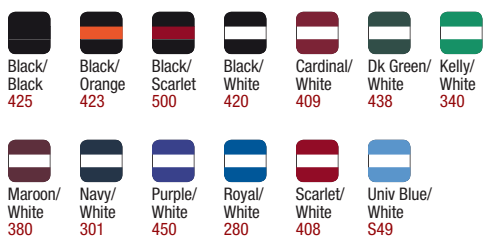
229076 MSRP: \$48.00 ADULT S-3X
229276 MSRP: \$44.00 YOUTH S-XL



SABLE PANT/ADULT 229095/YOUTH 229295

- Micromesh and nylon lining wicks away moisture for dry warmth inside
- Elasticized drawstring waist
- Easy-entry front and back zippered pockets
- Adjustable open bottom hems with zippers and snaps

229095 MSRP: \$39.00 ADULT XS-3X
229295 MSRP: \$35.00 YOUTH S-XL



Track

Baseball

Softball

Tops

Shorts

Fleece

Outerwear/
Warmups/
Weather-Resistant

Accessories

Decoration

+ WEATHER-RESISTANT MICRO-CORD™

- Micro-Cord™ is 100% polyester woven fabric with a unique raised, ribbed texture.
- The medium weight provides a durable weather barrier for wind/water-resistant protection that keeps athletes warm and dry.

CHARGER JACKET/ADULT 229059/YOUTH 229259 **BIG** 4x

- Quilted nylon sleeve lining for easy on and off
- Longer length for added warmth
- Youth style features elasticized hood and partial elastic at sides of bottom hem
- Coordinating pants: Adult 229056, Youth 229256

229059 MSRP: \$65.00 ADULT S-4X
229259 MSRP: \$61.00 YOUTH S-XL



Omni-Sof™ microfleece lining for added wind-resistance

Durable, wind/water-resistant medium weight shell

Contrasting zippered pockets

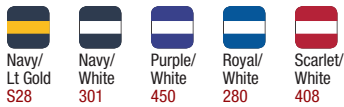
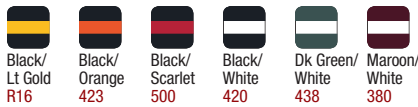
Adjustable cuffs



AGGRESSION JACKET/ADULT 229062/YOUTH 229262

- Athletic mesh and nylon lining
- Front zippered pockets
- Back vent with adjustable closures for full decoration access
- Adjustable hood with encased drawstring hem on Adult
- Youth style features partial elasticized hood and non-adjustable hem
- Coordinating pants: Adult 229056, Youth 229256

229062 MSRP: \$60.00 ADULT S-3X
229262 MSRP: \$56.00 YOUTH S-XL



Gusseted back for range of motion



4" Drop tail hem



Hood rolls into collar



PACER PANT/ADULT 229056 YOUTH 229256

- Mesh and nylon lining
- Easy-entry front and back zippered pockets

229056 MSRP: \$42.00 ADULT S-3X
229256 MSRP: \$38.00 YOUTH S-XL



Open bottom hems

+ WEATHER-RESISTANT DURAWEAV™

- Duraweav™ fabric has a smooth surface and medium weight to provide a durable weather barrier.
- Wind/water-resistant protection keeps athletes warm and dry.



Snap front

HERITAGE JACKET/ADULT 229140

BIG 5x

- Quilted nylon lining
- Rib-trim collar, cuffs and bottom hem
- Easy-entry front pockets
- Inside valuables pocket

229140 MSRP: \$55.00 ADULT S-3X, SOLID BLACK AND NAVY S-5X



- Black/Lt Gold/White R21
- Black/Orange/White 611
- Black/Scarlet/White R20
- Black/White 420
- Dk Green/Lt Gold/White S06
- Maroon/White 380
- Navy/Lt Gold/White S30
- Navy/Scarlet/White 300
- Navy/White 301
- Royal/Lt Gold/White S70
- Royal/Scarlet/White 282
- Royal/White 280
- Scarlet/Black/White 952
- Scarlet/White 408
- Black 080 (BIG 5X)
- Navy 065 (BIG 5X)

OLYMPIAN PULLOVER/ADULT 229149

- Brushed cotton lining
- Rib-trim cuffs and bottom hem
- Three-piece hood for natural fit

229149 MSRP: \$53.00 ADULT S-3X



- Black/White 420
- Black/Scarlet/White R20
- Black 080
- Royal/White 280
- Navy/White 301
- Dk Green/White 438
- Scarlet/White 408



Front pouch pocket

Side zipper

DEFENDER PANT/ADULT 229150

- Brushed cotton lining
- Easy-entry side and back zippered pockets

229150 MSRP: \$40.00 ADULT XS-3X



- Black 080
- Navy 065
- Royal 060
- Dk Green 035
- Scarlet 083



Elasticized bottom hems

Track

Baseball

Softball

Tops

Shorts

Fleece

Outerwear/
Warmups/
Weather-Resistant

Accessories

Decoration

+KNITS

FLEX-SOF™

- Flex-Sof™ creates a smooth, lightweight, polyester knit surface with superior abrasion-resistance.
- High mechanical stretch provides extended range of motion while moisture wicking technology is included for performance conditions.



Adult 229131/Youth 229231



Ladies' 229331

Breathable micromesh inserts

Track

Baseball

Softball

Tops

Shorts

Fleece

Outerwear/
Warmups

Knits

Accessories

Decoration

DEDICATION JACKET



ADULT 229131/YOUTH 229231/LADIES' 229331

- Front zippered pockets and dual inside pockets
- Encased shockcord at bottom, drop tail hem
- Youth style has non-adjustable hem
- Partial 4-Way Stretch cuff
- Ladies' engineered fit on 229331
- Coordinating pants: Adult 229132 and 229036, Youth 229232 and 229236, Ladies' 229332 and 229336



Black/Lt Gold/White R21

Black/Orange/White 611

Black/Scarlet/White R20

Black/Vegas Gold/White 612

Forest/Black/White 148

Maroon/Black/White 524



Navy/Lt Gold/White S30

Navy/Scarlet/White 300

Navy/Vegas Gold/White 312

Purple/Black/White 497

Royal/Black/White 526

Scarlet/Black/White 952

229131 MSRP: \$51.00 ADULT XS-3X

229231 MSRP: \$47.00 YOUTH S-L

229331 MSRP: \$51.00 LADIES' XS-2X

TRANSFORM PULLOVER



ADULT 229037/YOUTH 229237/LADIES' 229337

- Dry-Excel™ pin-hole micromesh blocking placed along heat zones for ventilation
- 1/4 zip neckline
- Drop tail hem
- Coordinating pants: Adult 229132 and 229036, Youth 229232 and 229236



Adult 229037/Youth 229237



Ladies' 229337

Micromesh blocking for ventilation



Black/Lt Gold/White R21

Black/Orange/White 611

Black/Scarlet/White R20

Black/Vegas Gold/White 612

Forest/Black/White 148

Maroon/Black/White 524

Navy/Lt Gold/White S30

Navy/Scarlet/White 300

Navy/Vegas Gold/White 312

Purple/Black/White 497

Royal/Black/White 526

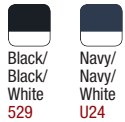
Scarlet/Black/White 952

**TRACTION PANT/ADULT 229132
YOUTH 229232/LADIES' 229332**



- Dry-Excel™ pin-hole micromesh blocking placed along heat zones for ventilation
- Elasticized drawstring waist
- Easy-entry side pockets

229132 MSRP: \$40.00 ADULT XS-3X
229232 MSRP: \$37.00 YOUTH S-XL
229332 MSRP: \$40.00 LADIES' XS-2X



TAPERED LEG



Adult 229132/
Youth 229232



Micromesh ventilation
(back of knees and gusset)

Ladies'
229332

Zippered hems



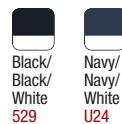
Micromesh blocking for ventilation

**VIGOR PANT/ADULT 229036
YOUTH 229236/LADIES' 229336**



- Dry-Excel™ pin-hole micromesh blocking placed along heat zones for ventilation
- Elasticized drawstring waist
- Easy-entry side pockets

229036 MSRP: \$40.00 ADULT S-3X
229236 MSRP: \$37.00 YOUTH S-XL
229336 MSRP: \$40.00 LADIES' XS-2X



STRAIGHT LEG

Adult 229036/
Youth 229236

Ladies'
229336

Zippered hems

Track

Baseball

Softball

Tops

Shorts

Fleece

Outerwear/
Warmups/
Knits

Accessories

Decoration



Same Day
Shipment

ACCESSORIES

Track

Baseball

Softball

Tops

Shorts

Fleece

Outerwear/
Warmups

Accessories
Bags

Decoration

Medium
229403



Water-resistant

22.5"

Great for Digital
Precision Printing

Water-resistant

Large
229404



Front zip-off pocket for easy
decoration access



29.5"

Great for Digital
Precision Printing

Padded shoulder
strap and handle

REGULATION BAG/MEDIUM 229403/LARGE 229404

- Shiny dobby textured fabric, 100% polyester
- Large main compartment with two-way zipper
- Front zip-off decoration/pocket flap with darts for extra storage space
- Ventilated end compartment with eyelets, sized for holding shoes or wet storage
- Zippered end pocket for securing valuables
- Inside pocket for stowing small items
- Adjustable/detachable shoulder strap
- Comfortable padded handle
- Removable hard bottom
- Medium Size: 22.5" x 11" x 12"
- Large Size: 29.5" x 12" x 13"

229403 MSRP: \$39.50
229404 MSRP: \$49.50



Black/Lt Gold/Graphite
G12



Black/Orange/Graphite
G11



Black/Scarlet/Graphite
W17



Black/White/Graphite
355



Forest/White/Graphite
G13



Maroon/White/Graphite
392



Navy/Lt Gold/Graphite
G19



Navy/White/Graphite
372



Power Pink/White/Graphite
G20



Purple/White/Graphite
696



Royal/White/Graphite
191



Scarlet/White/Graphite
G14

**LEAGUE BAG/229411
TOURNAMENT BAG/229412**

- Heavyweight oxford nylon, water-resistant
- Large main compartment with two-way zipper
- Bellowed front zippered pocket
- Adjustable/detachable padded shoulder strap
- Comfortable padded handle
- Removable hard bottom
- Tournament Bag features zippered end compartments sized for holding shoes or wet storage
- League Bag Size: 21" x 11" x 12"
- Tournament Bag Size: 28" x 13" x 14"

**229411 MSRP: \$32.00
229412 MSRP: \$40.00**



League
229411

21"



Tournament
229412

Shoe compartment

28"

Available colors for 229411 and 229412



Scarlet/Black/White
952



Royal/Black/White
526



Maroon/Black/White
524



Navy/Black/White
311



Orange/Black/White
322



Purple/Black/White
497



Black/Black/White
529



Dk Green/Black/White
520



Black/Cardinal/White
R34



Black/Kelly/White
R35



Black/Lt Gold/White
R21



Black/Univ Blue/White
R36



Black/Vegas Gold/White
612



Navy/Lt Gold/White
S30



Navy/Scarlet/White
300



Navy/Vegas Gold/White
312



Royal/Lt Gold/White
S70



Scarlet/Grey/White
T30

Track

Baseball

Softball

Tops

Shorts

Fleece

Outerwear/
Warmups

Accessories
Bags

Decoration

SPORTSMAN BACKPACK/229413

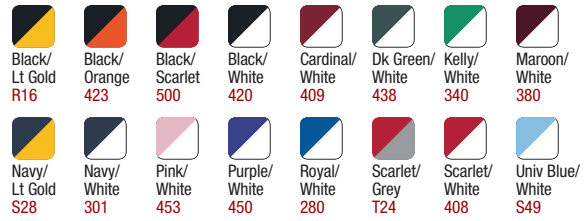
- Heavyweight oxford nylon, water-resistant
- Large main compartment with two-way zipper
- Bellowed front zippered pocket
- Ventilated side pockets sized for holding shoes or wet storage
- Padded construction, adjustable shoulder straps
- Size: 15" x 18" x 10"

229413 MSRP: \$32.00

Ventilated side shoe compartment

**REVERSIBLE!****HOME AND AWAY BAG/229414**

- Oxford nylon, water-resistant, medium weight
- Reversible design allows for front and back decoration
- Double drawstring cinch closure
- Inside zippered valuables pocket
- Size: 14" x 19"

229414 MSRP: \$10.00**DAY-PAK BAG/229409**

- Oxford nylon, water-resistant, medium weight
- Double drawstring cinch closure

229409 MSRP: \$10.00

- Inside zippered valuables pocket
- Size: 13" x 18"



Cardinal/ Black/ White T10	Lt Gold/ Black/ White T61	Pink/ Black/ White 685	Black/ Black/ White 529	Univ Blue/ Black/ White S50	Grey/ Scarlet/ White R08	Purple/ Black/ White 497	Orange/ Black/ White 322	Dk Green/ Black/ White 520	Maroon/ Black/ White 524	Royal/ Black/ White 526	Navy/ Black/ White 311	Scarlet/ Black/ White 952
-------------------------------------	------------------------------------	---------------------------------	----------------------------------	--------------------------------------	-----------------------------------	-----------------------------------	-----------------------------------	-------------------------------------	-----------------------------------	----------------------------------	---------------------------------	------------------------------------

**Ventilated exterior pocket****ULTIMATE-PAK BAG/229410**

- Oxford nylon, water-resistant, medium weight
- Ventilated exterior pocket, sized for holding shoes or wet storage

229410 MSRP: \$17.00

- Double drawstring cinch closure
- Inside zippered valuables pocket
- Size: 16.25" x 20"



Scarlet/ Black/ White 952	Orange/ Black/ White 322	Royal/ Black/ White 526	Purple/ Black/ White 497	Maroon/ Black/ White 524	Black/ Black/ White 529	Navy/ Black/ White 311	Dk Green/ Black/ White 520
------------------------------------	-----------------------------------	----------------------------------	-----------------------------------	-----------------------------------	----------------------------------	---------------------------------	-------------------------------------

NEW

ACTIVATE SOCK/ADULT 223810/ADULT XL 223610 INTERMEDIATE 223910/YOUTH 223210



- 55% polyester/22% nylon/20% cotton/3% spandex
- Wicks moisture
- Calf-length
- Extra cushioning and support in areas of the foot and ankle that are susceptible to rubbing, impact or injury
- Arch compression reduces fatigue and aids circulation
- Left and right foot construction for improved fit

223810 MSRP: \$10.00 ADULT 10-13
 223610 MSRP: \$10.00 ADULT XL 13-15
 223910 MSRP: \$10.00 INTERMEDIATE 9-11
 223210 MSRP: \$10.00 YOUTH 7-9



Cushion and Support in Foot and Ankle



NEW

COMPETE SOCK/ADULT 223811 INTERMEDIATE 223911/YOUTH 223211



- 75% acrylic/15% polyester/4% spandex/4% elastic/2% nylon
- Wicks moisture away from body
- Knee-length

223811 MSRP: \$8.00 ADULT 10-13
 223911 MSRP: \$8.00 INTERMEDIATE 9-11
 223211 MSRP: \$8.00 YOUTH 7-9

- Arch and ankle support
- Light weight microfiber yarns offer support while remaining soft to the touch

Rib Design Detail



17 COLORS!



NEW

REACT SOCK/ADULT 223812 INTERMEDIATE 223912/YOUTH 223212

- 80% acrylic/14% nylon/6% elastic
- Knee-length tube sock
- Fully cushioned foot

223812 MSRP: \$6.00 ADULT 10-13
 223912 MSRP: \$6.00 INTERMEDIATE 9-11
 223212 MSRP: \$6.00 YOUTH 7-9



Fully Cushioned Foot

COORDINATE SOCKS WITH ANY UNIFORM FOR A COMPLETE TEAM LOOK.



DECORATION



**+ NEW
VERTICAL
SINGLET**
see page 6

**+ NEW
APPROACH
SHORT**
see page 6

*Shown with
Sublimation design
template SB31*

ADVANTAGES FROM HOLLOWAY

Holloway gives you the winning formula for a complete solution. You and your customers benefit from our track record of delivering quality decoration. It's fast, easy and risk-free for you. With Holloway you receive:

- + Quick turn delivery**
- + Full range of cutting-edge decoration techniques**
- + No spoilage risk for embellishment errors**
- + Higher capacity without expense or stress**
- + Low 12-piece minimums**

VISIT DECORATION.HOLLOWAYUSA.COM FOR MORE INFORMATION ON ALL OF OUR DECORATION TECHNIQUES.

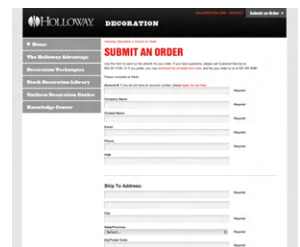
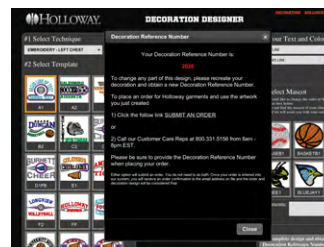
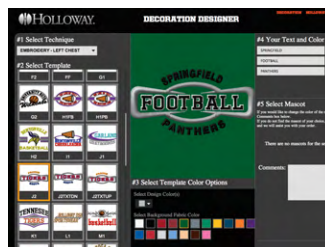
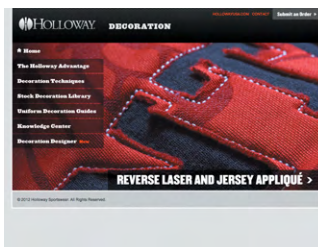
- + Sublimation
- + Reverse Laser and Jersey Applications
- + Traditional Appliqué
- + Embroidery
- + Laser Etch
- + Screen Print
- + All-Over Print
- + Digital Precision Print



NEW DECORATION DESIGNER

WHAT YOU SEE IS WHAT YOU GET WITH OUR NEW ONLINE DESIGN TOOL

+ Faster turn times + Instant art approval + Visual confirmation



- 1** Visit decoration.hollowayusa.com and select Decoration Designer.
- 2** Select your technique and template, then create your design. This tool lets you change the text, the mascot and colors.
- 3** Once completed, take note of your Decoration Reference Number and click submit an order.
- 4** Place your order online or call 1.800.331.5156. Make sure to have the Decoration Reference Number available to complete your order.

NEW SUBLIMATION DECORATION

Sublimation involves using a heat press to penetrate the ink into the fabric so that a permanent, full-color image is formed. The image is long-lasting, lightweight and resistant to scratching, peeling, cracking or fading.

Track

Baseball

Softball

Tops

Shorts

Fleece



SELECT

image artwork

Visit decoration.hollowayusa.com for a full library of images. Hi-Res images with no extra weight on the garment. Unlimited colors.



SELECT

design template

Utilize our stock designs or provide your own artwork.



FINISHED SUBLIMATION DECORATION

Sublimation gives you a full-color look with a great hand feel.
SB26 shown on Rocket Jersey 221216

Our Sublimation decoration technique is only available on select garments in white and neutral colors. Look for the "S" which designates the best garments to use for this technique.



SUBLIMATION DESIGN TEMPLATES (examples shown with image artwork)

Customize with your own images, mascots, text and colors. Visit decoration.hollowayusa.com to see all templates.



SB23



SB25



SB27



SB29



Sublimation Charges

Full Front or Chest Size ...\$11.50 Twill Add-on\$10.00
Uniform with player name or number, \$16.00 per side.

Outerwear/
Warmups

Accessories

Decoration



SUBLIMATION DECORATION

Our Photographic Image Artwork templates allow you to create vivid images for your decoration. Use in combination with a Sublimation design template or add to twill for an additional \$10.00. Supply your own image for a personalized look, \$50.00 MSRP art charge.

SPORTS



SS09 Baseball



SS10 Track

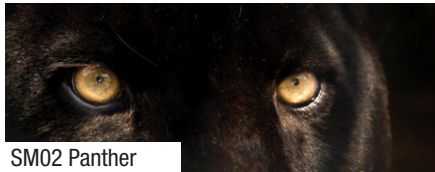


SS11 Softball

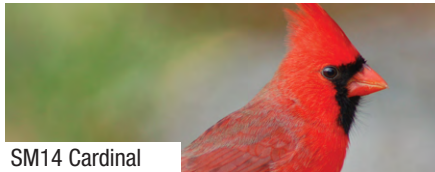


SS21 Cross Country

MASCOTS



SM02 Panther



SM14 Cardinal



SM19 Shark



SM22 Golden Eagle

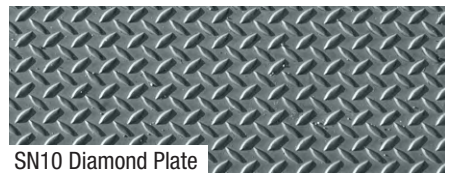
PATTERNS



SN06 Lightning



SN09 Digital Camo



SN10 Diamond Plate



SN16 Stars and Stripes

For a full library of stock images, visit decoration.hollowayusa.com.

DECORATE OUR NEW ERUPT SHIRT



Adult 228100/
Youth 228200



Ladies' 228300

The Erupt Shirt is constructed of an all-over Sublimation-printed fabric. Achieve the best decorating results by using the following for Screen Print decoration:

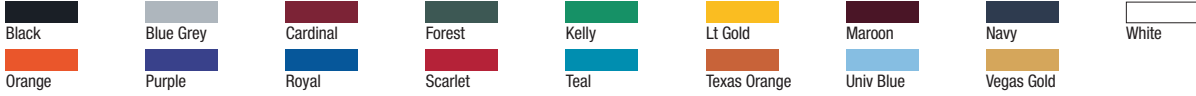
- + Recommend not to exceed 320 degree oven temperature
- + Oven Dwell Time should be minimized to facilitate reaching only the specified ink cure temperature
- + Use a reputable Plastisol ink, such as One Stroke brand
- + Utilize 2 strokes of an UB (under base) Base coat
- + Use 2 strokes of ink when printing the design



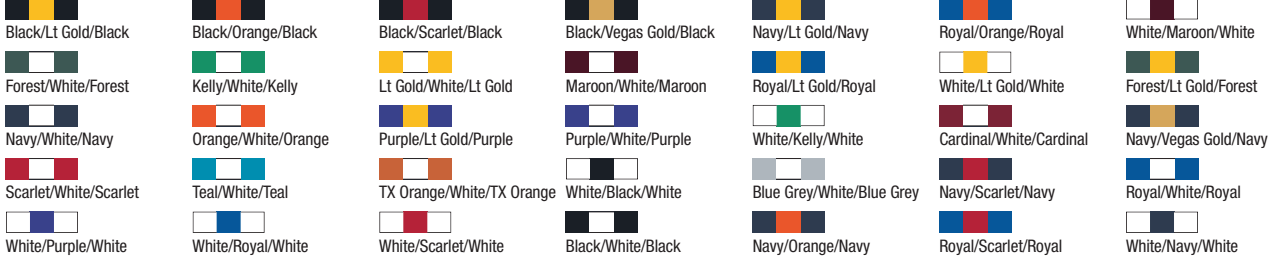
CUSTOM BRAID OPTIONS

BRAID COLOR OPTIONS

3/16" Solid



3/8" Striped



Track

Baseball

Softball

Tops

Shorts

Fleece

Outerwear/
Warmups

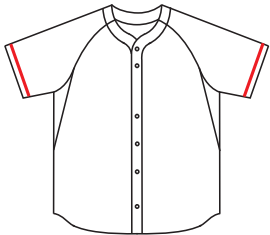
Accessories

Decoration

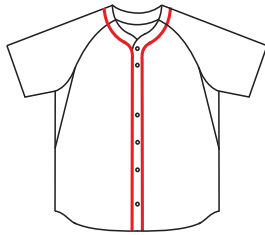


BASEBALL BRAID PLACEMENT AVAILABLE FOR STYLES 221009/221209, 221010/221210, 221014/221214, 221365/221465, 221362

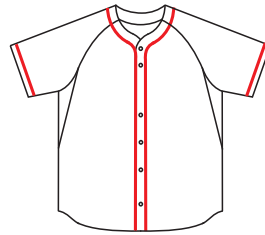
Jersey



Option 1



Option 2



Option 3

3/16" MSRP: \$10.50
3/8" MSRP: \$11.50

3/16" MSRP: \$11.50
3/8" MSRP: \$12.50

3/16" MSRP: \$15.00
3/8" MSRP: \$17.00

Vest



Option 1



Option 2



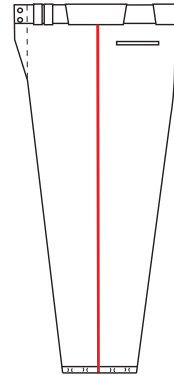
Option 3

3/16" MSRP: \$10.50
3/8" MSRP: \$11.50

3/16" MSRP: \$11.50
3/8" MSRP: \$12.50

3/16" MSRP: \$15.00
3/8" MSRP: \$17.00

Pant



Option 1

3/16" MSRP: \$10.00
3/8" MSRP: \$12.00

ORDER IN 3 EASY STEPS:

- 1 Select Style
- 2 Select Braid Placement
- 3 Select Braid Color and Size

LETTERING PLACEMENT

1 OR 2 COLOR



Tackle twill only on split front



Tackle twill or screen print



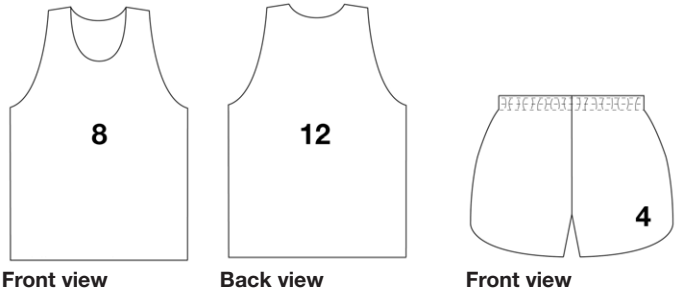
Tackle twill or screen print

3" or 4" team name, 4" or 6" front numbers, and 6" or 8" back numbers. Front lettering will be spaced 2" down from neck trim. Back numbers will be placed 7" down from neck trim on Adult's and 6" on Ladies'.



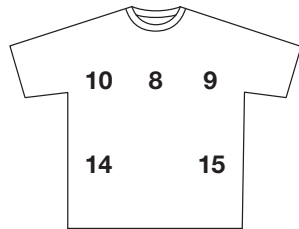
DECORATION AND SIZING CHART

PLACEMENT – TRACK

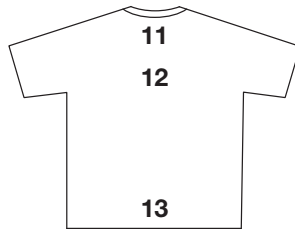


Full front team logo. 3 digit number on back, 4" available in Plain Block or Full Block. Location, placement and size may vary by style and design lines.

PLACEMENT – MULTI-SPORT

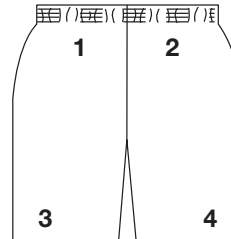


Front view
 8 – front center
 9 – left chest
 10 – right chest
 14 – mid right
 15 – mid left

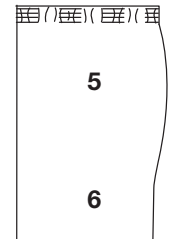


Back view
 11 – below collar seam
 12 – full back
 13 – across back extension

SHORTS



Front view
 1 – upper right
 2 – upper left
 3 – lower right
 4 – lower left



Side view
 5R – middle right center
 5L – middle left center
 6R – lower right side
 6L – lower left side

HOLLOWAY SIZING CHART

in inches

Adult Unisex	XXS	XS	S	M	L	XL	2X	3X	4X	5X	6X
Chest	26/28	30/32	34/36	38/40	42/44	46/48	50/52	54/56	58/60	62/64	66/68
Waist	22/23	24/26	28/30	32/34	36/38	40/42	44/46	48/50			
Youth Unisex			S	M	L	XL					
Size			6/8	10/12	14/16	18/20					
Chest			26/27	28/29	30/31	32/33					
Waist			22/23	24/25	26/27	28/30					
Ladies'			S	M	L	XL	2X				
Size			0/2	4/6	8/10	12/14	16/18	20/22			
Chest			31/33	33/35	36/38	38/40	41/43	44/46			
Waist			25/26	27/28	29/30	31/32	33/34	35/36			
Juniors'			S	M	L	XL	2X				
Size			0	1/3	5/7	9/11	13	15			
Chest			30/31	31/33	33/35	36/38	38/40	40/42			
Waist			22/24	24/26	26/28	28/30	30/32	32/34			
Girls'			S	M	L	XL					
Size			6/7	8/10	12/14	16					
Chest			25/26	27/29	29/31	31/33					
Waist			22/23	23/24	25/26	27/28					

For detailed product specifications visit hollowayusa.com

Tall Sizing

Tall sizes are represented with this icon: **TALL**

Available in styles 229610 and 229710.
 Bottoms: ½" longer rises, longer inseam (Adult–2.5"/Ladies'–1.5")

Track

Baseball

Softball

Tops

Shorts

Fleece

Outerwear/
Warmups

Accessories

Decoration

LETTERING AND NUMBERING STYLES OFFERED – SCREEN PRINT/TACKLE TWILL/SUBLIMATION

NUMBERING

Plain Block
(1 or 2 Color)

1 2 3 4 5 6 7 8 9 0

Crillee
(2 Color Screen
Print only)

1 2 3 4 5 6 7 8 9 0

Full Block
(1 or 2 Color)

1 2 3 4 5 6 7 8 9 0

Century
(1 or 2 Color)

1 2 3 4 5 6 7 8 9 0

Pro Block
(2 Color Screen
Print only)

1 2 3 4 5 6 7 8 9 0

Fancy
(1 or 2 Color)

1 2 3 4 5 6 7 8 9 0

Shadow Block
(2 Color)

1 2 3 4 5 6 7 8 9 0

LETTERING

Plain Block
(1 or 2 Color)

A B C D E F G H I J K L M N O P Q R S T U V W X Y Z

Full Block
(1 or 2 Color)

A B C D E F G H I J K L M N O P Q R S T U V W X Y Z

Pro Block
(2 Color Screen
Print only)

A B C D E F G H I J K L M N O P Q R S T U V W X Y Z

Shadow Block
(2 Color)

A B C D E F G H I J K L M N O P Q R S T U V W X Y Z

Crillee
(2 Color Screen
Print only)

A B C D E F G H I J K L M N O P Q R S T U V W X Y Z

Century
(1 or 2 Color)

A B C D E F G H I J K L M N O P Q R S T U V W X Y Z

Fancy
(1 or 2 Color)

A B C D E F G H I J K L M N O P Q R S T U V W X Y Z

Script
(1 or 2 Color)

A B C D E F G H I J K L M N O P Q R S T U V W X Y Z
a b c d e f g h i j k l m n o p q r s t u v w x y z

ORDERING INFORMATION

Customer care representatives are available 8 a.m. to 8 p.m. EST by calling 1.800.331.5156.

In-stock blank orders can be placed until 6 p.m. EST and shipped same day. (Hours may be reduced to 8 a.m. to 6 p.m. EST during non-peak season).

You may also order online 24/7 at hollowayusa.com.

Shipping F.O.B. Sidney, OH

Delivery

In-stock items – same-day shipment (if order is received by 6 p.m. EST) on undecorated items. Custom order – call Customer Service for delivery schedule. For decorated product, visit decoration.hollowayusa.com for up-to-date lead times.

Sales Agreement

All orders are subject to factory acceptance. Custom orders may not be cancelled. No returns accepted without return authorization.

Terms

Net 30 days. Past due invoices will be assessed an interest charge of 2% per month, 24% annual rate.

Sizing

(see page 73)
For help with sizing, contact Customer Service to provide sizing samples.

Warranty

Holloway Sportswear, Inc. guarantees all products to be free from manufacturing defects for a period of one year from date of purchase. This warranty gives you specific legal rights, and you may also have other rights which vary from state to state.

Return Policy

To return merchandise, contact Customer Service at 1.800.331.5156 for a return authorization number. Please apply this number to the outside of the returned carton. **Request for returns must be made within 30 days from date of shipment.** Returned stock goods may be subject to a 15% restocking fee. Special orders and decorated items are nonreturnable. **One sample per style and color can be ordered at 50% off and returned for credit.**

Prices subject to change without notice.

INDEX

New styles are highlighted in RED.
New sizes and colors are highlighted in GREEN.

Numerical Index

STYLE# NAME	PAGE #				
221000 Octane Jersey	14				
221001 Razor Jersey	14				
221007 Core Belt	19, 31				
221008 Diamond Jersey	17				
221009 Grandslam Jersey	16				
221010 Shut-Out Jersey	16				
221011 Ignite Jersey	15				
221012 Fierce Jersey	15				
221013 Havoc Pant	19				
221014 Phenom Pant	19				
221015 Contender Jersey	13				
221016 Rocket Jersey	11				
221040 Vertical Singlet	6				
221041 Approach Short	6				
221042 Sprinter Singlet	8				
221043 Lead Short	8				
221200 Youth Octane Jersey	14				
221201 Youth Razor Jersey	14				
221209 Youth Grandslam Jersey	16				
221210 Youth Shut-Out Jersey	16				
221211 Youth Ignite Jersey	15				
221212 Youth Fierce Jersey	15				
221213 Youth Havoc Pant	19				
221214 Youth Phenom Pant	19				
221215 Youth Contender Jersey	13				
221216 Youth Rocket Jersey	11				
221242 Youth Sprinter Singlet	8				
221243 Youth Lead Short	8				
221340 Ladies' Vertical Singlet	7				
221341 Ladies' Approach Short	7				
221342 Ladies' Sprinter Singlet	9				
221345 Ladies' Breakline Short	9				
221359 Ladies' Rematch Jersey	28				
221360 Ladies' Eliminator Jersey	25				
221361 Ladies' Rage Jersey	26				
221363 Ladies' Finisher Short	26				
221365 Ladies' Mayhem Pant	31				
221366 Ladies' Energy Jersey	27				
221367 Ladies' Homeplate Jersey	27				
221368 Ladies' Rise Jersey	23				
221369 Ladies' Blaze Jersey	25				
221373 Ladies' Mercy Pant	30				
221459 Girls' Rematch Jersey	28				
221465 Girls' Mayhem Pant	31				
221468 Girls' Rise Jersey	23				
221473 Girls' Mercy Pant	30				
222202 Youth Ballistic Shirt	34				
222204 Youth Launch Shirt	37				
222249 Youth Zoom Shirt	18, 37				
222253 Girls' Flex Shirt	29				
222259 Youth Spark Shirt	38				
222263 Youth Streak Shirt	18				
222271 Youth Exult Shirt	18				
222272 Youth Electrify Shirt	34				
222302 Ladies' Ballistic Shirt	34				
222316 Ladies' Explosion Polo	37				
222317 Ladies' Adapt Polo	37				
222318 Ladies' Fusion Shirt	35				
222349 Ladies' Zoom Shirt	28, 37				
222353 Ladies' Flex Shirt	29				
222364 Ladies' Spark Shirt	38				
222365 Ladies' Optimal Polo	36				
222371 Ladies' Exult Shirt	28				
222372 Ladies' Electrify Shirt	29, 34				
222374 Ladies' Condition Training Top	39				
222379 Ladies' Contour Pant	45				
222402 Ballistic Shirt	34				
222404 Launch Shirt	37				
222416 Explosion Polo	37				
222417 Adapt Polo	37				
222418 Fusion Polo	35				
222433 Jumpshot Shirt	40				
222447 Vapor Shirt	17, 39				
222448 Fuel Shirt	39				
222449 Zoom Shirt	18, 37				
222459 Spark Shirt	38				
222463 Streak Shirt	18				
222465 Optimal Polo	36				
222471 Exult Shirt	18				
222472 Electrify Shirt	34				
222474 Condition Training Top	39				
222475 Clincher Shirt	38				
222477 Wrath Shirt	40				
222480 Chaos Hoodie	45				
222481 Frenzy Pant	45				
222484 Hype Hoodie	45				
222489 Wipeout Hoodie	43				
222800 Boom Hoodie	44				
222808 Fuse Hoodie	43				
222809 Unify Pant	43				
222828 Youth Fuse Hoodie	43				
222829 Youth Unify Pant	43				
223210 Activate Sock - Youth	67				
223211 Compete Sock - Youth	67				
223212 React Sock - Youth	67				
223610 Activate Sock - XL	67				
223810 Activate Sock	67				
223811 Compete Sock	67				
223812 React Sock	67				
223910 Activate Sock - Intermediate	67				
223911 Compete Sock - Intermediate	67				
223912 React Sock - Intermediate	67				
228100 Erupt Shirt	12, 33				
228200 Youth Erupt Shirt	12, 33				
228249 Youth Rookie Jersey	20				
228253 Girls' Curve Jersey	20				
228263 Youth Ball Park Jersey	20				
228300 Ladies' Erupt Shirt	24, 33				
228353 Ladies' Curve Jersey	20				
228449 Rookie Jersey	20				
228463 Ball Park Jersey	20				
229025 Convective Jacket	55				
229026 Composite Pant	55				
229029 Recruit Pullover	51				
229036 Vigor Pant	63				
229037 Transform Pullover	62				
229056 Pacer Pant	60				
229059 Charger Jacket	60				
229062 Aggression Jacket	60				
229076 Collision Jacket	59				
229094 Adrenaline Jacket	58				
229095 Sable Pant	59				
229097 Victory Pullover	57				
229107 Acclaim Pullover	56				
229108 Destroyer Pullover	56				
229109 Illusion Jacket	53				
229110 Trance Pant	53				
229111 Homefield Jacket	58				
229112 Conversion Pullover	57				
229116 Shock Jacket	54				
229120 Invigorate Jacket	52				
229122 Commence Pullover	51				
229123 Accelerate Pant	52				
229131 Dedication Jacket	62				
229132 Traction Pant	63				
229133 Strato Jacket	48				
229134 Exo Pant	50				
229138 Crossover Jacket	49				
229140 Heritage Jacket	61				
229149 Olympian Jacket	61				
229150 Defender Pant	61				
229158 Stability Jacket	54				
229159 Circulate Jacket	54				
229207 Youth Acclaim Pullover	56				
229208 Youth Destroyer Pullover	56				
229211 Youth Homefield Jacket	58				
229220 Youth Invigorate Jacket	52				
229222 Youth Commence Pullover	51				
229223 Youth Accelerate Pant	52				
229231 Youth Dedication Jacket	62				
229232 Youth Traction Pant	63				
229236 Youth Vigor Pant	63				
229237 Youth Transform Pullover	62				
229255 Youth Hustle Short	41				
229256 Youth Pacer Pant	60				
229257 Youth Simulate Short	41				
229259 Youth Charger Jacket	60				
229262 Youth Aggression Jacket	60				
229266 Youth Mobility Short	41				
229276 Youth Collision Jacket	59				
229294 Youth Adrenaline Jacket	58				
229295 Youth Sable Pant	59				
229297 Youth Victory Pullover	57				
229309 Ladies' Illusion Jacket	53				
229310 Ladies' Trance Pant	53				
229319 Ladies' Propel Short	42				
229320 Ladies' Invigorate Jacket	52				
229323 Ladies' Accelerate Pant	52				
229325 Ladies' Energize Short	42				
229331 Ladies' Dedication Jacket	62				
229332 Ladies' Traction Pant	63				
229333 Ladies' Strato Jacket	48				
229334 Ladies' Exo Pant	50				
229336 Ladies' Vigor Pant	63				
229337 Ladies' Transform Pullover	62				
229338 Ladies' Crossover Jacket	49				
229355 Ladies' Hustle Short	29, 42				
229403 Medium Regulation Bag	64				
229404 Large Regulation Bag	64				
229409 Day-Pak Bag	66				
229410 Ultimate-Pak Bag	66				
229411 League Bag	65				
229412 Tournament Bag	65				
229413 Sportsman Backpack	66				
229414 Home and Away Bag	66				
229419 Girls' Propel Short	42				
229425 Girls' Energize Short	42				
229551 Power Short	41				
229555 Hustle Short	41				
229557 Simulate Short	41				
229566 Mobility Short	41				
229610 Trance Pant - Tall	53				
229710 Ladies' Trance Pant - Tall	53				

Track

Baseball

Softball

Tops

Shorts

Fleece

Outerwear/
Warmups

Accessories

Index



DISTRIBUTED BY

HOLLOWAYUSA.COM 1.800.331.5156 SIDNEY, OH 45365

Copyright 2013 Holloway Sportswear, Inc. All rights reserved Price \$2.50 Printed in U.S.A.