



HIGH FIVE



2012 SOCCER

1-COLOR

FULL BLOCK

HIGH FIVE

SUPREME

HIGH FIVE

BRUSH SCRIPT

High Five

BRIQUET

HEAT TRANSFER ONLY

High Five

COLLEGE

HIGH FIVE

PRO ANTIQUE

HEAT APPLIED PERMANENT TWILL ONLY

HIGH FIVE

ATHLETIC SCRIPT

HEAT APPLIED PERMANENT TWILL ONLY

High Five

2-COLOR

FULL BLOCK

HIGH FIVE

SUPREME

HIGH FIVE

BRUSH SCRIPT

High Five

BRIQUET

HEAT TRANSFER ONLY

High Five

COLLEGE

HIGH FIVE

PRO ANTIQUE

HEAT APPLIED PERMANENT TWILL ONLY

HIGH FIVE

ATHLETIC SCRIPT

HEAT APPLIED PERMANENT TWILL ONLY

High Five

TYPE MODIFICATIONS

BOOKENDS

HIGH FIVE

FLAT TOP ARCH

HIGH FIVE

STRAIGHT

HIGH FIVE

VERTICAL ARCH

HIGH FIVE

1-COLOR WITH TAIL

BRUSH SCRIPT OR BRIQUET

HEAT TRANSFER ONLY

High Five

ATHLETIC SCRIPT

HEAT APPLIED PERMANENT TWILL ONLY

High Five

2-COLOR WITH TAIL

BRUSH SCRIPT OR BRIQUET

HEAT TRANSFER ONLY

High Five

ATHLETIC SCRIPT

HEAT APPLIED PERMANENT TWILL ONLY

High Five

NUMBERING - HEAT TRANSFER

FULL BLOCK 1 OR 2 COLOR (AVAILABLE IN 4", 6", 8", 10")

0123456789

OUTLINE 1 OR 2 COLOR (AVAILABLE IN 4", 6", 8", 10")

0123456789

SPORT WHITE WITH BLACK OUTLINE (AVAILABLE IN 8")

0123456789

NUMBERING - HEAT APPLIED PERMANENT TWILL

PRO TEAM 1 OR 2 COLOR (AVAILABLE IN 4", 6", 8", 10")

0123456789

PRO ANTIQUE 1 OR 2 COLOR (AVAILABLE IN 4", 6", 8", 10")

0123456789

AVAILABLE COLORS

**Available in Heat Transfer Only*



DECORATION PLACEMENT

- A** 4" OR 6" # ON FRONT CHEST - CENTERED
- B** 4" OR 6" # ON FRONT CHEST - LOWER LEFT
- C** 4", 6" OR 8" # ON BACK - CENTERED
- D** 4" # ON SHORT LEG
- E** FULL CHEST SIZED LOGO (ON FRONT OR BACK)

- F** LEFT CHEST SIZED LOGO (ON JERSEY OR SHORT LEG)
 - G** TEAM NAME ABOVE NUMBER ON BACK
 - H** LOGO INSIDE DIAMOND PANEL (BASKETBALL JERSEYS ONLY)
- SHOWN BELOW ARE TYPICAL LOGO, LETTERING, & NUMBERING LAYOUTS.**
A HIGH 5 REPRESENTATIVE CAN HELP WITH YOUR DECORATION IDEAS.

SOCCER



TRAINING BASICS



FIELD HOCKEY / LACROSSE



OUTERWEAR



POLICIES AND TERMS

Use our Team Decorator Order Form located in our Price Guide to fax or e-mail orders. We reserve the right to accept or reject any order. No orders of questionable taste will be reproduced. Charges may be incurred for changes or cancellation of orders already in progress.

MINIMUM QUANTITIES

10 pcs. minimum for team logos and numbering. Please see our published Price Guide for details regards qty./price levels.

DECORATION PRODUCTION TIME

Call Customer Service for current lead-time. Typically, orders are completed within 10-12 business days. There will be a \$40.00 surcharge on all Rush Orders.

ARTWORK CHARGES

Team Names/Designs in fonts other than those typestyles offered as stock will require a digitizing/art charge, **except for Digitized designs (vector format) supplied on a disk or sent by e-mail and re-orders.** Artwork should be sent in vector format, and saved as either an EPS or PDF file. We use Adobe Illustrator CS3 to manage artwork.

LOGOS

Some restrictions regards logo placement may apply either due to the individual logo or the garment design. A High 5 Sportswear representative will help determine the best size for your logo based on location, uniform size range and garment design.

PROOFS

We will fax or e-mail a copy of your custom art for approval. Customer approval of the artwork for production is required. High 5 is not responsible for spelling errors if the artwork has been approved by the customer.

RE-ORDERS

Please reference the previous order (invoice number, purchase order, description, date) to help ensure all decoration specs are followed as before.

CARE INSTRUCTIONS OF DECORATED GARMENTS

Although heat transfers and tackle twill can withstand warm machine wash and cool tumble dry, we recommend that garments be machine washed and line dried to maximize life and minimize color fading, etc. Do not use fabric softener. **DO NOT USE INDUSTRIAL DRYERS.**

CHECK OUT OUR NEW UNIFORM BUILDER ONLINE AT HIGH5SPORTSWEAR.COM

QUICK EASY STEPS

- Pick a sport
- Select a Uniform
- Personalize Uniform & Flyer
- Email, Download & Print!



DECORATING YOUR SOCCER PROGRAM

SPORT

0 1 2 3 4 5 6 7 8 9

OUTLINE

0 1 2 3 4 5 6 7 8 9



THESE STOCK NUMBER STYLES ARE USED TO DECORATE SOCCER LEAGUE/PACKAGE ORDERS:
 'SPORT' NUMBERS ARE WHITE WITH BLACK SURROUND. ALL JERSEY COLORS GET THE SAME 2-COLOR LOOK IN THIS STYLE. 'OUTLINE' NUMBERS ARE WHITE OR BLACK INK. HIGH 5 WILL APPROPRIATELY MATCH EITHER COLOR WITH THE JERSEY COLOR.

STANDARD LEAGUE SOCCER LOGOS ARE APPLIED TO THE LEFT CHEST AND SHOULD APPROXIMATELY FIT INSIDE A 3 1/2" SQUARE. HIGH 5 WILL HELP YOU DETERMINE THE LOGO SIZE BEST SUITED TO THE GARMENT DESIGN AND THE SIZE RANGE OF YOUR ORDER.

(The Alliance jersey, Flash jersey, and Flux jersey will have logos applied to the center chest, per the jersey designs.)

IT'S EASY TO ORDER WITH CONFIDENCE.

TO FIND THE FIT YOU NEED, SIMPLY MATCH YOUR MEASUREMENTS (IN INCHES) TO THE CHARTS PROVIDED BELOW.

PLEASE FOLLOW THESE HELPFUL HINTS

TO HAVE YOUR COMPLETE UNIFORM PACKAGE ORDER READY FOR GAME DAY.

SIZING: For specific sizing measurements please use our size charts. If you need additional sizing assistance please contact our customer service department or refer to the team sizing estimate chart.

PRINTING: Ask your local dealer for a High 5 Printing Package Order form. This order form will be used to custom print your league order. A club logo will be printed on the left chest of the jersey. 8" block outline numbers are printed consecutively beginning with #1 or #2 by team set. All printing is either black or white ink. Printed orders will be bundled into team sets. Some printing restrictions do apply; please call our customer service department for more details.

SHIPPING: High 5 stocks all merchandise to service our customers with unmatched delivery. Orders without printing will ship complete within 2-6 days. Printed orders will be shipped complete within 3-6 weeks from receipt of the complete order including art. Delivery times are based on seasonal ordering. Please call customer service for shipping timeline. All orders will be shipped UPS-GROUND unless otherwise requested by the dealer.

AGE GROUP TEAM SIZING ESTIMATE

DIVISION	PLAYERS	YS	YM	YL	AS	AM	AL	AXL	BALL SIZE
U-6 B/G	13	10	3						3
U-7 B/G	13	8	4	1					3
U-8 B/G	13		9	4					4
U-10 B/G	15		4	7	4				4
U-12 B/G	17			4	8	5			5
U-14 G	17				7	7	3		5
U-14 B	17				4	7	6		5
U-16 G	18				4	8	6		5
U-16 B	18					5	10	3	5
U-19 G	19					5	10	4	5
U-19 B	19					2	9	8	5
SOCK SIZES		SMALL	MEDIUM	LARGE					

Please note this sizing is only an estimate based on average orders. This should be used only as a guideline when ordering. High 5 Sportswear is not responsible for any returns resulting from the use of these size recommendations. Also please note sizing varies depending on the jersey. Please refer to the size charts below.

FIRST OFFER DATE: 12/1/11 | END DATE: 11/1/15

LIBERTY JERSEY

22780 Adult **MSRP**

AS, AM, AL, AXL **\$17.50**

A2XL **\$21.50**

22781 Youth **MSRP**

YXS, YS, YM, YL **\$15.50**

- 100% polyester with Essortex moisture management performance
- Sewn-in contrast panels
- Self-fabric crew neck
- Double-needle bottom hems



WHITE/ROYAL



COLUMBIA BLUE/WHITE



BLACK/WHITE



WHITE/SCARLET



SILVER GREY/BLACK



NAVY/WHITE



WHITE/BLACK



ATHLETIC GOLD/WHITE



MAROON/WHITE



KELLY/WHITE



ORANGE/WHITE



SCARLET/WHITE



ROYAL/WHITE



RASPBERRY/WHITE



FOREST/WHITE



LIME/BLACK



PURPLE/WHITE

ORBIT JERSEY

22760 Adult	MSRP
AS, AM, AL, AXL	\$24.00
A2XL	\$28.00
22761 Youth	MSRP
YXS, YS, YM, YL	\$22.20

- 100% polyester with Essortex moisture management performance
- Sewn-in contrast shoulder panels with piping detail
- Contrast rib knit V-neck
- Double-needle bottom hems



TEAL/BLACK/WHITE



BLACK/WHITE/WHITE



PURPLE/BLACK/WHITE



NAVY/BLACK/WHITE



MAROON/BLACK/WHITE



SCARLET/BLACK/WHITE



FOREST/BLACK/WHITE



SILVER GREY/BLACK/WHITE



ATHLETIC GOLD/BLACK/WHITE



COLUMBIA BLUE/BLACK/WHITE



ORANGE/BLACK/WHITE



RASPBERRY/BLACK/WHITE



WHITE/WHITE/WHITE



LIME/BLACK/WHITE



KELLY/BLACK/WHITE



ROYAL/BLACK/WHITE

FIRST OFFER DATE: 12/1/11 | END DATE: 11/1/14



FLUX JERSEY

22790 Adult MSRP

AS, AM, AL, AXL \$24.90

A2XL \$28.90

22791 Youth MSRP

YS, YM, YL \$22.90



- 100% polyester with Essortex moisture management performance
- Two-color SUBLIMATED center front inset panel
- Contrast sewn-in shoulder panels
- Contrast rib knit V-neck
- Double-needle bottom hems
- **SOME SLIGHT SHADING MAY OCCUR IN PRODUCTS WITH SUBLIMATED PANELS**



BLACK/WHITE/BLACK



FOREST/WHITE/BLACK



NAVY/WHITE/BLACK



SILVER GREY/BLACK/WHITE



ATHLETIC GOLD/BLACK/WHITE



COLUMBIA BLUE/BLACK/WHITE



ORANGE/BLACK/WHITE



ROYAL/WHITE/BLACK



LIME/BLACK/WHITE



TEAL/BLACK/WHITE



KELLY/BLACK/WHITE



RASPBERRY/BLACK/WHITE



WHITE/BLACK/WHITE



MAROON/WHITE/BLACK



PURPLE/WHITE/BLACK



SCARLET/WHITE/BLACK



FIRST OFFER DATE: 12/1/11 | END DATE: 11/1/14



HELIX JERSEY

FIRST OFFER DATE: AT ONCE | END DATE: 11/1/14

22740 Adult **MSRP**

AS, AM, AL, AXL **\$23.50**

A2XL **\$27.50**

22741 Youth **MSRP**

YS, YM, YL **\$20.00**



- 100% polyester with Essortex moisture management performance fabric
- Contrast textured jacquard front panel insets with piping detail on sleeves and front
- Modified self-fabric V-neck
- Double-needle hems



MAROON/BLACK/WHITE



PURPLE/BLACK/WHITE



ROYAL/BLACK/WHITE



SCARLET/BLACK/WHITE



KELLY/WHITE/BLACK



FOREST/BLACK/WHITE



WHITE/WHITE/BLACK



BLACK/BLACK/WHITE



ATHLETIC GOLD/WHITE/BLACK



RASPERRY/WHITE/BLACK



NAVY/BLACK/WHITE



COL BLUE/WHITE/BLACK



ORANGE/WHITE/BLACK



TEAL/WHITE/BLACK



LIME/WHITE/BLACK



SILVER GREY/WHITE/BLACK



FIRST OFFER DATE: AT ONCE | END DATE: 11/1/14

GENESIS JERSEY

22730 Adult **MSRP**

AS, AM, AL, AXL **\$19.00**

A2XL **\$23.00**

22731 Youth **MSRP**

YXS, YS, YM, YL **\$17.00**



- 100% polyester Essortex moisture management performance fabric
- Contrast shoulder panels
- Contrast rib knit V-neck



NAVY/WHITE



SCARLET/WHITE



ROYAL/WHITE



RASPBERRY/WHITE



FOREST/WHITE



MAROON/WHITE



PURPLE/WHITE



BLACK/WHITE



TEAL/WHITE



ATHLETIC GOLD/WHITE



WHITE/BLACK



ORANGE/WHITE



KELLY/WHITE



LIME/WHITE



COL BLUE/WHITE



SILVER GREY/BLACK



ARSENAL JERSEY

22750 Adult	MSRP
AS, AM, AL, AXL	\$19.00
A2XL	\$23.00
22751 Youth	MSRP
YXS, YS, YM, YL	\$17.00

- 100% polyester with Essortex moisture management performance fabric
- Contrast piping on sleeve hems and side seams
- Rib knit V-neck
- Double-needle bottom hems



FIRST OFFER DATE: AT ONCE | END DATE: 11/1/14



FIRST OFFER DATE: AT ONCE | END DATE: 11/1/13

TEMPEST JERSEY

22710 Adult	MSRP
AS, AM, AL, AXL	\$23.50
A2XL	\$27.50
22711 Youth	MSRP
YXS, YS, YM, YL	\$21.30

- 100% polyester Essortex moisture management performance fabric
- Sewn-in contrast panels with piping detail
- Contrast rib knit V-neck



ROYAL/BLACK/WHITE

WHITE/ROYAL/BLACK

PURPLE/BLACK/WHITE

ATHLETIC GOLD/BLACK/WHITE

SILVER GREY/BLACK/WHITE

SCARLET/NAVY/WHITE

BLACK/WHITE/WHITE

WHITE/BLACK/BLACK

FOREST/BLACK/WHITE

WHITE/SCARLET/BLACK

LIME/NAVY/WHITE

ORANGE/NAVY/WHITE

KELLY/BLACK/WHITE

RASPBERRY/BLACK/WHITE

COL BLUE/NAVY/WHITE

MAROON/BLACK/WHITE

NAVY/BLACK/WHITE

PREMIER JERSEY

22570 Adult **MSRP**

AS, AM, AL, AXL **\$24.90**

A2XL **\$28.90**

22571 Youth **MSRP**

YS, YM, YL **\$22.90**

- 100% soft-touch polyester with Essortex moisture management performance
- Two-color design with contrasting piping except on White/White
- Self-fabric and rib knit combination crew neck

FIRST OFFER DATE: AT ONCE | END DATE: CARRY OVER



NAVY/BLACK/WHITE



RASPBERRY/BLACK/WHITE



SLATE BLUE/BLACK/WHITE



SCARLET/BLACK/WHITE



WHITE/SCARLET/BLACK



KELLY/BLACK/WHITE



ROYAL/BLACK/WHITE



WHT/ROYAL/BLACK



COL BLUE/BLACK/WHITE



GOLD/BLACK/WHITE



CARDINAL/BLACK/WHITE



LIME/BLACK/WHITE



WHITE/BLACK/BLACK



WHITE/WHITE



SILVER/BLACK/WHITE



FOREST/BLACK/WHITE



PURPLE/BLACK/WHITE



ORANGE/BLACK/WHITE



TEAL/BLACK/WHITE



VEGAS GOLD/BLACK/WHITE



PINK/BLACK/WHITE



STADIUM JERSEY

22610 Adult **MSRP**

AS, AM, AL, AXL **\$20.30**

A2XL **\$24.30**

22611 Youth **MSRP**

YXS, YS, YM, YL **\$18.30**

- 100% soft-touch polyester with Essortex moisture management performance
- Short raglan sleeves with contrasting piping
- Self-fabric V-neck



HORIZON JERSEY

22690 Adult **MSRP**

AS, AM, AL, AXL **\$18.90**

A2XL **\$22.90**

22691 Youth **MSRP**

YXS, YS, YM, YL **\$17.80**

- 100% polyester with Essortex moisture management performance
- Contrast piping across front chest
- Contrast rib knit crew neck
- Double-needle hems
- See the coordinating Horizon Short on Page 24



FIRST OFFER DATE: AT ONCE | END DATE: CARRY OVER



SCARLET/WHITE

SILVER/BLACK

BLACK/WHITE

WHITE/WHITE

ROYAL/WHITE



CARDINAL/WHITE

PINK/BLACK

GOLD/BLACK

FOREST/WHITE

PURPLE/WHITE



NAVY/WHITE

TEAL/BLACK

KELLY/WHITE

RASPBERRY/BLACK

ORANGE/BLACK



LIME/BLACK

VEGAS GOLD/BLACK

COLUMBIA BLUE/BLACK

SLATE BLUE/WHITE

FIRST OFFER DATE: AT ONCE | END DATE: CARRY OVER



NAVY/WHITE

LIME/BLACK

CARDINAL/WHITE

WHITE/BLACK



FOREST/WHITE

ROYAL/WHITE

BLACK/WHITE

TEAL/BLACK



SCARLET/WHITE

SILVER/BLACK

RASPBERRY/BLACK

PURPLE/WHITE



KELLY/WHITE

COLUMBIA BLUE/BLACK

ATH GOLD/BLACK

ORANGE/BLACK

STARTER JERSEY

FIRST OFFER DATE: AT ONCE | END DATE: 11/1/12

22010 Adult **MSRP**

AS, AM, AL, AXL **\$15.30**

A2XL **\$19.30**

22011 Youth **MSRP**

YS, YM, YL **\$13.50**

- 100% polyester high-sheen jacquard
- Short set-in sleeves with contrasting piping
- Fashionable two-color jacquard V-neck trim



CASCADE JERSEY

FIRST OFFER DATE: AT ONCE | END DATE: 11/1/12

22600 Adult **MSRP**

AS, AM, AL, AXL **\$25.90**

A2XL **\$29.90**

22601 Youth **MSRP**

YS, YM, YL **\$22.90**

- 100% polyester vertical eyelet jacquard with Essortex moisture management performance
- Short raglan sleeves
- Three-color design with contrasting soft-touch polyester shoulder panels except on White/White
- Self-fabric V-neck



FABRIC DETAIL - ACTUAL SIZE

FIRST OFFER DATE: AT ONCE | END DATE: 11/1/12

FLASH JERSEY

22660 Adult MSRP

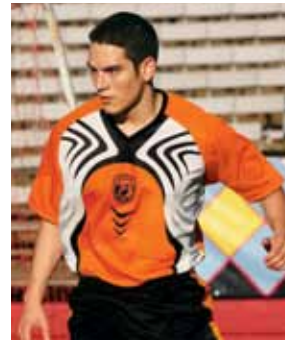
AS, AM, AL, AXL **\$24.50**

A2XL **\$28.50**

22661 Youth MSRP

YS, YM, YL **\$21.50**

- 100% soft-touch polyester with Essortex moisture management performance
- Three-color SUBLIMATED body with solid color raglan sleeve
- Rib knit V-neck trim
- **SOME SLIGHT SHADING MAY OCCUR IN PRODUCTS WITH SUBLIMATED PANELS**



PURPLE/WHITE/BLACK



FOREST/WHITE/BLACK



WHITE/ROYAL/BLACK



ROYAL/WHITE/BLACK



WHITE/SCARLET/BLACK



COL BLUE/WHITE/BLACK



SCARLET/WHITE/BLACK



CARDINAL/WHITE/BLACK



WHITE/WHITE/BLACK



KELLY/WHITE/BLACK



ORANGE/WHITE/BLACK



NAVY/WHITE/BLACK



LIME/WHITE/BLACK



GOLD/WHITE/BLACK



SILVER/WHITE/BLACK



DYNAMIC REVERSIBLE JERSEY

72550 Adult **MSRP**

AS, AM, AL, AXL **\$33.50**

A2XL **\$37.50**

72551 Youth **MSRP**

YS, YM, YL **\$30.90**

- 100% polyester with Essortex moisture management performance
- Reverses to 100% polyester mini mesh
- Color-blocked detailing
- Clean finished sleeve hems
- Double-needle bottom hems: layers hemmed separately for easy embellishment



SCARLET/WHITE/ROYAL



BLACK/WHITE



MAROON/WHITE



COLUMBIA BLUE/WHITE



ROYAL/WHITE



SCARLET/WHITE



NAVY/WHITE



KELLY/WHITE



ROYAL/WHITE/ATH GOLD



ORANGE/WHITE



BLACK/WHITE/ATH GOLD



FABRIC DETAIL

FIRST OFFER DATE: AT ONCE | END DATE: CARRY OVER



MINI MESH REVERSIBLE JERSEY

FIRST OFFER DATE: AT ONCE | END DATE: CARRY OVER

22580 Adult	MSRP
AS, AM, AL, AXL	\$23.00
A2XL	\$27.00
22581 Youth	MSRP
YS, YM, YL	\$20.50

- 100% polyester mini mesh
- Reversible home and away look provides two jerseys in one
- Short raglan sleeve
- Rib knit crew neck and sleeve cuffs



BLACK/WHITE*



COLUMBIA BLUE/WHITE



ROYAL/WHITE



SCARLET/ROYAL/WHITE



SCARLET/WHITE



KELLY/GOLD



MAROON/WHITE



GOLD/ROYAL



NAVY/WHITE



ORANGE/WHITE

SINGLE LAYER REVERSIBLE JERSEY

FIRST OFFER DATE: AT ONCE | END DATE: CARRY OVER

22420 Adult	MSRP
AS, AM, AL, AXL	\$21.50
A2XL	\$25.50
22421 Youth	MSRP
YS, YM, YL	\$20.10

- This 100% polyester SINGLE LAYER jersey provides two colors, converting to either home or away
- Crossover crew neck with raglan sleeves
- **THIS JERSEY ACCEPTS HEAT TRANSFER NUMBERING AND LETTERING ONLY**
- **WILL NOT ACCEPT SILKSCREENING**



GOLD/ROYAL



ROYAL/WHITE



KELLY/WHITE



SCARLET/WHITE



FOREST/WHITE

ULTRA T-SHIRT

FIRST OFFER DATE: AT ONCE | END DATE: CARRY OVER

22520 Adult	MSRP
AS, AM, AL, AXL	\$7.50
A2XL	\$12.00
22521 Youth	MSRP
YS, YM, YL	\$7.10

- Gildan Ultra Blend preshrunk 50/50 T-shirt
- Short set-in sleeve with double-stitched sleeve and hem
- 5.6 ounce
- Taped neck and shoulder
- Seamless collar with double-needle topstitched neck



• T-SHIRT COLORS ARE NOT CONSISTENT WITH HIGH 5 COLOR STANDARDS. DYE LOTS MAY VARY BETWEEN SHIPMENTS DUE TO MILL INCONSISTENCIES. VARIATIONS BETWEEN CERTAIN COLORS ARE VERY SLIGHT, PLEASE CALL CUSTOMER SERVICE FOR DETAILS.



PURPLE



SCARLET



ORANGE



ASH



JADE



HEATHER



BLACK



MAROON



KELLY



COLUMBIA BLUE



NAVY



ELECTRIC BLUE



WHITE



LIME



ROYAL



FOREST



GOLD

ESSORTEX SHORT-SLEEVE T-SHIRT

FIRST OFFER DATE: AT ONCE | END DATE: CARRY OVER

19220 Adult **MSRP**

AS, AM, AL, AXL **\$12.40**

A2XL **\$14.40** A3XL **\$16.40**

19221 Youth **MSRP**

YS, YM, YL **\$11.50**

- 100% polyester with Essortex moisture management performance
- Self-fabric crew neck
- Set-in sleeves
- Double-needle hem
- **UNDERSIZED**
- **ART SHOWN IS A FULL CHEST PIECE HEAT TRANSFER. PLEASE CALL US FOR DETAILS.**



COLUMBIA BLUE



ORANGE



ROYAL



KELLY



MAROON



FOREST



ATHLETIC GOLD



WHITE



BLACK



SCARLET



PURPLE



NAVY

FIRST OFFER DATE: 12/1/11 | END DATE: 11/1/14

ALBION SHORT

25380 Adult **MSRP**

AS, AM, AL, AXL **\$15.50**

A2XL **\$19.50**

25381 Youth **MSRP**

YXS, YS, YM, YL **\$14.50**

- 100% polyester with Essortex moisture management performance
- Contrast inset panels
- Double-needle hems
- Covered elastic waistband with inside drawcord
- **7" inseam** on Adult Large
- **6" inseam** on Youth Medium



ROYAL/WHITE



SCARLET/WHITE



NAVY/WHITE



KELLY/WHITE



BLACK/WHITE



WHITE/WHITE



BLACK/ORANGE



BLACK/LIME

ESSORTEX SHORT

75560 Adult **MSRP**

AS, AM, AL, AXL **\$15.70**

A2XL **\$19.70**

75561 Youth **MSRP**

YM, YL **\$13.70**

- 100% polyester with Essortex moisture management performance
- Fits like a **9" inseam** Adult Large
- **7 3/4" inseam** on Youth Medium
- Side seam pockets
- Covered elastic waistband with inside drawcord
- Double-needle bottom hem



FIRST OFFER DATE: AT ONCE | END DATE: CARRY OVER



COLUMBIA BLUE



ORANGE



NAVY



SCARLET



BLACK



ROYAL



KELLY



ATHLETIC GOLD



FOREST



MAROON



WHITE



PURPLE

CAMPOS SHORT

25360 Adult	MSRP
AS, AM, AL, AXL	\$16.70
A2XL	\$20.70
25361 Youth	MSRP
YS, YM, YL	\$15.10

- 100% polyester with Essortex moisture management performance
- Contrast insets on side panels with piping detail
- Double-needle hems
- Covered elastic waistband with inside drawcord
- **6" inseam** on Adult Large
- **5" inseam** on Youth Medium

FIRST OFFER DATE: AT ONCE
END DATE: CARRY OVER



HORIZON SHORT

25370 Adult	MSRP
AS, AM, AL, AXL	\$14.90
A2XL	\$18.90
25371 Youth	MSRP
YXS, YS, YM, YL	\$13.90

- 100% polyester with Essortex moisture management performance
- Contrast detail piping on side seam
- Double-needle hems
- Covered elastic waistband with inside drawcord
- **6" inseam** on Adult Large
- **5" inseam** on Youth Medium

FIRST OFFER DATE: AT ONCE
END DATE: CARRY OVER



See the corresponding Horizon Jersey on page 15 for all the available colors



ROYAL/WHITE SCARLET/WHITE BLACK/WHITE FOREST/WHITE NAVY/WHITE



ROYAL/WHITE SCARLET/WHITE BLACK/WHITE FOREST/WHITE NAVY/WHITE

ODYSSEY SHORT

25290 Adult	MSRP
AS, AM, AL, AXL	\$17.00
A2XL \$21.00	A3XL \$23.00
25291 Youth	MSRP
YS, YM, YL	\$15.40

- 100% soft-touch polyester with Essortex moisture management performance
- Contrasting side panels
- Inside drawcord
- **5 1/2" - 6" inseam** on Adult Large
- **5" inseam** on Youth Medium
- No liner

FIRST OFFER DATE: AT ONCE | END DATE: CARRY OVER



ROYAL/WHITE SCARLET/WHITE FOREST/WHITE



NAVY/WHITE KELLY/WHITE PURPLE/WHITE



BLACK/GOLD BLACK/WHITE BLACK/SILVER BLACK/LIME BLACK/ORANGE BLACK/COLUMBIA BLUE

METRO SHORT

FIRST OFFER DATE: AT ONCE
END DATE: CARRY OVER

25240 Adult	MSRP
AS, AM, AL, AXL	\$15.90
A2XL	\$19.90
25241 Youth	MSRP
YXS, YS, YM, YL	\$14.90

- 100% polyester high-sheen "dazzle" fabric
- No liner
- Inside drawcord
- **5 1/2" - 6" inseam** on Adult Large
- **5" inseam** on Youth Medium



ROYAL SCARLET WHITE BLACK FOREST NAVY

AERO SHORT

FIRST OFFER DATE: AT ONCE
END DATE: CARRY OVER

25300 Adult	MSRP
AS, AM, AL, AXL	\$14.80
A2XL	\$18.80
25301 Youth	MSRP
YXS, YS, YM, YL	\$14.00

- 100% soft-touch polyester with Essortex moisture management performance
- No liner
- Inside drawcord
- **5 1/2" - 6" inseam** on Adult Large
- **5" inseam** on Youth Medium



ROYAL SCARLET WHITE BLACK NAVY

CHECKERBOARD SHORT

FIRST OFFER DATE: AT ONCE
END DATE: CARRY OVER

25110 Adult	MSRP
AS, AM, AL, AXL	\$16.50
A2XL	\$20.50
25111 Youth	MSRP
YXS, YS, YM, YL	\$15.40

- 100% polyester satin
- Speed vents, external drawcord
- No liner
- **5" - 5 1/2" inseam** on Adult Large
- **4 1/2" inseam** on Youth Medium



ROYAL SCARLET WHITE BLACK NAVY

TAFFETA SHORT

FIRST OFFER DATE: AT ONCE
END DATE: CARRY OVER

25030 Adult	MSRP
AS, AM, AL, AXL	\$14.90
A2XL	\$18.90
25031 Youth	MSRP
YXS, YS, YM, YL	\$13.80

- 100% nylon taffeta
- Speed vents
- No liner
- External drawcord
- **5" - 5 1/2" inseam** on Adult Large
- **4 1/2" inseam** on Youth Medium



ROYAL SCARLET BLACK NAVY

BREAKER GK JERSEY

FIRST OFFER DATE: AT ONCE
END DATE: 11/1/13

24330 Adult MSRP

AS, AM, AL, AXL \$30.30

A2XL \$34.30

24331 Youth MSRP

YS, YM, YL \$27.70

- 100% Polyester with Essortex moisture management performance fabric
- Modified self-fabric V-neck
- Three-color SUBLIMATED front body with solid color raglan sleeves and back body
- Double-needle hems
- **SOME SLIGHT SHADING MAY OCCUR IN PRODUCTS WITH SUBLIMATED PANELS**
- **PADDED ELBOWS**



LIME/BLACK/WHITE



ATH GOLD/BLACK/WHITE

BLAST GK JERSEY

FIRST OFFER DATE: AT ONCE
END DATE: 11/1/12

24320 Adult MSRP

AS, AM, AL, AXL \$32.50

A2XL \$36.50

24321 Youth MSRP

YS, YM, YL \$30.50

- 100% soft-touch polyester with Essortex moisture management performance
- Rib knit V-neck trim
- Three-color SUBLIMATED body with solid color raglan sleeve
- **SOME SLIGHT SHADING MAY OCCUR IN PRODUCTS WITH SUBLIMATED PANELS**
- **PADDED ELBOWS**



GOLD/WHITE/BLACK



LIME/WHITE/BLACK



RASPBERRY/WHITE/BLACK



PACER GK JERSEY

FIRST OFFER DATE: AT ONCE
END DATE: CARRY OVER

24310 Adult	MSRP
AS, AM, AL, AXL	\$17.70
A2XL	\$21.70
24311 Youth	MSRP
YS, YM, YL	\$16.50

- 100% soft-touch polyester with Essortex moisture management performance
- Black raglan sleeves
- Self-fabric V-neck
- **NO ELBOW PADS**

- **AVAILABLE IN:**
LIME/BLACK (BOTTOM),
ORANGE/BLACK (TOP LEFT),
ELEC BLUE/BLK (TOP RIGHT)



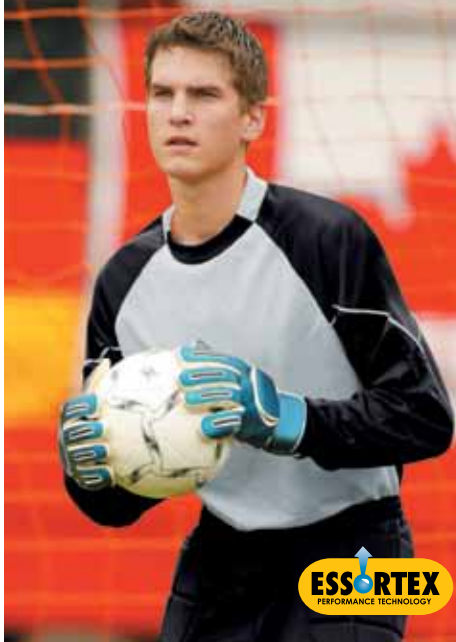
UNITED GK JERSEY

FIRST OFFER DATE: AT ONCE
END DATE: 11/1/12

24280 Adult	MSRP
AS, AM, AL, AXL	\$27.90
A2XL	\$31.90
24281 Youth	MSRP
YS, YM, YL	\$25.90

- 100% soft-touch polyester with Essortex moisture management performance
- Contrasting panels and piping
- Self-fabric crew neck
- **NO ELBOW PADS**

- **AVAILABLE IN:**
SILVER/BLACK (LEFT),
GOLD/BLACK (TOP RIGHT),
LIME/BLACK (CENTER RIGHT),
ROYAL/BLACK (BOTTOM RIGHT)



GK PANT

FIRST OFFER DATE: AT ONCE
END DATE: CARRY OVER

27020 Adult	MSRP
AS, AM, AL, AXL	\$36.50
A2XL	\$40.50
27021 Youth	MSRP
YL	\$34.50

- 100% stretch polyester
- Padded hips and knees
- Inside drawcord
- **31 1/2" inseam on Adult Large**
- **24 1/2" inseam on Youth Large**
- **AVAILABLE IN BLACK ONLY**

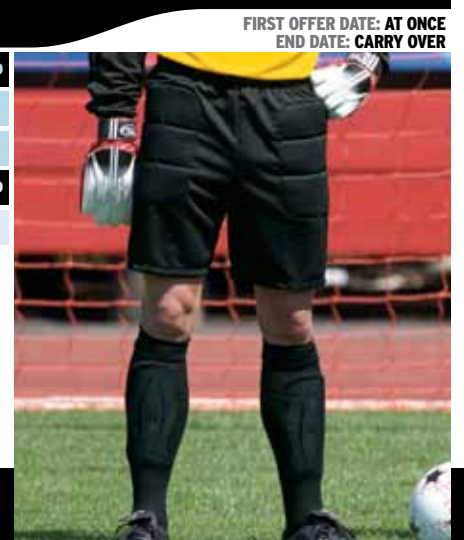


GK SHORT

FIRST OFFER DATE: AT ONCE
END DATE: CARRY OVER

27010 Adult	MSRP
AS, AM, AL, AXL	\$29.10
A2XL	\$33.10
27011 Youth	MSRP
YL	\$27.10

- 100% stretch polyester
- **8 1/2" inseam on Adult Large**
- Padded hips
- Inside drawcord
- **7 1/2" inseam on Adult Large**
- **5 1/2" inseam on Youth Large**
- **AVAILABLE IN BLACK ONLY**



DOMINION SS REFEREE JERSEY

FIRST OFFER DATE: AT ONCE | END DATE: CARRY OVER

23140 Adult MSRP

AS, AM, AL, AXL \$30.50

A2XL \$34.50

23141 Youth MSRP

YL \$28.50

- 100% polyester with Essortex moisture management performance
- Sublimated, engineered vertical stripes on body and sleeves
- Self-fabric V-neck and collar
- Left chest patch pocket with circular Velcro® hook and loop patch for official's badges
- Double-needle hems
- **Some slight shading may occur in products with sublimated panels**



SCARLET/BLACK



BLACK/WHITE



GOLD/BLACK

PARAGON SS REFEREE JERSEY

FIRST OFFER DATE: AT ONCE | END DATE: CARRY OVER

23150 Adult MSRP

AS, AM, AL, AXL \$33.00

A2XL \$37.00

- 100% polyester with Essortex moisture management performance
- Sublimated, engineered vertical stripes on body and sleeves
- Self-fabric collar with contrast back neck inset
- Two-button placket
- Two front chest pockets with flap closures
- Circular Velcro® hook and loop patch for official's badges
- Double-needle hems
- **Some slight shading may occur in products with sublimated panels**



SCARLET/BLACK



BLACK/WHITE



GOLD/BLACK

SUPREME REF SHORT

FIRST OFFER DATE: AT ONCE
END DATE: CARRY OVER

26040 Adult MSRP

AS, AM, AL, AXL \$31.00

A2XL \$35.00

26050 Women's MSRP

WS, WM, WL, WXL \$31.00

W2XL \$35.00

- 100% soft-touch polyester with Essortex moisture management performance
- Two side-seam pockets, two back pockets with flaps and Velcro® closure
- 2" elastic waistband
- Two snap closure with zipper
- Speed vents
- **5 1/2" inseam** on Adult Large
- **4" inseam** on Women's Medium



BLACK



REFEREE SOCCER SOCK

28030 MSRP

SMALL (18") \$5.30

MEDIUM (24") \$5.60

LARGE (30") \$5.90

FIRST OFFER DATE: AT ONCE
END DATE: CARRY OVER

- 80% acrylic/14% nylon/6% elastic
- Solid color tube sock



BLACK

AVALON REF SHORT

FIRST OFFER DATE: AT ONCE
END DATE: CARRY OVER

26030 Adult MSRP

AS, AM, AL, AXL \$21.50

A2XL \$25.50

26031 Youth MSRP

YL \$20.50

- 100% soft-touch polyester with Essortex moisture management performance
- Two side-seam pockets, one back pocket with Velcro® closure
- 2" elastic waistband with inserted finished drawcord
- Speed vents
- **5 1/2" inseam** on Adult Large
- **4 3/4" inseam** on Youth Large



BLACK



SENTINEL GK GLOVES

FIRST OFFER DATE: 12/1/11
END DATE: CARRY OVER

27610 MSRP

SIZES: 4, 5, 6, 7, 8, 9, 10, 11 **\$15.00**

- Full cut glove for youth level training and match play
- 3.0mm latex foam palm
- Printed and embossed backhand
- Velcro® closure



BLACK/WHITE

CENTURY GK GLOVES

FIRST OFFER DATE: AT ONCE
END DATE: WHILE SUPPLIES LAST

27600 MSRP

SIZES: 4, 5, 6, 7, 8, 9, 10, 11 **\$9.90**

- Full cut glove for youth level training and match play
- 3.0mm embossed latex foam palm
- Printed and embossed backhand
- Velcro® closure



PREMIUM SHINGUARD

FIRST OFFER DATE: AT ONCE
END DATE: CARRY OVER

27900 Adult MSRP

AS 8 1/2", AM 9 1/4", AL 10" **\$8.30**

27900 Youth MSRP

YS 5 3/4", YM 6 3/4", YL 7 3/4" **\$8.30**

- Full art print over non-woven material with EVA foam backing
- Three sewn in plastic stays with Velcro® closure on elastic calf strap
- High density foam anklelet with elastic strap



ROYAL/BLACK



SCARLET/BLACK

FUSION SOCCER BALL

FIRST OFFER DATE: AT ONCE
END DATE: WHILE SUPPLIES LAST

27810 MSRP

SIZES: 3, 4, 5 **\$11.00**

- All-purpose ball with glossy PVC cover
- Butyl bladder and three-ply polyester/cotton lining



WHITE/BLACK/SCARLET

WHITE/SCARLET/NAVY

GOLD/KELLY/BLACK

SCARLET/BLACK/WHITE

COLUMBIA BLUE/NAVY/WHITE

LIME/ROYAL/WHITE

ORANGE/GOLD/NAVY

PINK/BLACK/WHITE

DISC CONES

FIRST OFFER DATE: AT ONCE
END DATE: CARRY OVER

27320 MSRP

2" x 7" **\$1.00**

- Lightweight plastic field markers
- Great for practice and drills



ORANGE

SCRIMAGE VEST

FIRST OFFER DATE: AT ONCE | END DATE: CARRY OVER

21000 Adult MSRP

ONE SIZE **\$7.70**

21001 Youth MSRP

ONE SIZE **\$7.20**

- 100% polyester mini mesh pull-over vest
- Ideal garment in practice sessions



LIME



SCARLET



ATHLETIC GOLD



ROYAL

FIRST OFFER DATE: 7/1/11 | END DATE: 6/1/14

PERIMETER JACKET

71020 Adult MSRP

AS, AM, AL, AXL \$37.30

A2XL \$41.30 A3XL \$43.30

71021 Youth MSRP

YS, YM, YL \$35.30

PERIMETER PANT

71520 Adult MSRP

AS, AM, AL, AXL \$30.90

A2XL \$34.90 A3XL \$36.90

71521 Youth MSRP

YS, YM, YL \$28.90



- 100% polyester brushed tricot
- Contrasting sleeve/side panels and piping
- Full front zipper with stand-up collar
- Side panel on-seam pockets
- Double-needle hems
- **A3XL ONLY AVAILABLE IN NAVY/WHITE AND BLACK/WHITE**



- 100% polyester brushed tricot
- Contrast side seam piping
- Covered elastic waistband with inside drawcord
- Side seam pockets
- **31" inseam** on on Adult Large
- **22 1/2" inseam** on Youth Medium
- Double-needle hems
- **A3XL ONLY AVAILABLE IN NAVY/WHITE AND BLACK/WHITE**



NAVY/WHITE AVAILABLE IN A3XL

BLACK/WHITE AVAILABLE IN A3XL

FOREST/WHITE

MAROON/WHITE

ROYAL/WHITE

SCARLET/WHITE

BLACK/ATH GOLD

BLACK/SCARLET

BLACK/ORANGE

NAVY/WHITE AVAILABLE IN A3XL

BLACK/WHITE AVAILABLE IN A3XL

TORINO JACKET

FIRST OFFER DATE: AT ONCE | END DATE: CARRY OVER

71000 Adult **MSRP**

AS, AM, AL, AXL **\$39.90**

A2XL **\$43.90**

71010 Youth **MSRP**

YS, YM, YL **\$37.50**

- 100% polyester brushed tricot
- Contrasting shoulder and side panels
- Color insets in arm
- Full front zip with stand-up collar
- Side pockets and straight cuffs
- Double-needle hem

TORINO PANT

71500 Adult **MSRP**

AS, AM, AL, AXL **\$28.00**

A2XL **\$32.00**

71510 Youth **MSRP**

YS, YM, YL **\$26.00**

- 100% polyester brushed tricot
- Self-fabric side panel
- Two side pockets
- Inside drawcord
- Straight leg
- Elastic waistband
- **31" inseam** on Adult Large
- **22 1/2" inseam** on Youth Medium
- 12" leg zippers on Adult sizes and 9" on Youth sizes



NAVY BLACK



BLACK/WHITE FOREST/BLK/WHT NAVY/BLK/WHT ROYAL/BLK/WHT ATH GOLD/BLK/WHT COL BLUE/BLK/WHT MAROON/BLK/WHT ORANGE/BLK/WHT SCARLET/BLK/WHT

WOMEN'S ARIS JACKET

FIRST OFFER DATE: AT ONCE | END DATE: CARRY OVER

71001 Women's **MSRP**

WS, WM, WL, WXL **\$39.50**

W2XL **\$43.50**

71011 Girls' **MSRP**

GS, GM, GL **\$36.70**

- 100% polyester brushed tricot
- Slim fit for women
- White side and sleeve arm panels
- Full front zip with stand-up mandarin-style collar
- Side pockets
- Straight cuffs
- Double-needle hem
- Cropped length

WOMEN'S ARIS PANT

71501 Women's **MSRP**

WS, WM, WL, WXL **\$28.00**

W2XL **\$32.00**

71511 Girls' **MSRP**

GS, GM, GL **\$26.00**

- 100% polyester brushed tricot
- Slim fit for women
- White panel at zippers
- Two side pockets
- Inside drawcord
- Straight leg
- Elastic waistband
- **30" inseam** on Women's Medium
- **23" inseam** on Girls' Medium
- 12" leg zippers on Women's sizes
- 9" leg zippers on Girls' sizes



WHITE/SILVER AVAILABLE IN TOP ONLY

BLACK/WHITE

MAROON/WHITE

ROYAL/WHITE

PURPLE/WHITE

NAVY/WHITE

PINK/WHITE

COLUMBIA BLUE/WHITE

SCARLET/WHITE

ESSORTEX SHORT-SLEEVE T-SHIRT

FIRST OFFER DATE: AT ONCE | END DATE: CARRY OVER

19220 Adult **MSRP**

AS, AM, AL, AXL **\$12.40**

A2XL **\$14.40** A3XL **\$16.40**

19221 Youth **MSRP**

YS, YM, YL **\$11.50**

- 100% polyester with Essortex moisture management performance
- Designed to be worn under jersey
- Self-fabric crew neck
- Set-in sleeves
- Double-needle hem
- **UNDERSIZED**



COLUMBIA BLUE ORANGE NAVY SCARLET BLACK ROYAL



KELLY ATHLETIC GOLD FOREST MAROON WHITE PURPLE



ESSORTEX SLEEVELESS T-SHIRT

FIRST OFFER DATE: AT ONCE | END DATE: CARRY OVER

32160 Adult **MSRP**

AS, AM, AL, AXL **\$11.00**

A2XL **\$15.00** A3XL **\$17.00**

32170 Youth **MSRP**

YM, YL **\$10.20**

- 100% polyester with Essortex moisture management performance
- Designed to be worn under jersey
- Self-fabric crew neck
- Double-needle hem and armholes
- **UNDERSIZED**



COLUMBIA BLUE ORANGE NAVY SCARLET BLACK ROYAL



KELLY ATHLETIC GOLD FOREST MAROON WHITE PURPLE



ESSORTEX SHORT

FIRST OFFER DATE: 7/1/11 | END DATE: CARRY OVER

75560 Adult **MSRP**

AS, AM, AL, AXL **\$15.70**

A2XL **\$19.70**

75561 Youth **MSRP**

YM, YL **\$13.70**

- 100% polyester with Essortex moisture management performance
- Fits like a **9" inseam** Adult Large
- **7 3/4" inseam** on Youth Medium
- Side seam pockets
- Covered elastic waistband with inside drawcord
- Double-needle bottom hem



COLUMBIA BLUE ORANGE NAVY SCARLET BLACK ROYAL



KELLY ATHLETIC GOLD FOREST MAROON WHITE PURPLE



ESSORTEX LONG-SLEEVE MOCK

FIRST OFFER DATE: AT ONCE | END DATE: CARRY OVER

19230 Adult MSRP

AS, AM, AL, AXL \$20.60

A2XL \$22.60 A3XL \$24.60

19231 Youth MSRP

YS, YM, YL \$18.60

- 100% polyester with Essortex moisture management performance
- Designed to be worn under jersey
- Self-fabric mock turtleneck and cuff
- Set-in sleeves
- Double-needle hem
- **UNDERSIZED**



NAVY SCARLET BLACK ROYAL



ATHLETIC GOLD PURPLE FOREST WHITE MAROON

ULTRA T-SHIRT

FIRST OFFER DATE: AT ONCE | END DATE: CARRY OVER

22520 Adult MSRP

AS, AM, AL, AXL \$7.50

A2XL \$12.00

22521 Youth MSRP

YS, YM, YL \$7.10

*** T-SHIRT COLORS ARE NOT CONSISTENT WITH HIGH 5 COLOR STANDARDS. DYE LOTS MAY VARY BETWEEN SHIPMENTS DUE TO MILL INCONSISTENCIES. VARIATIONS BETWEEN CERTAIN COLORS ARE VERY SLIGHT, PLEASE CALL CUSTOMER SERVICE FOR DETAILS.**

- Gildan Ultra Blend preshrunk 50/50 T-shirt
- Short set-in sleeve with double-stitched sleeve and hem
- 5.6 ounce
- Taped neck and shoulder
- Seamless collar with double-needle topstitched neck



BLACK PURPLE HEATHER NAVY SCARLET COLUMBIA BLUE ROYAL KELLY



ORANGE WHITE ELECTRIC BLUE LIME MAROON GOLD JADE FOREST ASH

HEAVYWEIGHT SLEEVELESS V-NECK JERSEY

FIRST OFFER DATE: AT ONCE | END DATE: CARRY OVER

19170 Women's MSRP

WS, WM, WL, WXL \$12.70

W2XL \$14.70

19770 Girls' MSRP

GS, GM, GL \$11.70

- Women's **semi-fitted** 6-oz. 50% polyester/50% cotton sleeveless jersey knit tee
- Ribbed trim at V-neck and armhole
- Double-needle hem



FOREST HEATHER WHITE ROYAL BLACK SCARLET NAVY



ATHLETIC GOLD MAROON ASH PURPLE TEAL ORANGE KELLY

TRAINING BAG

FIRST OFFER DATE: AT ONCE | END DATE: CARRY OVER

27790 MSRP 22"L x 12"H x 12"W \$20.70

- Two zippered end compartments and one zippered side compartment
- Hand straps, adjustable shoulder straps, and corded zipper pulls
- Heavy duty 600D polyester with soft PVC backing



MAROON/BLACK/WHITE ORANGE/BLACK/WHITE BLACK/WHITE PURPLE/BLACK/WHITE



NAVY/BLACK/WHITE ROYAL/BLACK/WHITE SCARLET/BLACK/WHITE FOREST/BLACK/WHITE ATH GOLD/BLACK/WHITE

BACKPACK

FIRST OFFER DATE: AT ONCE | END DATE: CARRY OVER

27850 MSRP 18"L x 17"H x 9"W \$20.70

- Adjustable padded shoulder straps, hand strap and corded zipper pulls
- Heavy duty 600D polyester with soft PVC backing
- Two zippered side compartments with mesh panels
- Mesh paneled zippered interior ball compartment



MAROON/BLACK/WHITE ORANGE/BLACK/WHITE BLACK/WHITE PURPLE/BLACK/WHITE



NAVY/BLACK/WHITE ROYAL/BLACK/WHITE SCARLET/BLACK/WHITE FOREST/BLACK/WHITE ATH GOLD/BLACK/WHITE

STADIUM EQUIPMENT BAG

FIRST OFFER DATE: AT ONCE
END DATE: CARRY OVER

27720 MSRP 36"L x 13"H x 14"W \$27.70

- 600 denier polyester with PVC backing
- Zippered side pocket

- Hand straps
- Adjustable shoulder strap
- Corded zipper pulls



BLACK

DRAWSTRING BACKPACK

FIRST OFFER DATE: AT ONCE
END DATE: CARRY OVER

27760 MSRP 18"H x 14"W \$7.40

- 210 denier nylon with PU coating
- 2-color Logo screen printed on lower front

- Hemmed top with drawcord closure
- Black bottom with white accent piping
- Zippered front pocket
- Web tab at bottom corners for reinforcement



SCARLET/BLK/WHT ROYAL/BLK/WHT NAVY/BLK/WHT



PURPLE/BLK/WHT BLACK/WHITE GOLD/BLK/WHT COL BLUE/BLK/WHT

STIRRUP SOCK

FIRST OFFER DATE: AT ONCE | END DATE: CARRY OVER

19800 MSRP

SMALL (15")	\$5.00
MEDIUM (19")	\$5.20
LARGE (24")	\$5.50

- 43% polyester/35% cotton/16% acrylic/6% elastic
- White sock with knitted-in stirrup



WHITE/NAVY WHITE/SCARLET WHITE/BLACK WHITE/ROYAL WHITE/FOREST WHITE/ATH GOLD WHITE/ORANGE WHITE/KELLY WHITE/MAROON WHITE/TEAL WHITE/PURPLE

GAME SOCK

FIRST OFFER DATE: AT ONCE | END DATE: CARRY OVER

19810 MSRP

SMALL (15")	\$5.10
MEDIUM (19")	\$5.30
LARGE (24")	\$5.60

- 91% nylon/5% polyester/4% elastic
- Solid color tube sock



NAVY SCARLET BLACK ROYAL FOREST ATH GOLD MAROON TEAL PURPLE ORANGE KELLY WHITE SILVER GREY COL BLUE

ATHLETIC SOCK

FIRST OFFER DATE: AT ONCE | END DATE: CARRY OVER

28030 MSRP

SMALL (18")	\$5.30
MEDIUM (24")	\$5.60
LARGE (30")	\$5.90

- 80% acrylic/14% nylon/6% elastic
- Solid color tube sock



ROYAL SCARLET WHITE BLACK NAVY MAROON GOLD KELLY PURPLE TEAL SILVER ORANGE FOREST COL BLUE LIME RASPBERRY

SPORT SOCK

FIRST OFFER DATE: AT ONCE | END DATE: CARRY OVER

28060 MSRP

SMALL (18")	\$7.30
MEDIUM (24")	\$7.80
LARGE (30")	\$8.30

- 38% nylon/31% cotton/16% acrylic/7% polyester/5% elastic/3% spandex
- Full cushion foot
- Padded instep with ankle and arch support
- Fold down cuff



ROYAL SCARLET WHITE BLACK NAVY MAROON GOLD KELLY TEAL PURPLE SILVER GREY ORANGE FOREST COL BLUE LIME RASPBERRY

SOCK SIZE CHART

ADULT SOCK SIZING					WOMEN'S SOCK SIZING						
SHOE SIZES 6-7	SMALL	SHOE SIZES 8-10	MEDIUM	SHOE SIZES 10-13+	LARGE	SHOE SIZES 4-5	SMALL	SHOE SIZES 6-9	MEDIUM	SHOE SIZES 9-12+	LARGE
YOUTH SOCK SIZING					GIRLS' SOCK SIZING						
SHOE SIZES 1-4	SMALL	SHOE SIZES 4-7	MEDIUM	SHOE SIZES 1-4	SMALL	SHOE SIZES 4-7	MEDIUM				

THE 28030 ATHLETIC AND 28060 SPORT HAVE A LONGER LENGTH AND ROLLOVER CUFF INTENDED FOR SOCCER USE. WE RECOMMEND THAT YOUTH AND GIRLS' WEAR A SMALL/MEDIUM AND MOST ADULT MEN AND WOMEN A LARGE FOR A ROLLOVER CUFF LENGTH.

VALUE PRICING

STINGER JERSEY

22680 AS, AM, AL, AXL \$17.50 A2XL \$21.50
22681 YS, YM, YL \$16.70

- 100% polyester with Essortex moisture management performance
- Two-color SUBLIMATED body with solid color raglan sleeve
- Contrasting sleeves
- Contrast rib knit V-neck
- Double-needle hems
- **SOME SLIGHT SHADING MAY OCCUR IN PRODUCTS WITH SUBLIMATED PANELS**



FOREST/BLACK/WHITE
 WHITE/ROYAL/SILVER
 NAVY/BLACK/WHITE
 ROYAL/BLACK/WHITE
 SCARLET/NAVY/WHITE
 ATHLETIC GOLD/BLACK/WHITE
 CARDINAL/BLACK/WHITE
 KELLY/BLACK/WHITE
 SILVER/BLACK/WHITE
 WHITE/BLACK/SILVER
 COLUMBIA BLUE/NAVY/WHITE
 PURPLE/BLACK/WHITE
 ORANGE/NAVY/WHITE
 LIME/NAVY/WHITE
 WHITE/SCARLET/SILVER



SPEED JERSEY

22700 AS, AM, AL, AXL \$17.50 A2XL \$21.50
22701 YXS, YS, YM, YL \$15.50

- 100% polyester eyelet with Essortex moisture management performance
- V-neck
- Contrasting sleeves with inset panel design and piping
- Double-needle hems



PURPLE/WHITE
 COLUMBIA BLUE/BLACK
 WHITE/BLACK
 TEAL/BLACK
 FOREST/WHITE
 ROYAL/WHITE
 RASPBERRY/WHITE
 SILVER GREY/BLACK
 ATHLETIC GOLD/BLACK
 CARDINAL/WHITE
 KELLY/WHITE
 SCARLET/WHITE
 BLACK/WHITE
 ORANGE/WHITE
 LIME/BLACK
 NAVY/WHITE



SWERVE JERSEY

22720 AS, AM, AL, AXL \$16.00 A2XL \$20.00
22721 YXS, YS, YM, YL \$14.70

- 100% polyester Essortex moisture management performance fabric
- Sewn-in contrast panels with piping detail
- Contrast rib knit V-neck



MAROON/WHITE/BLACK
 ATHLETIC GOLD/WHITE/BLACK
 WHITE/WHITE/BLACK
 KELLY/WHITE/BLACK
 WHITE/ROYAL/BLACK
 ROYAL/WHITE/BLACK
 NAVY/WHITE/BLACK
 FOREST/WHITE/BLACK
 LIME/WHITE/NAVY
 BLACK/WHITE/WHITE
 WHITE/SCARLET/BLACK
 RASPBERRY/WHITE/BLACK
 PURPLE/WHITE/BLACK
 ORANGE/WHITE/NAVY
 SCARLET/WHITE/NAVY
 SILVER GREY/WHITE/BLACK
 COLUMBIA BLUE/WHITE/NAVY



STORM JERSEY

22460 AS, AM, AL, AXL \$14.00 A2XL \$18.00
22461 YS, YM, YL \$12.10

- 100% polyester high-shen jacquard
- Short raglan sleeves with contrasting piping
- Two-color V-neck trim



TEAL/BLACK
 ROYAL/WHITE
 FOREST/WHITE
 VEGAS GOLD/BLACK
 NAVY/WHITE
 SCARLET/WHITE
 SILVER/BLACK
 ORANGE/BLACK
 WHITE/WHITE
 CARDINAL/WHITE
 PURPLE/WHITE
 COLUMBIA BLUE/BLACK
 RASPBERRY/BLACK
 LIME/BLACK
 KELLY/WHITE
 GOLD/BLACK



TYPHOON JERSEY

22560 AS, AM, AL, AXL \$17.00 A2XL \$21.00
22561 YXS, YS, YM, YL \$15.30

- 100% soft-touch polyester with Essortex moisture management performance
- Solid color body with three-color SUBLIMATED raglan sleeve
- Self-fabric crossover V-neck
- **SOME SLIGHT SHADING MAY OCCUR IN PRODUCTS WITH SUBLIMATED PANELS**



ORANGE/ROYAL/WHITE
 SCARLET/ROYAL/WHITE
 PURPLE/WHITE/BLACK
 BLACK/WHITE/BLACK
 ROYAL/WHITE/BLACK
 VEGAS GOLD/NAVY/WHITE
 KELLY/WHITE/BLACK
 WHITE/ROYAL/BLACK
 SILVER/BLACK/WHITE
 CARDINAL/WHITE/BLACK
 WHITE/SCARLET/BLACK
 GOLD/FOREST/WHITE

RASPBERRY/BLACK/WHITE
 SLATE BLUE/LIME/WHITE
 GOLD/BLACK/WHITE
 TEAL/BLACK/WHITE
 COLUMBIA BLUE/NAVY/WHITE
 LIME/BLACK/WHITE
 WHITE/BLACK/WHITE
 SCARLET/WHITE/BLACK
 NAVY/WHITE/BLACK
 FOREST/WHITE/BLACK
 PINK/BLACK/WHITE



ALLIANCE JERSEY

22550 AS, AM, AL, AXL \$17.00 A2XL \$21.00
22551 YS, YM, YL \$16.20

- 100% soft-touch polyester with Essortex moisture management performance
- Contrasting sewn-in panel design
- Short set-in sleeves
- Rib knit crew neck



CARDINAL/WHITE
 LIME/BLACK
 FOREST/WHITE
 SLATE BLUE/WHITE
 GOLD/BLACK
 WHITE/ROYAL
 VEGAS GOLD/BLACK
 TEAL/BLACK
 SILVER/BLACK
 PURPLE/WHITE
 RASPBERRY/BLACK

ROYAL/WHITE
 BLACK/WHITE
 WHITE/BLACK
 WHITE/SCARLET
 SCARLET/WHITE
 NAVY/WHITE
 ORANGE/BLACK
 COLUMBIA BLUE/BLACK
 KELLY/WHITE
 WHITE/WHITE



OLYMPUS JERSEY

22530 AS, AM, AL, AXL \$15.00 A2XL \$17.00
 A3XL \$19.00
22531 YXS, YS, YM, YL \$12.90

- 100% soft-touch polyester with Essortex moisture management performance
- Contrasting sleeves, piping
- Self-fabric crossover V-neck
- Short raglan sleeves



SCARLET/WHITE
 KELLY/WHITE
 WHITE/ROYAL
 ROYAL/WHITE
 NAVY/WHITE
 PURPLE/WHITE

SLATE BLUE/WHITE
 VEGAS GOLD/BLACK
 WHITE/WHITE
 CARDINAL/WHITE
 SILVER/BLACK
 LIME/BLACK

WHITE/SCARLET
 COLUMBIA BLUE/BLACK
 GOLD/BLACK
 FOREST/WHITE
 BLACK/WHITE
 RASPBERRY/BLACK

TEAL/BLACK
 WHITE/BLACK
 ORANGE/BLACK

FOREST/WHITE
 PURPLE/WHITE
 ORANGE/BLACK
 WHITE/ROYAL
 KELLY/WHITE
 BLACK/WHITE

COLUMBIA BLUE/BLACK
 WHITE/SCARLET
 NAVY/WHITE
 LIME/BLACK
 WHITE/BLACK
 VEGAS GOLD/BLACK

SILVER/BLACK
 RASPBERRY/BLACK
 ROYAL/WHITE
 SCARLET/WHITE
 PINK/BLACK
 CARDINAL/WHITE

SLATE BLUE/WHITE
 GOLD/BLACK
 TEAL/BLACK



APOLLO JERSEY

22590 AS, AM, AL, AXL \$16.60 A2XL \$20.60
22591 YS, YM, YL \$15.00

- 100% polyester vertical eyelet jacquard with Essortex moisture management performance
- Short raglan sleeves
- Contrasting soft-touch polyester panels
- Crew neck with rib knit trim

REAL SOCCER BALL

27830 SIZES: 4, 5 \$27.90

- Approved for use in interscholastic competition
- NFHS logo printed on size 5 ball
- Excellent for youth match play
- Top quality PU cover with glossy finish
- Butyl bladder
- Four-ply polyester and poly/cotton lining

NFHS APPROVED



WHITE/SILVER/BLACK

UNITED SOCCER BALL

27820 SIZE 5 ONLY \$35.90

- Approved for use in interscholastic competition
- NFHS logo printed on ball
- Ideal for match play
- Top quality PU cover with glossy finish
- Butyl bladder
- Four-ply polyester and poly/cotton lining

NFHS APPROVED



WHITE/NAVY/GOLD

BALL PUMP

27310 ONE SIZE \$5.00

- Supplied with hose and needle, needle conveniently stores in cap
- Compact dual action hand pump



RED

ACTIVE POLO SHIRT

72000 AS, AM, AL, AXL \$19.90 A2XL \$23.90 A3XL \$25.90

- 100% polyester jacquard with Essortex moisture management performance
- Drop-tail design
- Color panels across back, underarm, and at sides
- Knit collar with two-button placket



WHITE/ROYAL
WHITE/BLACK
WHITE/FOREST
WHITE/SILVER
WHITE/NAVY
WHITE/ORANGE
WHITE/MAROON
WHITE/PURPLE
WHITE/SCARLET



BASIC POLO SHIRT

72001 AS, AM, AL, AXL \$18.90 A2XL \$22.90
A3XL \$24.90 A4XL \$26.90

- 100% polyester jacquard with Essortex moisture management performance
- Knit collar and sleeve insert features contrast stripe
- Two-button placket



NAVY/WHITE
SCARLET/WHITE
BLACK/WHITE
ROYAL/WHITE
WHITE/WHITE
COLUMBIA BLUE/WHITE
FOREST/WHITE
MAROON/WHITE
SILVER/WHITE



WOMEN'S BASIC POLO

72003 WXS, WS, WM, WL, WXL \$18.90 W2XL \$22.90

- 100% polyester jacquard with Essortex moisture management performance
- Contrast stripe in knit collar and sleeve insets
- Cross-over V-placket
- Double-needle hems



NAVY/WHITE
SCARLET/WHITE
BLACK/WHITE
ROYAL/WHITE
WHITE/WHITE
COLUMBIA BLUE/WHITE
FOREST/WHITE
MAROON/WHITE



FLEECE TRAINING PULLOVER

19870 AS, AM, AL, AXL \$34.50 A2XL \$38.50 A3XL \$40.50

19871 YM, YL \$33.50

- 100% lightweight polyester fleece
- Elasticized shoulder inset for added mobility and comfort
- Elasticized binding around V-neck, sleeve cuffs and waist
- Stylish drop-tail



NAVY
SCARLET
BLACK
ROYAL
FOREST
MAROON



TASLAN WINDSHIRT

19860 AS, AM, AL, AXL \$19.70
 A2XL \$23.70
 A3XL \$25.70

19861 YM, YL \$18.50

- 100% taslan nylon outer shell
- 100% polyester jersey liner
- White overlay on sleeves
- White striped trim on crossover V-neck, cuffs and waistband
- Two side-seam pockets
- Water resistant
- Machine washable



NAVY/WHITE
SCARLET/WHITE

BLACK/WHITE
ROYAL/WHITE

FOREST/WHITE
MAROON/WHITE

PURPLE/WHITE

WINDSHIRT

71007 AS, AM, AL, AXL \$15.90
 A2XL \$19.90

71008 YM, YL \$13.90

- 100% nylon taffeta outer shell lined with 100% polyester mesh and taffeta sleeves
- Contrast piping on side seams
- Side seam pockets
- Striped rib knit cross-over crew neck
- Striped rib knit cuffs
- Clean finished elastic hem
- Water resistant
- Machine washable



NAVY/WHITE
SCARLET/WHITE

BLACK/WHITE
ROYAL/WHITE

FOREST/WHITE

MAROON/WHITE

ASTON JACKET

71002 AS, AM, AL, AXL \$18.50
 A2XL \$22.50
 A3XL \$24.50

71012 YS, YM, YL \$16.50

- 100% micro polyester shell
- Sleeves lined in 100% polyester taffeta
- Full front zipper
- Body lined in 100% polyester mesh
- White piping on sleeves and sides
- Reinforced slash front pockets
- Elastic cuffs and waistband
- Water resistant
- Machine washable

ASTON PANT

71502 AS, AM, AL, AXL \$19.30
 A2XL \$23.30
 A3XL \$25.30

71512 YS, YM, YL \$17.50

- 100% micro polyester shell
- Upper leg lined in 100% polyester mesh, lower leg lined in 100% polyester taffeta
- Covered elastic waistband
- Inside drawcord
- Side seam pockets
- White piping at side seams
- 31" inseam on Adult Large
- 22 1/2" inseam on Youth Medium
- Leg opening zippers
- Single needle hem
- Water resistant
- Machine washable



MAROON/WHITE
NAVY/WHITE
ROYAL/WHITE
SCARLET/WHITE
CLOUMBIA BLUE/WHITE
ORANGE/WHITE
PURPLE/WHITE
BLACK/WHITE
FOREST/WHITE



SERENO JACKET

27140 AS, AM, AL, AXL \$22.90
 A2XL \$26.90

27141 YS, YM, YL \$22.00

- 100% polyester brushed tricot
- Contrasting shoulder panel and side-seam piping
- Full front zipper with stand-up collar
- Side pockets
- Rib knit cuffs and waistband

SERENO PANT

27150 AS, AM, AL, AXL \$18.70
 A2XL \$22.70

27151 YS, YM, YL \$18.30

- 100% polyester brushed tricot
- Piping sewn-in side seam
- Two side pockets and inside drawcord
- Elastic waistband and cuffs
- 32" inseam on Adult Large
- 23 1/2" inseam on Youth Medium
- 12" leg zippers on Adult sizes
- 9" leg zippers on Youth sizes



ROYAL/WHITE
SCARLET/WHITE
NAVY/WHITE
FOREST/WHITE
BLACK/WHITE
MAROON/WHITE



IMPULSE JERSEY

72502 AS, AM, AL, AXL \$21.50 A2XL \$25.50 A3XL \$27.50
72503 YM, YL \$20.10

- 100% soft-touch polyester with Essortex moisture management performance
- White front with contrasting sleeves, piping, and garment back
- Self-fabric V-neck
- Woven locker label on lower left front
- Double-needle sleeve and bottom hems



COLUMBIA BLUE/WHITE
 MAROON/WHITE
 PURPLE/WHITE
 FOREST/WHITE
 ROYAL/WHITE
 BLACK/WHITE
 SCARLET/WHITE
 NAVY/WHITE



MOMENTUM JERSEY

72500 AS, AM, AL, AXL \$26.90 A2XL \$30.90 A3XL \$32.90
72501 YS, YM, YL \$24.90

- 100% soft-touch polyester with Essortex moisture management performance
- Mesh panels on underside of sleeves and side body
- Piping on chest, lower back and across forearms
- Combination rib knit and self-fabric modified crew neck
- Double-needle hem and cuffs



NAVY/WHITE
 SCARLET/WHITE
 BLACK/WHITE
 ROYAL/WHITE
 ORANGE/WHITE
 WHITE/WHITE
 COLUMBIA BLUE/WHITE
 MAROON/WHITE
 ATHLETIC GOLD/WHITE
 FOREST/WHITE



JERSEY KNIT SLEEVELESS T-SHIRT

32180 AS, AM, AL, AXL \$5.80
 A2XL \$7.30 A3XL \$8.30
32190 YS, YM, YL \$4.90

- Heavyweight 6-oz. 50%polyester/50% cotton jersey knit
- Rib knit crew neck
- Double-needle hem and armholes



BLACK
 NAVY
 SCARLET
 ASH
 FOREST
 HEATHER
 WHITE
 MAROON
 PURPLE
 ROYAL
 ATHLETIC GOLD



JERSEY KNIT ATHLETIC SHORT

35610 AS, AM, AL, AXL \$5.30 A2XL \$9.30 A3XL \$11.30
35620 YS, YM, YL \$3.90

- Heavyweight 6-oz. 50% polyester/50% cotton jersey knit fabric
- 6" inseam on Adult Large
- 4 1/2" inseam on Youth Medium
- Elastic waistband



BLACK
 NAVY
 SCARLET
 ASH
 FOREST
 HEATHER
 WHITE
 MAROON
 PURPLE
 ROYAL
 ATHLETIC GOLD





ESSORTEX AND ESSORTEX PLUS



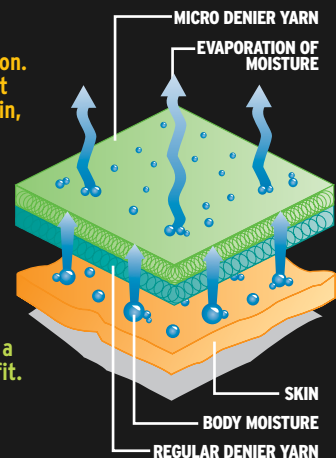
Play a cooler game with Essortex.

Essortex performance fabrics retain their superior qualities throughout the most active season. Our exclusive Essortex treatment wicks moisture away from the skin, achieving a dry, comfortable fit that you'll truly appreciate.



Essortex Plus' engineered fibers and performance knit wick moisture and heat away from the body for a cooler, dryer, more comfortable fit.

These fabrics permit body heat to dissipate more efficiently, allowing athletes to keep cool in the toughest competition.



SIZE CHART

ADULT | YOUTH

JERSEYS TRAINING OUTERWEAR TOPS		SHORTS PANTS TRAINING OUTERWEAR BOTTOMS	
RECOMMENDED SIZE	INDIVIDUAL CHEST SIZE	RECOMMENDED SIZE	INDIVIDUAL WAIST SIZE
YXS	21" - 23"	YXS	18" - 20"
YS	24" - 26"	YS	21" - 22"
YM	27" - 30"	YM	23" - 24"
YL	31" - 34"	YL	25" - 26"
-	-	YXL	27" - 28"
AS	34" - 36"	AS	29" - 30"
AM	37" - 40"	AM	31" - 34"
AL	41" - 44"	AL	35" - 38"
AXL	45" - 48"	AXL	39" - 42"
A2XL	49" - 52"	A2XL	43" - 46"
A3XL	53" - 56"	A3XL	44" - 57"

STYLES 32160 ESSORTEX SLEEVELESS T-SHIRT, 19230 ESSORTEX LONG-SLEEVE MOCK AND 19220 ESSORTEX SHORT-SLEEVE T-SHIRT OFFER A TRADITIONAL FIT. IF YOU PREFER A LOOSE FIT, CHOOSE ONE SIZE LARGER.

WOMEN'S | GIRLS'

JERSEYS TRAINING OUTERWEAR TOPS		SHORTS PANTS TRAINING OUTERWEAR BOTTOMS	
RECOMMENDED SIZE	INDIVIDUAL CHEST SIZE	RECOMMENDED SIZE	INDIVIDUAL WAIST SIZE
GS	23" - 25"	GS	20" - 22"
GM	26" - 29"	GM	23" - 24"
GL	30" - 33"	GL	24" - 25"
WXS	32" - 33"	WXS	22" - 24"
WS	34" - 35"	WS	25" - 27"
WM	36" - 37"	WM	28" - 30"
WL	38" - 40"	WL	31" - 33"
WXL	41" - 43"	WXL	34" - 36"
W2XL	44" - 47"	W2XL	37" - 39"

GL DIFFERS FROM WXS IN BUST SHAPING, AND FIT THROUGH HIPS AND WAIST
GL DIFFERS FROM WS IN RIS, INSEAM, AND FIT THROUGH HIPS

UNDERSIZED - GARMENTS SPECIFICALLY MARKED UNDERSIZED ARE INTENDED TO BE CLOSE FITTING, PERFECT AS THE FIRST LAYER OF YOUR UNIFORM. IF YOU PREFER A LOOSE FIT, WE RECOMMEND ORDERING UNDERSIZED GARMENTS ONE SIZE LARGER THAN YOUR CHEST IN THE ABOVE SIZE CHART.

PACE RACER-BACK JERSEY

FIRST OFFER DATE: 12/1/11
END DATE: 11/1/14

12112 Women's	MSRP
WS, WM, WL, WXL	\$20.00
W2XL	\$24.00
12113 Girls'	MSRP
GS, GM, GL	\$18.00

- 100% polyester with Essortex moisture management performance
- Contrast rib knit scoop neck
- Contrast side panels with piping detail

• Double-needle hems, droptail body



COLUMBIA BLUE/WHITE/BLACK



POWER JERSEY

FIRST OFFER DATE: AT ONCE
END DATE: 6/1/12

42070 Women's	MSRP
WS, WM, WL, WXL	\$27.50
W2XL	\$31.50
42071 Girls'	MSRP
GM, GL	\$25.50

- Women's jersey with raglan cap sleeves
- 100% polyester with Essortex moisture management performance

• Contrast self-fabric crossover V-neck

• Double-needle bottom hem



PURPLE/WHITE



WOMEN'S SKORT

75572 Women's	MSRP
WS, WM, WL, WXL	\$23.90
W2XL	\$27.90
75573 Girls'	MSRP
GM, GL	\$21.90

- 90% Polyester/10% Spandex with Essortex moisture management performance
- Low-rise
- Matching inner short
- V-notch vent at sides
- Covered elastic waistband
- Double-needle hems

FIRST OFFER DATE: 12/1/11 | END DATE: CARRY OVER



BLACK



NAVY



AXIOM JERSEY

FIRST OFFER DATE: AT ONCE | END DATE: CARRY OVER

42010 Women's MSRP

WXS, WS, WM, WL, WXL \$30.50

W2XL \$34.50

- Women's jersey with raglan cap sleeves
- Rib knit and self-fabric combination V-neck
- 100% polyester flatback mesh jacquard with Essortex moisture management performance
- Contrasting panels



WHITE/BLACK BLACK/WHITE



NAVY/WHITE FOREST/WHITE SCARLET/WHITE ATH GOLD/WHITE ROYAL/WHITE MAROON/WHITE PURPLE/WHITE
 WHITE/NAVY WHITE/FOREST WHITE/SCARLET WHITE/ATH GOLD WHITE/ROYAL WHITE/MAROON WHITE/PURPLE



WAVE JERSEY

FIRST OFFER DATE: AT ONCE | END DATE: CARRY OVER

12032 Women's MSRP

WS, WM, WL, WXL \$17.70

W2XL \$21.70

12033 Girls' MSRP

GS, GM, GL \$15.70

- Women's sleeveless jersey
- 100% polyester Essortex moisture management performance fabric
- Contrast piping and side panels
- Contrast rib knit neck



ROYAL/WHITE



MAROON/WHITE SCARLET/WHITE NAVY/WHITE TEAL/WHITE ORANGE/WHITE BLACK/WHITE
 ATHLETIC GOLD/WHITE COL BLUE/WHITE RASPBERRY/WHITE WHITE/WHITE FOREST/WHITE LIME/WHITE



FLEX JERSEY

FIRST OFFER DATE: AT ONCE | END DATE: CARRY OVER

12022 Women's MSRP

WS, WM, WL, WXL \$15.60

W2XL \$19.60

12023 Girls' MSRP

GS, GM, GL \$14.00

- Women's sleeveless jersey
- 100% polyester Essortex moisture management performance fabric
- Contrast piping detailing
- Contrast rib knit V-neck



MAROON/WHITE



ORANGE/WHITE SCARLET/WHITE NAVY/WHITE ROYAL/WHITE BLACK/WHITE TEAL/WHITE
 ATHLETIC GOLD/WHITE COL BLUE/WHITE RASPBERRY/WHITE WHITE/WHITE FOREST/WHITE LIME/WHITE



WOMEN'S HEAVYWEIGHT SLEEVELESS V-NECK JERSEY

FIRST OFFER DATE: AT ONCE | END DATE: CARRY OVER

19170 Women's MSRP

WS, WM, WL, WXL \$12.70

W2XL \$14.70

19770 Girls' MSRP

GS, GM, GL \$11.70

- Women's 6-oz. 50% polyester/50% cotton sleeveless jersey knit tee
- Ribbed trim at V-neck and armhole
- Double-needle hem



TEAL



FOREST HEATHER WHITE ROYAL BLACK SCARLET NAVY
 ATHLETIC GOLD MAROON ASH PURPLE ORANGE KELLY

WOMEN'S *LACROSSE AND FIELD HOCKEY*

AVAILABLE NOW



HIGH FIVE

HIGH 5 SPORTSWEAR, INC.

18200 SEGALE PARK DRIVE B • SEATTLE, WA 98188

TO ORDER CALL: (800) 222-4016 • (206) 574-0123 • FAX (206) 574-0276

IN CANADA CALL: (800) 667-3174 • WWW.HIGH5SPORTSWEAR.COM

HIGH FIVE® IS A REGISTERED TRADEMARK OF HIGH 5 SPORTSWEAR, INC., SEATTLE, WASHINGTON.

PRICES SUBJECT TO CHANGE WITHOUT NOTICE.