



# TEAMS START HERE™

## TRACK & FIELD | CROSS COUNTRY



# NEW PRODUCTS

LARGEST SELECTION OF YOUTH AND LADIES SPECIFIC STYLES AND SIZES



323|338 – PG. 5



329|337 – PG. 5



703|704 – PG. 10



1705|1706 – PG. 10



LOOK FOR THIS "NEW" ICON THROUGHOUT OUR CATALOG TO FIND THE LATEST ADDITIONS TO OUR COLLECTION.



1278|1279 – PG. 11



1288|1289 – PG. 11



1335|1336 – PG. 11



4810|4811 – PG. 14



4760 – PG. 14



1149 – PG. 15

**Dye Migration.** Augusta Sportswear® cannot be held responsible for ink migration on polyester styles that can be attributed to poor ink quality or processing at temperatures exceeding those recommended by the ink manufacturer. **Dyeing.** Because of the variability of the dyeing process, we cannot guarantee perfect continuity of shade across all styles or from one order to the next. Jackets and pants are cut and offered for sale as separates, not as sets. **Decorating.** All embellishment is for photography and catalog purposes only. All styles are sold blank with no decorations applied. Augusta Sportswear® does not offer decorating services. For inquiries concerning how to achieve the best decorating results, please contact your ink and/or thread supplier for consultation.

# FABRIC GUIDE

LARGEST SELECTION OF HIGH PERFORMANCE, INNOVATIVE AND BASIC FABRIC TYPES TO CHOOSE FROM



**POLY/SPANDEX BRUSHED BACK KNIT**

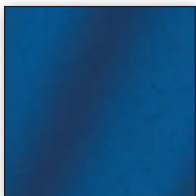
pg 14  
90% polyester/10% spandex knit with brushed inner layer for a soft feel. Moisture management wicks sweat while 4-way stretch allows for ease of motion



**PINHOLE MESH** pg 5  
92% polyester/8% spandex mesh with 4-way stretch for increased mobility and moisture management to wick sweat



**POLYESTER TRICOT** pg 8  
Sturdy yet soft, close knit fabric made from 100% polyester fibers



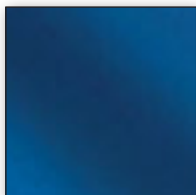
**POLYESTER WICKING KNIT** pg 7  
100% polyester with moisture management to wick sweat



**POLY/SPANDEX KNIT** pg 12  
90% polyester/10% spandex odor resistant blend features 4-way stretch for ease of movement and moisture management to wick sweat



**NYLON TRICOT** pg 8  
Sturdy yet soft, close knit easy stretch fabric made from 100% nylon fibers



**MICROPOLY** pg 13  
100% polyester woven fabric with moisture management to wick sweat

## HIGH PERFORMANCE FEATURES, BENEFITS & INNOVATION

LOOK FOR THESE ICONS NEXT TO THE STYLE NUMBER TO DENOTE FEATURES AND BENEFITS.



**MOISTURE MANAGEMENT**  
fabric wicks moisture away keeping the body cool and dry



**4-WAY STRETCH**  
stretch properties allow for increased mobility



**ODOR RESISTANT**



**FITTED**



**SEMI-FIT**



**DESIGNATES NEW 2014 PRODUCTS**

**NEW SIZES & COLORS**  
all new sizes and colors appear in **BOLD**

# THE KEYS TO THE GAME

PLAN YOUR SALES STRATEGY WITH THESE GREAT MARKETING TOOLS

### UNIFORM BUILDER

Online tool to dress out any team

#### CHOOSE YOUR COLOR



#### CHOOSE YOUR MASCOT OR UPLOAD YOUR OWN LOGO



### CREATE A FLYER

Online tool to create sales flyers in minutes





- 2 NEW PRODUCTS
- 5 TRACK & FIELD/ CROSS COUNTRY
- 14 OUTERWEAR/WARMUPS
- 15 BAGS

# EVERY THROW THAT GOES THE DISTANCE

## FIT GUIDE





NEW

323



RACERBACK



338

PINHOLE MESH FABRIC

3-INCH (YOUTH INSEAM GRADED)



NEW

329

4-INCH

337

NEW COLORS

323 324



**ALIZE JERSEY**

92% polyester/8% spandex wicking pinhole mesh • Heat sealed label • Self-fabric binding at neck and armholes • Modified racerback • White front panel • Double-needle hemmed bottom.

**323** ADULT: S-3XL LIST PRICE 17.00 (UPCHARGE FOR 2XL-3XL)  
**324** YOUTH: S-L LIST PRICE 15.00



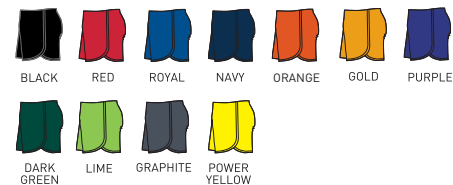
338 339



**SOLID SPLIT SHORT**

92% polyester/8% spandex wicking pinhole mesh • Heat sealed label • Covered elastic waistband • Matching inner brief with leg elastic • Crossover split side vents • 3-inch inseam • Youth inseam graded • Self-fabric binding on hem.

**338** ADULT: S-3XL LIST PRICE 18.50 (UPCHARGE FOR 2XL-3XL)  
**339** YOUTH: S-L LIST PRICE 16.50



329



**LADIES ALIZE JERSEY**

92% polyester/8% spandex wicking pinhole mesh • Ladies' fit • Heat sealed label • Self-fabric binding at neck and armholes • White front panel • Double-needle hemmed bottom.

**329** LADIES: S-2XL LIST PRICE 17.00 (UPCHARGE FOR 2XL)  
 For Youth sizes, see style 324.



337



**LADIES SPRINT SHORT**

92% polyester/8% spandex wicking pinhole mesh • Ladies' fit • Heat sealed label • Covered elastic waistband with inside drawcord • Matching inner brief with leg elastic • Contrast color side inserts • Crossover tulip shaped vent • 4-inch inseam.

**337** LADIES: XS-2XL LIST PRICE 19.00 (UPCHARGE FOR 2XL)





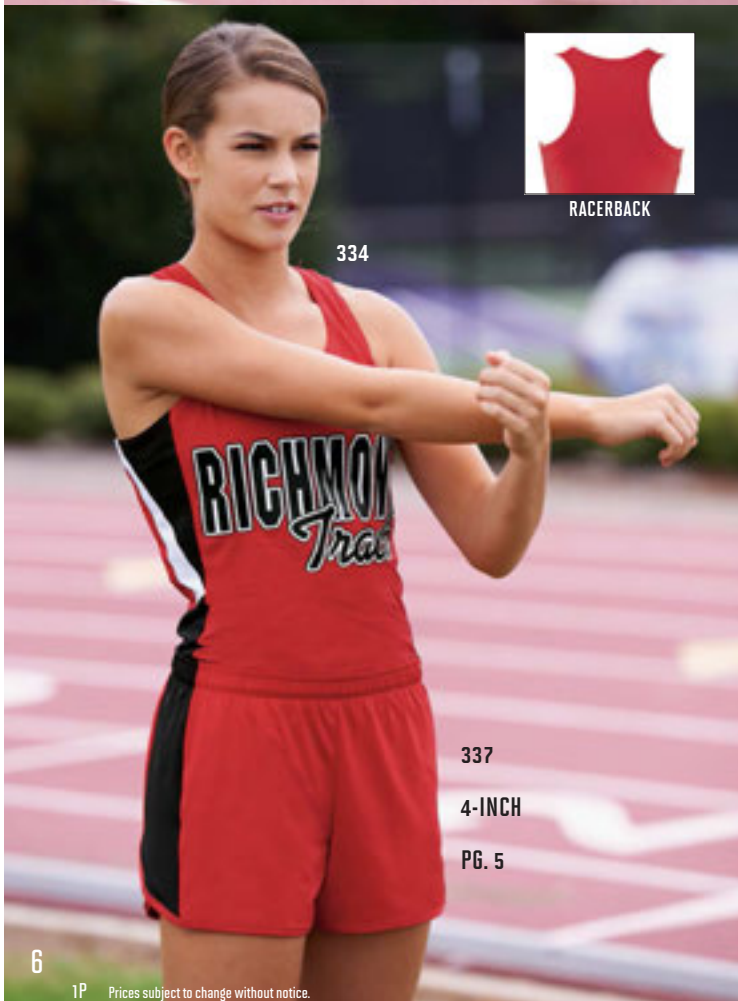
RACERBACK

332

NEW COLOR

335

5-INCH  
(YOUTH  
INSEAM  
GRADED)



RACERBACK

334

337

4-INCH

PG. 5

332

333



**SPRINT JERSEY**

92% polyester/8% spandex wicking pinhole mesh • Heat sealed label  
• Self-fabric binding at neck and armholes • Modified racerback • Contrast side panel with two-color triangular inserts.

332 ADULT: S-3XL LIST PRICE 17.40 (UPCHARGE FOR 2XL-3XL)

333 YOUTH: S-L LIST PRICE 15.30



335

336



**SPRINT SHORT**

92% polyester/8% spandex wicking pinhole mesh • Heat sealed label  
• Covered elastic waistband • Matching inner brief with leg elastic • Contrast color side inserts • Side vents • 5-inch inseam • Youth inseam graded.

335 ADULT: S-3XL LIST PRICE 19.00 (UPCHARGE FOR 2XL-3XL)

336 YOUTH: S-L LIST PRICE 17.00



**PINHOLE MESH PERFORMANCE FABRIC**



Pinhole mesh fabric provides unparalleled functionality with key high performance features and benefits.

**BENEFITS:**

- Extremely soft feel
- Full coverage breathability
- Lightweight
- 4-way stretch

334



**LADIES SPRINT JERSEY**

92% polyester/8% spandex wicking pinhole mesh • Ladies' fit • Heat sealed label • Self-fabric binding at neck and armholes • Modified racerback • Contrast side panel with two-color triangular inserts.

334 LADIES: S-2XL LIST PRICE 17.40 (UPCHARGE FOR 2XL)

For Youth sizes, see style 333.





**345**  
5-INCH  
(YOUTH  
INSEAM  
GRADED)

**340** **341** 

**VELOCITY TRACK JERSEY**

100% polyester wicking knit • Heat sealed label • Self-fabric binding at neck and armholes • Contrast color front insert.

**340** ADULT: S-3XL LIST PRICE 13.60 (UPCHARGE FOR 2XL-3XL)  
**341** YOUTH: S-L LIST PRICE 12.60



**345** **346** 

**VELOCITY TRACK SHORT**

100% polyester wicking knit • Heat sealed label • Covered elastic waistband • Matching inner brief with leg elastic • Contrast color side inserts • Side vents • 5-inch inseam • Self-fabric binding on hem • Youth inseam graded.

**345** ADULT: S-3XL LIST PRICE 15.60 (UPCHARGE FOR 2XL-3XL)  
**346** YOUTH: S-L LIST PRICE 13.60



**347**  
4-INCH

**342** 

**LADIES VELOCITY TRACK JERSEY**

100% polyester wicking knit • Ladies' fit • Heat sealed label • Self-fabric binding at neck and armholes • Contrast color front insert.

**342** LADIES: XS-2XL LIST PRICE 14.00 (UPCHARGE FOR 2XL)  
For Youth sizes, see style 341.



**347** 

**LADIES VELOCITY TRACK SHORT**

100% polyester wicking knit • Ladies' fit • Heat sealed label • Covered elastic waistband with inside drawcord • Matching inner brief with leg elastic • Contrast color side inserts • Side vents • 4-inch inseam • Self-fabric binding on hem.

**347** LADIES: XS-2XL LIST PRICE 15.60 (UPCHARGE FOR 2XL)  
For Youth sizes, see style 346.

**327**  
5-INCH  
(YOUTH  
INSEAM  
GRADED)



**327**  
5-INCH  
(YOUTH  
INSEAM  
GRADED)



**311** **312**



**WICKING TANK WITH SHOULDER INSERT**

Colors are 100% nylon tricot with wicking finish • White is 100% polyester tricot with wicking finish • Heat sealed label • Self-fabric binding at neck and armholes • Contrast color shoulder inserts • **Youth has two-ply front panel hemmed separately for embellishment.**

**311** ADULT: S-3XL LIST PRICE 13.90 (UPCHARGE FOR 2XL-3XL)  
**312** YOUTH: S-L LIST PRICE 13.00



**327** **328**



**WICKING TRACK SHORT WITH SIDE INSERT**

Colors are 100% nylon tricot with wicking finish • White is 100% polyester tricot with wicking finish • Covered elastic waistband • Matching inner brief with leg elastic • Contrast color side inserts • Side vents • 5-inch inseam • Self-fabric binding on hem • Youth inseam graded.

**327** ADULT: S-3XL LIST PRICE 15.50 (UPCHARGE FOR 2XL-3XL)  
**328** YOUTH: S-L LIST PRICE 14.20

**313**



**LADIES WICKING TANK WITH SHOULDER INSERT**

Colors are 100% nylon tricot with wicking finish • White is 100% polyester tricot with wicking finish • Ladies' fit • Heat sealed label • Self-fabric binding at neck and armholes • Contrast color shoulder inserts • **Two-ply front panel hemmed separately for embellishment.**

**313** LADIES: XS-2XL LIST PRICE 15.20 (UPCHARGE FOR 2XL)  
**For Youth sizes, see style 312.**







301

306  
LADIES  
FIT



**WICKING TANK**

Colors are 100% nylon tricot with wicking finish • White is 100% polyester tricot with wicking finish • Ladies' fit on style 306 • Heat sealed label • Self-fabric binding at neck and armholes • **Ladies' and Youth have two-ply front panel hemmed separately for embellishment.**

- 301 ADULT: S-3XL LIST PRICE 11.50 (UPCHARGE FOR 2XL-3XL)
- 306 LADIES: S-2XL LIST PRICE 13.40 (UPCHARGE FOR 2XL)
- 308 YOUTH: S-L LIST PRICE 12.30



5-INCH  
(YOUTH  
INSEAM  
GRADED)



2 1/2-INCH



**LONGER LENGTH WICKING TRACK SHORT**

100% nylon tricot with wicking finish • Covered elastic waistband • Matching inner brief with leg elastic • Side vents • 5-inch inseam • Self-fabric binding on hem • Youth inseam graded.

- 325 ADULT: S-3XL LIST PRICE 14.50 (UPCHARGE FOR 2XL-3XL)
- 326 YOUTH: S-L LIST PRICE 12.60



**WICKING TRACK SHORT**

100% nylon tricot with wicking finish • Covered elastic waistband • Matching inner brief with leg elastic • Side vents • 2 1/2-inch inseam • Self-fabric binding on hem.

- 322 ADULT: XS-3XL LIST PRICE 13.20 (UPCHARGE FOR 2XL-3XL)



VALUE PRICE



703

345

4-INCH

PG. 7

703

704

CALL FOR PRICING



### TRAINING TANK

100% polyester wicking knit • Heat sealed label • Self-fabric binding at neck and armholes.

703 ADULT: S-3XL

704 YOUTH: S-L



# MADE TO MATCH

## OUR TRAINING TANKS ARE DESIGNED FOR MEN, YOUTH, LADIES & GIRLS, SO YOUR WHOLE TEAM CAN HAVE A COORDINATED LOOK THAT FITS GREAT!

VALUE PRICE



1705

347

4-INCH

PG. 7

1705

1706

CALL FOR PRICING



### LADIES TRAINING TANK

100% polyester wicking knit • Ladies' fit • Heat sealed label • Self-fabric binding at neck and armholes.

1705 LADIES: XS-2XL

1706 GIRLS: S-L





**NEW**

1278



BACK

PINHOLE MESH INSERT



1335

4-INCH



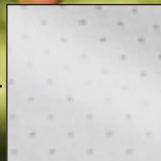
**NEW**

1288



BACK

PINHOLE MESH INSERT



337

4-INCH

PG. 5

1278 1279



**NEW**

**LADIES ACTION JERSEY**

Lightweight 90% polyester/10% spandex knit • 90% polyester/8% spandex wicking pinhole mesh binding and inserts • Ladies' fit • Heat sealed label • Contrast color pinhole mesh binding on neck armhole and keyhole back • Contrast color pinhole mesh curved side insert for breathability • Racerback styling with keyhole.

1278 LADIES: S-2XL

LIST PRICE 19.90 (UPCHARGE FOR 2XL)

1279 GIRLS: S-L

LIST PRICE 17.90



1335 1336



**NEW**

**LADIES STRIDE SHORT**

90% polyester/10% spandex knit • Odor resistant • Wicks moisture • Ladies' fit • Heat sealed label • Low rise • Wide flat waistband for secure fit and comfort • No front seam • U-shaped gusset • Flat lock stitching • Contrast color side inserts • 4-inch inseam.

1335 LADIES: S-2XL

LIST PRICE 17.00 (UPCHARGE FOR 2XL)

1336 GIRLS: S-L

LIST PRICE 15.00



1288 1289



**NEW**

**LADIES MOTIVATOR JERSEY**

Lightweight 90% polyester/10% spandex knit • 90% polyester/8% spandex wicking pinhole mesh back yoke • Ladies' fit • Heat sealed label • Contrast color pinhole mesh piping on neck and bottom of curved back yoke • Contrast color curved side insert • Set-on arm band.

1288 LADIES: S-2XL

LIST PRICE 21.90 (UPCHARGE FOR 2XL)

1289 GIRLS: S-L

LIST PRICE 19.90



1282

1283



**LADIES INSPIRATION JERSEY**

90% polyester/10% spandex knit • 92% polyester/8% spandex wicking pinhole mesh inserts • Odor resistant • Wicks moisture • Ladies' fit • Heat sealed label • Contrast color side and back pinhole mesh insert for breathability • Racerback styling.

**1282 LADIES: S-2XL LIST PRICE 19.90 (UPCHARGE FOR 2XL)**

**1283 GIRLS: S-L LIST PRICE 17.90**



1280

1281

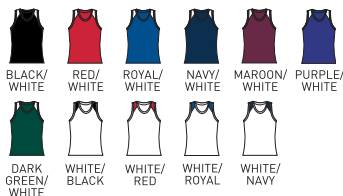


**LADIES INFINITY JERSEY**

90% polyester/10% spandex knit • 93% polyester/7% spandex mesh inserts • Odor resistant • Wicks moisture • Ladies' fit • Heat sealed label • Self-fabric binding at neck and armholes • White poly/spandex mesh shoulder inserts for breathability • Racerback styling.

**1280 LADIES: S-2XL LIST PRICE 19.90 (UPCHARGE FOR 2XL)**

**1281 GIRLS: S-L LIST PRICE 17.90**



1210

1211



**LADIES POLY/SPANDEX 2.5" SHORT**

90% polyester/10% spandex knit • Odor resistant • Wicks moisture • Ladies' fit • Heat sealed label • Low rise • Covered elastic waistband • No side seams • 2 1/2-inch inseam.

**1210 LADIES: S-2XL LIST PRICE 15.90 (UPCHARGE FOR 2XL)**

**1211 GIRLS: XS-L LIST PRICE 14.50**



4-INCH  
(GIRLS  
INSEAM  
GRADED)



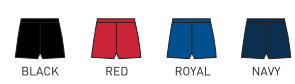
742 743



**LADIES POLY/SPANDEX 4" SHORT**

90% polyester/10% spandex knit • Odor resistant • Wicks moisture • Ladies' fit  
• Heat sealed label • Flatlock seamed construction for extra comfort • Low rise  
• Covered elastic waistband • No side seams • Two-ply gusset  
• 4-inch inseam • Girls inseam graded.

742 LADIES: S-2XL LIST PRICE 15.80 (UPCHARGE FOR 2XL)  
743 GIRLS: S-L LIST PRICE 14.00



# THE SHORTS STORY

LOOK GOOD, PLAY GREAT WITH HIGH-TECH FEATURES & FASHION DETAILS

**BENEFITS:**

- Built-in brief
- Inside key pocket
- Low rise

4-INCH  
(GIRLS  
INSEAM  
GRADED)



4-INCH  
(GIRLS  
INSEAM  
GRADED)



1267 1268



**LADIES JUNIOR FIT ADRENALINE SHORT**

Shell is 100% polyester micropoly • Inserts are 100% polyester mesh • Lining is 100% polyester wicking crepe • Liner wicks moisture • Junior fit • Low rise • Covered elastic waistband with inside drawcord • Inner brief with leg elastic • Inside key pocket  
• Contrast color lower front mesh insert • Contrast self-fabric binding on side seams and hem • 4-inch inseam • Girls inseam graded.

1267 LADIES JUNIOR FIT: S-2XL LIST PRICE 17.90 (UPCHARGE FOR 2XL)  
1268 GIRLS: S-L LIST PRICE 17.00



1265 1266



**LADIES JUNIOR FIT PULSE TEAM SHORT**

Shell is 100% polyester micropoly • Inserts are 100% polyester mesh • Lining is 100% polyester wicking crepe • Liner wicks moisture • Junior fit • Low rise • Covered elastic waistband with inside drawcord • Inner brief with leg elastic • Inside key pocket  
• Mesh insert side panel • 4-inch inseam • Contrast self-fabric binding on side panels and hem • Girls inseam graded.

1265 LADIES JUNIOR FIT: S-2XL LIST PRICE 17.90 (UPCHARGE FOR 2XL)  
1266 GIRLS: S-L LIST PRICE 17.00





4760

NEW FABRIC



### ZEAL PULLOVER

Brushed back 90% polyester/10% spandex knit • Soft brushed back poly/spandex knit offers 4-way stretch • Wicks moisture • Heat sealed label • Contrast color half-zip pullover style • Raglan sleeves • Contrast color inserts on sleeves and front • Open bottom.

4760 ADULT: S-3XL LIST PRICE 45.90 (UPCHARGE FOR 2XL-3XL)



BACK



4810

4811

NEW FABRIC

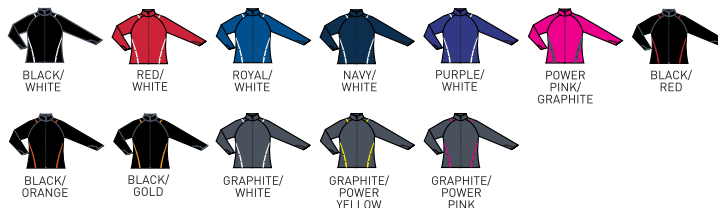


### LADIES FREEDOM JACKET

Brushed back 90% polyester/10% spandex knit • Soft brushed back poly/spandex knit offers 4-way stretch • Wicks moisture • Ladies' fit • Heat sealed label • Front zipper and zipper garage • Raglan sleeves with thumbholes for warmth • Contrast color inserts on back of collar, shoulder and front • Front seam pockets • Open bottom.

4810 LADIES: S-2XL LIST PRICE 45.90 (UPCHARGE FOR 2XL)

4811 GIRLS: S-L LIST PRICE 43.90



THUMBHOLE

NEW COLOR



728 AVAILABLE IN TALL\*

728

729



### LADIES POLY/SPANDEX PANT

90% polyester/10% spandex knit • Wicks moisture • Ladies' fit • Heat sealed label • Low rise • Double-needle coverstitched waistband with covered elastic.

728 LADIES: S-2XL LIST PRICE 33.90 (UPCHARGE FOR 2XL & TALL SIZES)

TALL LADIES: MT-2XLT

729 GIRLS: S-L LIST PRICE 31.90

\*Available in Tall



1149

CALL FOR PRICING



### TRES DRAWSTRING BACKPACK

70-denier nylon with PVC coating, 600-denier polyester with PVC coating  
• Hemmed top with drawcord closure • Front mesh pocket • Zippered front pocket for easy embellishment.

1149 18"W X 14"H



167

REVERSIBLE FROM DRAWSTRING BACKPACK TO A TOTE BAG

CALL FOR PRICING

### REVERB BACKPACK

210-denier nylon with PU coating • Fully reversible from drawstring bag to tote bag  
• Hemmed top with drawcord closure • Zippered front pocket allows for embellishment  
• Bottom corner grommets for reinforcement • Web handles.

167 14"W X 18"H



1740

1745

CALL FOR PRICING

### FLARE DUFFEL

Shiny hexagon patterned polyester with PVC coating and 600-denier polyester with PVC coating  
• Zippered main compartment has large U-shaped opening with two zipper pulls  
• Zippered front pocket removes for easy embellishment  
• Inside zippered pocket  
• Side mesh pocket  
• Shoe pocket  
• Web handles with self-fabric handle wrapper  
• Adjustable and detachable shoulder strap  
• Writable inside handle wrapper.

1740 MEDIUM: 21"W X 9 1/2"H X 10"D

1745 LARGE: 28"W X 12"H X 13"D



1745



WRITABLE HANDLE WRAPPER



FABRIC ZOOM



REMOVABLE POCKET

1740

1825

CALL FOR PRICING

### SPIRIT BAG

600-denier polyester with PVC coating • Zippered main compartment has large U-shaped opening with two zipper pulls  
• Side pockets  
• Matching web handles with self-fabric handle wrapper, reinforced at stress points  
• Adjustable and detachable matching shoulder strap with black rubber shoulder guard  
• Plastic hardware  
• Self-fabric piping  
• Removable inside bottom board.

1825 18"W X 10"H X 9"D



TO SEE OUR FULL OFFERING OF BAGS VISIT US ONLINE AT [AUGUSTASPORTSWEAR.COM](http://AUGUSTASPORTSWEAR.COM)



AUGUSTASPORTSWEAR.COM

